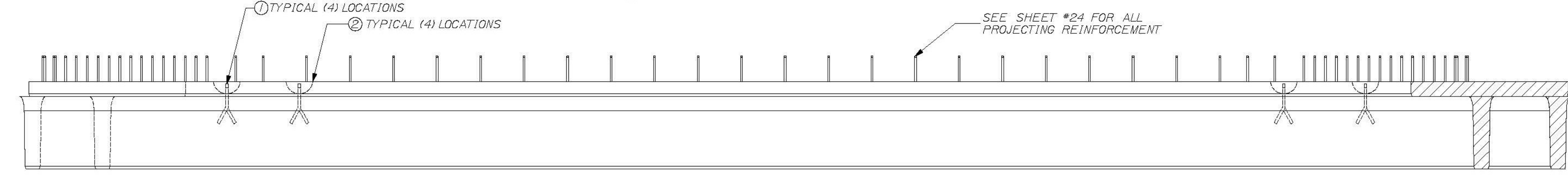
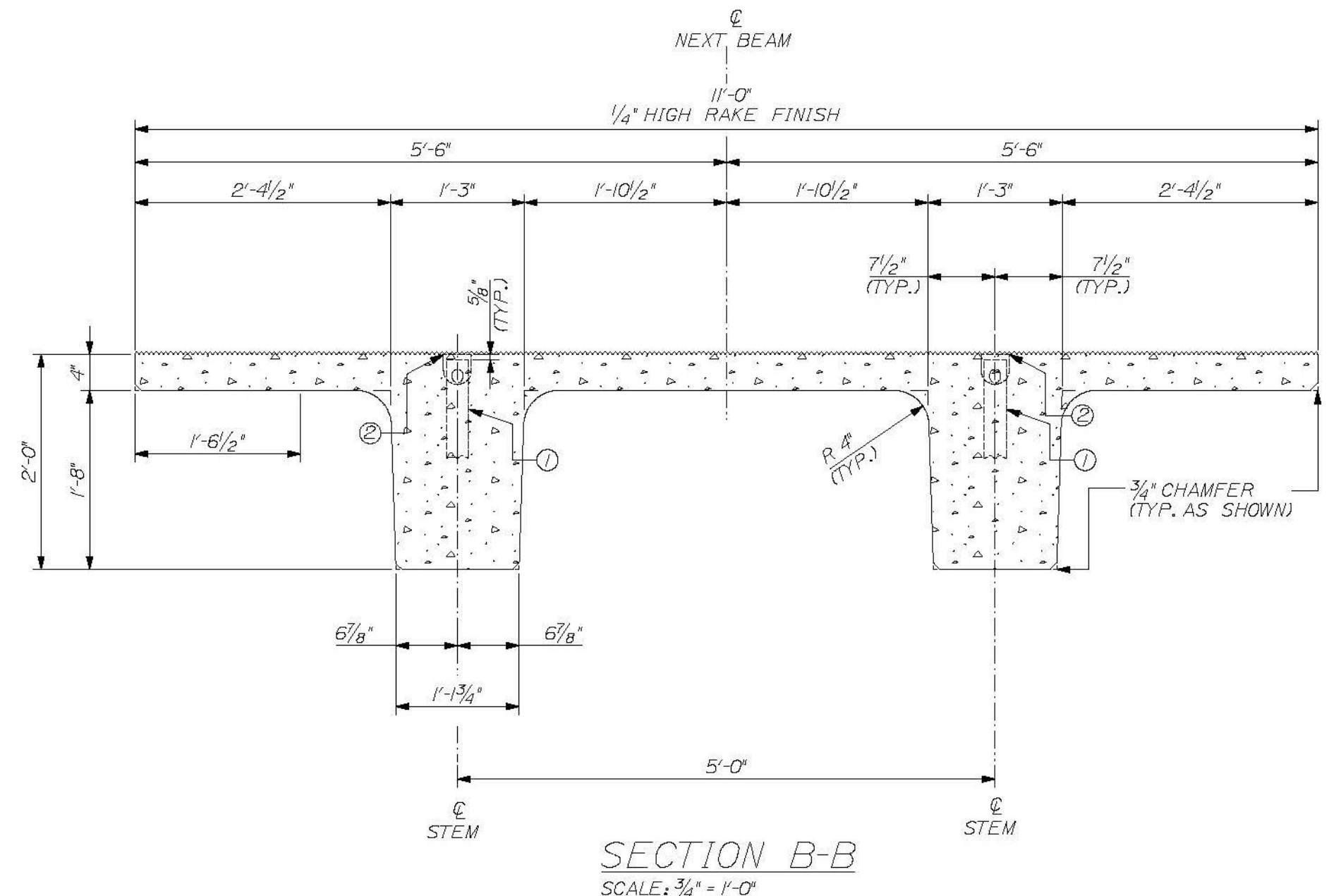


PLAN VIEW ~ BEAM "C3-SB"
SCALE: 1/2" = 1'-0"



VIEW A ~ TYPICAL BOTH SIDES
SCALE: 1/2" = 1'-0"



SECTION B-B
SCALE: 3/4" = 1'-0"

T-Y-LIN INTERNATIONAL

No Description taken
 Make Correction as Noted
 Submit Specified Item
 Resubmit Resubmit as Noted
 Rejected

Checking is for general compliance with the design concept of the project and general compliance with the information given in the contract documents only. Any action shown is not an approval and is subject to the requirements of the plans and specifications. Any action shown on a specific item shall not include the checking of an assembly or which the item is a component. Contractor is solely responsible for discussions which shall be conducted and executed at the job site. Fabrication processes, techniques of construction, safety precautions, and coordination of its work with that of all other trades and the satisfactory performance of its work.

Approved by: *[Signature]* Date: June 11, 2012

DESIGN NOTES:

CONCRETE f'_c @ TRANSFER = 6000 PSI
 f'_c @ FINAL = 8000 PSI
 CAMBER @ DESTRESS = 1/2 in.
 CAMBER @ ERECTION = 1/2 in.
 FINISH - TOPS OF BEAMS TO RECEIVE RAKE FINISH W/ 1/4" AMPLITUDE PATCH RECESS VOIDS FLUSH WITH SURFACE WITH CEMENT MORTAR ALL TOLERANCES TO PCI STANDARDS

(1) "C3-SB" DECK BEAMS REQUIRED
 SEE SHEET #24 FOR REINFORCING

DUE TO INHERENT VARIABLES, CAMBERS ARE PROVIDED ONLY AS A MEANS OF QUANTIFYING THE CONSISTENCY OF PRODUCTION AND QUALITY CONTROL AND SHOULD NEVER BE CONSIDERED ANY BETTER THAN ESTIMATES.

PRODUCT WEIGHT

PRODUCT	WEIGHT
"C3-SB"	18.9 TONS

BILL OF MATERIALS

REMARKS	#	QTY	TOTAL	DESCRIPTION
SEE SHEET #2	1	4	4	RL-23 SPREAD ANCHOR, 8 TON, (11" LONG), PART# MB7919
	2	4	4	RL-45 REUSABLE RECESS MEMBER, 8TON, PART# MB79121
	6	1	1	9.5 C.Y. CONCRETE MIX

THE PROFESSIONAL ENGINEER'S STAMP AND SEAL ARE REQUIRED UNDER THE DIRECT SUPERVISION OF A REGISTERED PROFESSIONAL ENGINEER AND COMPLY WITH THE DESIGN AND DETAILS SHOWN ON THE CONTRACT DRAWING UNLESS REQUESTED OTHERWISE.

CONTRACTOR: BECK & BELLUCCI, INC.
PROJECT: BRATTLEBORO, VERMONT
IM 019-1(60)

STATE OF VERMONT
BRUCE C. DALEY
NO. 87
LICENSED PROFESSIONAL ENGINEER

W.E. DALEY INC.
PRECAST CONCRETE PRODUCTS
1000 Rte. 100, Brattleboro, VT 05751
TEL: 802-254-4444 FAX: 802-254-4444
DANIEL MARCHI 2011 PROFESSIONAL ENGINEER REGISTRATION

I-91 BRATTLEBORO, VERMONT
OVER MAPLE ST.

BEAM TYPE "C3-SB"
DIMENSIONAL DETAILS

SHEET NUMBER
23