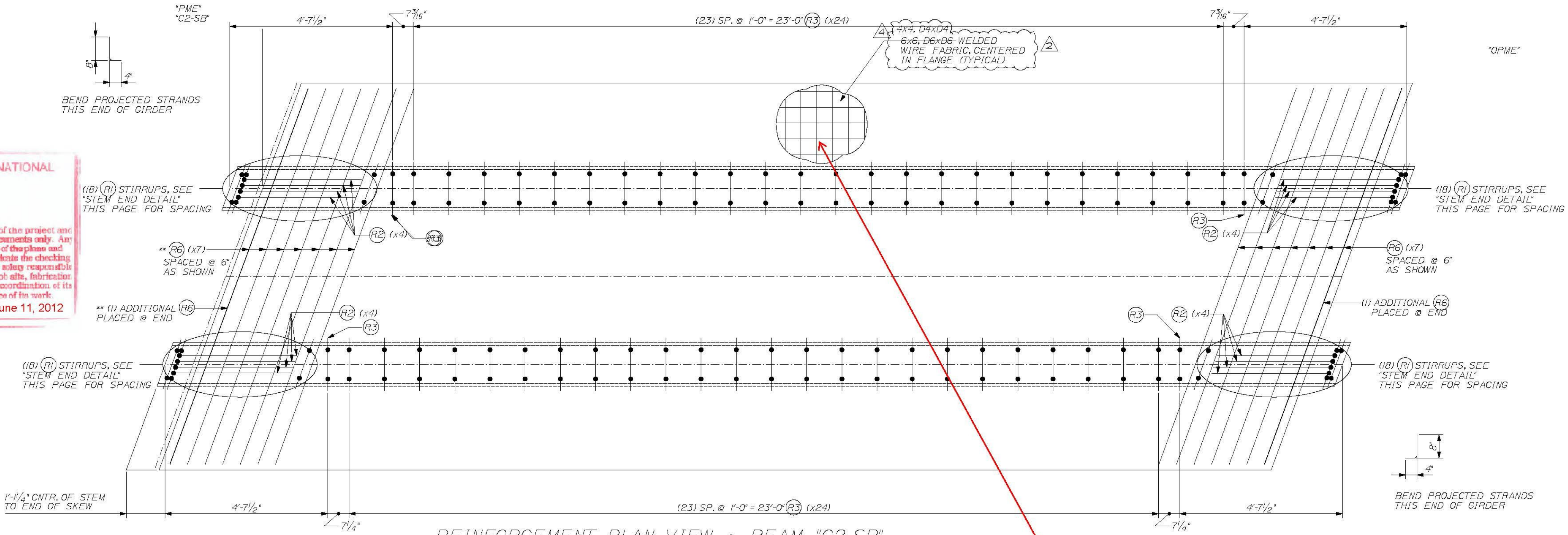


T-Y LIN INTERNATIONAL

No Description Taken
 Make Correction as Noted
 Submit Specified Item
 Revise and Resubmit as Noted
 Rejected

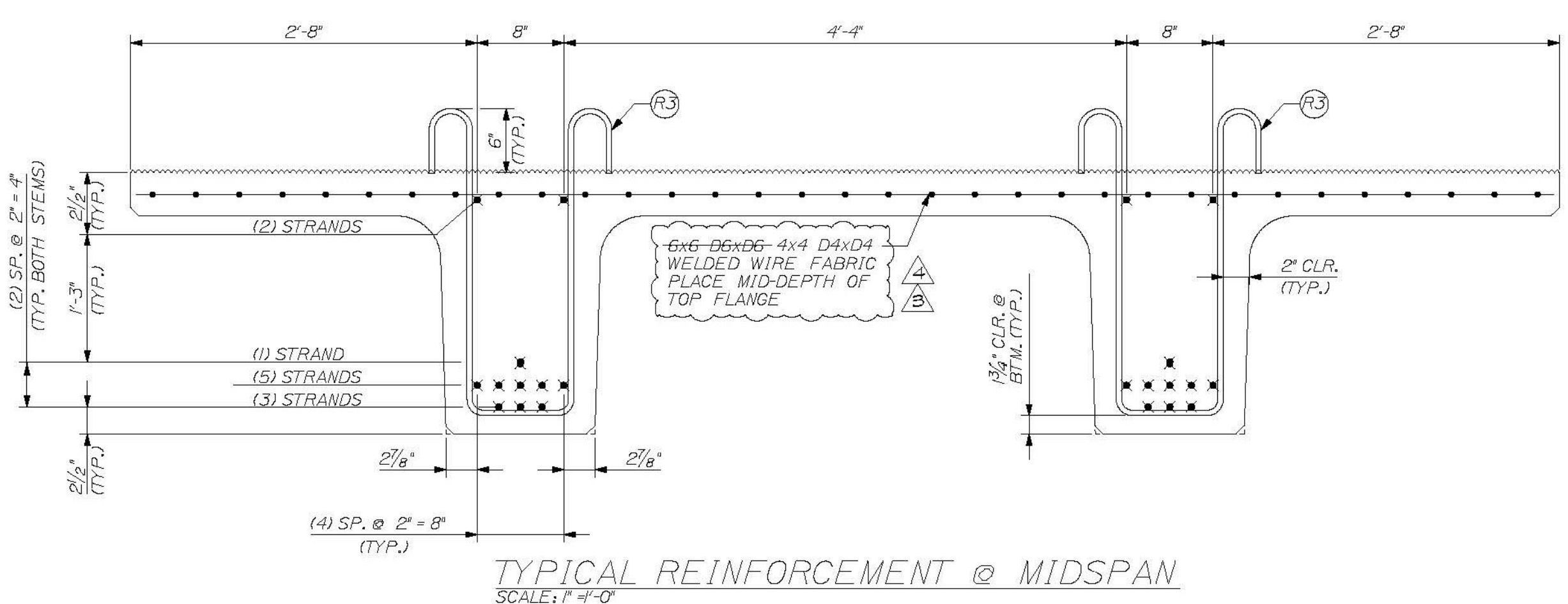
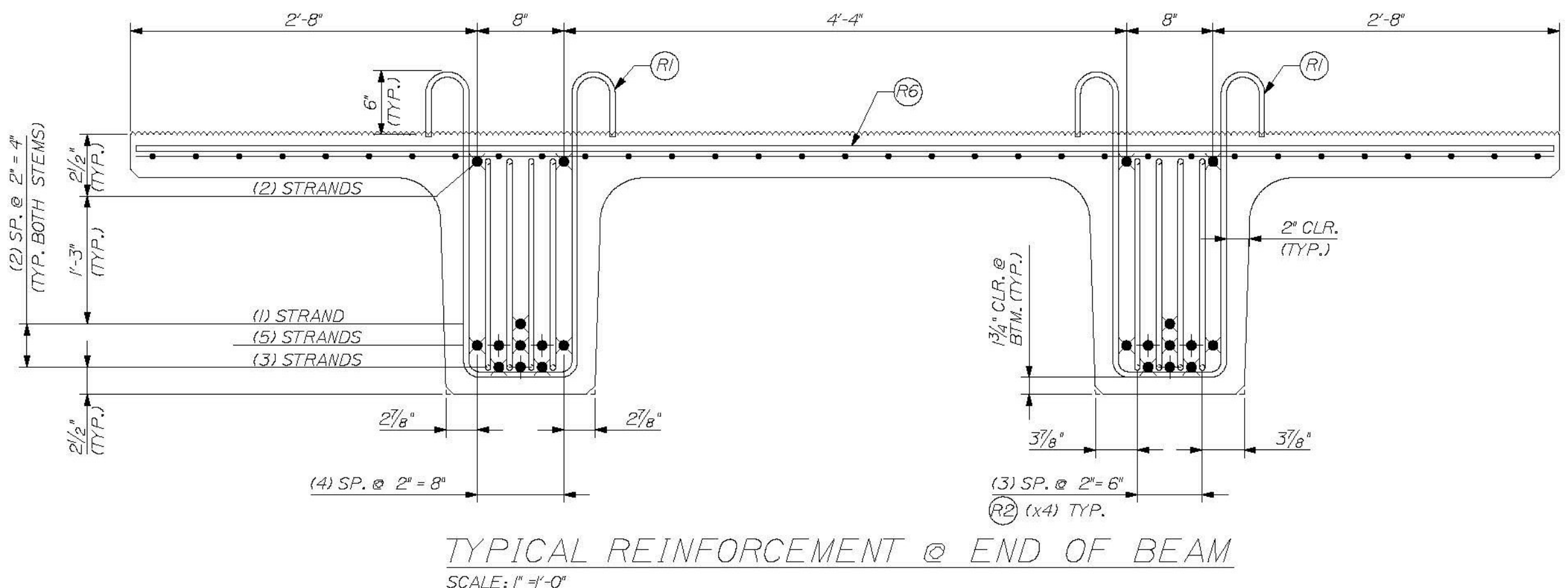
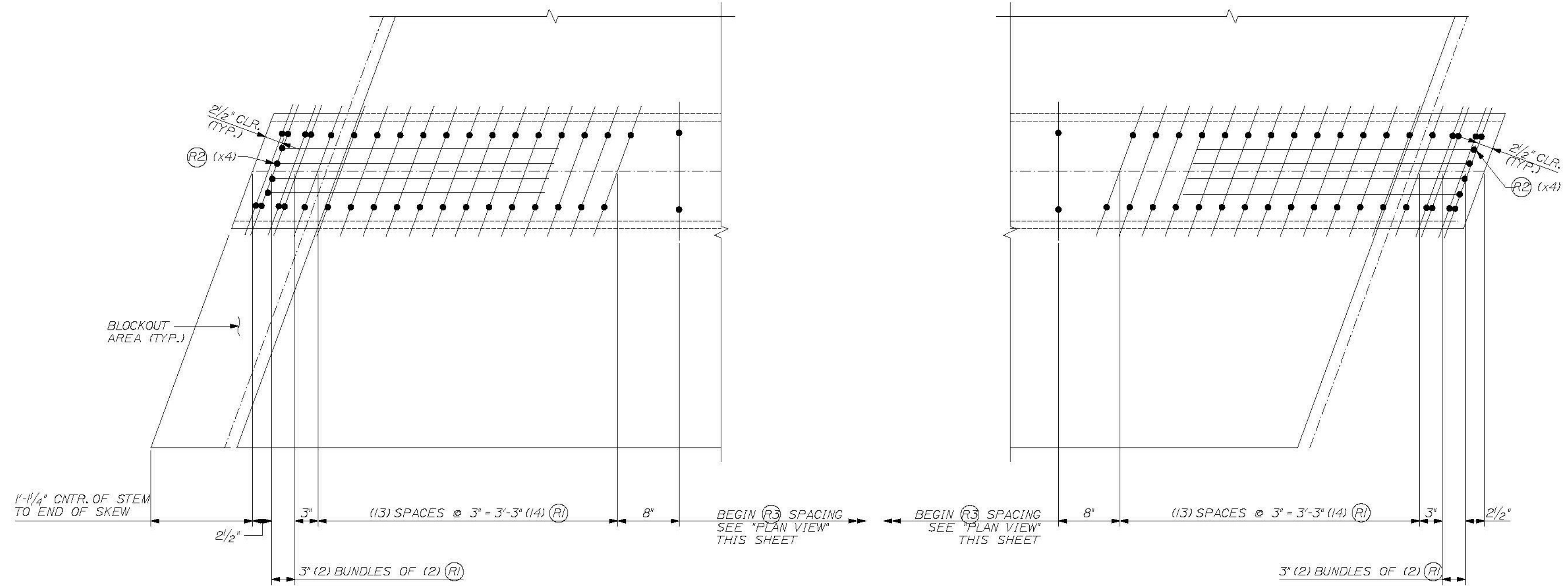
Checking is for general compliance with the design concept of the project and general compliance with the information given in the contract documents only. Any action shown is not an approval and is subject to the requirements of the plans and specifications. Any action shown on a specific item shall not indicate the checking of an assembly of which the item is a component. Contractor is solely responsible for dimensions which shall be confirmed and corrected at the job site, fabrication processes, techniques of construction, safety precautions, and coordination of its work with that of all other trades and the satisfactory performance of its work.

Reviewed by: *[Signature]* Date: June 11, 2012



IF WWF NEEDS TO BE CUT TO PLACE OVER STIRRUPS USE PROCEDURE BELOW:

- FOR CUT TRANSVERSE WIRE, SPLICE A #3 x 45" EPOXY COATED REBAR ORIENTED IN THE SAME DIRECTION OF THE CUT WIRE AND CENTERED.
- FOR CUT LONGITUDINAL WIRE, SPLICE A #3 x 28" EPOXY COATED REBAR ORIENTED IN THE SAME DIRECTION OF THE CUT WIRE AND CENTERED.



STRAND LEGEND

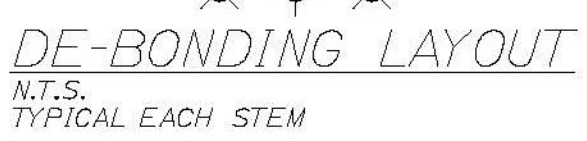
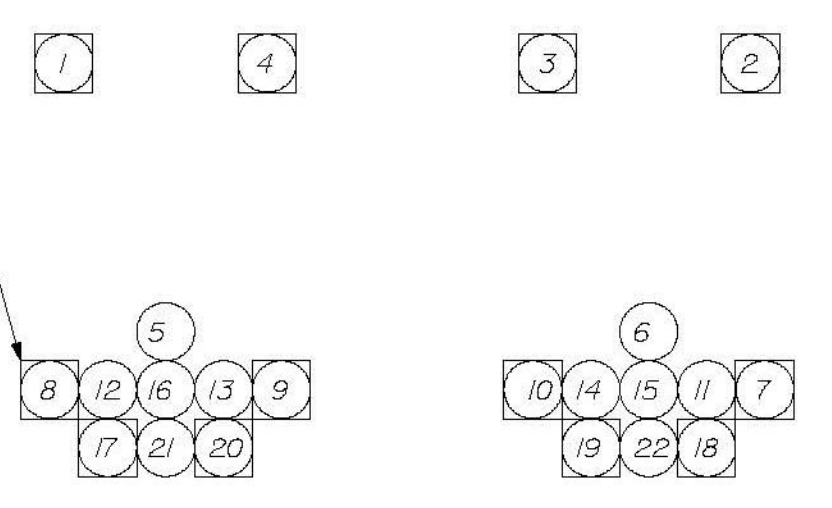
●	0.6" FULLY TENSIONED STRAND
○	0.6" FULLY TENSIONED STRAND (DEBOND 0.50 FEET)
⊗	0.6" FULLY TENSIONED STRAND (DEBOND 6 FEET)
⊕	0.6" FULLY TENSIONED STRAND (DEBOND 12 FEET)

*EXTEND STRANDS 1,4,8,9,17 & 20 IN THE "LEFT" STEM AND STRANDS 2,3,7,10,18 & 19 IN THE "RIGHT" STEM BY A LENGTH OF 12" BEYOND THE END OF THE BEAM. BEND PER DETAILS NOTED ABOVE.

ALL OTHER STRANDS SHALL EXTEND 4" BEYOND THE END OF THE BEAM.

NOTES:
BENT BAR LENGTHS SHOWN REPRESENT BAR LENGTHS BEFORE BENDING.
TENSION LOAD = 43.94 KIPS/ STRAND
STRAND: 16 #4, 270 KSI LOW RELAXATION, ASTM M203
REBAR: AASHTO M31, GRADE 60, EPOXY COATED
ALL TOLERANCES TO PCI STANDARDS

(1) "C2-SB" NEXT BEAM BEAM REQUIRED
SEE SHEET #21 FOR GEOMETRIC DETAILS
SEE SHEET #2 FOR BENT REBAR DETAILS



REINFORCING CHART

ITEM	QTY.	TOTAL	SIZE	TYPE	LENGTH
R1	72	72	4	BENT	6'-10"
R2	16	16	4	BENT	8'-3 1/4"
R3	52	52	4	BENT	6'-9 1/2"
R6	16	16	4	STRT.	11'-4 1/2"
---	350 sf.	350 sf.			4x4 D4x04 WELDED WIRE FABRIC

BAR SIZE	WT./BEAM	TOTAL WT.
4	772	772
WWF	300	300

THE PROFESSIONAL ENGINEER'S STAMP WAS PREPARED UNDER THE DIRECT SUPERVISION OF A REGISTERED PROFESSIONAL ENGINEER AND COMPLY WITH THE DESIGN AND DETAILS SHOWN ON THE CONTRACT DRAWING UNLESS REQUESTED OTHERWISE.

CONTRACTOR: BECK & BELLUCCI, INC.
PROJECT: BRATTLEBORO, VERMONT
IM 019-1(60)

STATE OF VERMONT
ERIC CALDERWOOD
NO. 8724
LICENSED PROFESSIONAL ENGINEER

W.E. DALEY, INC.
PRECAST CONCRETE PRODUCTS
1000 MAPLE ST. BRATTLEBORO, VT 05701
TEL: 802-442-7178
FAX: 802-442-7179
DETAILS PER: NYC

I-91 BRATTLEBORO, VERMONT
OVER MAPLE ST.

BEAM TYPE "C2-SB"
REINFORCEMENT DETAILS

SHEET NUMBER
22