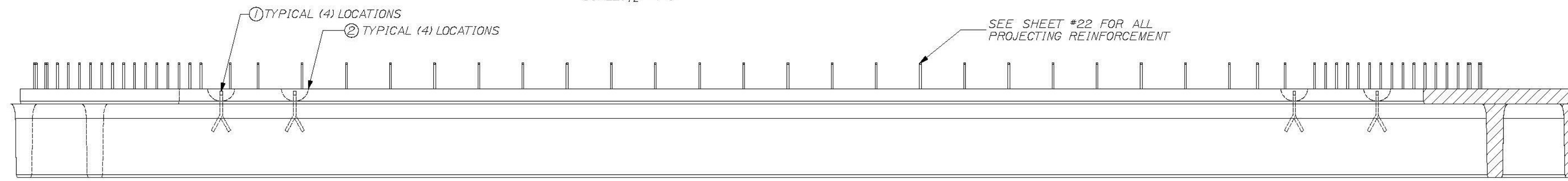
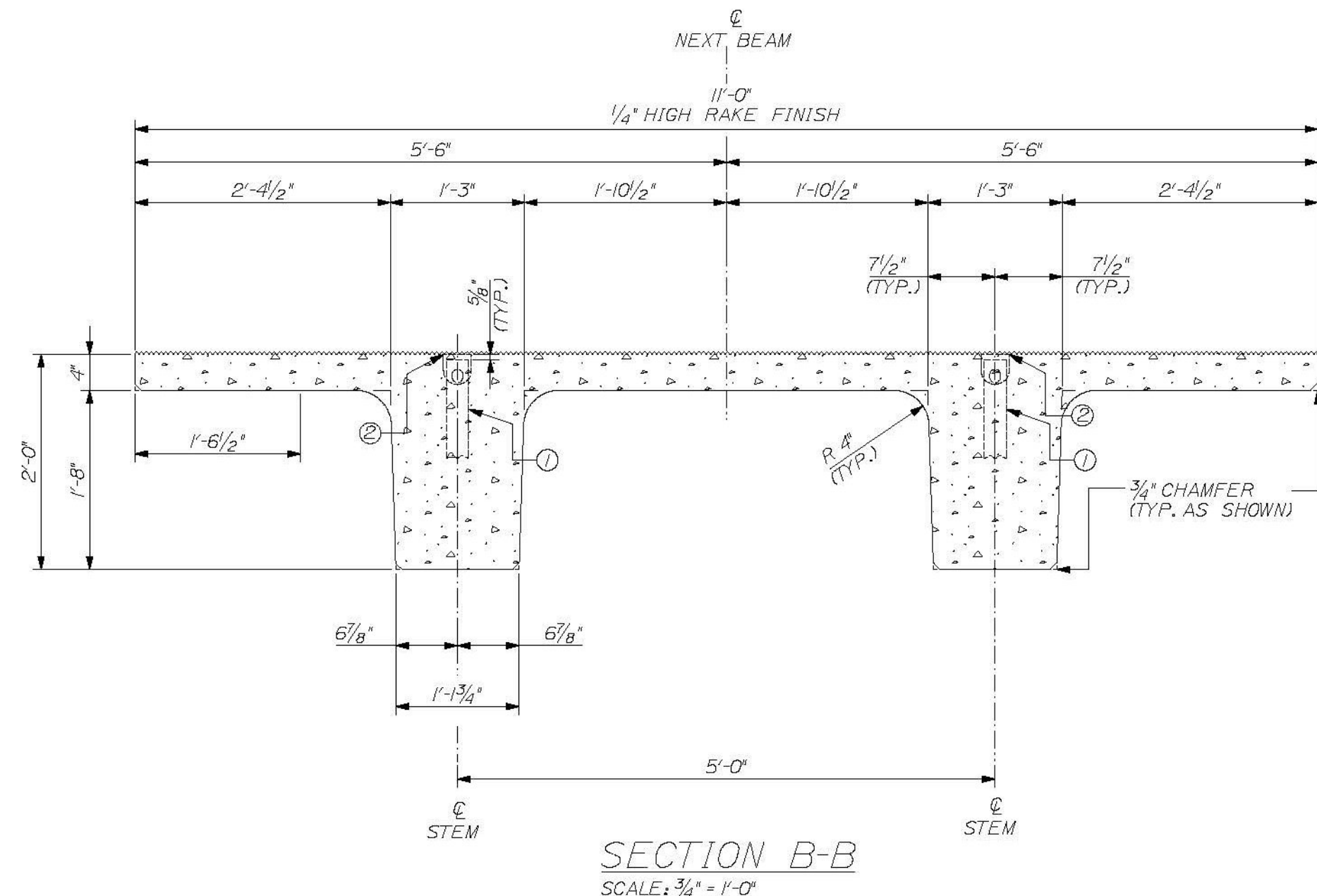


PLAN VIEW ~ BEAM "C2-SB"
SCALE: 1/2" = 1'-0"



VIEW A ~ TYPICAL BOTH SIDES
SCALE: 1/2" = 1'-0"



SECTION B-B
SCALE: 3/4" = 1'-0"

T.Y. LIN INTERNATIONAL

No Description taken
 Make Correction as Noted
 Submit Specified Item
 Revise and Resubmit as Noted
 Rejected

Checking is for general compliance with the design concept of the project and general compliance with the information given in the contract documents only. Any action shown is not an approval and is subject to the requirements of the plans and specifications. Any action shown on a specific item shall not include the checking of an assembly of which the item is a component. Contractor is safety responsible for dimensions which shall be confirmed and corrected at the job site, fabrication processes, techniques of construction, safety precautions, and coordination of its work with that of all other trades and the satisfactory performance of its work.

reviewed by: *[Signature]* Date: June 11, 2012

DESIGN NOTES:

CONCRETE f'_{ci} @ TRANSFER = 6000 PSI
 f'_c @ FINAL = 8000 PSI
 CAMBER @ DESTRESS = 1/2 in.
 CAMBER @ ERECTION = 7/8 in.
 FINISH - TOPS OF BEAMS TO RECEIVE RAKE FINISH W/ 1/4" AMPLITUDE
 PATCH RECESS VOIDS FLUSH WITH SURFACE WITH CEMENT MORTAR
 ALL TOLERANCES TO PCI STANDARDS

(1) "C2-SB" DECK BEAMS REQUIRED
 SEE SHEET #22 FOR REINFORCING

DUE TO INHERENT VARIABLES, CAMBERS ARE PROVIDED ONLY AS A MEANS OF QUANTIFYING THE CONSISTENCY OF PRODUCTION AND QUALITY CONTROL AND SHOULD NEVER BE CONSIDERED ANY BETTER THAN ESTIMATES.

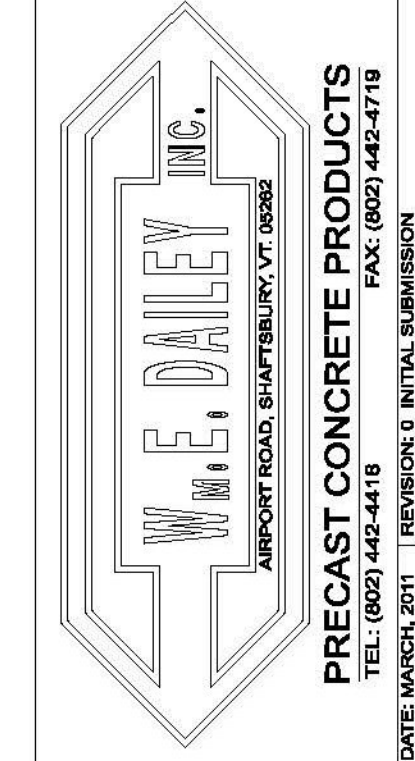
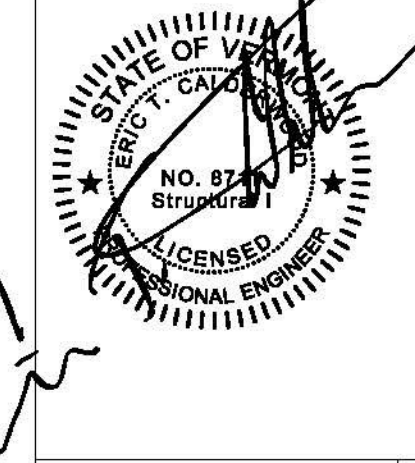
PRODUCT WEIGHT

PRODUCT	WEIGHT
"C2-SB"	18.9 TONS

BILL OF MATERIALS

REMARKS	#	QTY	TOTAL	DESCRIPTION
SEE SHEET #2	1	4	4	RL-23 SPREAD ANCHOR, 8 TON, (11" LONG), PART# MB7919
	2	4	4	RL-45 REUSABLE RECESS MEMBER, 8TON, PART# MB79121
	6	1	1	9.5 C.Y. CONCRETE MIX

THE PROFESSIONAL ENGINEER'S STAMP
 WERE PREPARED UNDER THE DIRECT
 SUPERVISION OF A REGISTERED PROFESSIONAL
 ENGINEER AND COMPLY WITH THE DESIGN AND
 DETAILS SHOWN ON THE CONTRACT DRAWING
 UNLESS REQUESTED OTHERWISE.
CONTRACTOR: BECK & BELLUCCI, INC.
PROJECT: BRATTLEBORO, VERMONT
IM 019-1(60)



I-91 BRATTLEBORO, VERMONT
 OVER MAPLE ST.
 BEAM TYPE "C2-SB"
 DIMENSIONAL DETAILS

SHEET NUMBER
21