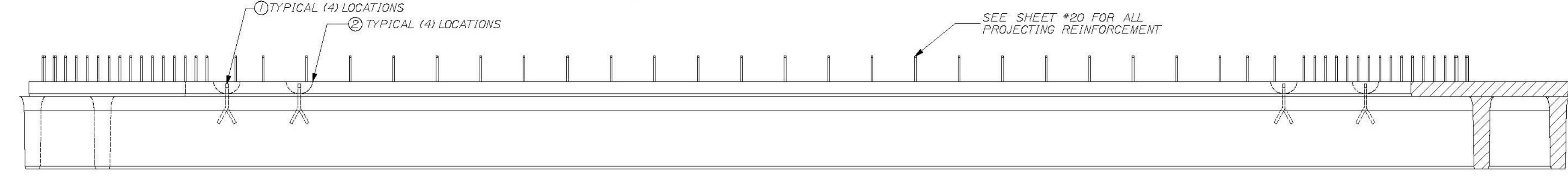
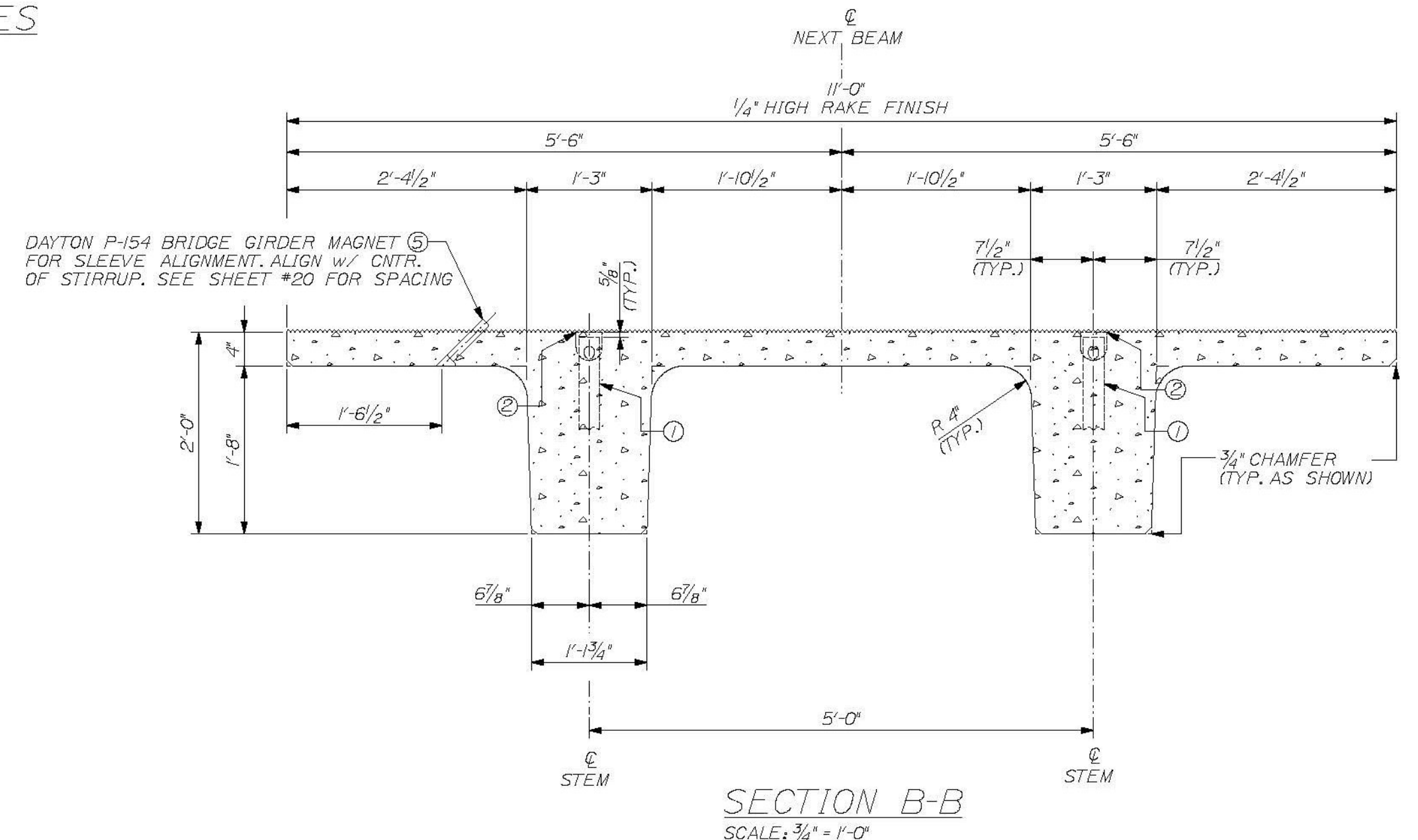


PLAN VIEW ~ BEAM "C1-SB"
SCALE: 1/2" = 1'-0"



VIEW A ~ TYPICAL BOTH SIDES
SCALE: 1/2" = 1'-0"



SECTION B-B
SCALE: 3/4" = 1'-0"

T-Y-LIN INTERNATIONAL
 Checked by: [Signature] Date: June 11, 2012
 No Exception Taken
 Make Correction as Noted
 Submit Specified Item
 Review and Resubmit as Noted
 Rejected

DESIGN NOTES:
 CONCRETE f'_{ci} @ TRANSFER = 6000 PSI
 f'_c @ FINAL = 8000 PSI
 CAMBER @ DESTRESS = 1/2 in.
 CAMBER @ ERECTION = 7/8 in.
 FINISH - TOPS OF BEAMS TO RECEIVE RAKE FINISH W/ 1/4" AMPLITUDE
 PATCH RECESS VOIDS FLUSH WITH SURFACE WITH CEMENT MORTAR
 ALL TOLERANCES TO PCI STANDARDS

(1) "C1-SB" DECK BEAMS REQUIRED
 SEE SHEET #20 FOR REINFORCING

DUE TO INHERENT VARIABLES, CAMBERS ARE PROVIDED ONLY AS A MEANS OF QUANTIFYING THE CONSISTENCY OF PRODUCTION AND QUALITY CONTROL AND SHOULD NEVER BE CONSIDERED ANY BETTER THAN ESTIMATES.

PRODUCT WEIGHT

PRODUCT	WEIGHT
"C1-SB"	18.9 TONS

BILL OF MATERIALS

REMARKS	#	QTY	TOTAL	DESCRIPTION
SEE SHEET #2	1	4	4	RL-23 SPREAD ANCHOR, 8 TON, (11" LONG), PART# MB7919
	2	4	4	RL-45 REUSABLE RECESS MEMBER, 8TON, PART# MB79121
	5	11	11	DAYTON P-154 BRIDGE GIRDER MAGNET
	6	1	1	9.5 C.Y. CONCRETE MIX

THE PROFESSIONAL ENGINEER'S STAMP AND SEAL ARE REQUIRED FOR ALL DRAWINGS PREPARED UNDER THE DIRECT SUPERVISION OF A REGISTERED PROFESSIONAL ENGINEER AND COMPLY WITH THE DESIGN AND DETAILS SHOWN ON THE CONTRACT DRAWING UNLESS REQUESTED OTHERWISE.

CONTRACTOR: BECK & BELLUCCI, INC.
 PROJECT: BRATTLEBORO, VERMONT
 IM 019-1(60)

STATE OF VERMONT
 BRUCE C. DALEY, INC.
 NO. 87
 LICENSED PROFESSIONAL ENGINEER

W.E. DALEY, INC.
 PRECAST CONCRETE PRODUCTS
 100 W. STATE ST., BRATTLEBORO, VT. 05701
 TEL: 802-253-4323 FAX: 802-253-4324
 DANIEL MARCHI, 2011 PROFESSIONAL ENGINEER REGISTRATION NO. 1442-719
 DANIEL MARCHI, 2011 PROFESSIONAL ENGINEER REGISTRATION NO. 1442-719

I-91 BRATTLEBORO, VERMONT
 OVER MAPLE ST.

BEAM TYPE "C1-SB"
 DIMENSIONAL DETAILS

SHEET NUMBER
 19