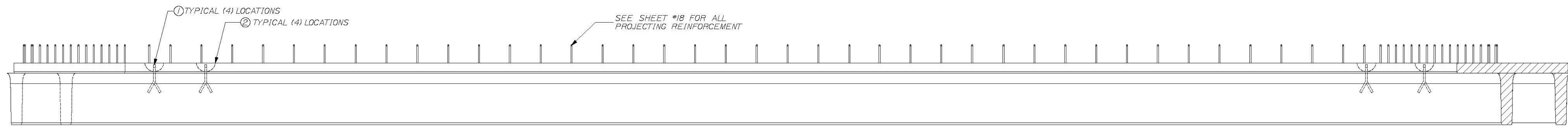


PLAN VIEW ~ BEAM "B4-SB"
SCALE: 1/2" = 1'-0"



VIEW A ~ TYPICAL BOTH SIDES
SCALE: 1/2" = 1'-0"

T-Y-LIN INTERNATIONAL

No Exception Taken
 Make Correction as Noted
 Submit Specified Item
 Review and Resubmit as Noted
 Rejected

Checking is for general compliance with the design concept of the project and general compliance with the information given in the contract documents only. Any action shown is not an approval and is subject to the requirements of the phone and specifications. Any action shown on a specific item shall not indicate the checking of an assembly of which the item is a component. Contractor is solely responsible for dimensions which shall be confirmed and correlated at the job site, fabrication processes, techniques of construction, safety precautions, and coordination of its work with that of all other trades and the satisfactory performance of its work.

Reviewed by: *[Signature]* Date: June 11, 2012

DESIGN NOTES:

CONCRETE f'_{ci} @ TRANSFER = 6200 PSI
 f'_c @ FINAL = 8000 PSI

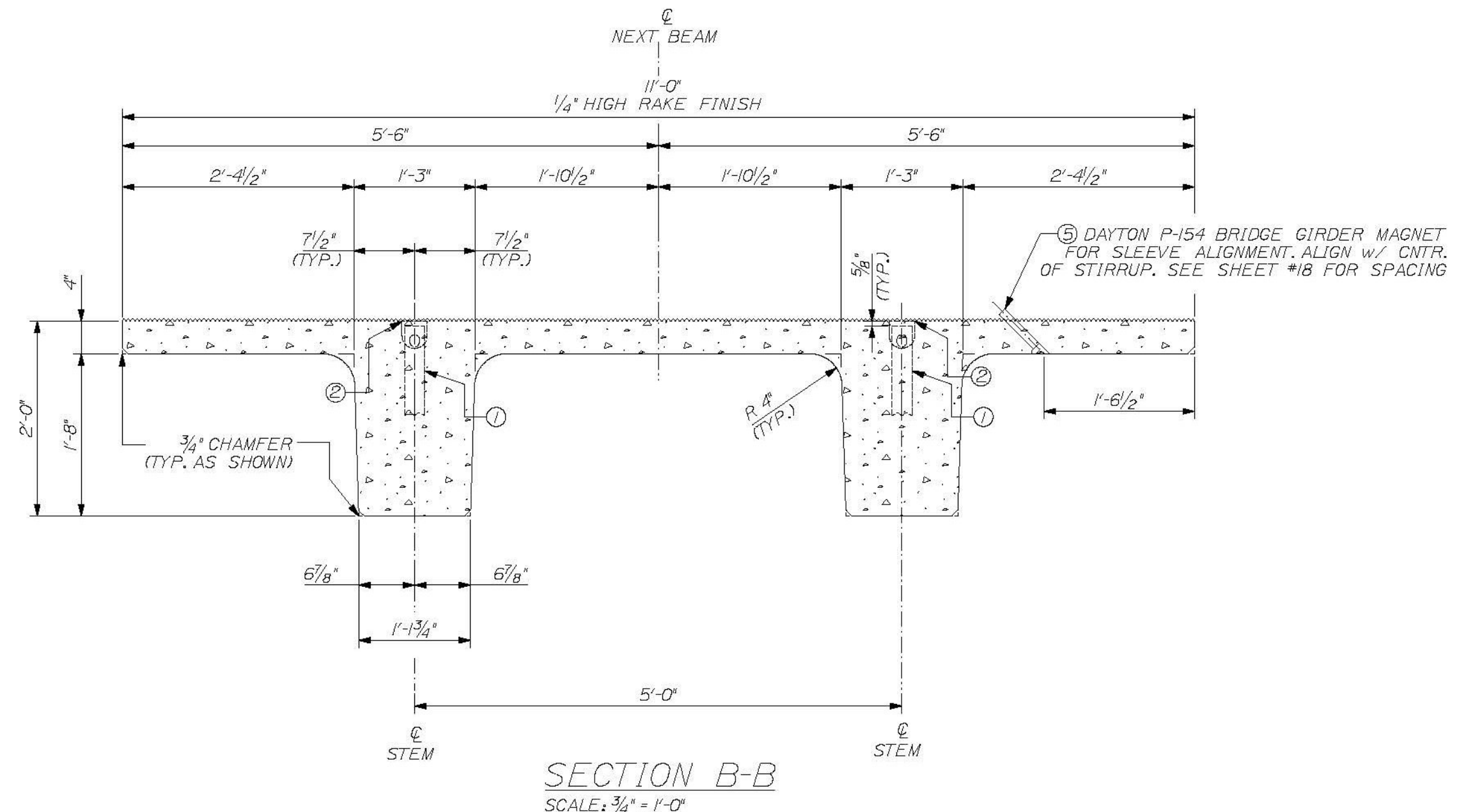
CAMBER @ DESTRESS = 1/4" in.
 CAMBER @ ERECTION = 2 3/16" in.
 FINISH - TOPS OF BEAMS TO RECEIVE RAKE FINISH W/ 1/4" AMPLITUDE
 PATCH RECESS VOIDS FLUSH WITH SURFACE WITH CEMENT MORTAR

ALL TOLERANCES TO PCI STANDARDS

(1) "B4-SB" DECK BEAMS REQUIRED

SEE SHEET #18 FOR REINFORCING

DUE TO INHERENT VARIABLES, CAMBERS ARE PROVIDED ONLY AS A MEANS OF QUANTIFYING THE CONSISTENCY OF PRODUCTION AND QUALITY CONTROL AND SHOULD NEVER BE CONSIDERED ANY BETTER THAN ESTIMATES.



SECTION B-B
SCALE: 3/4" = 1'-0"

PRODUCT WEIGHT

PRODUCT	WEIGHT
"B4-SB"	27.5 TONS

BILL OF MATERIALS

REMARKS	#	QTY	TOTAL	DESCRIPTION
SEE SHEET #2	1	4	4	RL-23 SPREAD ANCHOR, 8 TON, (11" LONG), PART# MB79119
	2	4	4	RL-45 REUSABLE RECESS MEMBER, 8TON, PART# MB79121
	4	1	1	13.5 C.Y. CONCRETE MIX
	5	16	16	DAYTON P-154 BRIDGE GIRDER MAGNET

THE PROFESSIONAL ENGINEER'S STAMP AND SEAL ARE REQUIRED FOR THE DRAWINGS TO BE VALID. THE DRAWINGS WERE PREPARED UNDER THE DIRECT SUPERVISION OF A REGISTERED PROFESSIONAL ENGINEER AND COMPLY WITH THE DESIGN AND DETAILS SHOWN ON THE CONTRACT DRAWING UNLESS REQUESTED OTHERWISE.

CONTRACTOR: BECK & BELLUCCI, INC.
 PROJECT: BRATTLEBORO, VERMONT
 IM 019-1(60)

STATE OF VERMONT
 BRUCE C. DALEY, INC.
 NO. 87
 LICENSED PROFESSIONAL ENGINEER

W.E. DALEY, INC.
 PRECAST CONCRETE PRODUCTS
 100 W. 11th St., Brattleboro, VT 05701
 TEL: 802-442-7178
 FAX: 802-442-7179
 WWW.WEDALEY.COM

I-91 BRATTLEBORO, VERMONT
 OVER MAPLE ST.

BEAM TYPE "B4-SB"
 DIMENSIONAL DETAILS

SHEET NUMBER
 17