

REINFORCING CHART

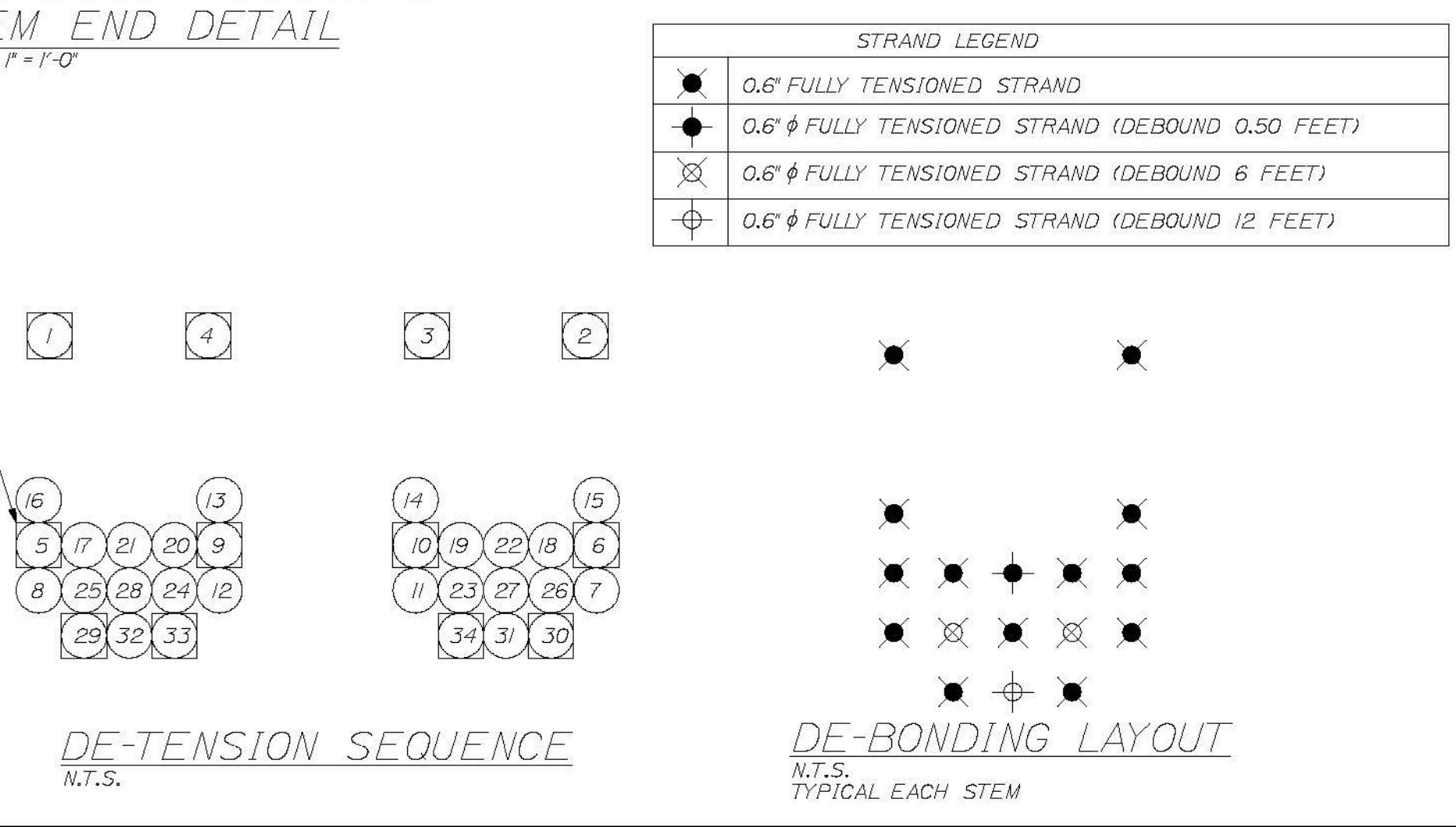
ITEM	QTY.	TOTAL	SIZE	TYPE	LENGTH
R1	72	72	4	BENT	6'-10"
R2	16	16	4	BENT	8'-3 3/4"
R3	82	82	4	BENT	6'-9 1/2"
R5	16	16	4	STRT.	11'-3 1/2"
---	515 sf.	515 sf.			4x4 D4xD4 WELDED WIRE FABRIC

BAR SIZE	WT./BEAM	TOTAL WT.
4	908	908
WWF	440	440

*EXTEND STRANDS 1,4,5,9,29 & 33 IN THE "LEFT" STEM AND STRANDS 2,3,6,10,30 & 34 IN THE "RIGHT" STEM BY A LENGTH OF 12" BEYOND THE END OF THE BEAM. BEND PER DETAILS NOTED ABOVE.

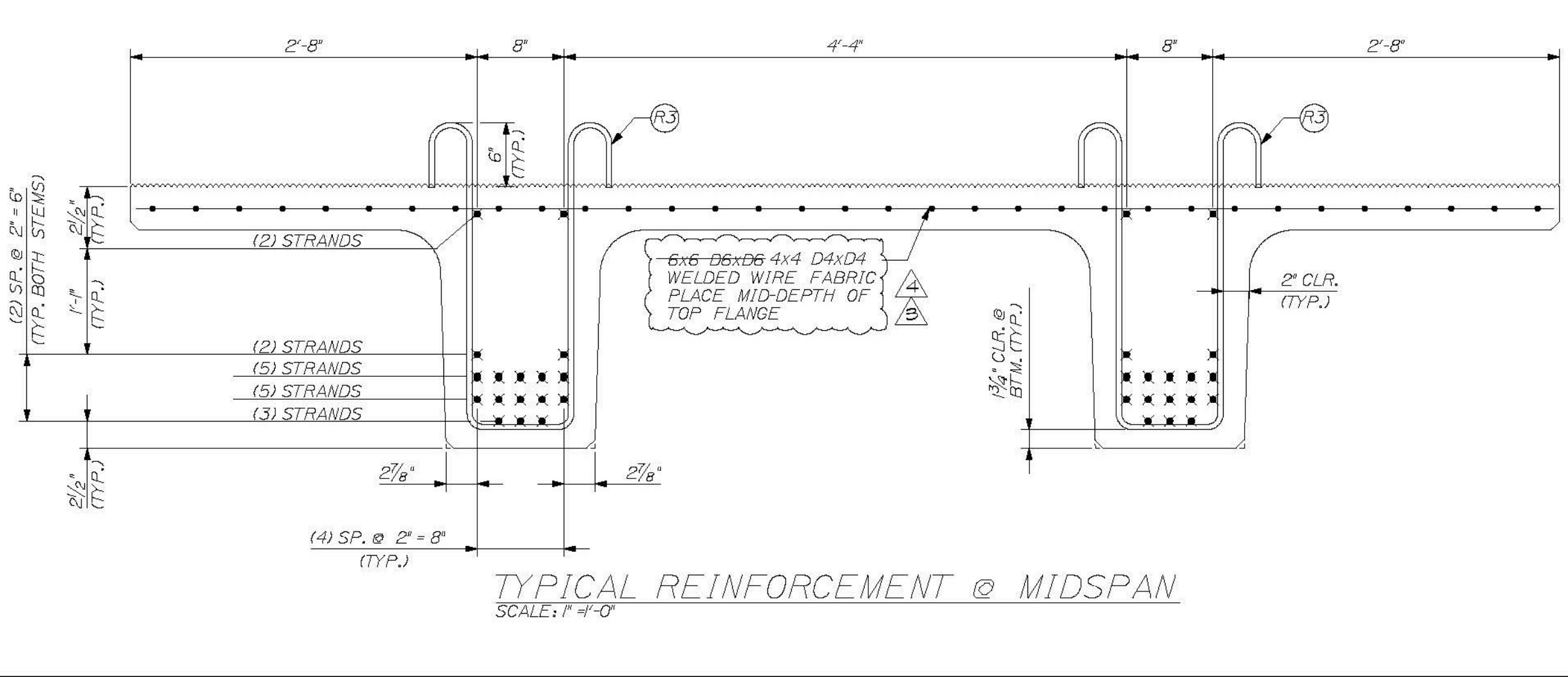
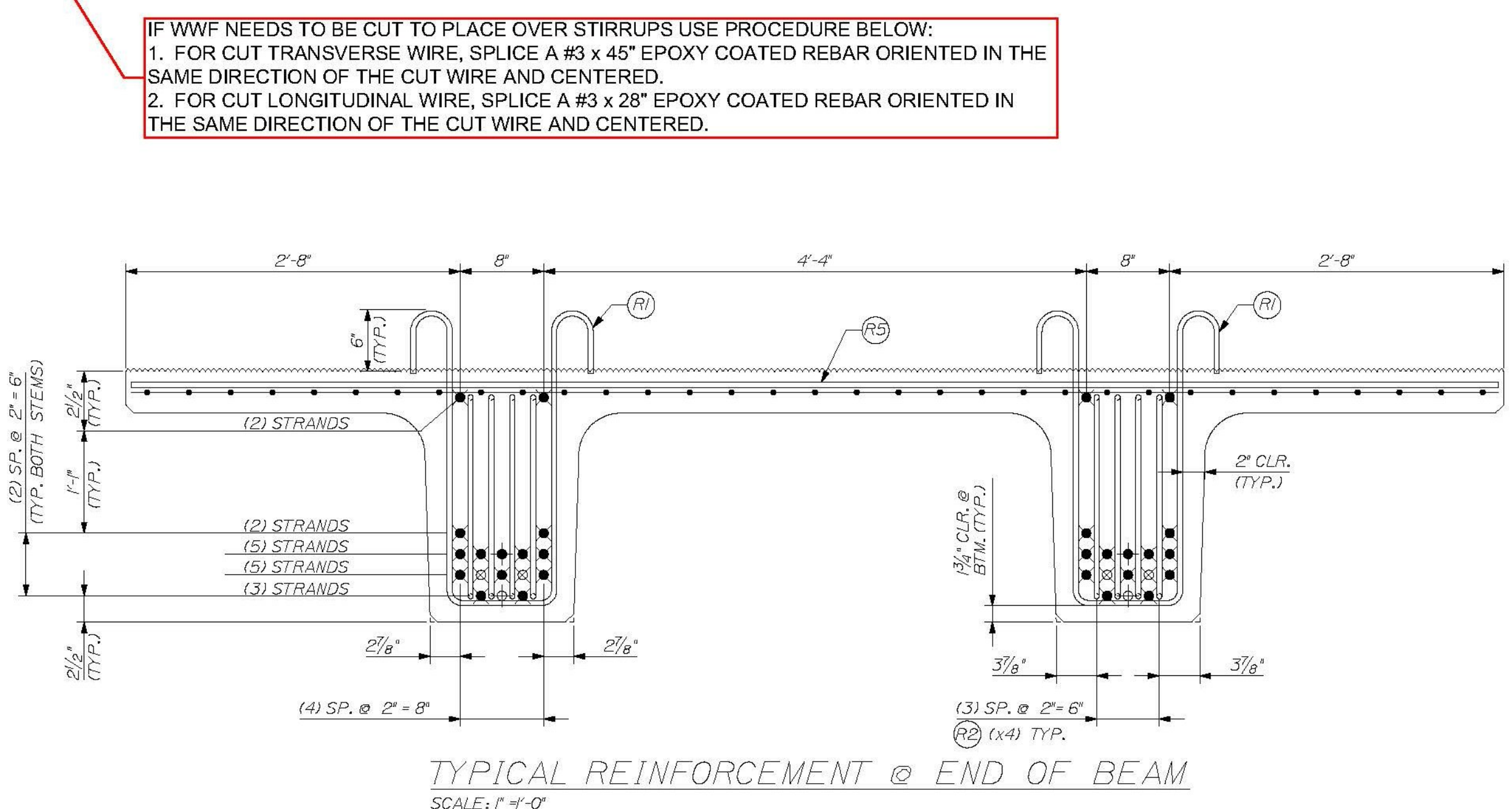
ALL OTHER STRANDS SHALL EXTEND 4" BEYOND THE END OF THE BEAM.

NOTES:
BENT BAR LENGTHS SHOWN REPRESENT BAR LENGTHS BEFORE BENDING.
TENSION LOAD = 43.94 KIPS/ STRAND
STRAND: 16 #4, 270 KSI, LOW RELAXATION, ASTM M203
REBAR: AASHTO M31, GRADE 60, EPOXY COATED
ALL TOLERANCES TO PCI STANDARDS
(1) "B3-SB" NEXT BEAM BEAM REQUIRED
SEE SHEET #15 FOR GEOMETRIC DETAILS
SEE SHEET #2 FOR BENT REBAR DETAILS



STRAND LEGEND

●	0.6" FULLY TENSIONED STRAND
○	0.6" FULLY TENSIONED STRAND (DEBOND 0.50 FEET)
⊗	0.6" FULLY TENSIONED STRAND (DEBOND 6 FEET)
⊕	0.6" FULLY TENSIONED STRAND (DEBOND 12 FEET)



IF WWF NEEDS TO BE CUT TO PLACE OVER STIRRUPS USE PROCEDURE BELOW:
1. FOR CUT TRANSVERSE WIRE, SPLICE A #3 x 45" EPOXY COATED REBAR ORIENTED IN THE SAME DIRECTION OF THE CUT WIRE AND CENTERED.
2. FOR CUT LONGITUDINAL WIRE, SPLICE A #3 x 28" EPOXY COATED REBAR ORIENTED IN THE SAME DIRECTION OF THE CUT WIRE AND CENTERED.

THE PROFESSIONAL ENGINEER'S STAMP WAS PREPARED UNDER THE DIRECT SUPERVISION OF A REGISTERED PROFESSIONAL ENGINEER AND COMPLY WITH THE DESIGN AND DETAILS SHOWN ON THE CONTRACT DRAWING UNLESS REQUESTED OTHERWISE.

CONTRACTOR: BECK & BELLUCCI, INC.
PROJECT: BRATTLEBORO, VERMONT
IM 019-1(60)

STATE OF VERMONT
BRATTLEBORO, VT.
NO. 87
L. DALEY
REGISTERED PROFESSIONAL ENGINEER

W.E. DALEY, INC.
PRECAST CONCRETE PRODUCTS
100 W. MAIN ST., BRATTLEBORO, VT. 05701
TEL: 802-244-7178
FAX: 802-244-7179
WWW.WEDALEY.COM

I-91 BRATTLEBORO, VERMONT
OVER MAPLE ST.

BEAM TYPE "B3-SB"
REINFORCEMENT DETAILS

SHEET NUMBER
16