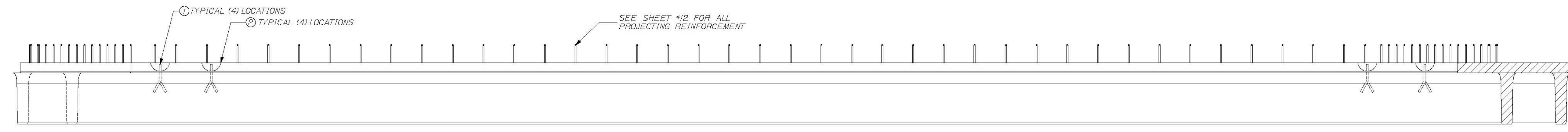


PLAN VIEW ~ BEAM "B1-SB"  
SCALE: 1/2" = 1'-0"



VIEW A ~ TYPICAL BOTH SIDES  
SCALE: 1/2" = 1'-0"

**T-Y-LIN INTERNATIONAL**

No Exception Taken  
 Make Correction as Noted  
 Submit Specified Item  
 Revise and Resubmit as Noted  
 Rejected

Checking in for general compliance with the design concept of the project and general compliance with the information given in the contract documents only. Any notes shown are not an approval and is subject to the requirements of the phase and specifications. Any notes shown on a specific item shall not include the checking of an assembly of which the item is a component. Contractor is solely responsible for dimensions which shall be confirmed and correlated at the job site, fabrication processes, techniques of construction, safety precautions, and coordination of its work with that of all other trades and the satisfactory performance of its work.

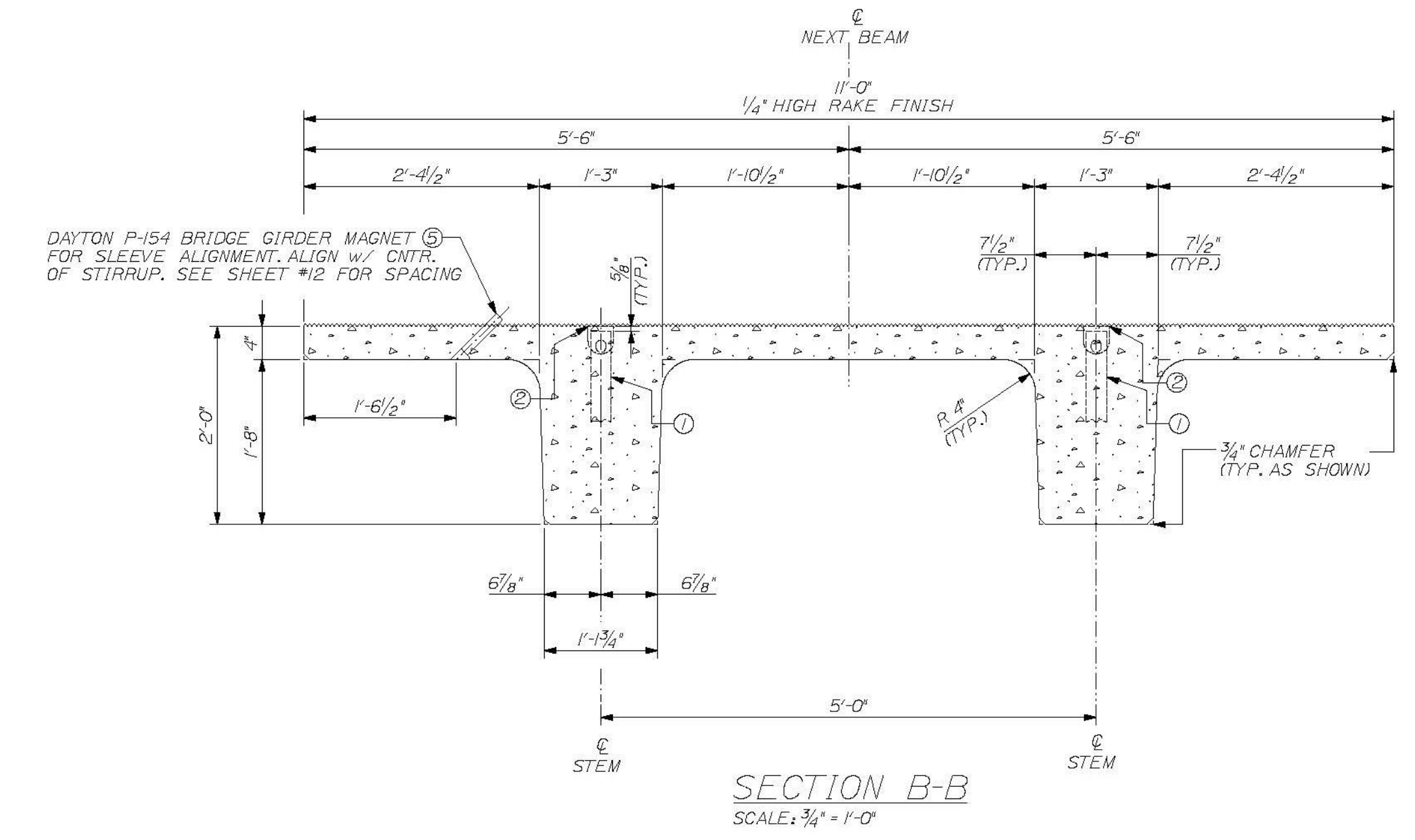
Approved by: *[Signature]* Date: June 11, 2012

**DESIGN NOTES:**

CONCRETE  $f'_c$  @ TRANSFER = 6200 PSI  
 $f'_c$  @ FINAL = 8000 PSI  
 CAMBER @ DESTRESS = 1/4" in.  
 CAMBER @ ERECTION = 2 3/16" in.  
 FINISH - TOPS OF BEAMS TO RECEIVE RAKE FINISH W/ 1/4" AMPLITUDE  
 PATCH RECESS VOIDS FLUSH WITH SURFACE WITH CEMENT MORTAR  
 ALL TOLERANCES TO PCI STANDARDS

(1) "B1-SB" DECK BEAMS REQUIRED  
SEE SHEET #12 FOR REINFORCING

DUE TO INHERENT VARIABLES, CAMBERS ARE PROVIDED ONLY AS A MEANS OF QUANTIFYING THE CONSISTENCY OF PRODUCTION AND QUALITY CONTROL AND SHOULD NEVER BE CONSIDERED ANY BETTER THAN ESTIMATES.



SECTION B-B  
SCALE: 3/4" = 1'-0"

**PRODUCT WEIGHT**

PRODUCT	WEIGHT
"B1-SB"	27.5 TONS

**BILL OF MATERIALS**

REMARKS	#	QTY	TOTAL	DESCRIPTION
SEE SHEET #2	1	4	4	RL-23 SPREAD ANCHOR, 8 TON, (11" LONG), PART# MB79H9
	2	4	4	RL-45 REUSABLE RECESS MEMBER, 8TON, PART# MB79I2I
	4	1	1	13.5 C.Y. CONCRETE MIX
	5	16	16	DAYTON P-154 BRIDGE GIRDER MAGNET

THE PROFESSIONAL ENGINEER'S STAMP AND SEAL ARE REQUIRED FOR THE DRAWINGS TO BE PREPARED UNDER THE DIRECT SUPERVISION OF A REGISTERED PROFESSIONAL ENGINEER AND COMPLY WITH THE DESIGN AND DETAILS SHOWN ON THE CONTRACT DRAWING UNLESS REQUESTED OTHERWISE.

CONTRACTOR: BECK & BELLUCCI, INC.  
PROJECT: BRATTLEBORO, VERMONT  
IM 019-1(60)

STATE OF VERMONT  
BRUCE C. DALEY  
NO. 87  
LICENSED PROFESSIONAL ENGINEER

**W.E. DALEY, INC.**  
PRECAST CONCRETE PRODUCTS  
1000 STATE ST. BRATTLEBORO, VT 05701  
TEL: 802-253-4424 FAX: 802-253-4424  
WWW.WEDALEY.COM

I-91 BRATTLEBORO, VERMONT  
OVER MAPLE ST.

BEAM TYPE "B1-SB"  
DIMENSIONAL DETAILS

SHEET NUMBER  
**11**