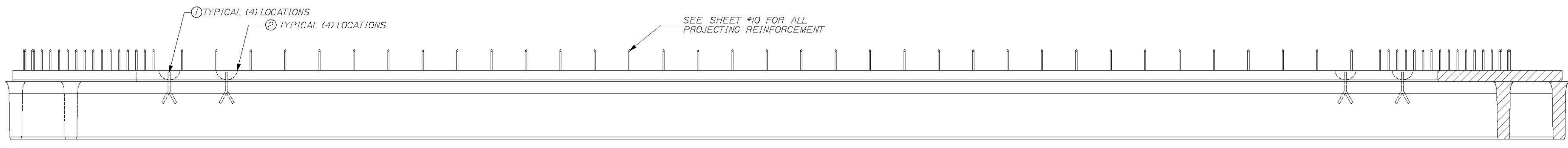
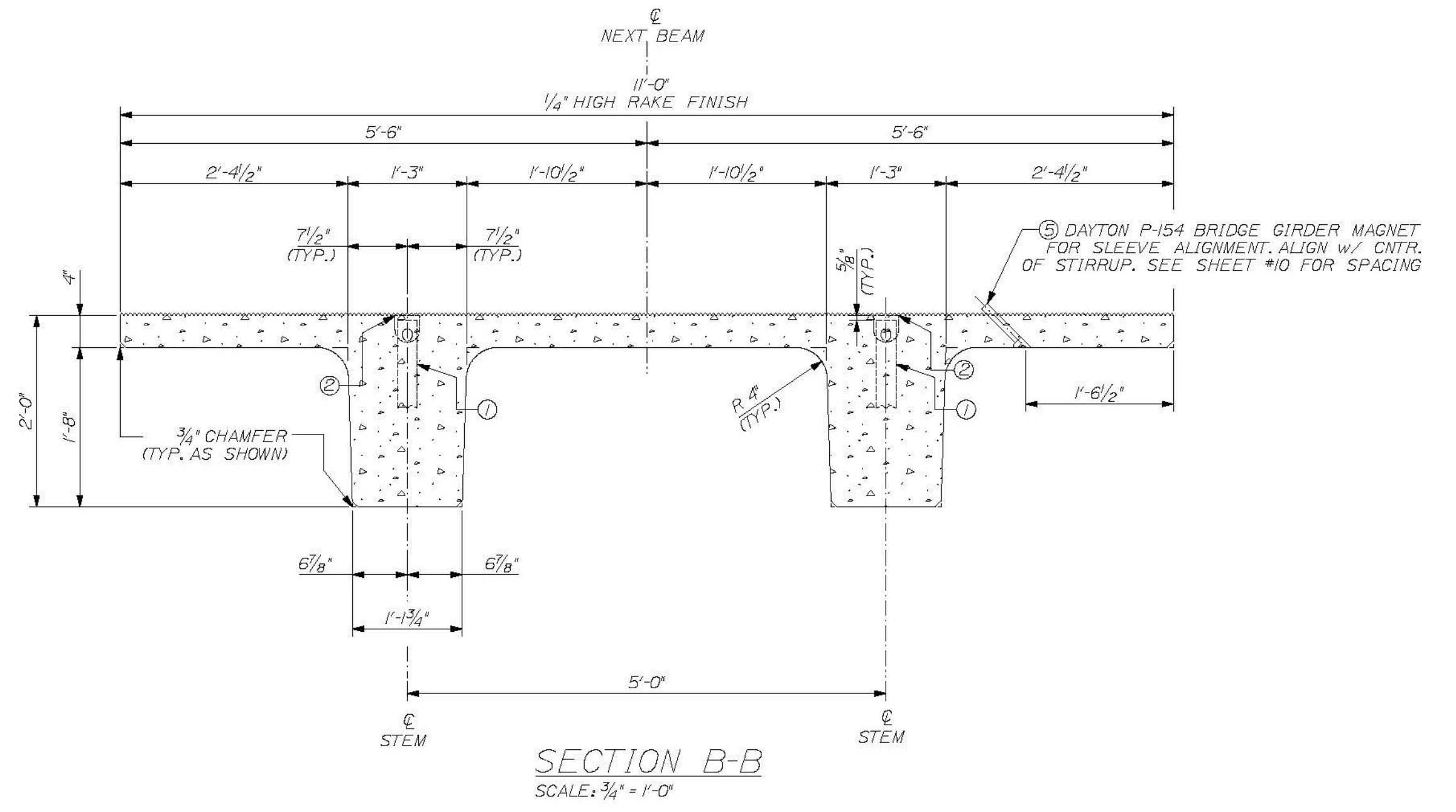


PLAN VIEW ~ BEAM "A4-SB"  
SCALE: 1/2" = 1'-0"



VIEW A ~ TYPICAL BOTH SIDES  
SCALE: 1/2" = 1'-0"



SECTION B-B  
SCALE: 3/4" = 1'-0"

**T.Y. LIN INTERNATIONAL**  
 No Exception Taken  
 Make Correction as Noted  
 Submit Specified Item  
 Revise and Resubmit as Noted  
 Rejected  
 Checked for general compliance with the design concept of the project and general compliance with the information given in the contract documents only. Any notes shown in red are an approval and is subject to the requirements of the plans and specifications. Any notes shown on a specific item shall not include the checking of an assembly of which the item is a component. Contractor is solely responsible for dimensions which shall be confirmed and corrected at the job site. Fabrication processes, techniques of construction, safety precautions and coordination of its work with that of all other trades and the satisfactory performance of its work.  
 Reviewed by: *[Signature]* Date: June 11, 2012

**DESIGN NOTES:**  
 CONCRETE  $f'_{ci}$  @ TRANSFER = 6200 PSI  
 $f'_c$  @ FINAL = 8000 PSI  
 CAMBER @ DESTRESS = 1/16 in.  
 CAMBER @ ERECTION = 1/16 in.  
 FINISH - TOPS OF BEAMS TO RECEIVE RAKE FINISH W/ 1/4" AMPLITUDE  
 PATCH RECESS VOIDS FLUSH WITH SURFACE WITH CEMENT MORTAR  
 ALL TOLERANCES TO PCI STANDARDS

(1) "A4-SB" DECK BEAMS REQUIRED  
 SEE SHEET #10 FOR REINFORCING

DUE TO INHERENT VARIABLES, CAMBERS ARE PROVIDED ONLY AS A MEANS OF QUANTIFYING THE CONSISTENCY OF PRODUCTION AND QUALITY CONTROL AND SHOULD NEVER BE CONSIDERED ANY BETTER THAN ESTIMATES.

**PRODUCT WEIGHT**

PRODUCT	WEIGHT
"A4-SB"	24.4 TONS

**BILL OF MATERIALS**

REMARKS	#	QTY	TOTAL	DESCRIPTION
SEE SHEET #2	1	4	4	RL-23 SPREAD ANCHOR, 8 TON, (11' LONG), PART# MB79119
	2	4	4	RL-45 REUSABLE RECESS MEMBER, 8TON, PART# MB79121
	3	1	1	12.0 C.Y. CONCRETE MIX
	5	14	14	DAYTON P-154 BRIDGE GIRDER MAGNET

THE PROFESSIONAL ENGINEER'S STAMP WAS PREPARED UNDER THE DIRECT SUPERVISION OF A REGISTERED PROFESSIONAL ENGINEER AND COMPLY WITH THE DESIGN AND DETAILS SHOWN ON THE CONTRACT DRAWING UNLESS REQUESTED OTHERWISE.  
**CONTRACTOR: BECK & BELLUCCI, INC.**  
**PROJECT: BRATTLEBORO, VERMONT**  
**IM 019-1(60)**

STATE OF VERMONT  
 BRUCE C. DALEY  
 NO. 87  
 LICENSED PROFESSIONAL ENGINEER

**W.E. DALEY INC.**  
 PRECAST CONCRETE PRODUCTS  
 1000 STATE ST. SUITE 100  
 BRATTLEBORO, VT 05701  
 TEL: 802-253-4422 FAX: 802-253-4427  
 WWW.WEDALEY.COM

I-91 BRATTLEBORO, VERMONT OVER MAPLE ST.  
 BEAM TYPE "A4-SB"  
 DIMENSIONAL DETAILS

SHEET NUMBER  
**9**