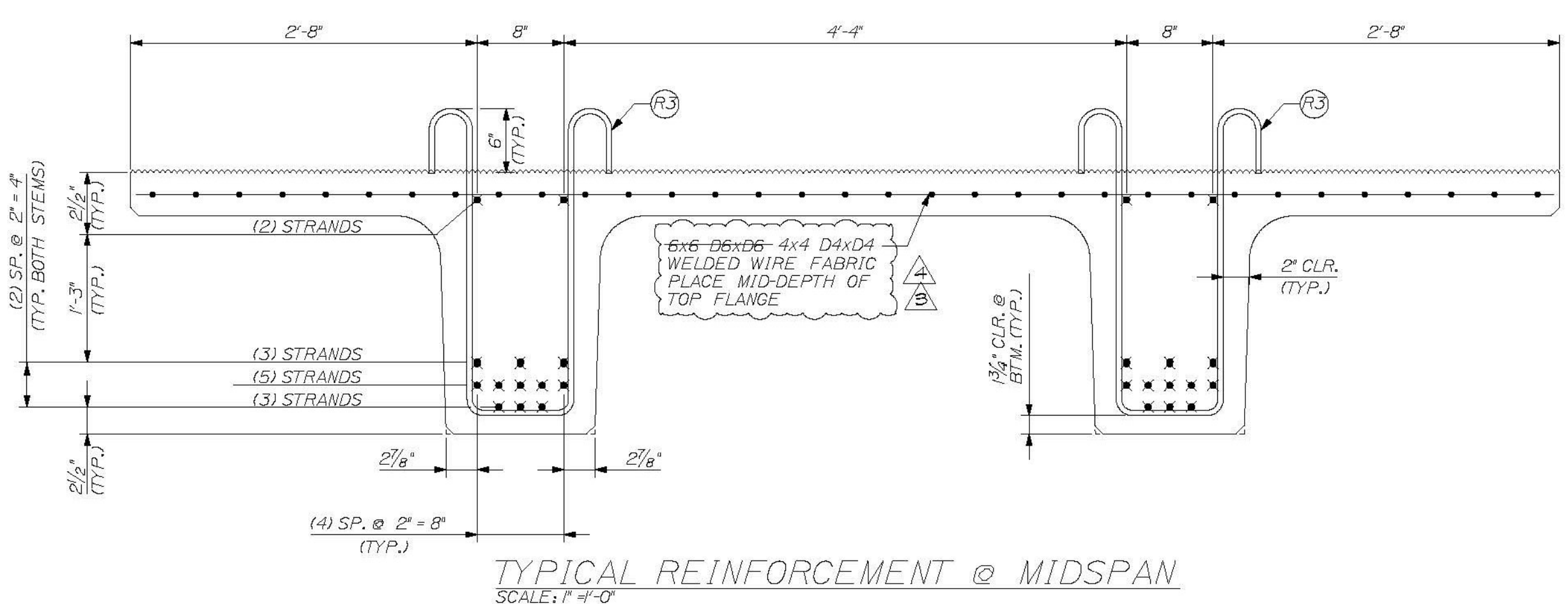
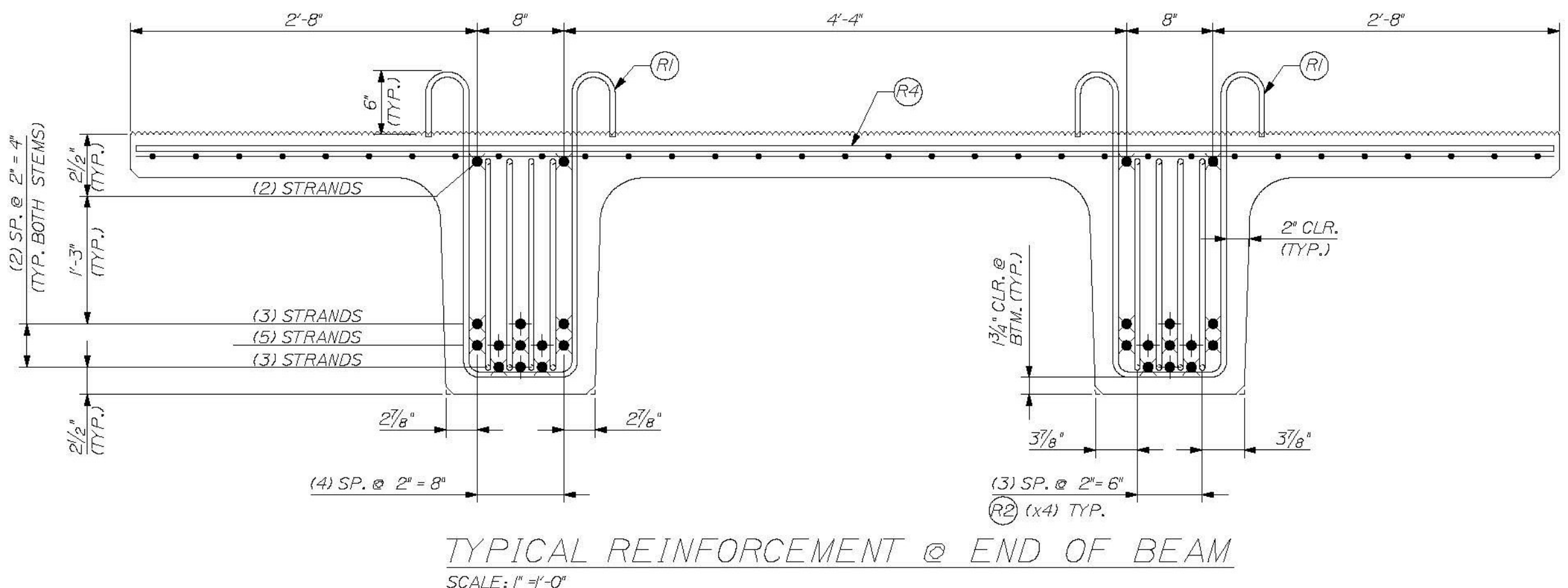
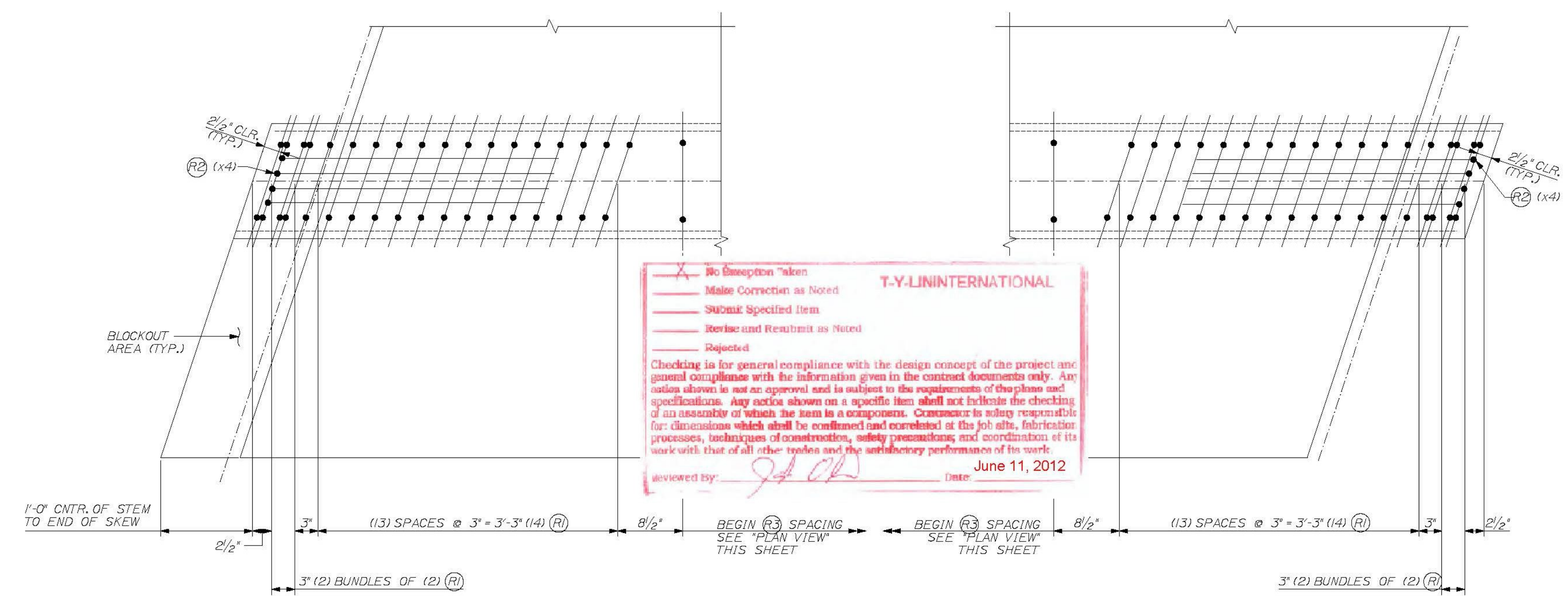


IF WWF NEEDS TO BE CUT TO PLACE OVER STIRRUPS USE PROCEDURE BELOW:  
 1. FOR CUT TRANSVERSE WIRE, SPLICE A #3 x 45" EPOXY COATED REBAR ORIENTED IN THE SAME DIRECTION OF THE CUT WIRE AND CENTERED.  
 2. FOR CUT LONGITUDINAL WIRE, SPLICE A #3 x 28" EPOXY COATED REBAR ORIENTED IN THE SAME DIRECTION OF THE CUT WIRE AND CENTERED.



**T.Y. LIN INTERNATIONAL**  
 No Description taken  
 Make Correction as Noted  
 Submit Specified Item  
 Revise and Resubmit as Noted  
 Rejected  
 Checking is for general compliance with the design concept of the project and general compliance with the information given in the contract documents only. Any action shown is not an approval and is subject to the requirements of the plans and specifications. Any action shown on a specific item shall not indicate the checking of its necessity or which the item is a component. Contractor is solely responsible for dimensions which shall be confirmed and correlated at the job site, fabrication processes, techniques of construction, safety precautions, and coordination of its work with that of all other trades and the satisfactory performance of its work.  
 Approved by: [Signature] Date: June 11, 2012

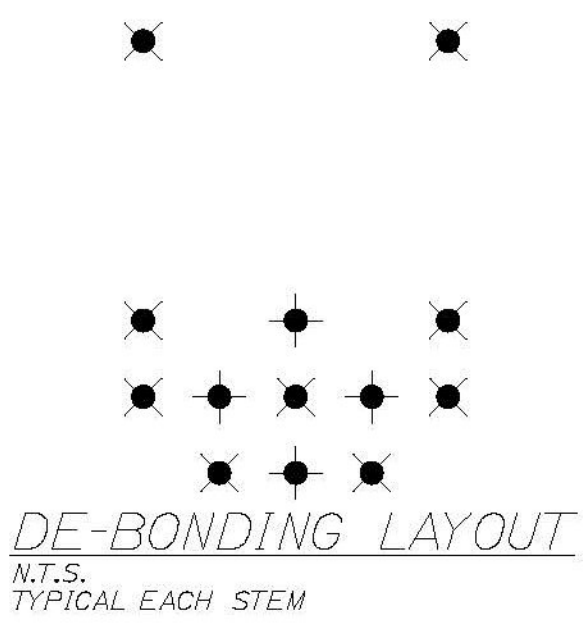
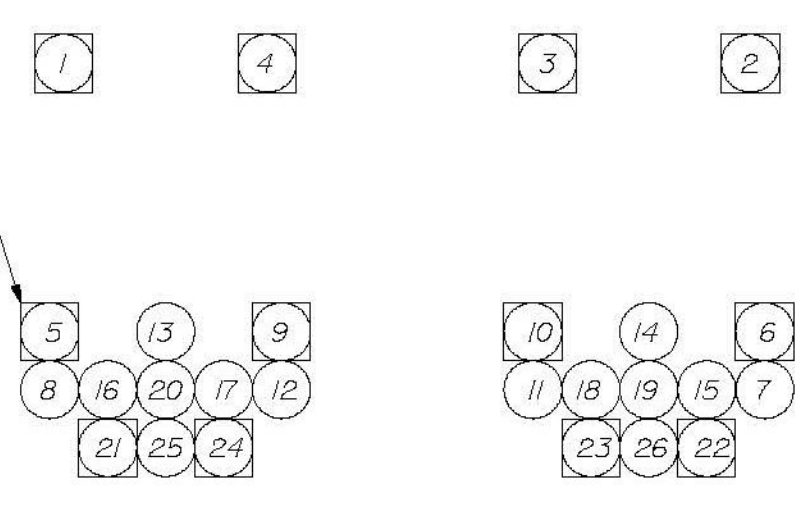
STRAND LEGEND

●	0.6" FULLY TENSIONED STRAND
○	0.6" FULLY TENSIONED STRAND (DEBOND 0.50 FEET)
⊗	0.6" FULLY TENSIONED STRAND (DEBOND 6 FEET)
⊕	0.6" FULLY TENSIONED STRAND (DEBOND 12 FEET)

REINFORCING CHART

ITEM	QTY.	TOTAL	SIZE	TYPE	LENGTH
R1	72	72	4	BENT	6'-10"
R2	16	16	4	BENT	8'-3 1/4"
R3	70	70	4	BENT	6'-9 1/2"
R4	16	16	4	STRT.	11'-3"
---	460 sf.	460 sf.		4x4 D4xD4 WELDED WIRE FABRIC	

\*EXTEND STRANDS 1, 4, 5, 9, 21 & 24 IN THE "LEFT" STEM AND STRANDS 2, 3, 6, 10, 22 & 23 IN THE "RIGHT" STEM BY A LENGTH OF 12" BEYOND THE END OF THE BEAM. BEND PER DETAILS NOTED ABOVE.  
 ALL OTHER STRANDS SHALL EXTEND 4" BEYOND THE END OF THE BEAM.  
 NOTES:  
 BENT BAR LENGTHS SHOWN REPRESENT BAR LENGTHS BEFORE BENDING.  
 TENSION LOAD = 43.94 KIPS/ STRAND  
 STRAND: 16 #4, 270 KSI, LOW RELAXATION, ASTM M203  
 REBAR: AASHTO M51, GRADE 60, EPOXY COATED  
 ALL TOLERANCES TO PCI STANDARDS  
 (1) "A3-SB" NEXT BEAM BEAM REQUIRED  
 SEE SHEET #7 FOR GEOMETRIC DETAILS  
 SEE SHEET #2 FOR BENT REBAR DETAILS



THE PROFESSIONAL ENGINEER'S STAMP  
 WERE PREPARED UNDER THE DIRECT  
 SUPERVISION OF A REGISTERED PROFESSIONAL  
 ENGINEER AND COMPLY WITH THE DESIGN AND  
 DETAILS SHOWN ON THE CONTRACT DRAWING  
 UNLESS REQUESTED OTHERWISE.  
 CONTRACTOR: BECK & BELLUCCI, INC.  
 PROJECT: BRATTLEBORO, VERMONT  
 IM 019-1(60)

STATE OF VERMONT  
 BRATTLEBORO, VT.  
 NO. 87  
 LICENSED PROFESSIONAL ENGINEER

W.E. DALEY, INC.  
 PRECAST CONCRETE PRODUCTS  
 1000 MAPLE ST. BRATTLEBORO, VT. 05701  
 TEL: 802-442-4718  
 FAX: 802-442-4719  
 DATE: MARCH 2011. PERFORMED IN INITIAL SUBMISSION.

I-91 BRATTLEBORO, VERMONT  
 OVER MAPLE ST.  
 BEAM TYPE "A3-SB"  
 REINFORCEMENT DETAILS

SHEET NUMBER  
 8