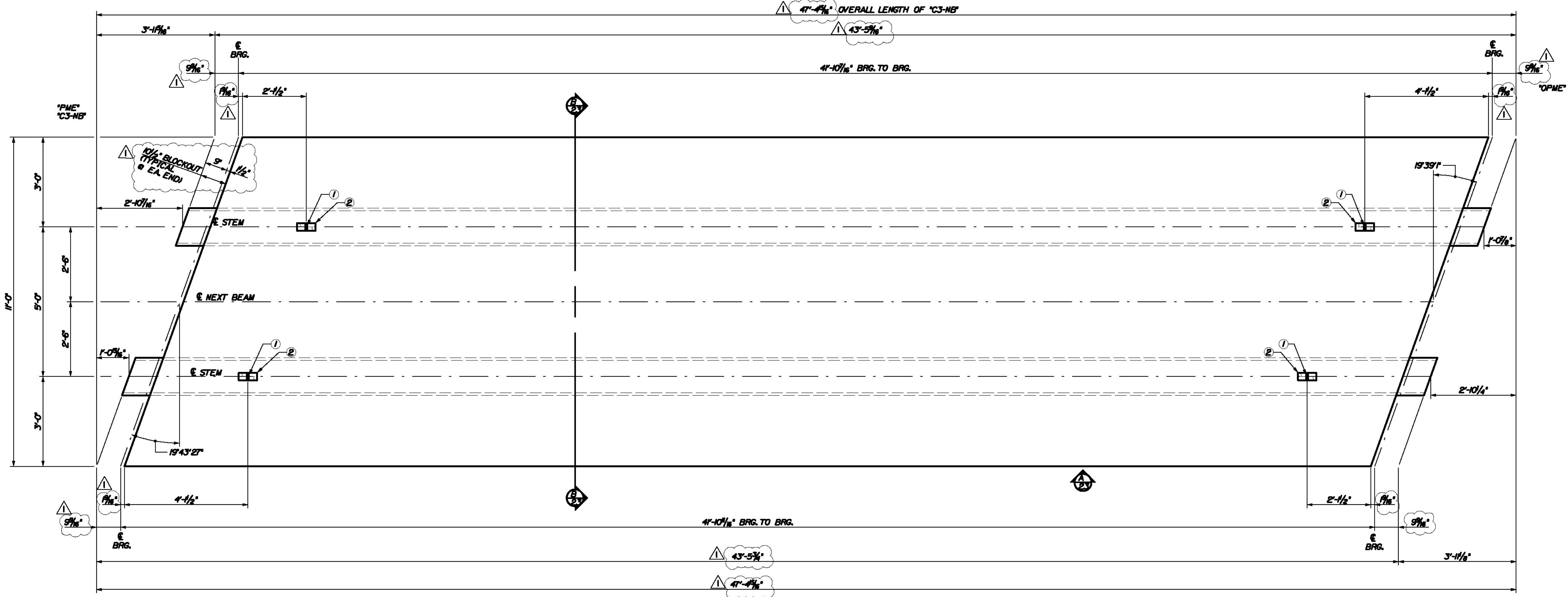


Date: 7/20/2011

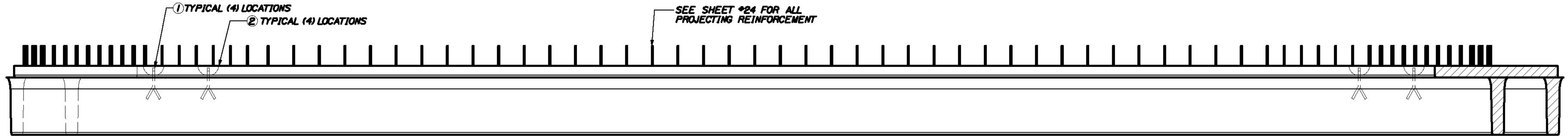
Username: common

Filename: ... \023\_Beam\_C3-NB\_dimension.dwg Structures Division

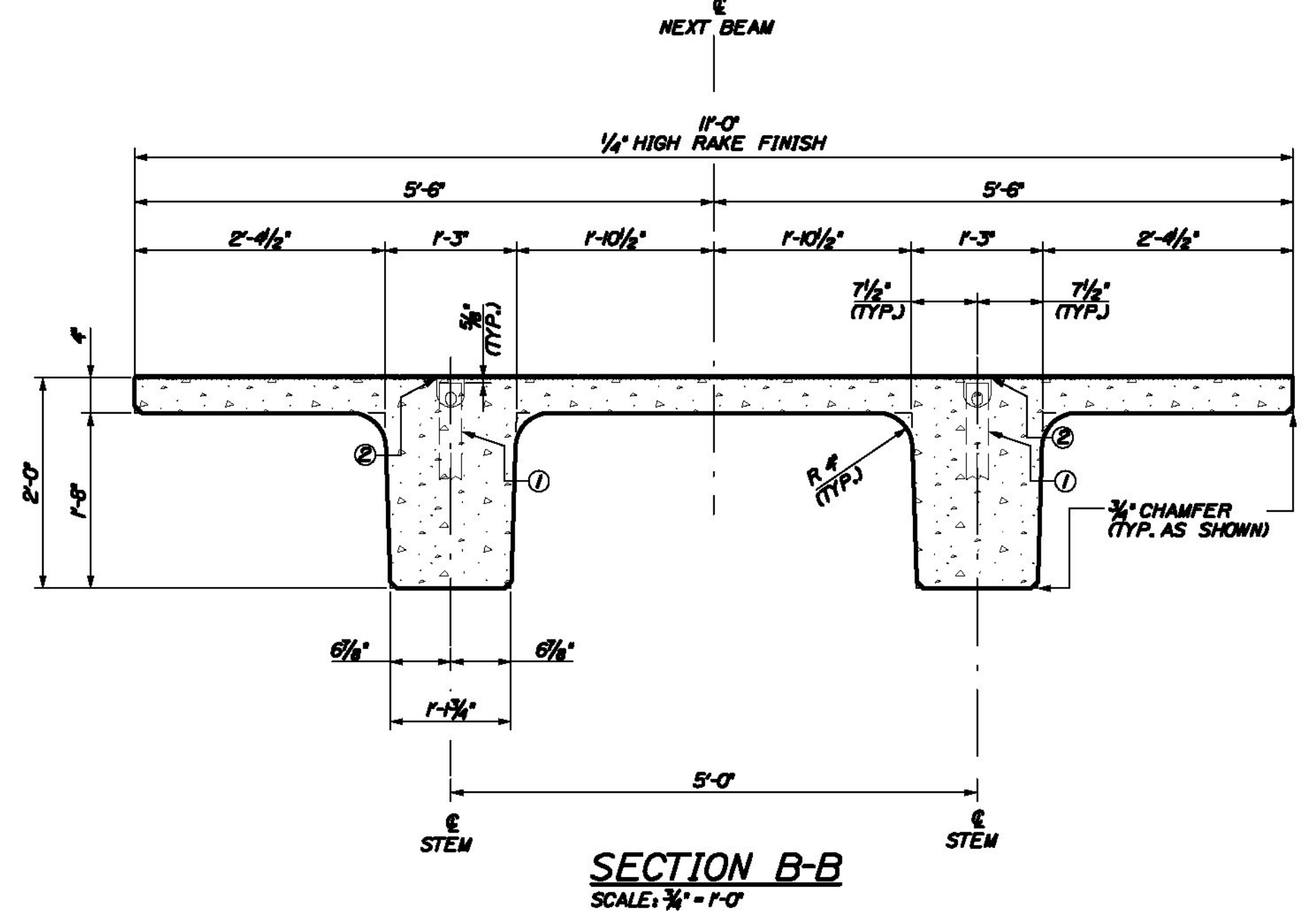
\*PME - PIECE MARK END  
\*OPME - OPPOSITE PIECE MARK END



PLAN VIEW ~ BEAM 'C3-NB'  
SCALE: 1/2" = 1'-0"



VIEW A ~ TYPICAL BOTH SIDES  
SCALE: 1/2" = 1'-0"



SECTION B-B  
SCALE: 3/4" = 1'-0"

DESIGN NOTES:

CONCRETE  $f'_c$  @ TRANSFER = 6000 PSI  
 $f'_c$  @ FINAL = 8000 PSI  
 CAMBER @ DESTRESS = 3/4" IN.  
 CAMBER @ ERECTION = 1/8" IN.  
 FINISH - TOPS OF BEAMS TO RECEIVE RAKE FINISH W/ 1/4" AMPLITUDE  
 PATCH RECESS VOIDS FLUSH WITH SURFACE WITH CEMENT MORTAR  
 ALL TOLERANCES TO PCI STANDARDS

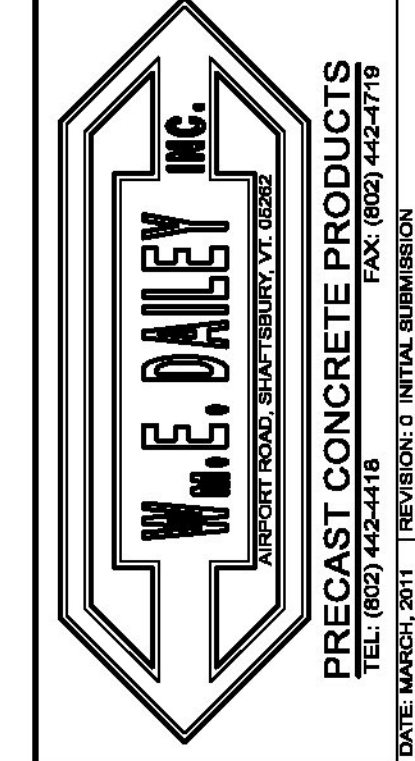
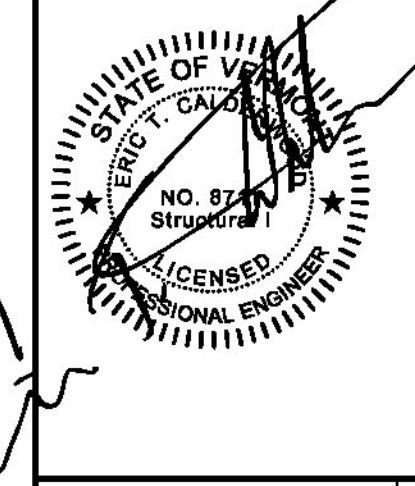
(1) 'C3-NB' DECK BEAMS REQUIRED  
 SEE SHEET #24 FOR REINFORCING

DUE TO INHERENT VARIABLES, CAMBERS ARE PROVIDED ONLY AS A MEANS OF QUANTIFYING THE CONSISTENCY OF PRODUCTION AND QUALITY CONTROL AND SHOULD NEVER BE CONSIDERED ANY BETTER THAN ESTIMATES.

PRODUCT WEIGHT	
PRODUCT	WEIGHT
'C3-NB'	24.05 TONS

BILL OF MATERIALS				
REMARKS	#	QTY	TOTAL	DESCRIPTION
SEE SHEET #2	1	4	4	RL-23 SPREAD ANCHOR, 8 TON, (11' LONG), PART# MB7919
	2	4	4	RL-45 REUSABLE RECESS MEMBER, 8TON, PART# MB7921
	4	1	1	12 C.Y. CONCRETE MIX

THE PROFESSIONAL ENGINEER'S STAMPS AND SEALS WERE PREPARED UNDER THE DIRECT SUPERVISION OF A REGISTERED PROFESSIONAL ENGINEER AND COMPLY WITH THE CONTRACT AND DETAILS SHOWN ON THE CONTRACT DRAWING UNLESS REQUESTED OTHERWISE.  
 CONTRACTOR: BECK & BELLUCCI, INC.  
 PROJECT: BRATTLEBORO, VERMONT  
 IM 019-1(60)



I-91 BRATTLEBORO, VERMONT  
 OVER MAPLE ST.  
 BEAM TYPE "C3-NB"  
 DIMENSIONAL DETAILS

SHEET NUMBER  
 23