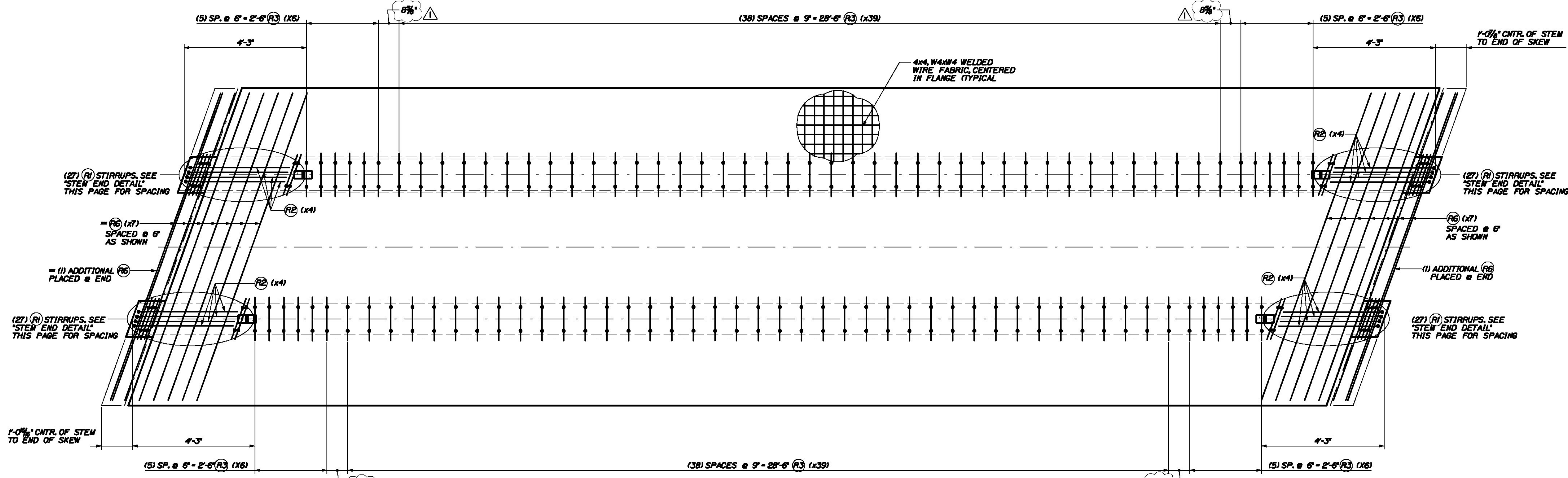


Date: 7/20/2011

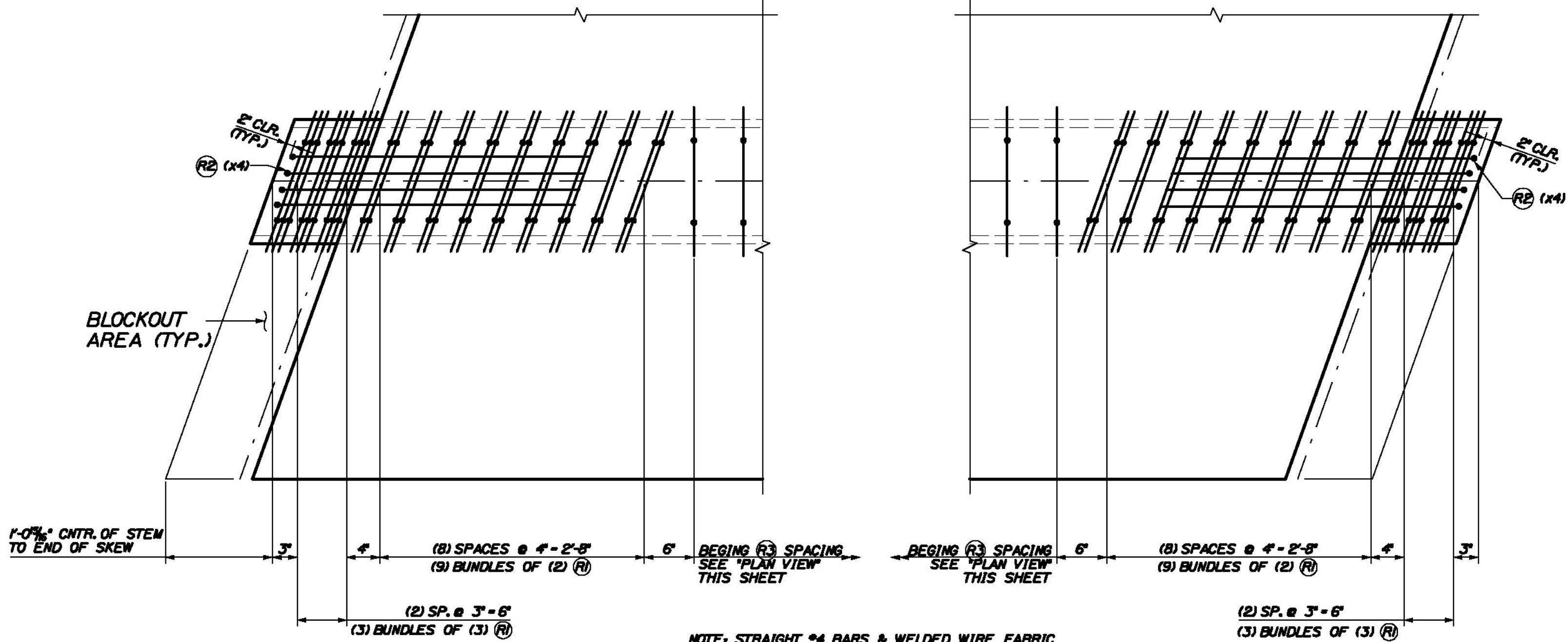
Username: common

Filename: ... \020\_Beam\_C1-NB\_Reinf\020.dwg Structures Division



**REINFORCEMENT PLAN VIEW ~ BEAM "C1-NB"**  
SCALE: 1/2" = 1'-0"

MAINTAIN 2" MIN. CLEARANCE FROM ENDS OF BEAM.  
SEE REINFORCEMENT SECTION & END VIEWS (THIS SHEET) FOR ALL DIMENSIONS AND DETAILS NOT SHOWN HERE.  
= FLANGE REINFORCEMENT IN AREA OF FLANGE BLOCK-OUT TO BE PLACED DURING CONSTRUCTION (TYPICAL @ EACH END OF BEAM)

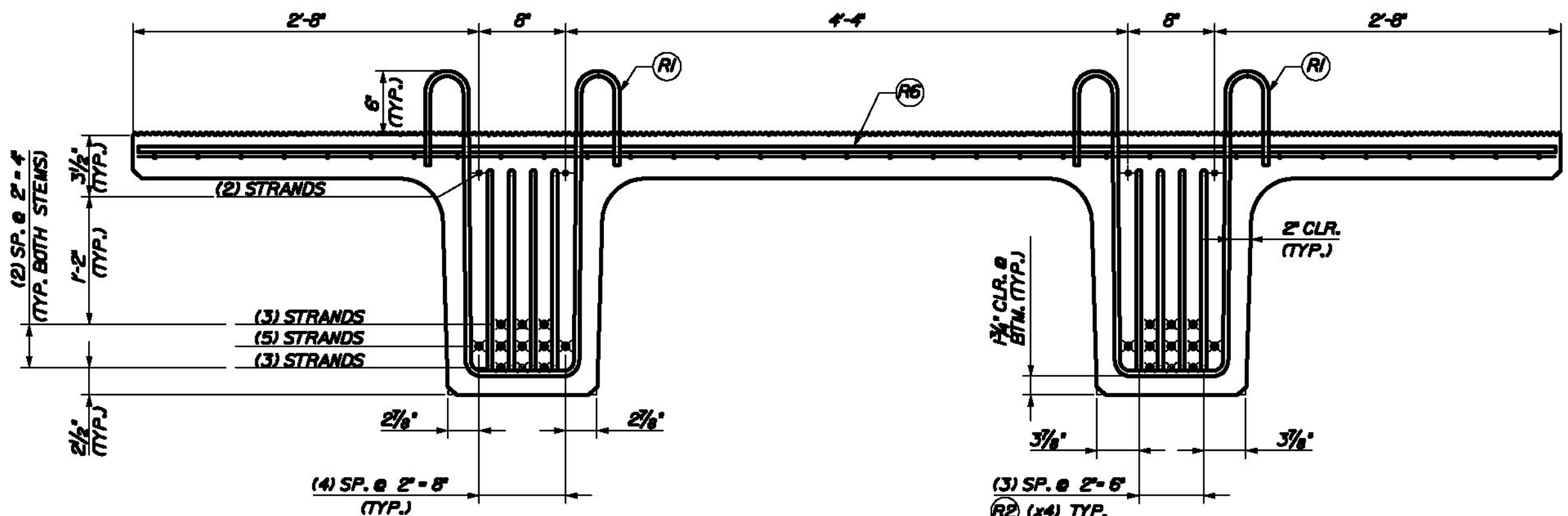


**STEM END DETAIL**  
SCALE: 1" = 1'-0"

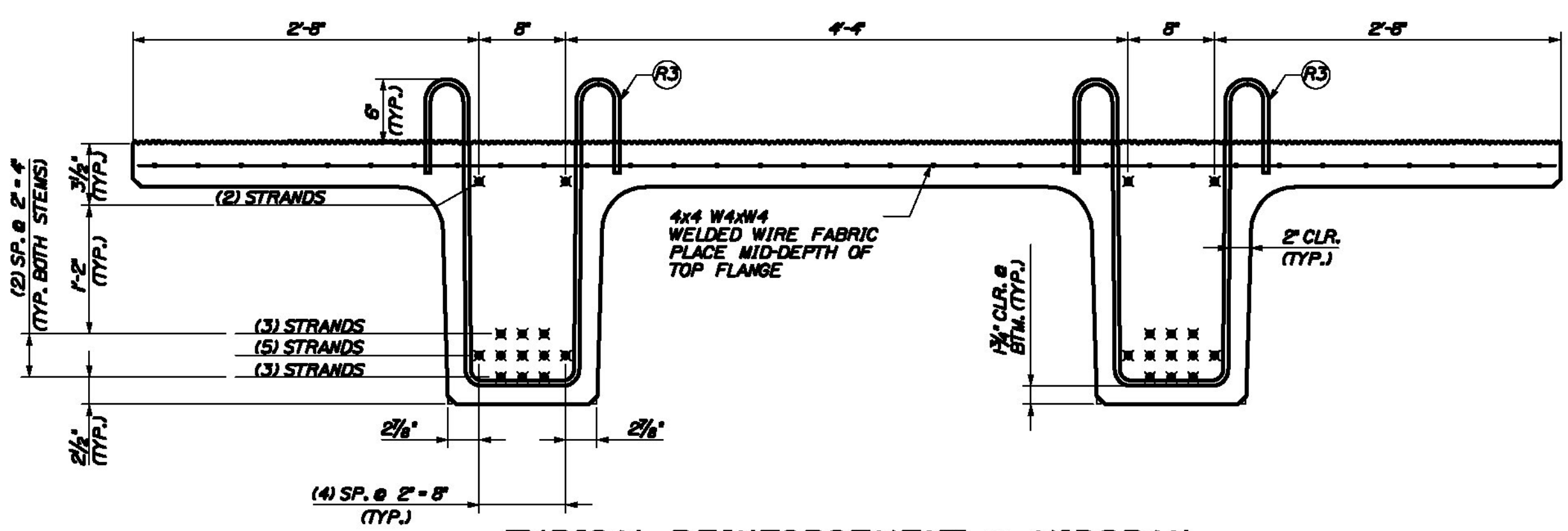
NOTE: STRAIGHT #4 BARS & WELDED WIRE FABRIC NOT SHOWN FOR CLARITY, SEE PLAN VIEW THIS SHEET.

Add notes or diagrams that show required strand projections as shown in the design drawings on sheet 406, note 1

STRAND LEGEND	
	0.6" FULLY TENSIONED STRAND
	0.6" FULLY TENSIONED STRAND (DEBOUND 0.50 FEET)
	0.6" FULLY TENSIONED STRAND (DEBOUND 5.75 FEET)
	0.6" FULLY TENSIONED STRAND (DEBOUND 8.75 FEET)



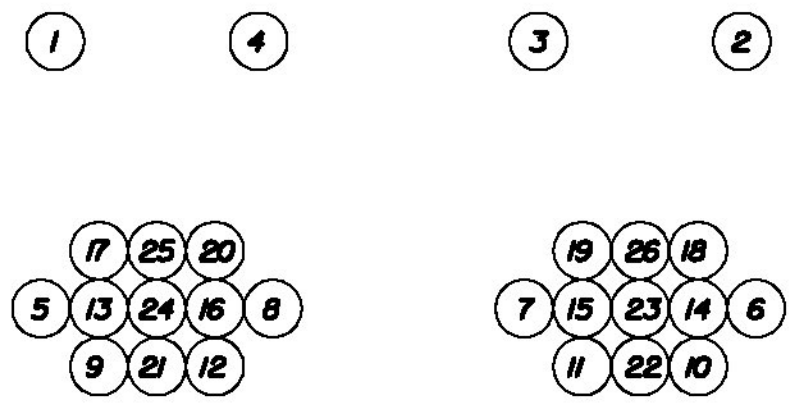
**TYPICAL REINFORCEMENT @ END OF BEAM**  
SCALE: 1/4" = 1'-0"



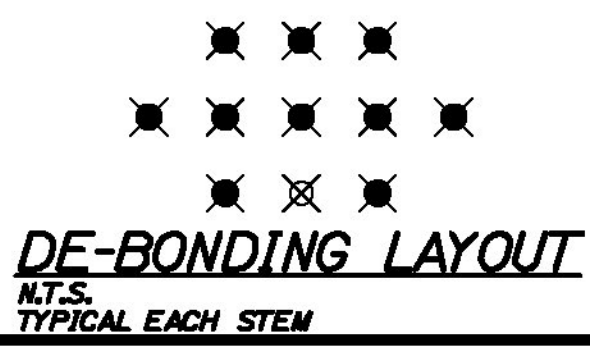
**TYPICAL REINFORCEMENT @ MIDSPAN**  
SCALE: 1/4" = 1'-0"

REINFORCING CHART					
ITEM	QTY.	TOTAL	SIZE	TYPE	LENGTH
R1	108	108	4	BENT	8'-0"
R2	16	16	4	BENT	8'-5 1/4"
R3	102	102	4	BENT	8'-7 1/2"
R6	16	16	4	STRT.	17'-4"
—	460 sf.	460 sf.	4x4	WELDED WIRE FABRIC	
BAR SIZE		WT./BEAM	TOTAL WT.		
4		1210	1210		
WWF		390	390		

**NOTES:**  
BENT BAR LENGTHS SHOWN REPRESENT BAR LENGTHS BEFORE BENDING.  
TENSION LOAD = 43.94 KIPS/ STRAND STRAND: 5 # 270 KSI LOW RELAXATION ASTM A643 REBAR; AASHTO M31, GRADE 60, EPOXY COATED ALL TOLERANCES TO PCI STANDARDS  
(1) "C1-NB" NEXT BEAM BEAM REQUIRED  
SEE SHEET #19 FOR GEOMETRIC DETAILS  
SEE SHEET #2 FOR BENT REBAR DETAILS

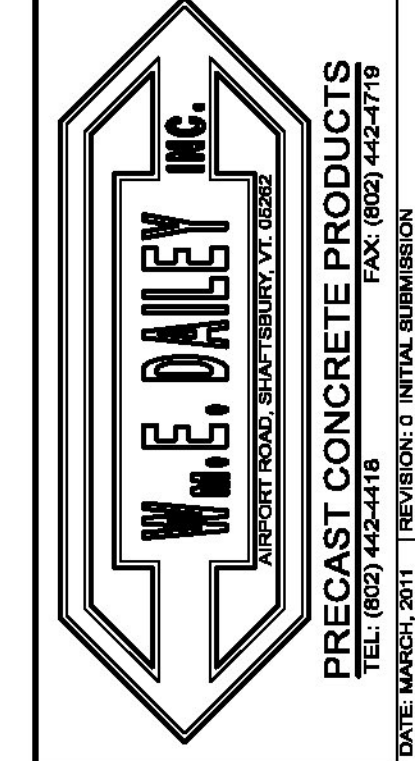
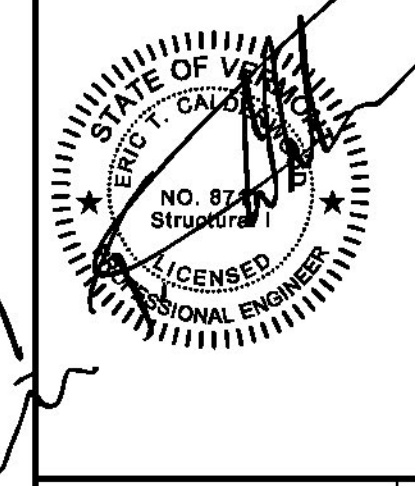


**DE-TENSION SEQUENCE**  
N.T.S.



**DE-BONDING LAYOUT**  
N.T.S. TYPICAL EACH STEM

THE PROFESSIONAL ENGINEER'S STAMP WAS PREPARED UNDER THE DIRECT SUPERVISION OF A REGISTERED PROFESSIONAL ENGINEER AND COMPLY WITH THE DESIGN AND DETAILS SHOWN ON THE CONTRACT DRAWING UNLESS REQUESTED OTHERWISE.  
CONTRACTOR: BECK & BELLUCCI, INC.  
PROJECT: BRATTLEBORO, VERMONT  
IM 019-1(60)



I-91 BRATTLEBORO, VERMONT  
OVER MAPLE ST.  
BEAM TYPE "C1-NB"  
REINFORCEMENT DETAILS

SHEET NUMBER  
**20**