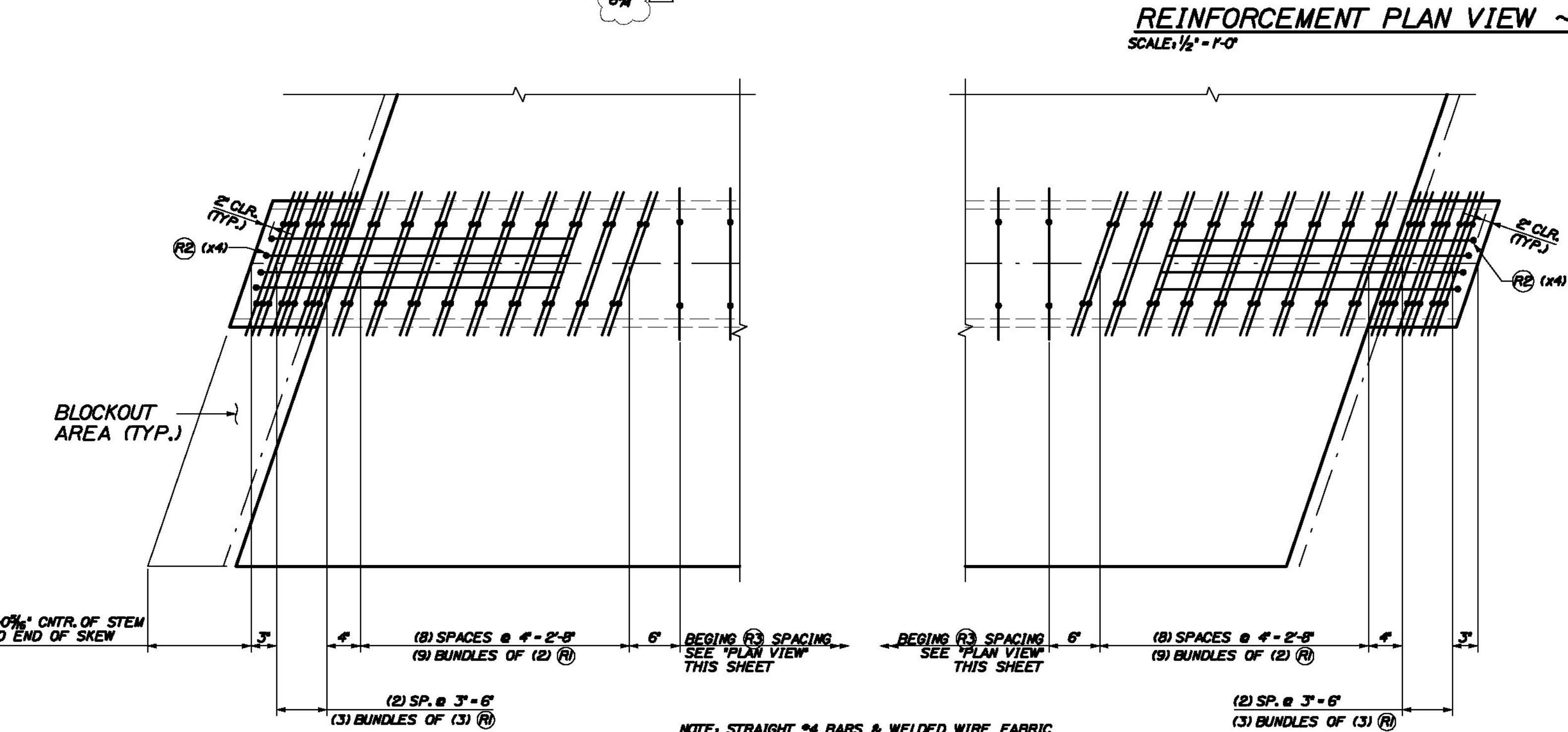
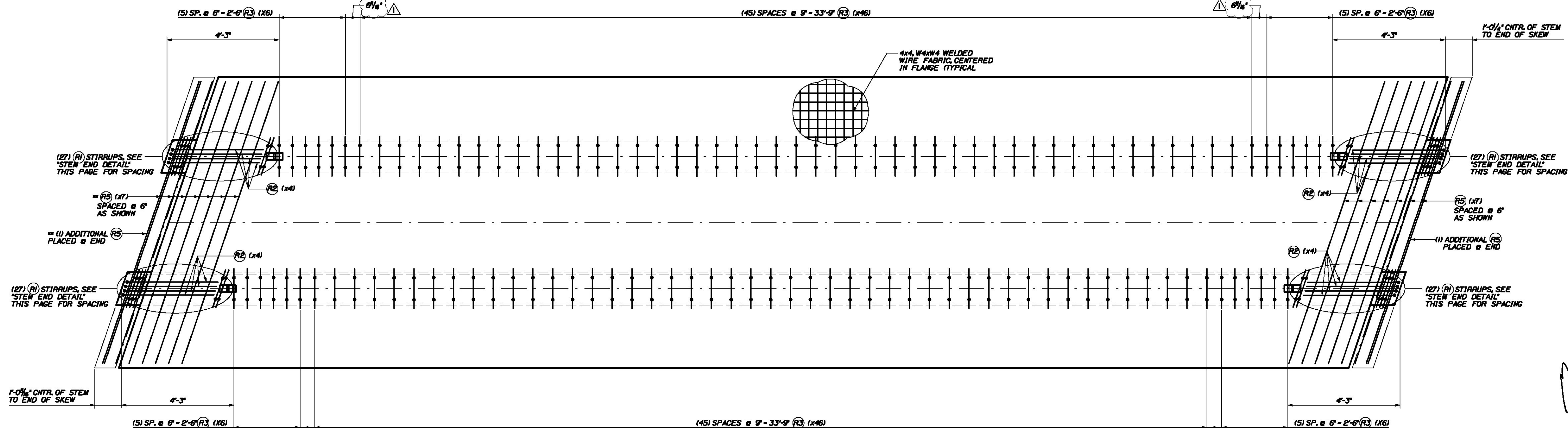


Date: 7/20/2011

Username: common

Filename: ... \012\_Beam\_B1-NB\_Reinforcement.dwg Structures Division



REINFORCING CHART					
ITEM	QTY.	TOTAL	SIZE	TYPE	LENGTH
R1	108	108	4	BENT	8'-0"
R2	16	16	4	BENT	8'-5 1/4"
R3	116	116	4	BENT	8'-7 1/2"
R5	16	16	4	STRT.	11'-3 1/4"
-	515 sf.	515 sf.		4x4 W4xW4 WELDED WIRE FABRIC	
BAR SIZE		WT./BEAM	TOTAL WT.		
4		1275	1275		
WWF		440	440		

NOTES:

BENT BAR LENGTHS SHOWN REPRESENT BAR LENGTHS BEFORE BENDING.

TENSION LOAD = 43.94 KIPS/ STRAND

STRAND: 5 # 270 KSI LOW RELAXATION ASTM A643 REBAR; AASHTO M31, GRADE 60, EPOXY COATED

ALL TOLERANCES TO PCI STANDARDS

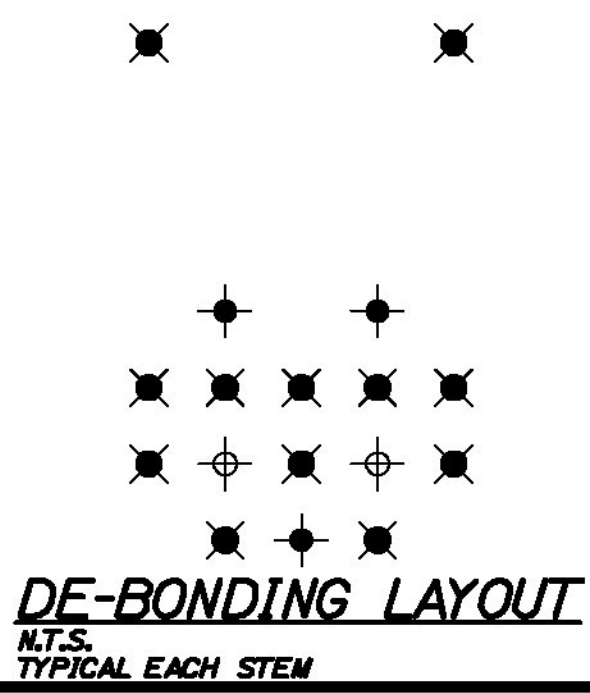
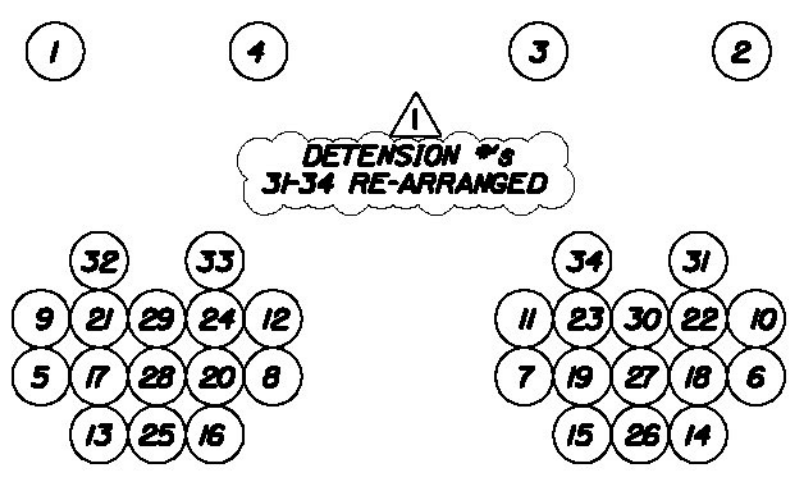
(1) "B1-NB" NEXT BEAM BEAM REQUIRED

SEE SHEET #11 FOR GEOMETRIC DETAILS

SEE SHEET #2 FOR BENT REBAR DETAILS

Add notes or diagrams that show required strand projections as shown in the design drawings on sheet 406, note 1

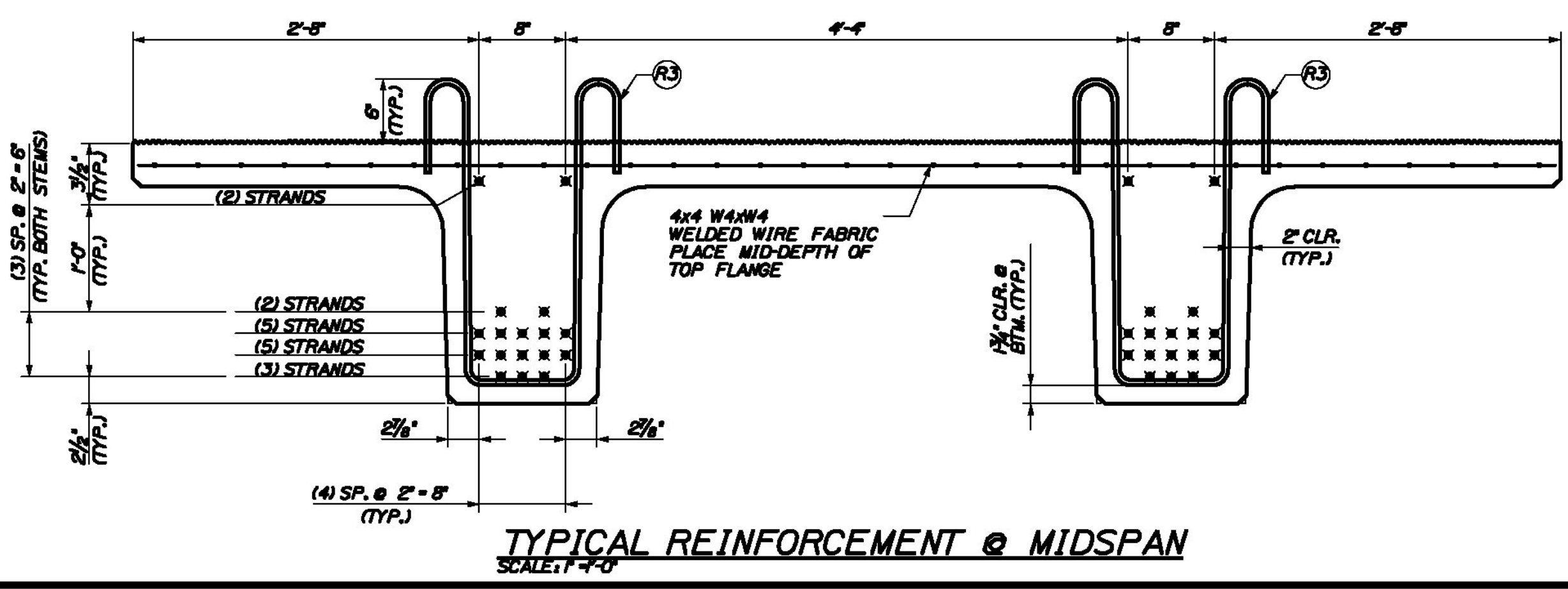
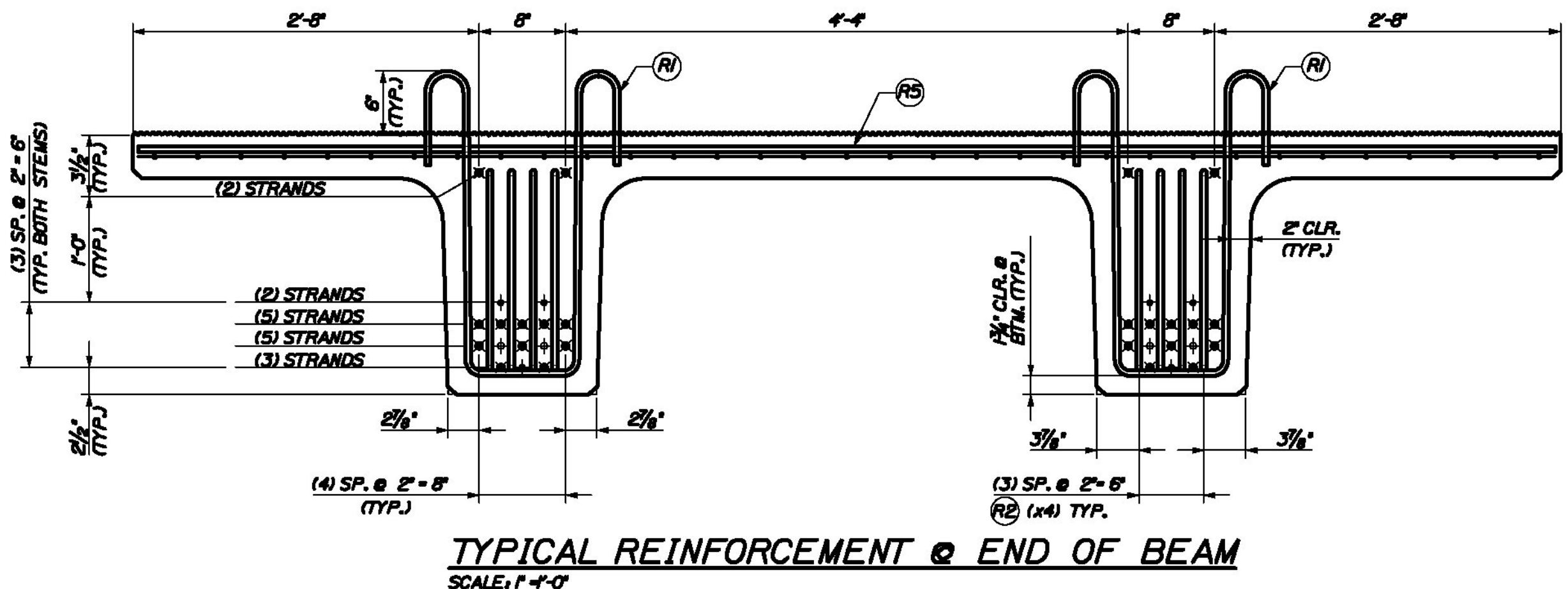
STRAND LEGEND	
	0.6" FULLY TENSIONED STRAND
	0.6" FULLY TENSIONED STRAND (DEBOUND 0.50 FEET)
	0.6" FULLY TENSIONED STRAND (DEBOUND 5.75 FEET)
	0.6" FULLY TENSIONED STRAND (DEBOUND 8.75 FEET)



MAINTAIN 2" MIN. CLEARANCE FROM ENDS OF BEAM.

SEE REINFORCEMENT SECTION & END VIEWS (THIS SHEET) FOR ALL DIMENSIONS AND DETAILS NOT SHOWN HERE.

FLANGE REINFORCEMENT IN AREA OF FLANGE BLOCK-OUT TO BE PLACED DURING CONSTRUCTION (TYPICAL @ EACH END OF BEAM)



THE PROFESSIONAL ENGINEER'S STAMPS AND SEALS WERE PREPARED UNDER THE DIRECT SUPERVISION OF A REGISTERED PROFESSIONAL ENGINEER AND COMPLY WITH THE DESIGN AND DETAILS SHOWN ON THE CONTRACT DRAWING UNLESS REQUESTED OTHERWISE.

CONTRACTOR: BECK & BELLUCCI, INC.

PROJECT: BRATTLEBORO, VERMONT  
IM 019-1(50)

STATE OF VERMONT  
NO. 87  
LICENSED PROFESSIONAL ENGINEER

W. E. DALEY, INC.  
PRECAST CONCRETE PRODUCTS  
TEL: 802-254-4411 FAX: 802-254-4470  
ROUTE 100, WASHINGTON, VERMONT 05676

I-91 BRATTLEBORO, VERMONT  
OVER MAPLE ST.

BEAM TYPE "B1-NB"  
REINFORCEMENT DETAILS

SHEET NUMBER  
12