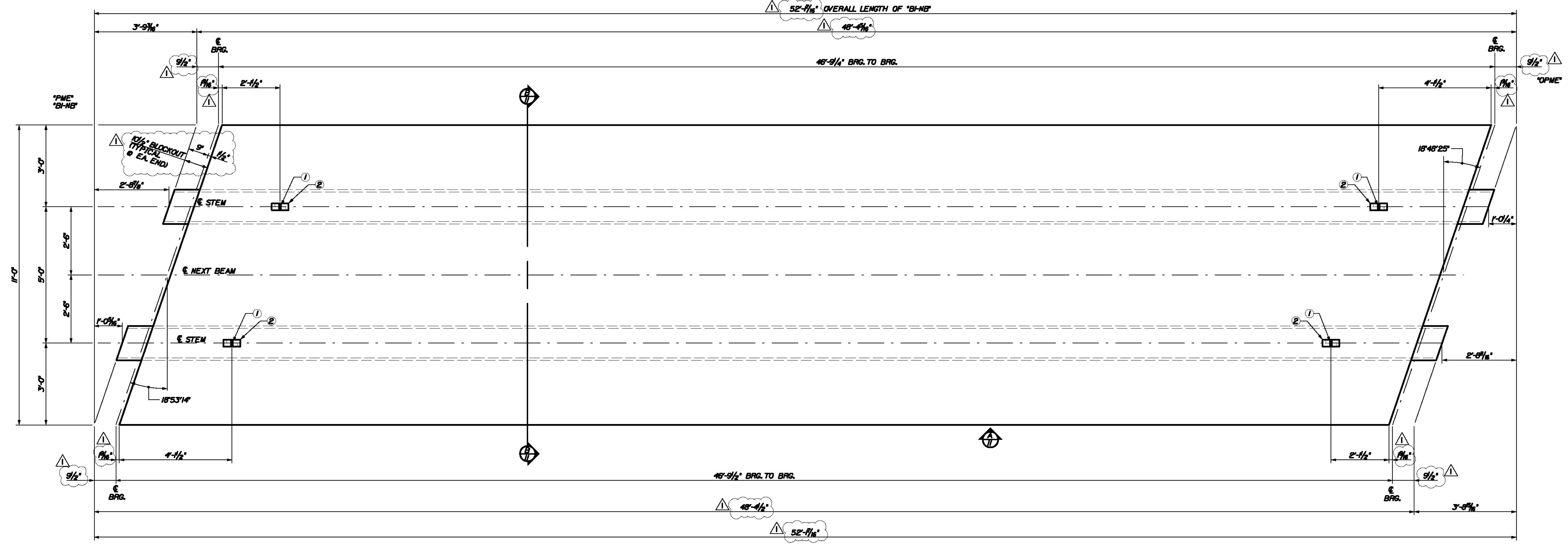


Date: 7/20/2011

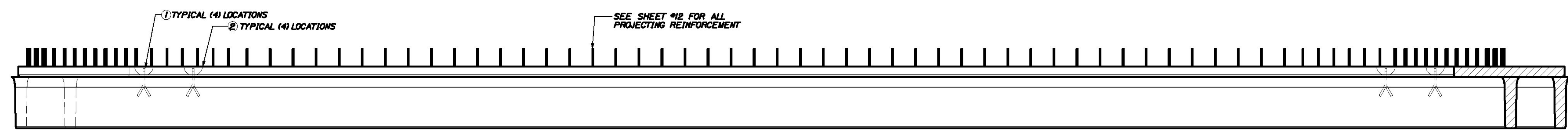
Username: common

Filename: ... \011_Beam_B1-NB_dimensions.dwg Structures Division

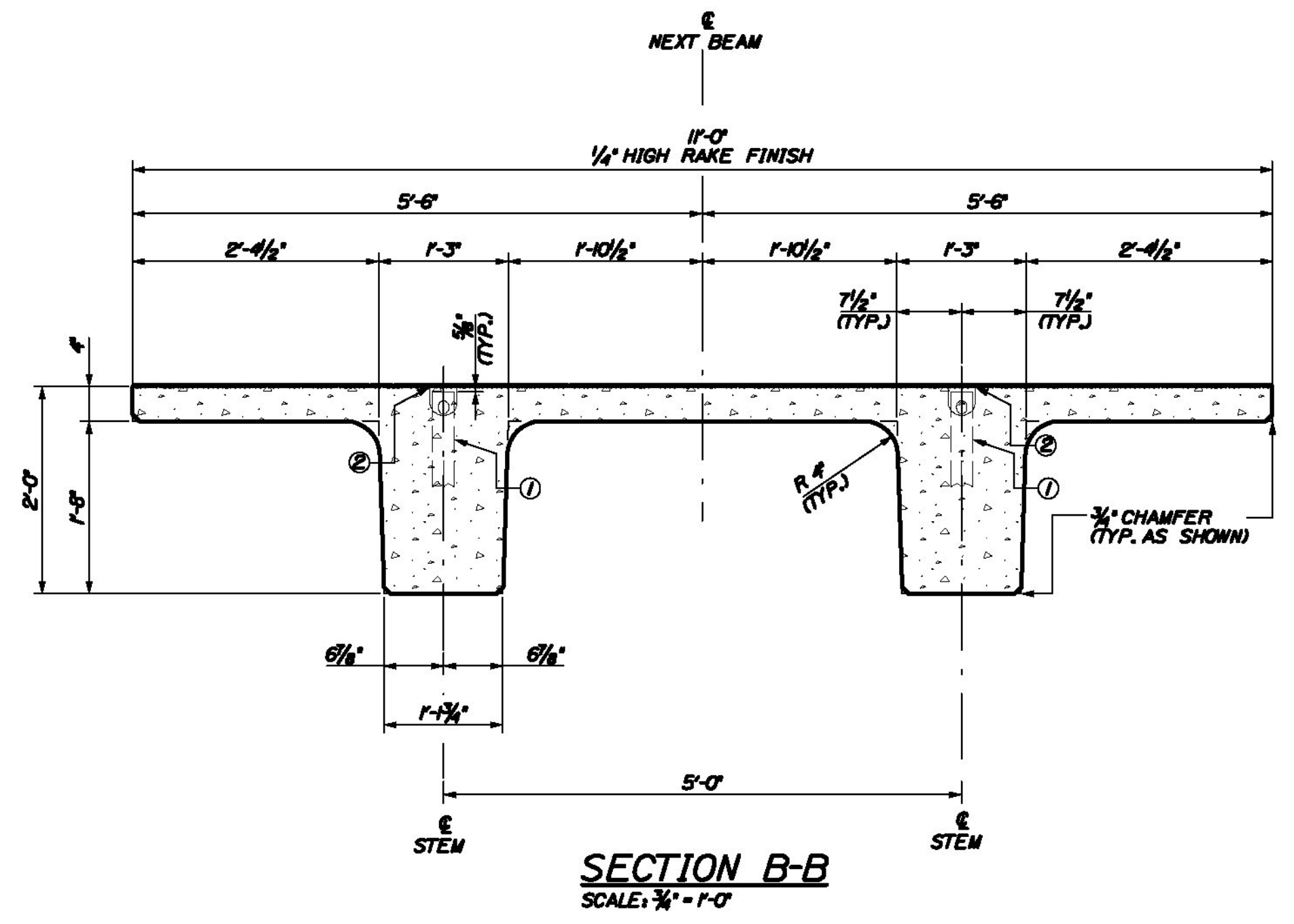
*PME = PIECE MARK END
*OPME = OPPOSITE PIECE MARK END



PLAN VIEW ~ BEAM "B1-NB"
SCALE: 1/2" = 1'-0"



VIEW A ~ TYPICAL BOTH SIDES
SCALE: 1/2" = 1'-0"



SECTION B-B
SCALE: 3/4" = 1'-0"

DESIGN NOTES:

CONCRETE f'_c @ TRANSFER = 6200 PSI
 f'_c @ FINAL = 8000 PSI
 CAMBER @ DESTRESS = 1 1/16 in.
 CAMBER @ ERECTION = 2/16 in.
 FINISH - TOPS OF BEAMS TO RECEIVE RAKE FINISH W/ 1/4" AMPLITUDE
 PATCH RECESS VOIDS FLUSH WITH SURFACE WITH CEMENT MORTAR
 ALL TOLERANCES TO PCI STANDARDS

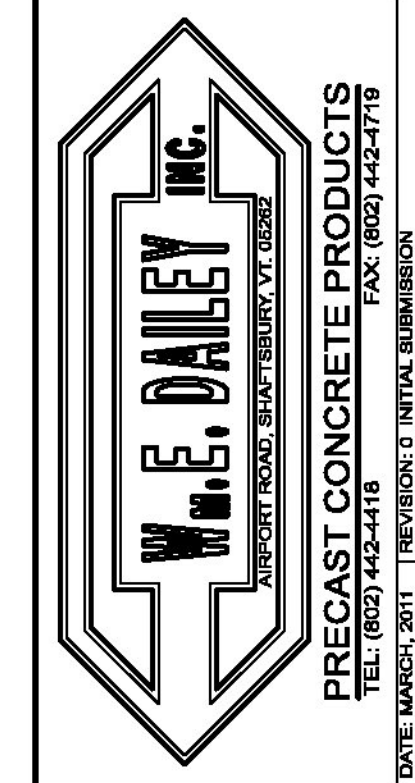
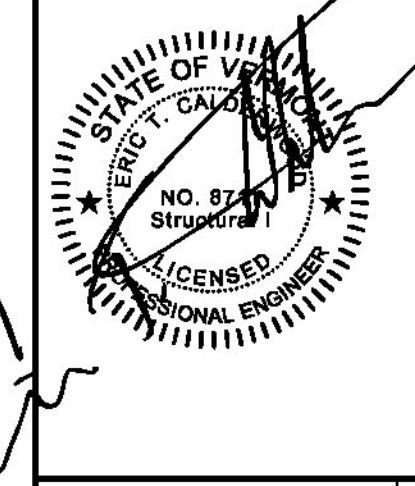
(1) "B1-NB" DECK BEAMS REQUIRED
 SEE SHEET #12 FOR REINFORCING

DUE TO INHERENT VARIABLES, CAMBERS ARE PROVIDED ONLY AS A MEANS OF QUANTIFYING THE CONSISTENCY OF PRODUCTION AND QUALITY CONTROL AND SHOULD NEVER BE CONSIDERED ANY BETTER THAN ESTIMATES.

PRODUCT WEIGHT	
PRODUCT	WEIGHT
"B1-NB"	27.1 TONS

BILL OF MATERIALS				
REMARKS	#	QTY	TOTAL	DESCRIPTION
SEE SHEET #2	1	4	4	RL-23 SPREAD ANCHOR, 8 TON, (11' LONG), PART# MB7919
	2	4	4	RL-45 REUSABLE RECESS MEMBER, 8TON, PART# MB7921
	3	1	1	13.5 C.Y. CONCRETE MIX

THE PROFESSIONAL ENGINEER'S STAMPS AND SEALS WERE PREPARED UNDER THE DIRECT SUPERVISION OF A REGISTERED PROFESSIONAL ENGINEER AND COMPLY WITH THE CONTRACT AND DETAILS SHOWN ON THE CONTRACT DRAWING UNLESS REQUESTED OTHERWISE.
 CONTRACTOR: BECK & BELLUCCI, INC.
 PROJECT: BRATTLEBORO, VERMONT
 IM 019-1(50)



I-91 BRATTLEBORO, VERMONT
 OVER MAPLE ST.

BEAM TYPE "B1-NB"
 DIMENSIONAL DETAILS

SHEET NUMBER
 11