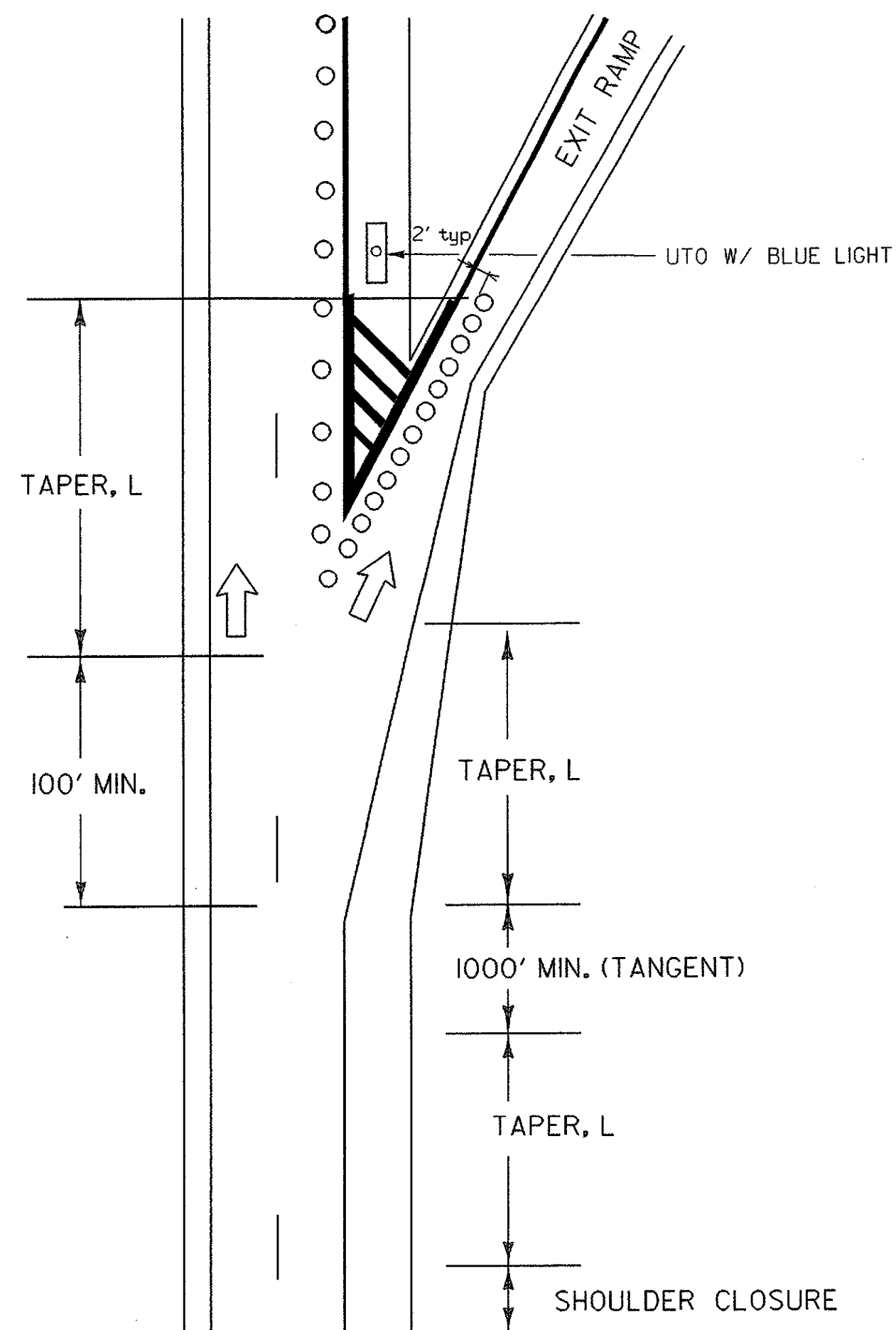


RAMP AND GORE TRAFFIC CONTROL PLAN

MAINLINE LANE CLOSURE AT AN EXIT RAMP

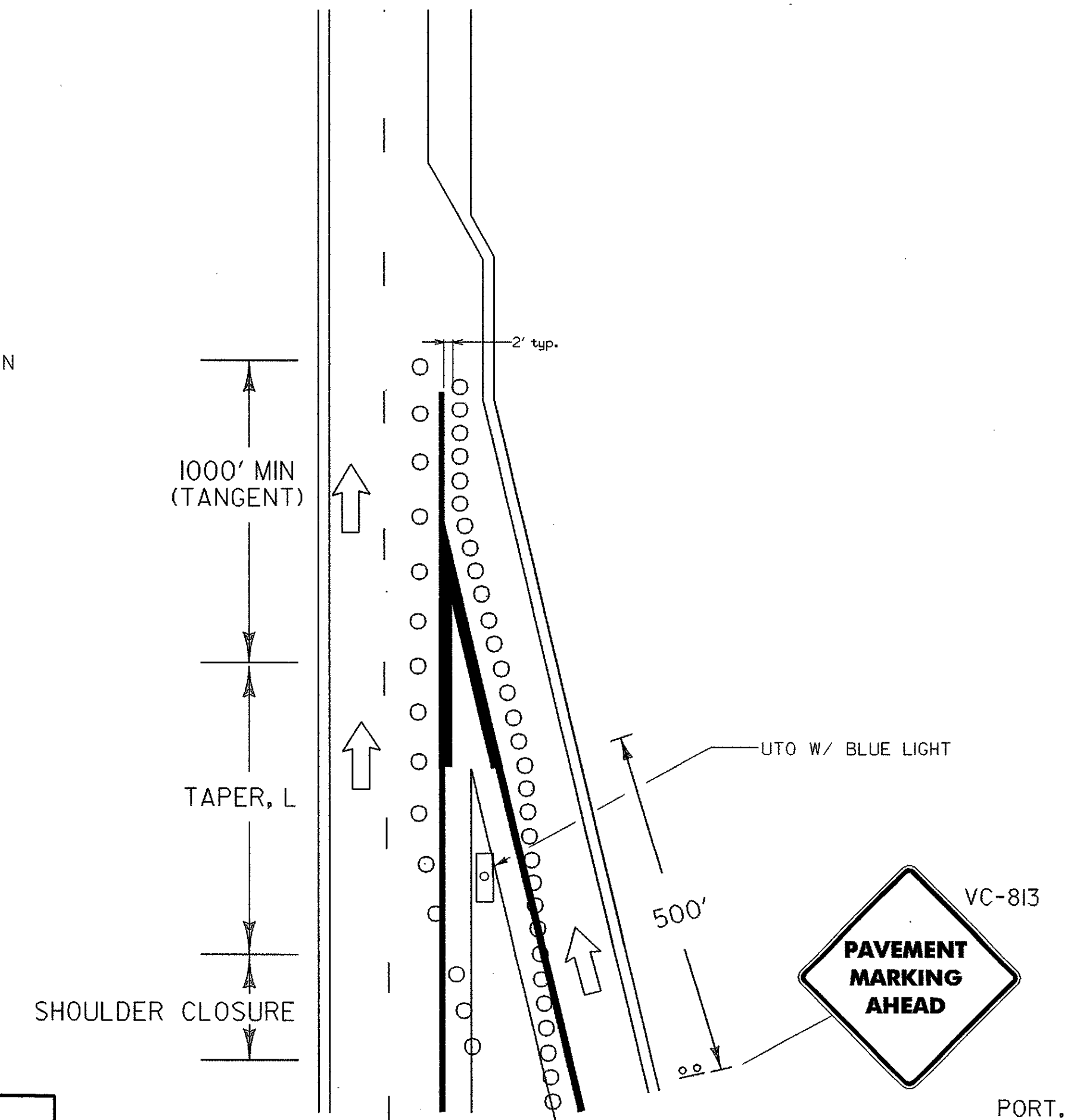
THIS DETAIL SHALL BE USED WHEN THE WORK ZONE BEGINS AT THE GORE OR THE MAINLINE LANE CLOSURE DRUM PLACEMENT INTERFERES WITH THE EXIT RAMP.



MAINLINE LANE CLOSURE AT AN ENTRANCE RAMP

THIS DETAIL SHALL BE USED WHEN THE WORK ZONE BEGINS AT THE END OF THE ACCELERATION LANE OR THE MAINLINE LANE CLOSURE DRUM PLACEMENT INTERFERES WITH THE ON-RAMP TRAFFIC.

IF THE LENGTH OF THE ACCELERATION LANE IS NOT ADEQUATE, THE YIELD SIGN SHALL BE REPLACED WITH A STOP SIGN. IF A STOP SIGN IS USED, IT SHOULD BE ACCOMPANIED BY A STOP BAR.

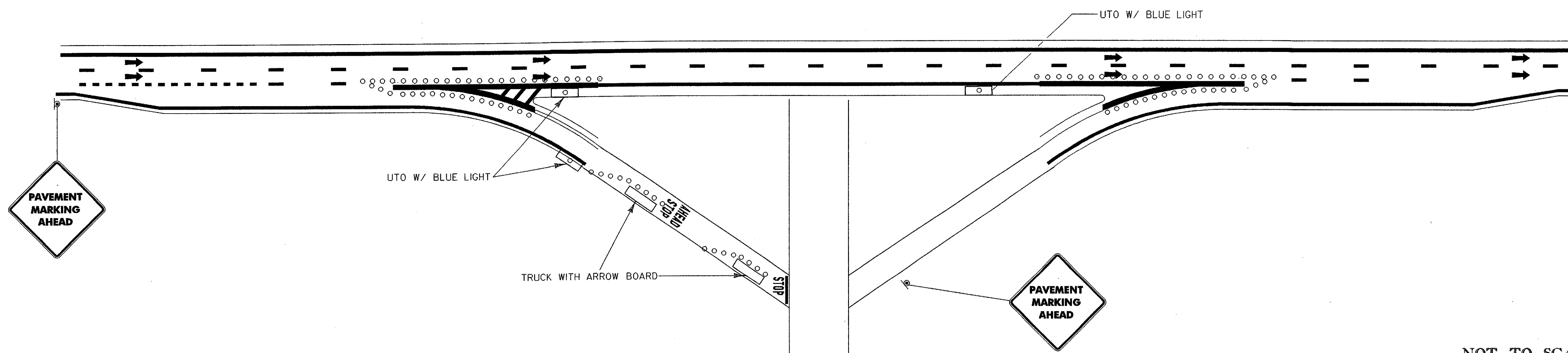


NOTES:

1. ALL SIGNS SHALL BE PORTABLE.
2. CHANNELIZING DEVICES SHALL BE PLACED AS FOLLOWS:
TAPERS - DEVICES SHALL BE SPACED A MAXIMUM OF 'S' (THE SPEED LIMIT IN FEET) APART.
TANGENT - DEVICES SHALL BE PLACED 2 X 'S' (THE SPEED LIMIT IN FEET) APART.
3. ALL DISTANCES ARE DESIRABLE MINIMUMS, FIELD CONDITIONS SHALL CONTROL THE ACTUAL PLACEMENT.
4. TAPER RATES ARE BASED ON THE POSTED MAINLINE AND EXIT SPEEDS.
5. LANE CLOSURES AND TAPER LENGTHS, L, AS DETAILED ON STANDARD E-103.
6. ALL SIGNING AND DELINEATION DEVICES, AS DETAILED ON THIS SHEET, AND AS REQUIRED BY THE RESIDENT ENGINEER, SHALL BE PAID UNDER ITEM 641.10 TRAFFIC CONTRL.
7. MAINLINE TRAFFIC CONTROL PLAN SHALL BE TREATED AS A MOBILE OPERATION AND SHALL BE IN CONFORMANCE WITH VAOT STANDARD E-112 TRAFFIC CONTROL FOR TYPICAL MOVING MAINTENANCE OPERATIONS.

NOTES:

1. WHEN MARKING EQUIPMENT IS WORKING AT OR NEAR EXIT OR ENTRANCE RAMPS, UNIFORMED TRAFFIC CONTROL OFFICERS SHOULD BE USED TO ASSIST IN CONTROLLING TRAFFIC.
2. ALL SIGNS SHALL BE PLACED BEFORE ANY WORK BEGINS OR EQUIPMENT IS PUT ON THE ROADWAY. SIGNS SHALL BE COVERED OR REMOVED WHEN NOT APPLICABLE.
3. PORTABLE SIGNS SHALL BE KEPT LEVEL WHEN PLACED ON THE EDGE OF ROADWAY AND ALL VEGETATION THAT INTERFERES WITH VISIBILITY OF THE SIGNS SHALL BE REMOVED. PAYMENT SUBSIDIARY TO OTHER ITEMS.
4. WARNING LIGHTS SHALL NOT BE USED ON CHANNELIZING DEVICES.
5. THE NUMBER OF CHANNELIZING DEVICES, TYPE III BARRICADES AND OTHER TRAFFIC CONTROL DEVICES SHOWN ON THIS SHEET ARE FOR ILLUSTRATIVE PURPOSES ONLY. THE ACTUAL NUMBER REQUIRED ARE TO BE DETERMINED BASED ON INDIVIDUAL DETOUR CONDITIONS (TAPERS, LENGTH OF DETOUR CURVE, ETC.).



LEGEND

- REFL. 28" CONES
- ↑ INDICATES TRAFFIC FLOW
- ⊠ FLASHING ARROW PANEL
- TYPE III BARRICADES
- ⊞ TYPE III BARRICADES (MOD.)
- (500) - DENOTES DISTANCE FROM BEGIN MERGE TAPER
- ⊞ - TRUCK/TRAILER MOUNTED ATTENUATOR (OPTIONAL)

NOT TO SCALE

pave/99k318/mark100.dgn/mark005.1

PROJECT STATEWIDE INTERSTATE PAVEMENT MARKING CONTRACT IMG MARK (199)

SHEET 5 OF 12 SHEETS