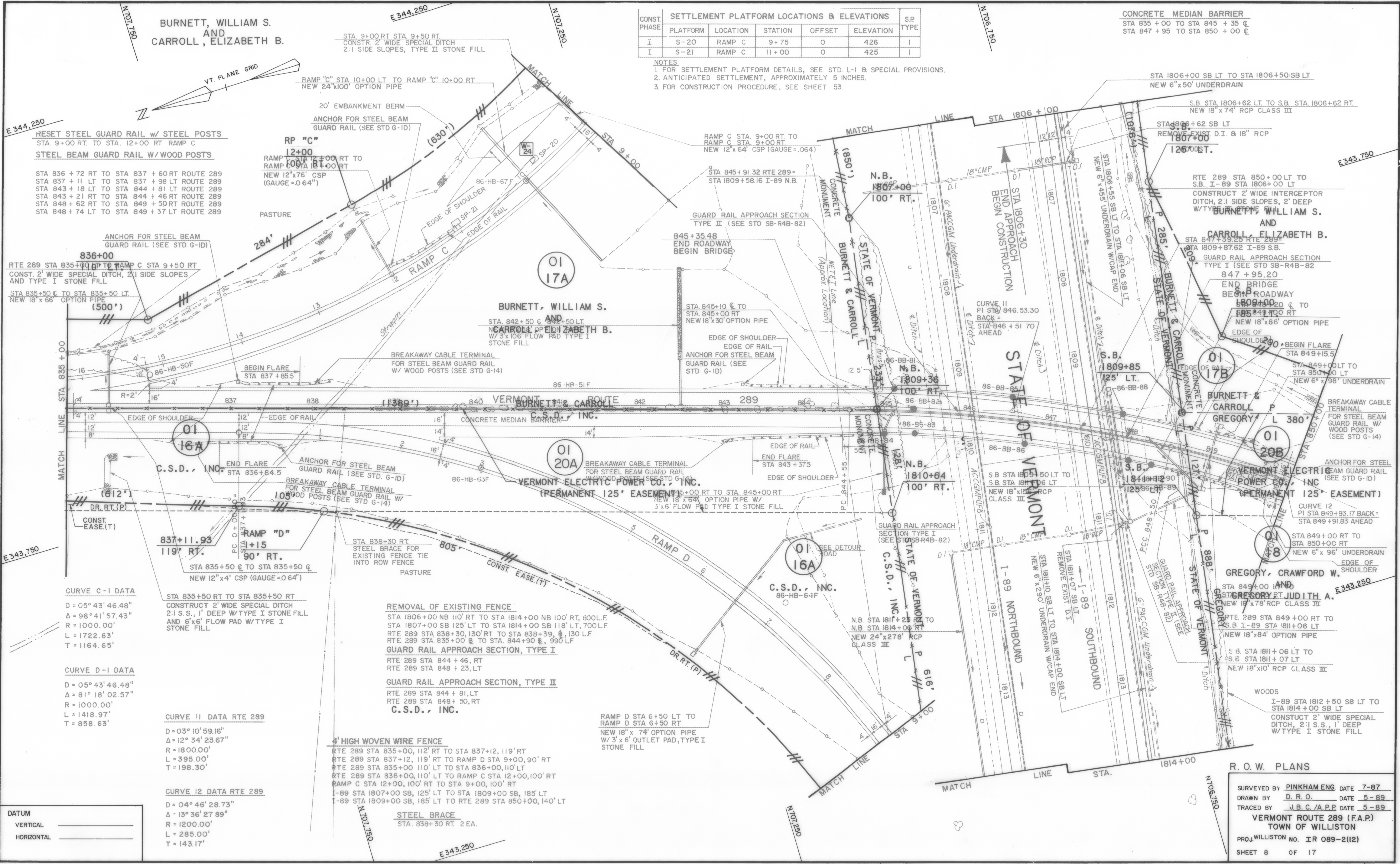


BURNETT, WILLIAM S.  
AND  
CARROLL, ELIZABETH B.

CONST. PHASE	SETTLEMENT PLATFORM LOCATIONS & ELEVATIONS					S.P. TYPE
	PLATFORM	LOCATION	STATION	OFFSET	ELEVATION	
I	S-20	RAMP C	9+75	0	426	I
I	S-21	RAMP C	11+00	0	425	I

NOTES  
1. FOR SETTLEMENT PLATFORM DETAILS, SEE STD. L-1 & SPECIAL PROVISIONS.  
2. ANTICIPATED SETTLEMENT, APPROXIMATELY 5 INCHES.  
3. FOR CONSTRUCTION PROCEDURE, SEE SHEET 53.

CONCRETE MEDIAN BARRIER  
STA 835+00 TO STA 845+35  
STA 847+95 TO STA 850+00



RESET STEEL GUARD RAIL W/ STEEL POSTS  
STA. 9+00 RT. TO STA. 12+00 RT RAMP C  
STEEL BEAM GUARD RAIL W/ WOOD POSTS

STA 836+72 RT TO STA 837+60 RT ROUTE 289  
STA 837+11 LT TO STA 837+98 LT ROUTE 289  
STA 843+18 LT TO STA 844+81 LT ROUTE 289  
STA 843+21 RT TO STA 844+46 RT ROUTE 289  
STA 848+62 RT TO STA 849+50 RT ROUTE 289  
STA 848+74 LT TO STA 849+37 LT ROUTE 289

ANCHOR FOR STEEL BEAM GUARD RAIL (SEE STD. G-ID)  
RTE 289 STA 835+00 TO RAMP C STA 9+50 RT  
CONST. 2' WIDE SPECIAL DITCH, 2:1 SIDE SLOPES AND TYPE I STONE FILL

STA 835+50 C TO STA 835+50 LT  
NEW 18" x 66" OPTION PIPE (500')

CURVE C-1 DATA  
D = 05° 43' 46.48"  
Δ = 98° 41' 57.43"  
R = 1000.00'  
L = 1722.63'  
T = 1164.65'

CURVE D-1 DATA  
D = 05° 43' 46.48"  
Δ = 81° 18' 02.57"  
R = 1000.00'  
L = 1418.97'  
T = 858.63'

CURVE II DATA RTE 289  
D = 03° 10' 59.16"  
Δ = 12° 34' 23.67"  
R = 1800.00'  
L = 395.00'  
T = 198.30'

CURVE I2 DATA RTE 289  
D = 04° 46' 28.73"  
Δ = 13° 36' 27.89"  
R = 1200.00'  
L = 285.00'  
T = 143.17'

REMOVAL OF EXISTING FENCE  
STA 1806+00 NB 110' RT TO STA 1814+00 NB 100' RT, 800L.F.  
STA 1807+00 SB 125' LT TO STA 1814+00 SB 118' LT, 700L.F.  
RTE 289 STA 838+30, 130' RT TO STA 838+39, 130' L.F.  
RTE 289 STA 835+00 C TO STA 844+90 C, 990' L.F.

GUARD RAIL APPROACH SECTION, TYPE I  
RTE 289 STA 844+46, RT  
RTE 289 STA 848+23, LT

GUARD RAIL APPROACH SECTION, TYPE II  
RTE 289 STA 844+81, LT  
RTE 289 STA 848+50, RT  
C.S.D., INC.

4' HIGH WOVEN WIRE FENCE  
RTE 289 STA 835+00, 112' RT TO STA 837+12, 119' RT  
RTE 289 STA 837+12, 119' RT TO RAMP D STA 9+00, 90' RT  
RTE 289 STA 835+00 110' LT TO STA 836+00, 110' LT  
RTE 289 STA 836+00, 110' LT TO RAMP C STA 12+00, 100' RT  
RAMP C STA 12+00, 100' RT TO STA 9+00, 100' RT  
I-89 STA 1807+00 SB, 125' LT TO STA 1809+00 SB, 185' LT  
I-89 STA 1809+00 SB, 185' LT TO RTE 289 STA 850+00, 140' LT

STEEL BRACE  
STA. 838+30 RT. 2 EA.

R. O. W. PLANS  
SURVEYED BY PINKHAM ENG. DATE 7-87  
DRAWN BY D. R. O. DATE 5-89  
TRACED BY J.B.C./A.P.P. DATE 5-89  
VERMONT ROUTE 289 (F.A.P.)  
TOWN OF WILLISTON  
PROJ. WILLISTON NO. IR 089-2(12)  
SHEET 8 OF 17