

SHADOW CROSS FARM

714

OPEN GRADED ASPHALT FRICTION COURSE
NB I-89 STA 34+00 ~ 40+00

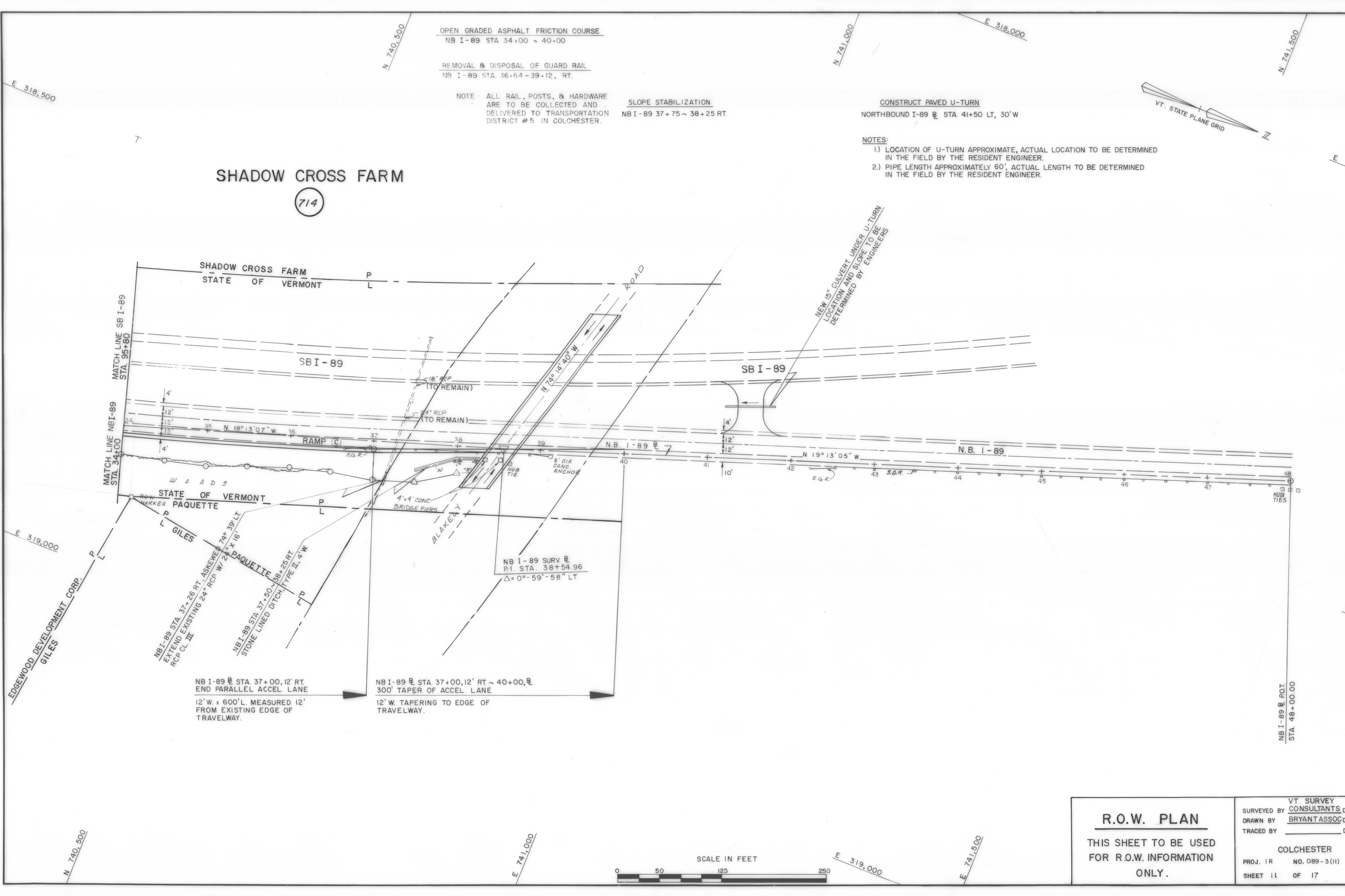
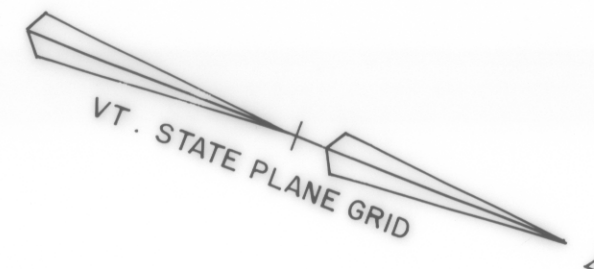
REMOVAL & DISPOSAL OF GUARD RAIL
NB I-89 STA. 36+64 ~ 39+12, RT.

NOTE: ALL RAIL, POSTS, & HARDWARE
ARE TO BE COLLECTED AND
DELIVERED TO TRANSPORTATION
DISTRICT #5 IN COLCHESTER.

SLOPE STABILIZATION
NB I-89 37+75 ~ 38+25 RT.

CONSTRUCT PAVED U-TURN
NORTHBOUND I-89 @ STA 41+50 LT, 30'W

- NOTES:
- 1) LOCATION OF U-TURN APPROXIMATE, ACTUAL LOCATION TO BE DETERMINED IN THE FIELD BY THE RESIDENT ENGINEER.
 - 2) PIPE LENGTH APPROXIMATELY 60', ACTUAL LENGTH TO BE DETERMINED IN THE FIELD BY THE RESIDENT ENGINEER.



MATCH LINE SB I-89
STA. 95+80

MATCH LINE NB I-89
STA. 34+00

NB I-89 @ STA. 37+00, 12' RT.
END PARALLEL ACCEL. LANE
12' W. x 600' L. MEASURED 12'
FROM EXISTING EDGE OF
TRAVELWAY.

NB I-89 @ STA 37+00, 12' RT. ~ 40+00, @
300' TAPER OF ACCEL. LANE
12' W. TAPERING TO EDGE OF
TRAVELWAY.

NB I-89 SURV @
P.I. STA. 38+54.96
 $\Delta = 0^\circ - 59' - 58''$ LT.

NEW 15" CULVERT UNDER U-TURN
LOCATION AND SLOPE TO BE
DETERMINED BY ENGINEERS

<h3>R.O.W. PLAN</h3> <p>THIS SHEET TO BE USED FOR R.O.W. INFORMATION ONLY.</p>	VT. SURVEY
	SURVEYED BY CONSULTANTS DATE _____
	DRAWN BY BRYANT ASSOC DATE _____
	TRACED BY _____ DATE _____
COLCHESTER	
PROJ. 1R	NO. 089-3(11)
SHEET 11	OF 17

