

REMOVAL OF EXISTING FENCE

RTE 289 STA 807+00, 5' RT TO STA 816+00, 4' RT
 RTE 289 STA 807+00, 15' RT TO STA 816+00, 23' RT
 RTE 289 STA 813+53, 95' RT TO STA 813+58, 22' RT

STEEL BEAM GUARD RAIL W/ WOOD POSTS

RTE 289 STA 820+25, LT TO STA 820+74, LT
 RTE 289 STA 820+50, RT TO STA 820+82, RT
 RTE 289 STA 821+64, LT TO STA 822+00, LT
 RTE 289 STA 821+73, RT TO STA 822+00, RT

GUARD RAIL APPROACH SECTION, TYPE I

RTE 289 STA 820+82, RT
 RTE 289 STA 821+15, LT

GUARD RAIL APPROACH SECTION, TYPE II

RTE 289 STA 820+74, LT
 RTE 289 STA 821+60, RT

CONCRETE MEDIAN BARRIER

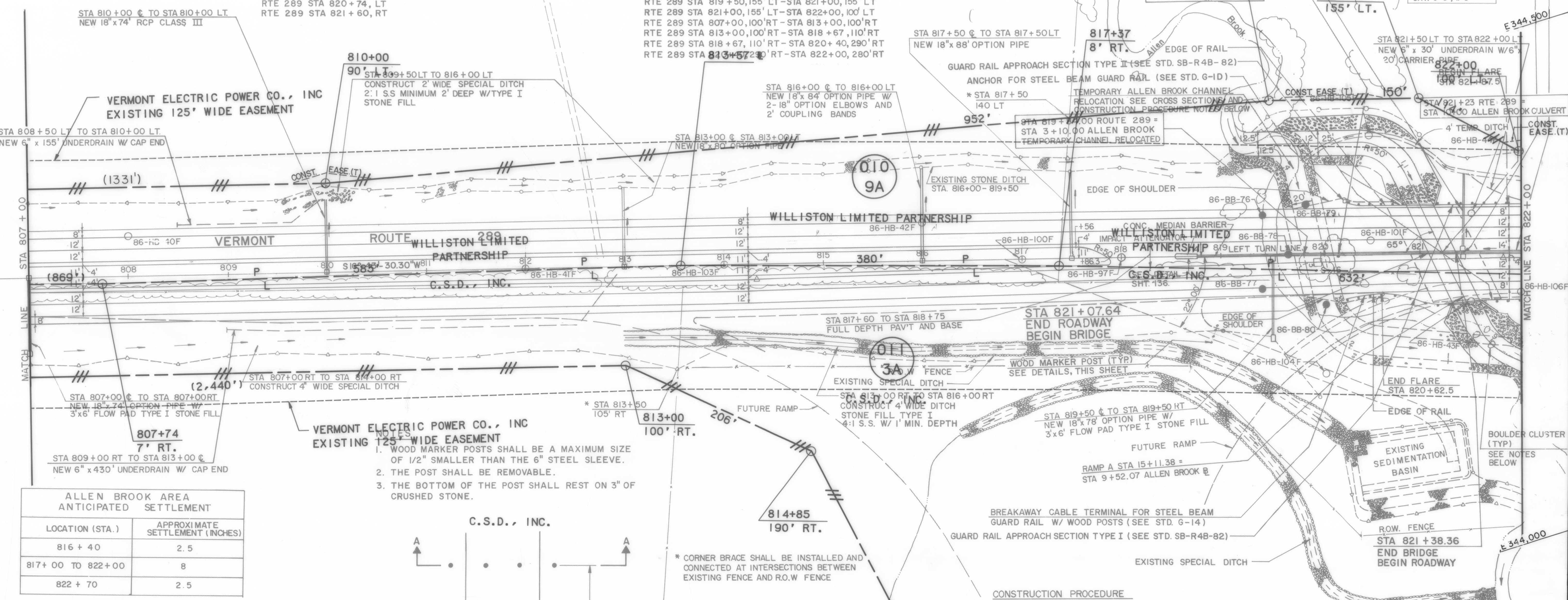
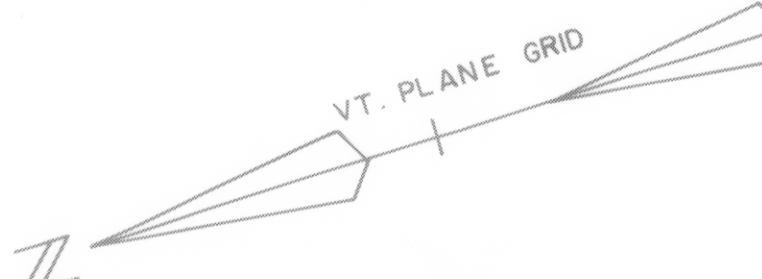
RTE 289 STA 818+75 TO STA 821+05
 RTE 289 STA 821+40 TO STA 822+00

NATIVE TURF ESTABLISHMENT

RTE 289 STA 819+00, LT TO STA 821+40, LT
 RTE 289 STA 821+25, RT TO STA 822+00, RT

4' HIGH WOVEN WIRE FENCE

RTE 289 STA 807+00, 90' LT - STA 810+00, 90' LT
 RTE 289 STA 810+00, 90' LT - STA 819+50, 155' LT
 RTE 289 STA 819+50, 155' LT - STA 821+00, 155' LT
 RTE 289 STA 821+00, 155' LT - STA 822+00, 100' LT
 RTE 289 STA 807+00, 100' RT - STA 813+00, 100' RT
 RTE 289 STA 813+00, 100' RT - STA 818+67, 110' RT
 RTE 289 STA 818+67, 110' RT - STA 820+40, 290' RT
 RTE 289 STA 820+40, 290' RT - STA 822+00, 280' RT



VERMONT ELECTRIC POWER CO., INC
 EXISTING 125' WIDE EASEMENT

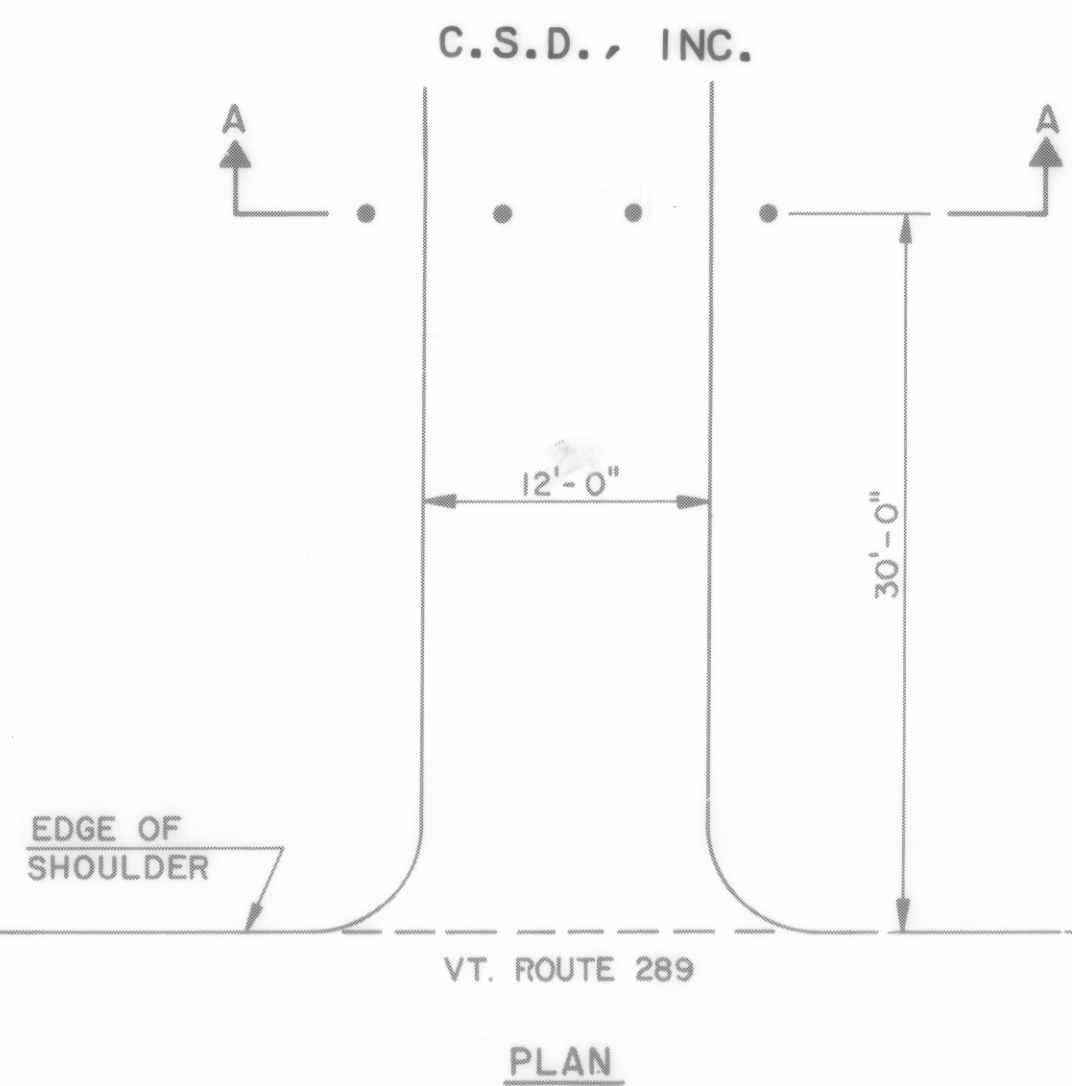
STA 808+50 LT TO STA 810+00 LT
 NEW 6" x 155' UNDERDRAIN W/ CAP END

807+74
 7' RT.
 STA 809+00 RT TO STA 813+00 C
 NEW 6" x 430' UNDERDRAIN W/ CAP END

ALLEN BROOK AREA ANTICIPATED SETTLEMENT

LOCATION (STA.)	APPROXIMATE SETTLEMENT (INCHES)
816+40	2.5
817+00 TO 822+00	8
822+70	2.5

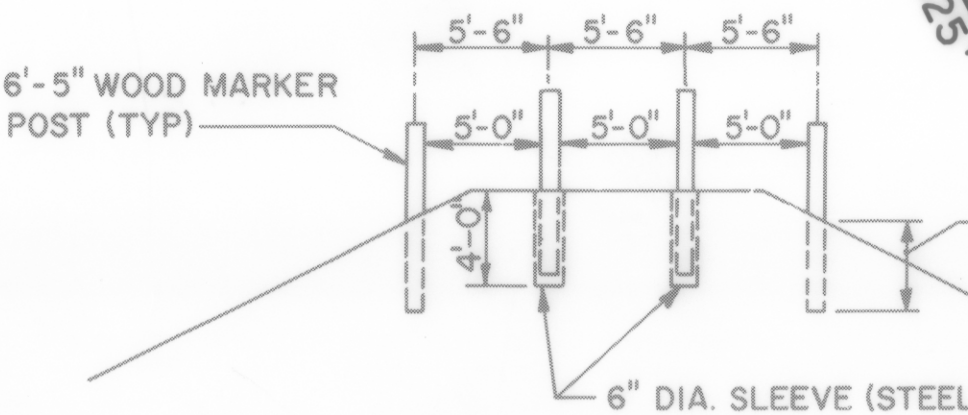
- VERMONT ELECTRIC POWER CO., INC
 EXISTING 125' WIDE EASEMENT
- WOOD MARKER POSTS SHALL BE A MAXIMUM SIZE OF 1/2" SMALLER THAN THE 6" STEEL SLEEVE.
 - THE POST SHALL BE REMOVABLE.
 - THE BOTTOM OF THE POST SHALL REST ON 3" OF CRUSHED STONE.



TYPICAL SECTION

DATUM
 VERTICAL _____
 HORIZONTAL _____

* CORNER BRACE SHALL BE INSTALLED AND CONNECTED AT INTERSECTIONS BETWEEN EXISTING FENCE AND R.O.W FENCE



SECTION A-A

CONSTRUCTION PROCEDURE
 CONSTRUCTION PHASE I (BY OTHERS)
 CONSTRUCTION PHASE II

- CONSTRUCT ALLEN BROOK CULVERT STRUCTURE, DIVERT FLOW FROM TEMPORARY CHANNEL TO CULVERT STRUCTURE
- INSTALL SETTLEMENT PLATFORM S-16.
- REMOVE STONEFILL AND BACKFILL TEMPORARY CHANNEL
- WAITING PERIOD (6 MONTHS)
- CONSTRUCT ROADWAY

CONSTR. PHASE	SETTLEMENT PLATFORM LOCATION	STATION	OFFSET	ELEVATION	S.P. TYPE	
II	S	VT. 289	819+95	5' RT.	379*	I

* APPROX. DRAIN BLANKET ELEVATION
 SETTLEMENT PLATFORM TYPE I, FOR DETAIL SEE STD. L-1

- NOTES:
- BOULDER CLUSTERS SHALL NOT BE MEASURED SEPARATELY BUT SHALL BE CONSIDERED SUBSIDIARY TO STONE FILL TYPE II
 - FOR ADDITIONAL NOTES ON BOULDER CLUSTER SEE BRIDGE SHEET # 1
 - REFER TO SHEET NO. 136 FOR ENERGY ABSORPTION ATTENUATION ROW PLANS

SURVEYED BY PINKHAM ENG. DATE 8-87
 DRAWN BY D.R.O. DATE 6-89
 TRACED BY J.B.C./C.S.L. DATE 6-89
VERMONT ROUTE 289 (F.A.R.)
TOWN OF WILLISTON
 PROJ. WILLISTON COLCHESTER No. PB 033-1(1)
 SHEET 17 OF 26