

4' HIGH WOVEN WIRE FENCE

REDMOND RD. CONN. STA 25+55, 100' LT TO REDMOND RD. CONN. STA 22+48, 96' LT
 REDMOND RD. CONN. STA 22+48, 96' LT TO REDMOND RD. RELOC. STA 13+50, 235' LT
 REDMOND RD. RELOC. STA 18+20, 52' LT TO REDMOND RD. CONN. STA 21+50, 125' RT
 REDMOND RD. CONN. STA 21+50, 125' RT TO REDMOND RD. CONN. STA 22+48, 86' RT
 REDMOND RD. CONN. STA 22+48, 86' RT TO REDMOND RD. CONN. STA 25+55, 86' RT

6' HIGH CHAIN LINK FENCE

REDMOND RD. RELOC. STA 13+50, 235' LT TO REDMOND RD. CONN. STA 21+82, 72' LT
 REDMOND RD. CONN. STA 21+82, 72' LT TO REDMOND RD. RELOC. STA 14+75, 23' LT
 REDMOND RD. RELOC. STA 13+30, 50' LT TO REDMOND RD. RELOC. STA 13+55, 44' LT
 REDMOND RD. RELOC. STA 13+68, 41' LT TO REDMOND RD. RELOC. STA 14+75, 23' LT
 REDMOND RD. RELOC. STA 13+30 50' LT TO REDMOND RD. RELOC. STA 13+50, 235' LT

GATE FOR CHAIN LINK FENCE, 6 FEET

REDMOND RD. RELOC. STA 13+55, 44' LT TO REDMOND RD. RELOC. STA 13+68, 41' LT

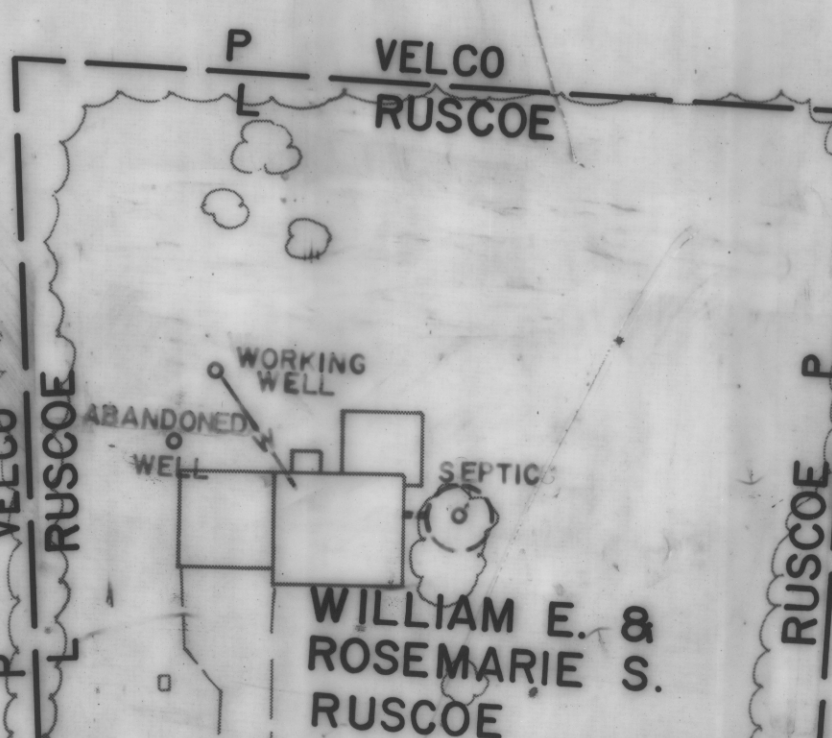
CURVE 1 DATA REDMOND ROAD

D = 5° 12' 31.35"
 R = 1100'
 Δ = 26° 51' 50.63"
 T = 262.71'
 L = 515.75'
 E = 30.94'

GRANITE SLOPE EDGING

REDMOND RD. CONN. STA. 20+35 TO STA. 23+00, 494'

VERMONT ELECTRIC POWER CO., INC.



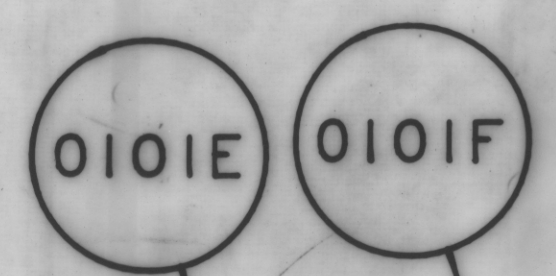
WILLIAM E. & ROSEMARIE S. RUSCOE

8+00 BEGIN APPROACH
 BEGIN RELINQUISHMENT NO. III
 REDMOND RD. REL. 8+00 @ (2,111')
 P.I. REDMOND ROAD RELOCATION
 STA 6+84.07 BACK =
 STA 6+74.40 AHEAD

RED. RD. REL. 8+00
 27' LT.

RED. RD. REL. 8+00
 2' LT.

RED. RD. REL. 8+00
 22' RT.



RED. RD. REL. 13+50
 235' LT.

RED. RD. REL. 13+30
 50' LT.

STA 13+35 LT TO STA 13+80 LT
 NEW 18"x48" OPTION PIPE

RED. RD. REL. 13+30
 15'+41.65' REDMOND ROAD RELOCATION
 18' RT. 19+95.97 REDMOND ROAD CONNECTOR

STA 14+50 LT TO STA 14+64 RT
 NEW 48"x90' OPTION PIPE WITH STRAIGHT HEADWALLS AT INLET AND OUTLET

INTERNATIONAL BUSINESS MACHINES, INC.

CURVE 1
 P.I. REDMOND ROAD CONNECTOR
 STA 25+03.98 BACK =
 STA 24+79.86 AHEAD

REDMOND ROAD CONN.
 RAMP D 17+11.76 =
 24+95.34 REDMOND ROAD CONNECTOR 24+95.34
 96' LT.

STA 21+60 LT TO STA 25+55 LT
 CONSTRUCT 4' WIDE, 1' DEEP SPECIAL DITCH W/TYPE I STONE FILL

REDMOND ROAD CONN.
 22+48.50
 96' LT.

B.M. HYDRANT #121 ON BONNET BOLT
 MUE O LLER
 447.62

STA 20+50 LT TO STA 20+50 RT
 NEW 18"x90' RCP CLASS III

VERMONT ELECTRIC POWER CO. INC.

REDMOND ROAD CONN.
 21+50
 125' RT.

RED. RD. REL. 18+20
 52' LT.

RED. RD. REL. 18+20.04
 18' LT.

CURVE 2 DATA REDMOND ROAD RELOCATION

D = 2° 51' 53.24"
 R = 2000'
 Δ = 6° 51' 30.55"
 T = 119.85'
 L = 239.41'
 E = 3.59'

CURVE 1 DATA REDMOND ROAD CONNECTOR
 D = 8° 48' 53.05"
 R = 650'
 Δ = 42° 54' 48.75"
 T = 255.48'
 L = 486.84'
 E = 48.40'

STA 20+50 RT TO STA 20+65 RT
 NEW 18"x90' RCP CLASS III

STA 20+45 RT TO STA 21+13 RT
 NEW 18"x90' OPTION PIPE WITH/END SECTION AT INLET

STA 17+00.48 BACK =
 STA 17+00.19 AHEAD

STA 17+00.48 BACK =
 STA 17+00.19 AHEAD

STA 17+00.48 BACK =
 STA 17+00.19 AHEAD

STA 17+00.48 BACK =
 STA 17+00.19 AHEAD

STA 17+00.48 BACK =
 STA 17+00.19 AHEAD

STA 17+00.48 BACK =
 STA 17+00.19 AHEAD

STA 17+00.48 BACK =
 STA 17+00.19 AHEAD

STA 17+00.48 BACK =
 STA 17+00.19 AHEAD

STA 17+00.48 BACK =
 STA 17+00.19 AHEAD

STA 17+00.48 BACK =
 STA 17+00.19 AHEAD

STA 17+00.48 BACK =
 STA 17+00.19 AHEAD

STA 17+00.48 BACK =
 STA 17+00.19 AHEAD

STA 17+00.48 BACK =
 STA 17+00.19 AHEAD

STA 17+00.48 BACK =
 STA 17+00.19 AHEAD

DATUM
 VERTICAL _____
 HORIZONTAL _____

R.O.W. PLANS

SURVEYED BY PINKHAM ENG. DATE 6/87
 DRAWN BY D.R.O. DATE 12/88
 TRACED BY N.P.D. DATE 12/88

VERMONT ROUTE 289 (F.A.P.)
 TOWN OF WILLISTON

PROJ. WILLISTON - NO. PB 033-1(I)
 COLCHESTER

SHEET 21 OF 35