

INDEX OF SHEETS

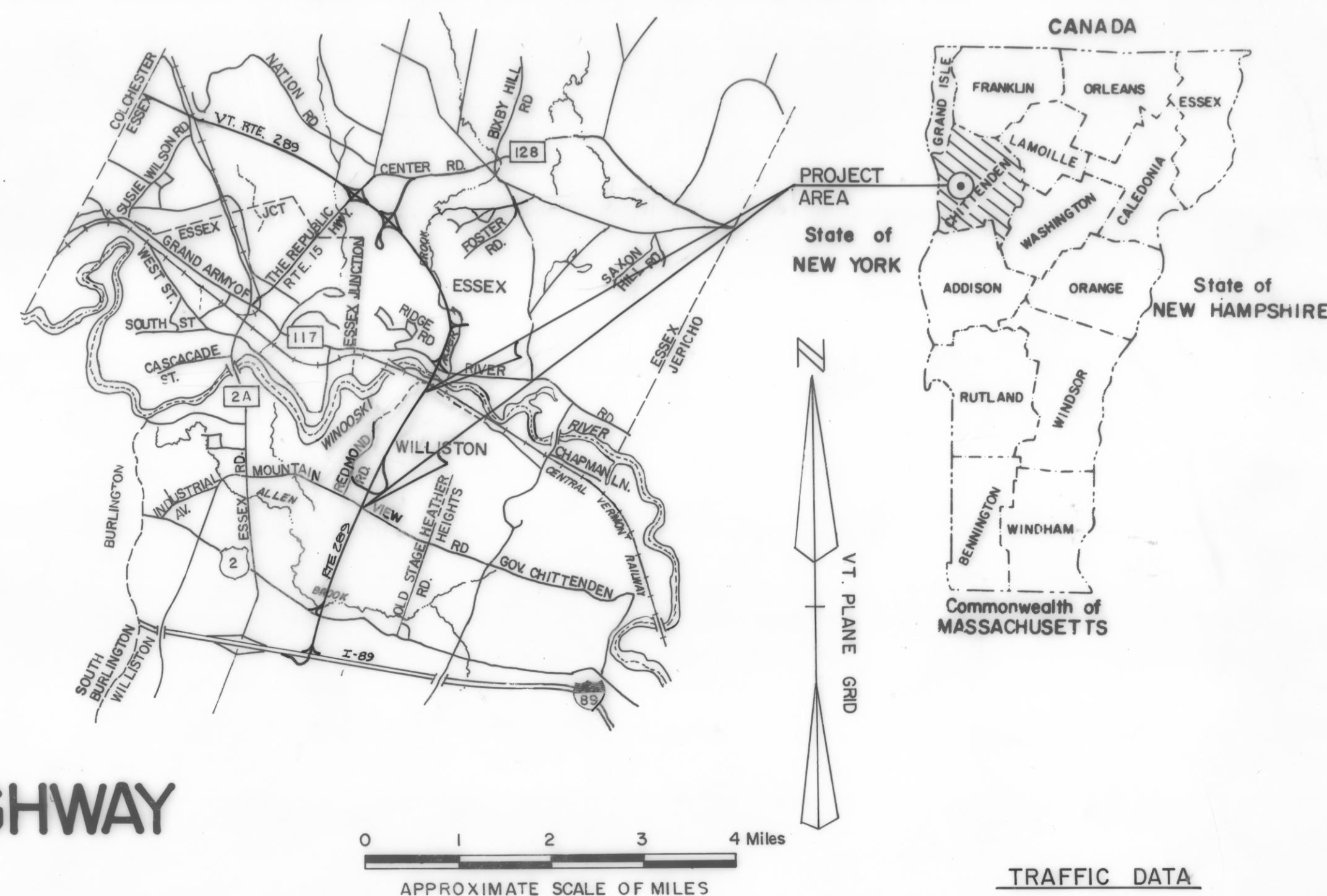
SHEET	1	TITLE SHEET
	2 - 9	TYPICAL SECTIONS
	10 - 13	R.O.W. DETAIL SHEETS
	14 - 24	R.O.W. LAYOUT SHEETS
	25 - 35	PROFILE SHEETS

STATE OF VERMONT AGENCY OF TRANSPORTATION



PROPOSED IMPROVEMENT TOWN OF WILLISTON COUNTY OF CHITTENDEN CHITTENDEN COUNTY CIRCUMFERENTIAL HIGHWAY VERMONT ROUTE 289 (F.A.P.)

BEGINNING AT A POINT APPROXIMATELY 0.403 MILES SOUTHWESTERLY OF ROUTE 117 AND EXTENDING SOUTHWESTERLY 1.306 MILES TO MOUNTAIN VIEW ROAD.
LENGTH OF R.O.W. PROJECT 6893.32 FT. = 1.306 MILE

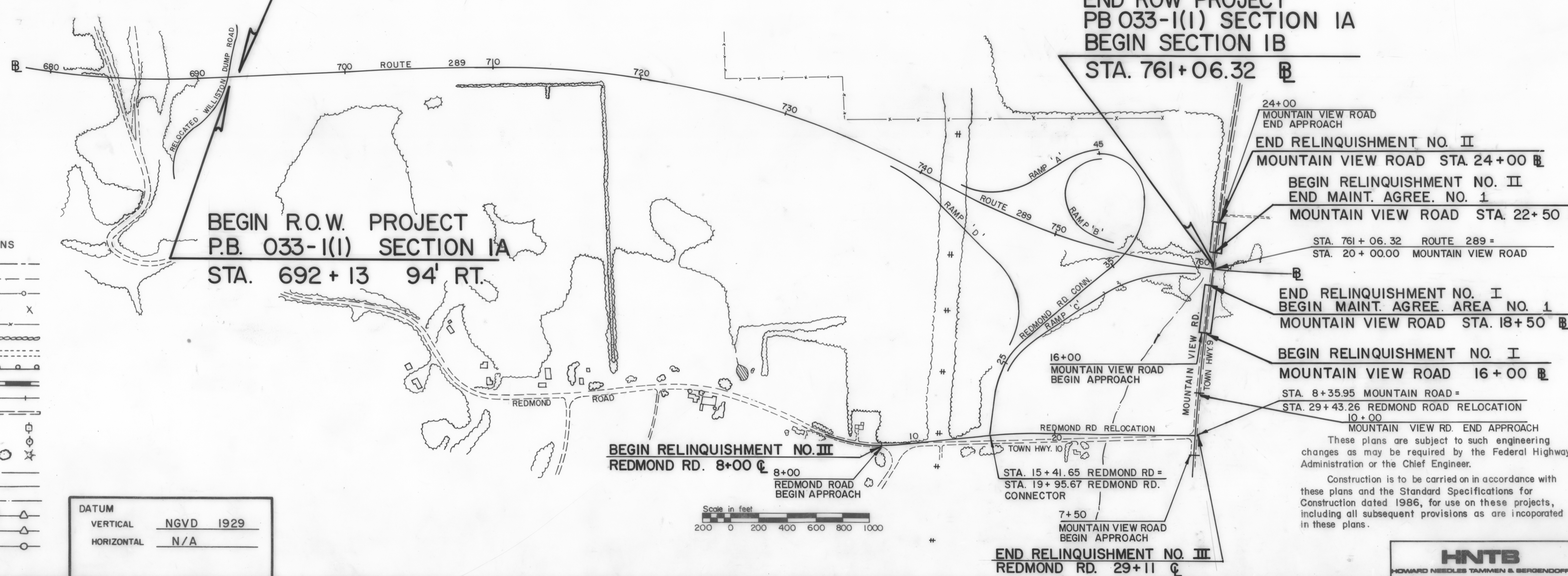


TRAFFIC DATA

1984	ADT	
2004	ADT	16000
1984	DHV	
2004	DHV	1500
	T	5%
	V	50 MPH

END R.O.W. PROJECT
P.B. 033-1(I) SECTION 2
STA. 693 + 38 210' LT.

R.O.W. PLANS



BEGIN R.O.W. PROJECT
P.B. 033-1(I) SECTION IA
STA. 692 + 13 94' RT.

END ROW PROJECT
PB 033-1(I) SECTION IA
BEGIN SECTION IB
STA. 761+06.32

- CONVENTIONAL SIGNS**
- COUNTY LINE
 - TOWN LINE
 - LIMITS OF ACCESS
 - POINT OF ACCESS
 - FENCE LINE
 - STONE WALL
 - TRAVELED WAY
 - GUARD RAIL
 - RAILROAD
 - SURVEY LINE
 - CULVERT
 - POWER POLE
 - TELEPHONE POLE
 - TREES
 - CONTROL OF ACCESS
 - PROPERTY LINE
 - R.O.W. TAKING LINE
 - SLOPE RIGHTS
 - TOP OF CUT
 - TOE OF SLOPE

DATUM
VERTICAL NGVD 1929
HORIZONTAL N/A

24+00 MOUNTAIN VIEW ROAD END APPROACH
END RELINQUISHMENT NO. II
MOUNTAIN VIEW ROAD STA. 24+00
BEGIN RELINQUISHMENT NO. II
END MAINT. AGREE. NO. 1
MOUNTAIN VIEW ROAD STA. 22+50
STA. 761+06.32 ROUTE 289 = STA. 20+00.00 MOUNTAIN VIEW ROAD
END RELINQUISHMENT NO. I
BEGIN MAINT. AGREE. AREA NO. 1
MOUNTAIN VIEW ROAD STA. 18+50
BEGIN RELINQUISHMENT NO. I
MOUNTAIN VIEW ROAD 16+00
STA. 8+35.95 MOUNTAIN ROAD = STA. 29+43.26 REDMOND ROAD RELOCATION
10+00 MOUNTAIN VIEW RD. END APPROACH
These plans are subject to such engineering changes as may be required by the Federal Highway Administration or the Chief Engineer.
Construction is to be carried on in accordance with these plans and the Standard Specifications for Construction dated 1986, for use on these projects, including all subsequent provisions as are incorporated in these plans.

BEGIN RELINQUISHMENT NO. III
REDMOND RD. 8+00
8+00 REDMOND ROAD BEGIN APPROACH
STA. 15+41.65 REDMOND RD = STA. 19+95.67 REDMOND RD. CONNECTOR
7+50 MOUNTAIN VIEW ROAD BEGIN APPROACH
END RELINQUISHMENT NO. III
REDMOND RD. 29+11

SUBMITTED BY ORDER OF THE STATE TRANSPORTATION BOARD

APPROVED _____ DATE _____
DIRECTOR OF ENGINEERING AND CONSTRUCTION

APPROVED _____ DATE _____
RIGHT OF WAY DIRECTOR

PROJECT	PROJECT NO.
WILLISTON - COLCHESTER	PB 033-1(I)

SHEET 1 OF 35 SHEETS
D-10 S.R.S. 12/17/70

