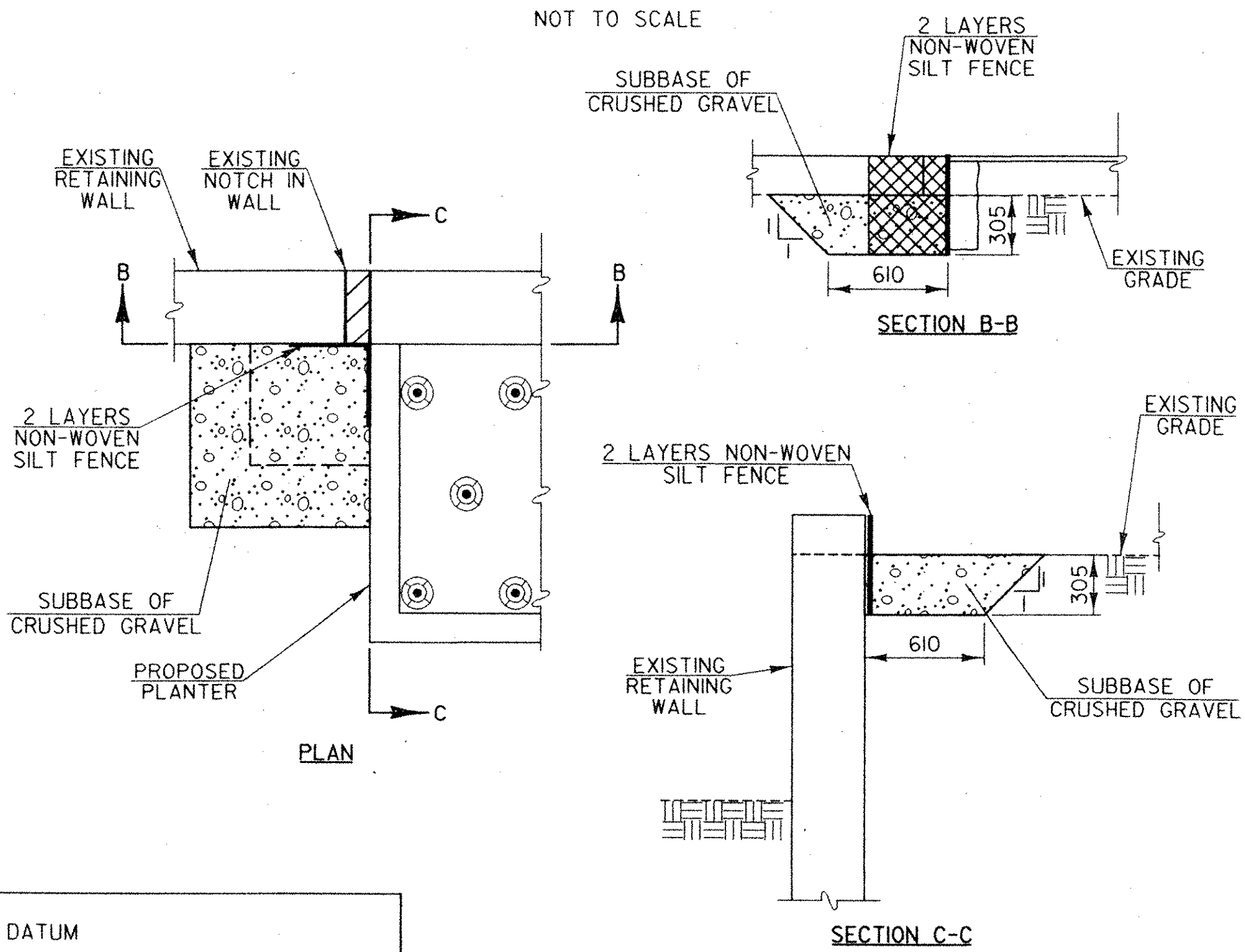
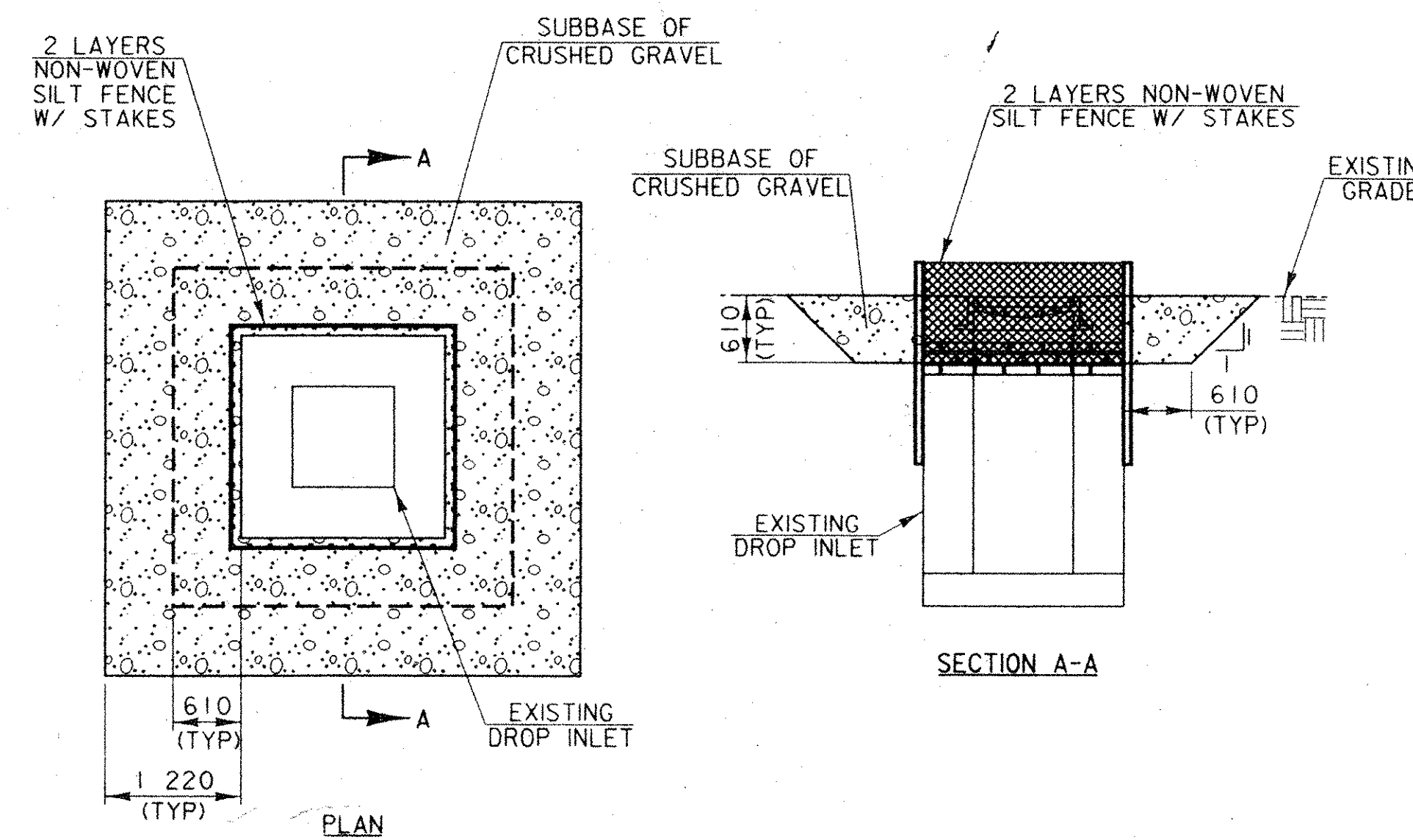


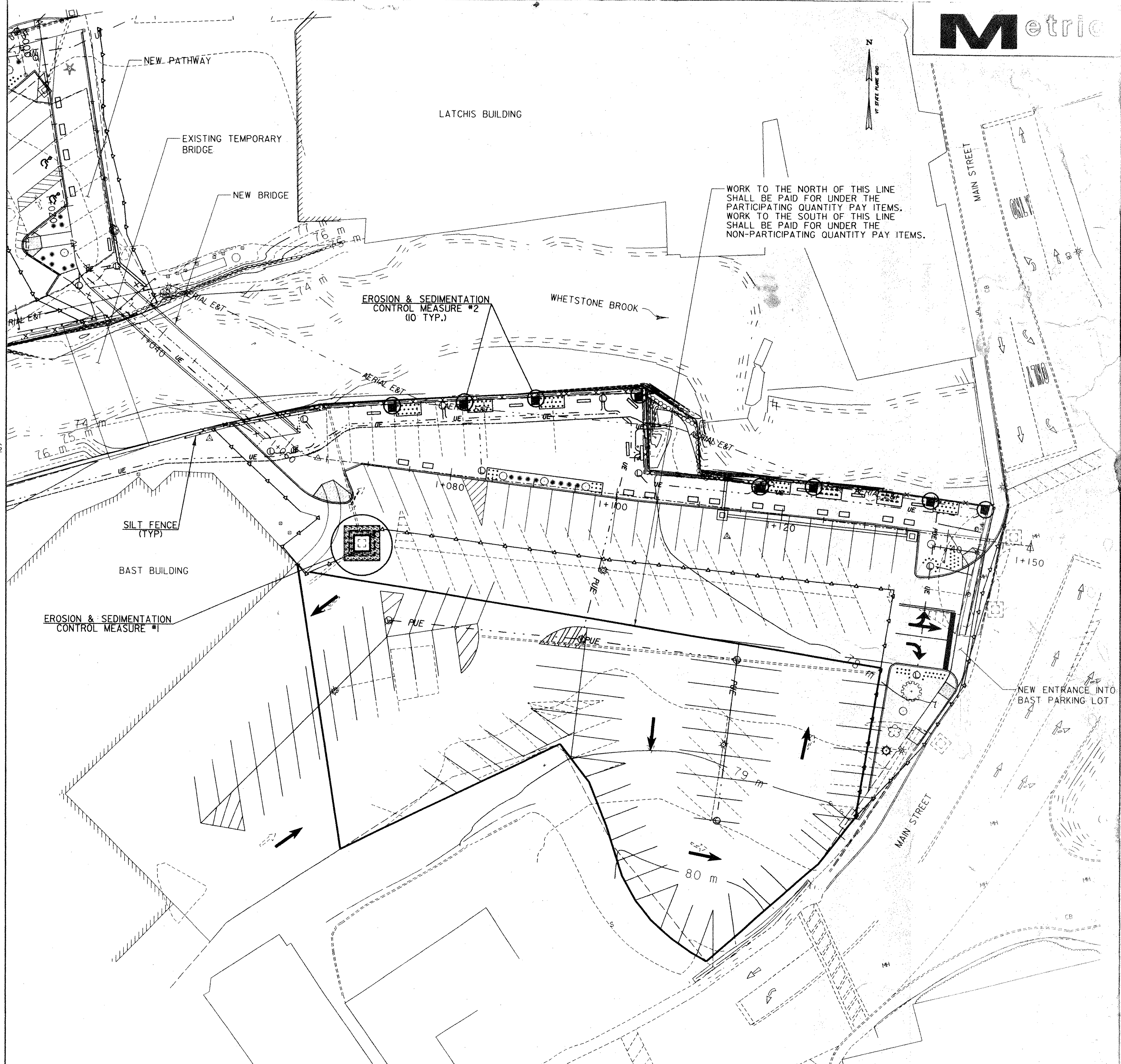
EROSION CONTROL NOTES

1. THE CONTRACTOR IS RESPONSIBLE FOR THE INSTALLATION, MAINTENANCE AND MONITORING OF EROSION CONTROL DEVICES AS SPECIFIED IN THE SPECIAL PROVISIONS AND SUPPLEMENTAL SPECIFICATIONS AND AS INDICATED ON THESE PLANS.
2. TEMPORARY SEDIMENT CONTROL MEASURES SHALL BE IN PLACE AND APPROVED BY THE RESIDENT ENGINEER PRIOR TO EXCAVATION OF SURFACES, BEYOND THOSE NECESSARY TO INSTALL THESE MEASURES.
3. ONE OBJECTIVE OF THE EROSION PREVENTION AND SEDIMENT CONTROL PLAN IS TO MINIMIZE THE TIME THAT EXCAVATED SOILS ARE EXPOSED TO THE ELEMENTS. EXCAVATION OF THE UTILITY TRENCHES, ABUTMENTS, RETAINING WALL AND OVERALL PATHWAY SURFACE SHALL BE SEQUENCED TO ACHIEVE THIS OBJECTIVE. THIS SEQUENCING OF EXCAVATION WORK SHALL BE IN THE CONTRACTOR'S EROSION AND SEDIMENT CONTROL PLAN.
4. FOR EXAMPLE, EXCAVATION AND BACKFILLING OF THE UTILITY TRENCHES SHOULD OCCUR PRIOR TO REMOVING ALL OF THE EXISTING ASPHALT WITHIN THE NEW PATHWAY. NEW ASPHALT SHOULD BE PLACED OVER THE TRENCHES IN AREAS OUTSIDE THE LIMITS OF THE PATHWAY PRIOR TO EXCAVATION OF THE PATHWAY (IE: BAST PARKING LOT LIGHTS, UTILITY TRENCH BEHIND BUILDING).
5. THE EXCAVATED AREA FOR THE NEW ABUTMENTS AND FOOTINGS SHALL BE STABILIZED TO PREVENT SURFACE WATER FROM TRANSPORTING SEDIMENTS INTO THE BROOK.
6. NON-WOVEN SILT FENCE WITH STAKES WILL BE PAID FOR UNDER ITEM 654.10, 'EROSION MATTING'.
7. INLET TO THE TWO NEW CATCH BASINS SHALL BE COVERED TO PREVENT THE TRANSPORT OF SEDIMENTS INTO THEM UNTIL SUCH TIME THAT THE PATHWAY CURBING IS INSTALLED AND STORMWATER RUNOFF CANNOT SHEET FLOW TO THE EXISTING NOTCHES IN THE RETAINING WALLS. THE CONTRACTOR MAY INSTALL ALTERNATIVE MEASURES SUBJECT TO APPROVAL BY THE RESIDENT ENGINEER.

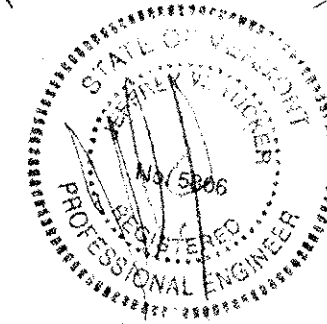
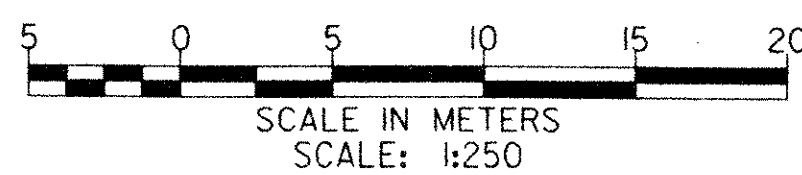


DATUM
VERTICAL NVD 88
HORIZONTAL NAD 83

EROSION CONTROL MEASURE #2
NOT TO SCALE



EROSION & SEDIMENTATION CONTROL



PLOTTED: 03/11/2004

DuBois & King INC.
engineering planning management development

TOWN OF BRATTLEBORO
BRATTLEBORO, VERMONT
WHETSTONE BROOK PATHWAY PROJECT
STP BIKE (27) S
EROSION & SEDIMENTATION CONTROL

DRAWN BY SJB	DATE FEB. 2004
CHECKED BY JTB	PROJ. NO. R16544
PROJ. ENG.	DRAW. NO. 1408
SHEET 30 OF 30	

