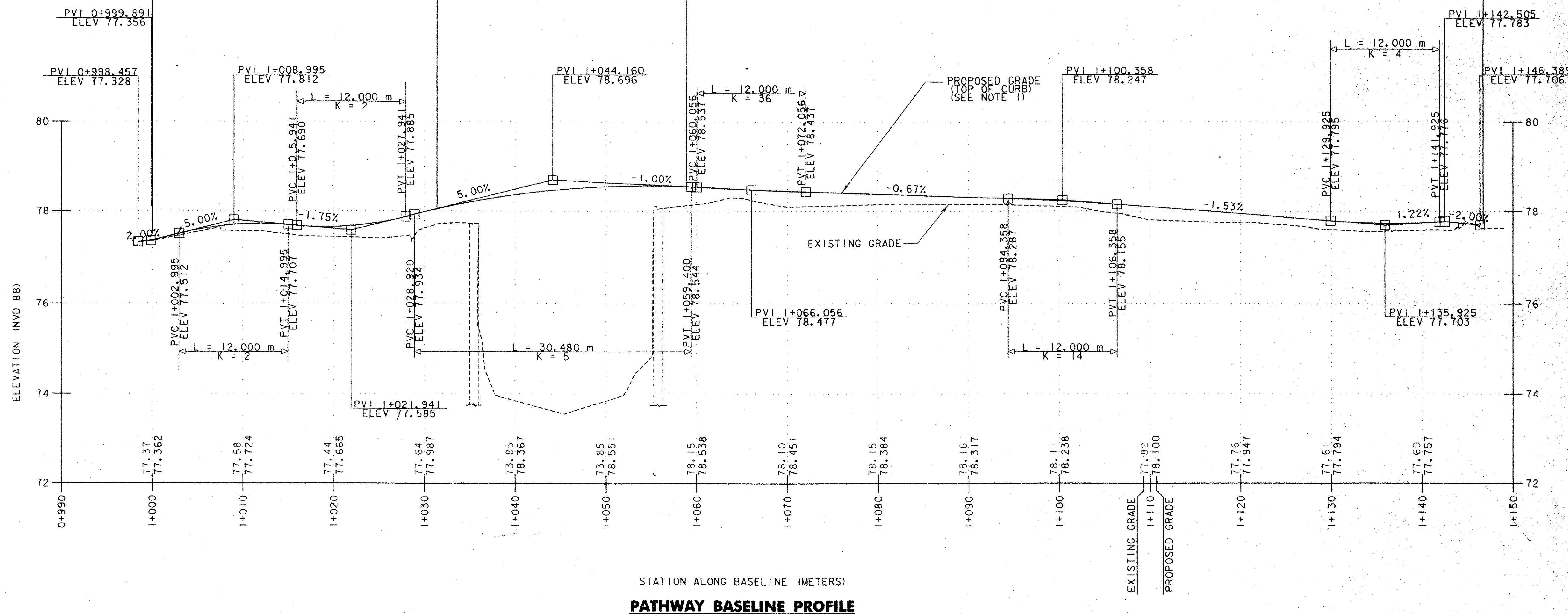


**BEGIN PROJECT
STP BIKE (27) S
STA. 1+000.000
(MATCH EXISTING)**

**STA. 1+031.400
BEGIN BRIDGE
FG. ELEV. = 78.052**

**STA. 1+058.832
END BRIDGE
FG. ELEV. = 78.549**

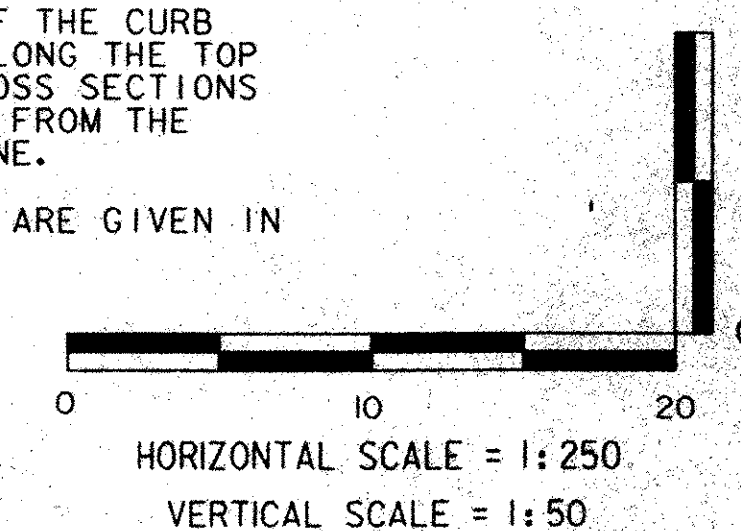
**END PROJECT
STP BIKE (27) S
STA. 1+146.725
(MATCH EXISTING)**



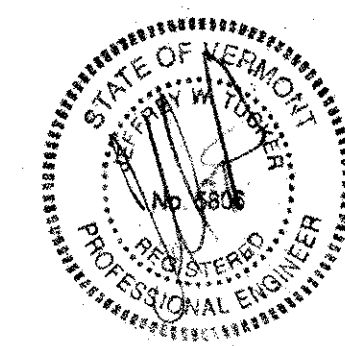
STATION ALONG BASELINE (METERS)
PATHWAY BASELINE PROFILE

NOTES:

- FOR LOCATIONS WHERE THE BASELINE IS AT THE BOTTOM FACE OF THE CURB (PARKING LOT SIDE), PROPOSED GRADE SHOWN ON PROFILE IS ALONG THE TOP OF CURB. SEE TYPICAL SECTIONS ON SHEET 2 AND PATHWAY CROSS SECTIONS FOR DETAILS. TABLE 1 ON SHEET 24 SHOWS OFFSET DISTANCES FROM THE BOTTOM FACE OF THE CURB (PARKING LOT SIDE) TO THE BASELINE.
- STATIONS ARE GIVEN IN KILOMETERS, ELEVATIONS AND LENGTHS ARE GIVEN IN METERS.



DATUM
VERTICAL NVD 88
HORIZONTAL NAD 83



 engineering planning management development	TOWN OF BRATTLEBORO BRATTLEBORO, VERMONT		DRAWN BY SJB	DATE FEB. 2004
	WHETSTONE BROOK PATHWAY PROJECT STP BIKE (27) S		CHECKED BY JDA	PROJ. NO. R16544
	PROFILE SHEET		PROJ. ENG. JDA	DRAW. NO. 11436
			SHEET	8 OF 30

PLOTTED: 03/11/2004