

TYPICAL TRUSS ELEVATION (WEST TRUSS LOOKING WEST SHOWN) Δ

SCALE 1/4" = 1'-0"

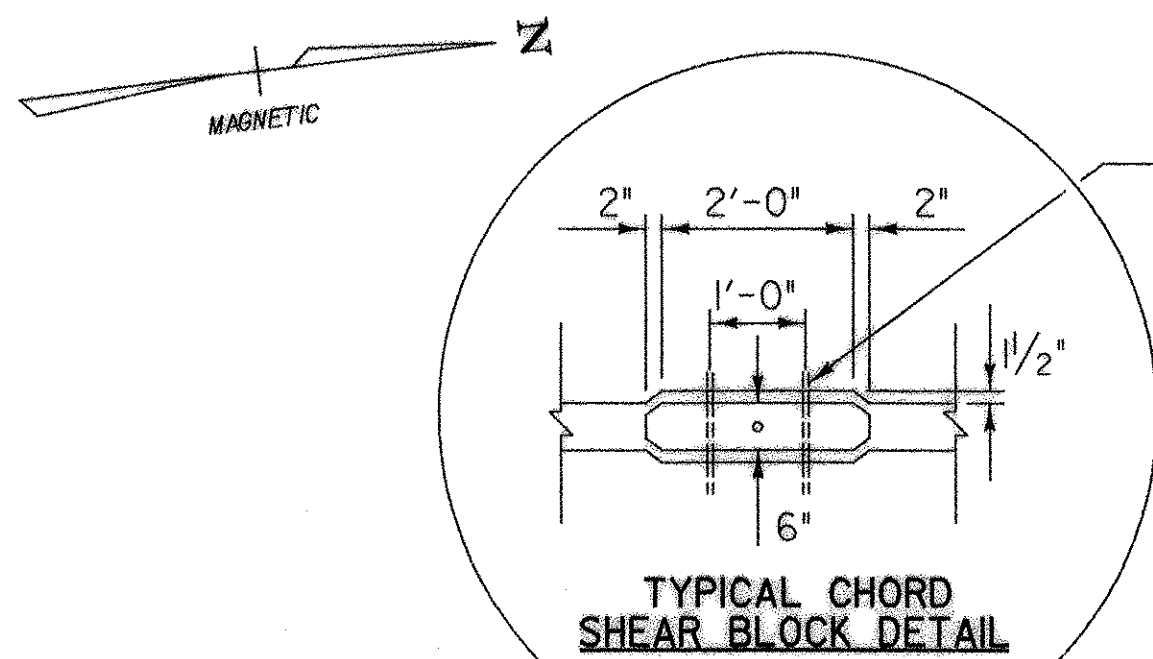
TABLE 1 - VERTICAL ROD SIZES

NODES	O.D. (INCH)
2, 3, 15, 16	2 1/4"
4, 5, 6, 12, 13, 14	1 3/4"
7, 8, 9, 10, 11	1"

TABLE 2 - WEB MEMBER SIZES

KEY	SIZE
A	2 - 6" x 10" FS
B	1 - 5" x 8" FS
C	2 - 6" x 8" FS

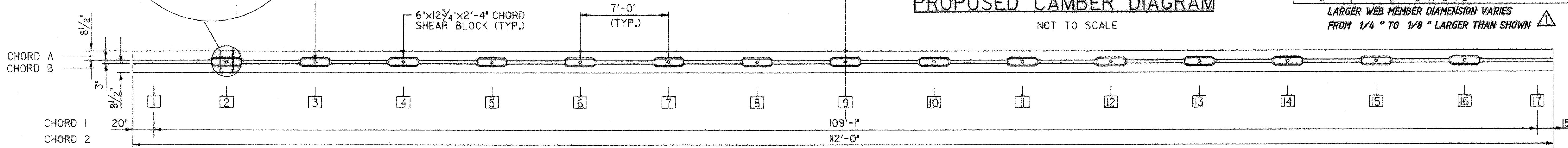
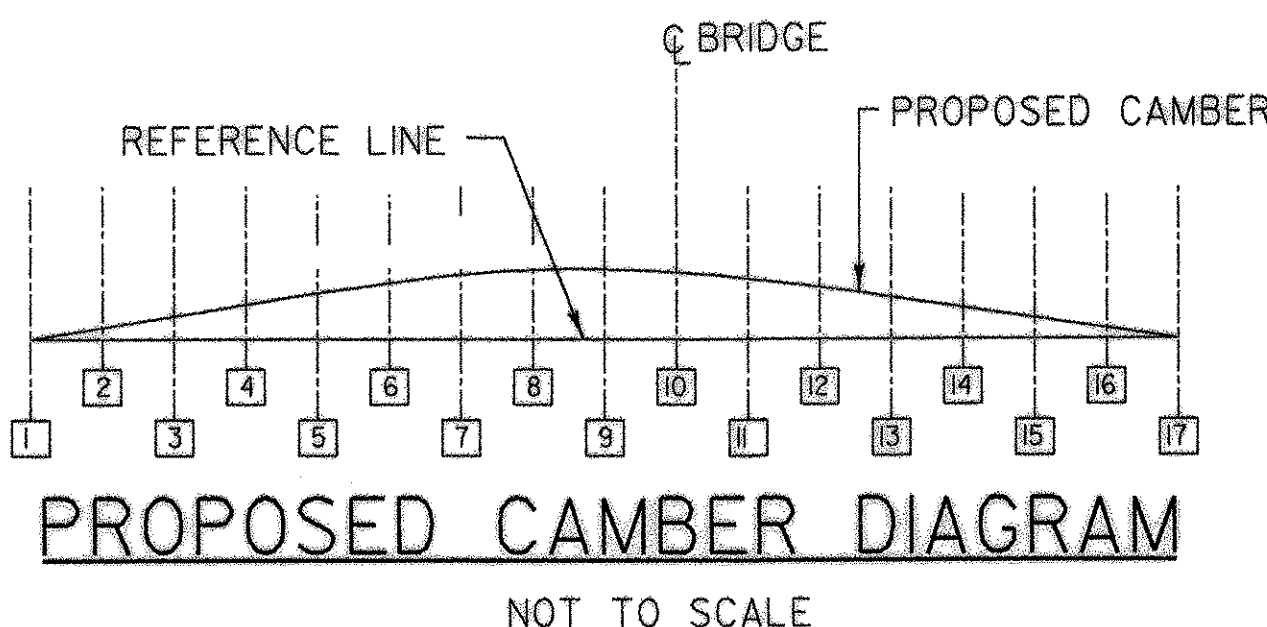
LARGER WEB MEMBER DIAMETER VARIES FROM 1/4" TO 1/8" LARGER THAN SHOWN Δ



4 - 3/4" DIA. GALVANIZED THROUGH BOLTS WITH Ogee WASHERS. PLACE WASHERS ON OUTSIDE FACE OF CHORDS. SEE DETAIL "A".

HOLE FOR VERTICAL ROD (TYP.) (SEE PLAN NOTE 6)

6"x12 3/4"x2'-4" CHORD SHEAR BLOCK (TYP.)



CHORD 1 & 2 PLAN Δ

SCALE 1/4" = 1'-0"

PLAN NOTES:

- ALL WORK SHOWN ON THIS DRAWING OTHER THAN THE STEEL RODS SHALL BE PAID FOR UNDER ITEM 522 UNLESS OTHERWISE NOTED. SEE SHEET 13 FOR DETAILS THAT APPLY TO THIS SHEET.
- WEST TRUSS SHOWN, EAST TRUSS IS SIMILAR, BUT MIRRORED.
- CHORD DIMENSIONS ARE BASED ON 0" CAMBER IN THE TRUSS. CONTRACTOR SHALL INCREASE THE LENGTH OF THE CHORD AND WEB MEMBERS AS REQUIRED TO MEET THE OVERALL DIMENSIONS SHOWN ABOVE.
- ALL TRUSS MEMBERS TO BE SOUTHERN PINE NO. 1 GRADE EXCEPT CHORDS 1 AND 2.
- ALL LAG BOLTS AND THROUGH BOLTS USED IN THE CONSTRUCTION OF THE TRUSS SHALL BE GALVANIZED.
- HOLES IN SHEAR BLOCKS FOR VERTICAL RODS SHALL BE 1/2" IN DIA. LARGER THAN THE ROD. HOLES IN STEEL PLATES FOR VERTICAL RODS SHALL BE 1/16" IN DIA. LARGER THAN THE ROD.

CAMBER NOTES:

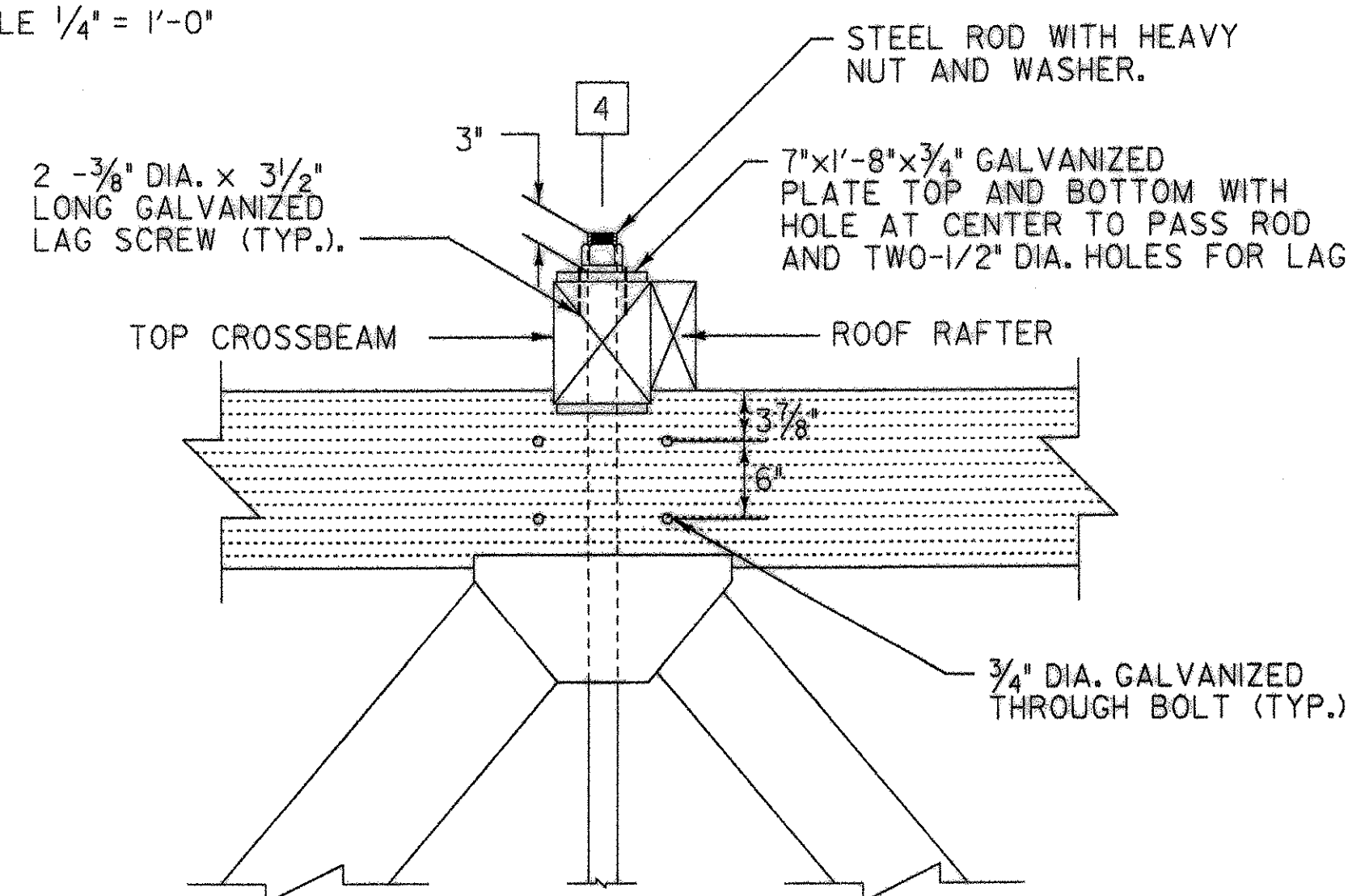
- THE REFERENCE LINE IS A STRAIGHT LEVEL LINE CONNECTING POINTS LOCATED AT THE TOP OF CHORD 2.
- PROPOSED TRUSS CAMBER IS GIVEN AT NODE POINTS AT THE TOP OF CHORD 2. ALL VALUES ARE MEASURED FROM THE REFERENCE LINE AS SHOWN ON THE CAMBER DIAGRAM.
- CAMBER SHOWN SHALL BE BUILT INTO EACH TRUSS IN A HORIZONTAL POSITION. SOME LOSSES WILL OCCUR UPON ERECTION OF THE BRIDGE DUE TO VERTICAL DEAD LOADS.

PROPOSED TRUSS CAMBER Δ

NODES	(2)			NODES	(2)		
	(1)	WEST	EAST		(1)	WEST	EAST
1	0.0	0.00	0.00	10	9.8	7.44	6.72
2	1.9	0.48	1.68	11	9.3	7.20	5.88
3	3.8	1.68	3.24	12	8.3	6.48	5.16
4	5.6	3.12	4.56	13	7.1	5.40	3.84
5	7.1	4.32	5.64	14	5.6	3.96	2.88
6	8.3	5.52	6.60	15	3.8	2.64	1.44
7	9.3	6.48	7.20	16	1.9	1.20	0.12
8	9.8	6.96	7.20	17	0.0	0.00	0.00
9	10.0	7.20	7.20				

(1) CONSTRUCTED CAMBER IN INCHES PRIOR TO ERECTION OF THE BRIDGE AND APPLICATION OF DEAD LOAD IN INCHES.

(2) IN PLACE CAMBER OF COMPLETED BRIDGE IN INCHES TAKEN 9/23/03.

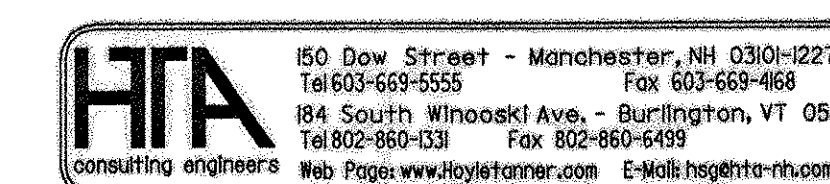
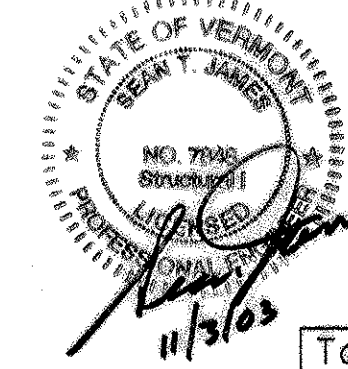


DETAIL "A" Δ

SCALE 1" = 1'-0"

LEGEND

- NODE LOCATION (Q OF VERTICAL TRUSS MEMBER)
- FS FULL SAWN



RECORD COPY REVISIONS		DR BY	CHK BY
		JBM	STJ
Town Of	BRIGHTON	Bridge No.	
Highway No.		Log Sta.	
BRIGHTON PEDESTRIAN BRIDGE			
TRUSS ELEVATION & DETAILS			
Designed By	S.T. JAMES	Drawn By	W. DRUDING
Checked By	R.H. DURFEE	Date	MAY 2002
PROJECT	BRIGHTON	PROJECT NO.	STP BIKE (14)S
I.G.C. Info.	Z9068TR.dgn	Bridge Sheet No.	12
		Sheet	12 of 14