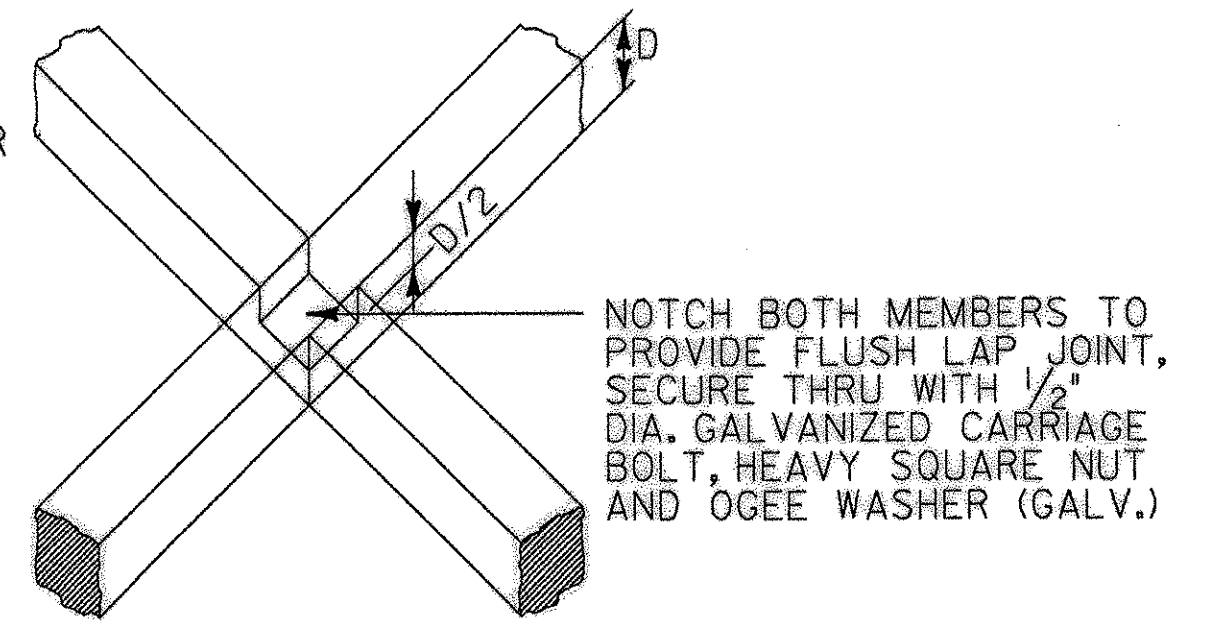


TOP CHORD LATERAL BRACING PLAN △

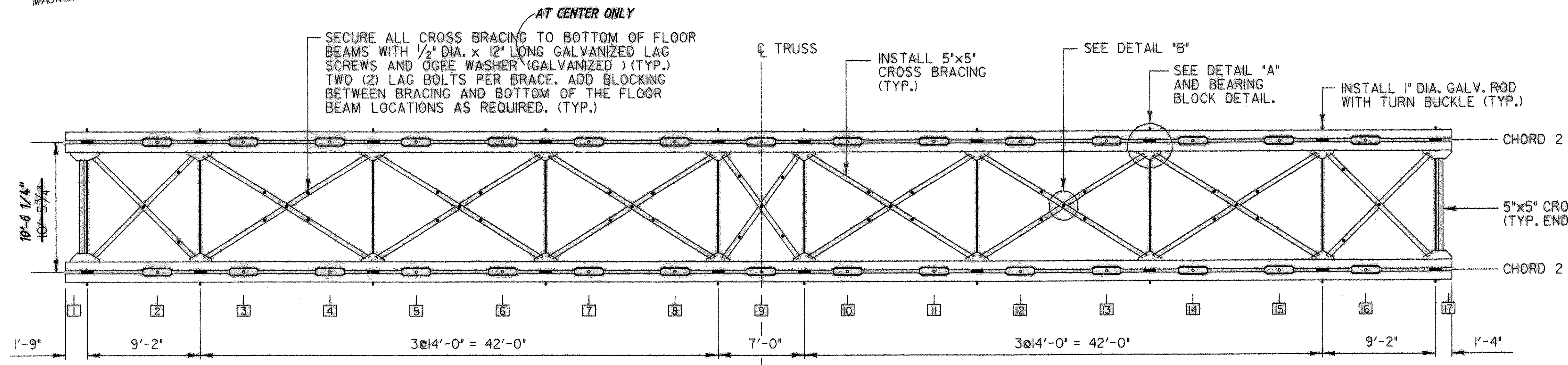
SCALE 3/16" = 1'-0"

NOTE: ROOF RAFTERS AND PURLINS NOT SHOWN FOR CLARITY



DETAIL "B"

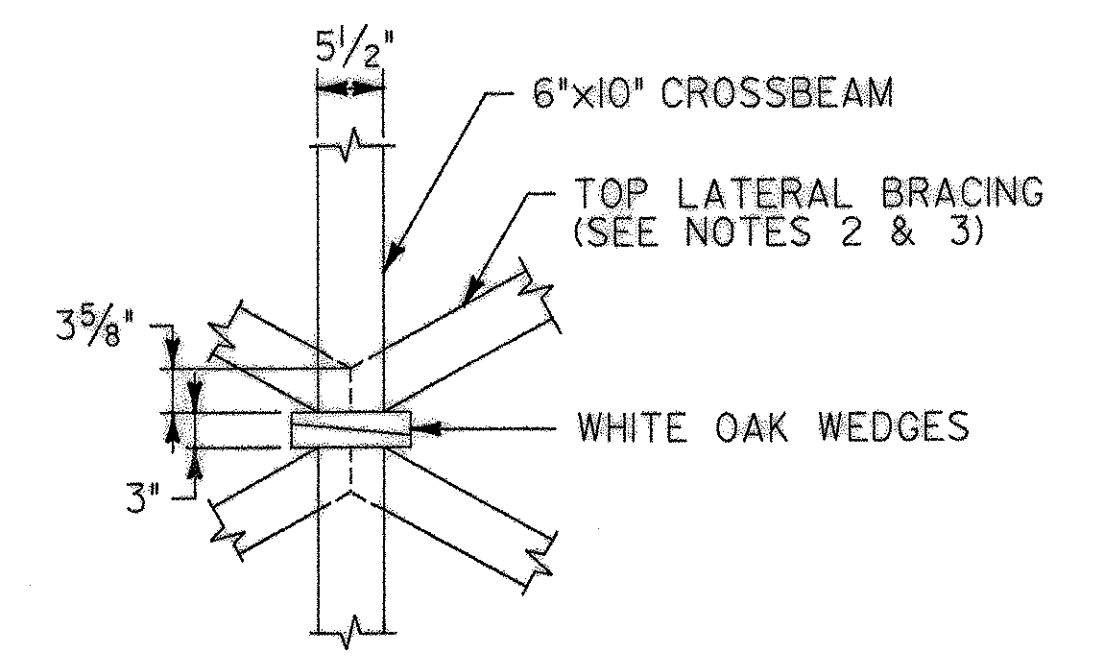
SCALE 3/4" = 1'-0"



BOTTOM CHORD LATERAL BRACING PLAN △

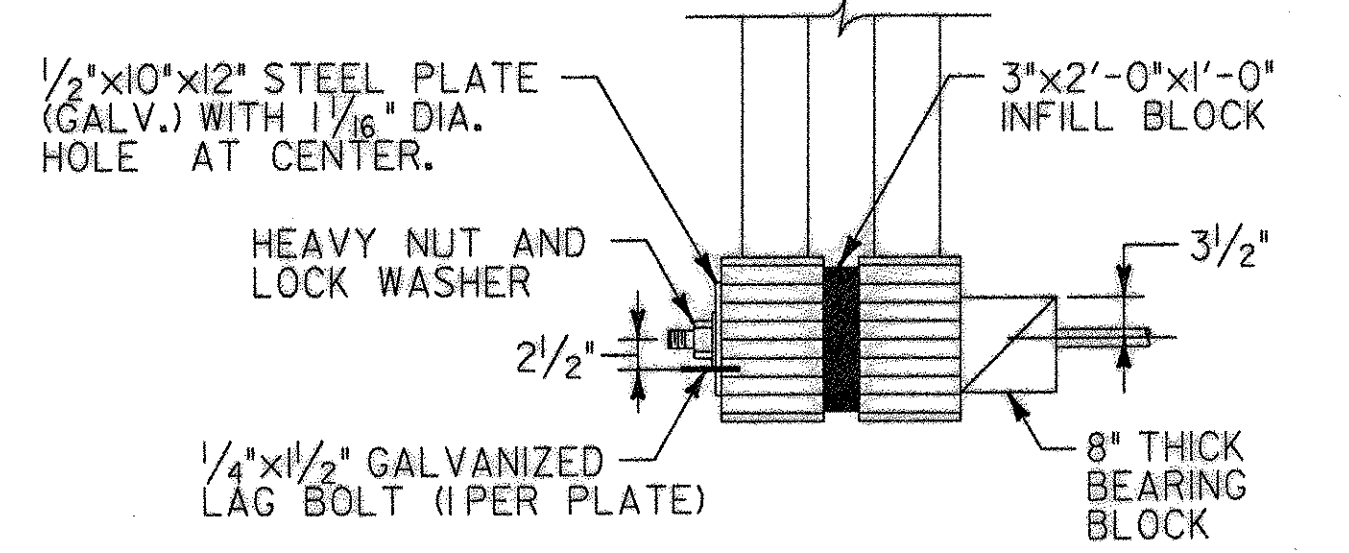
SCALE 3/16" = 1'-0"

NOTE: FLOOR BEAMS AND DECKING NOT SHOWN FOR CLARITY



DETAIL "C"

SCALE 3/4" = 1'-0"



SECTION B-B

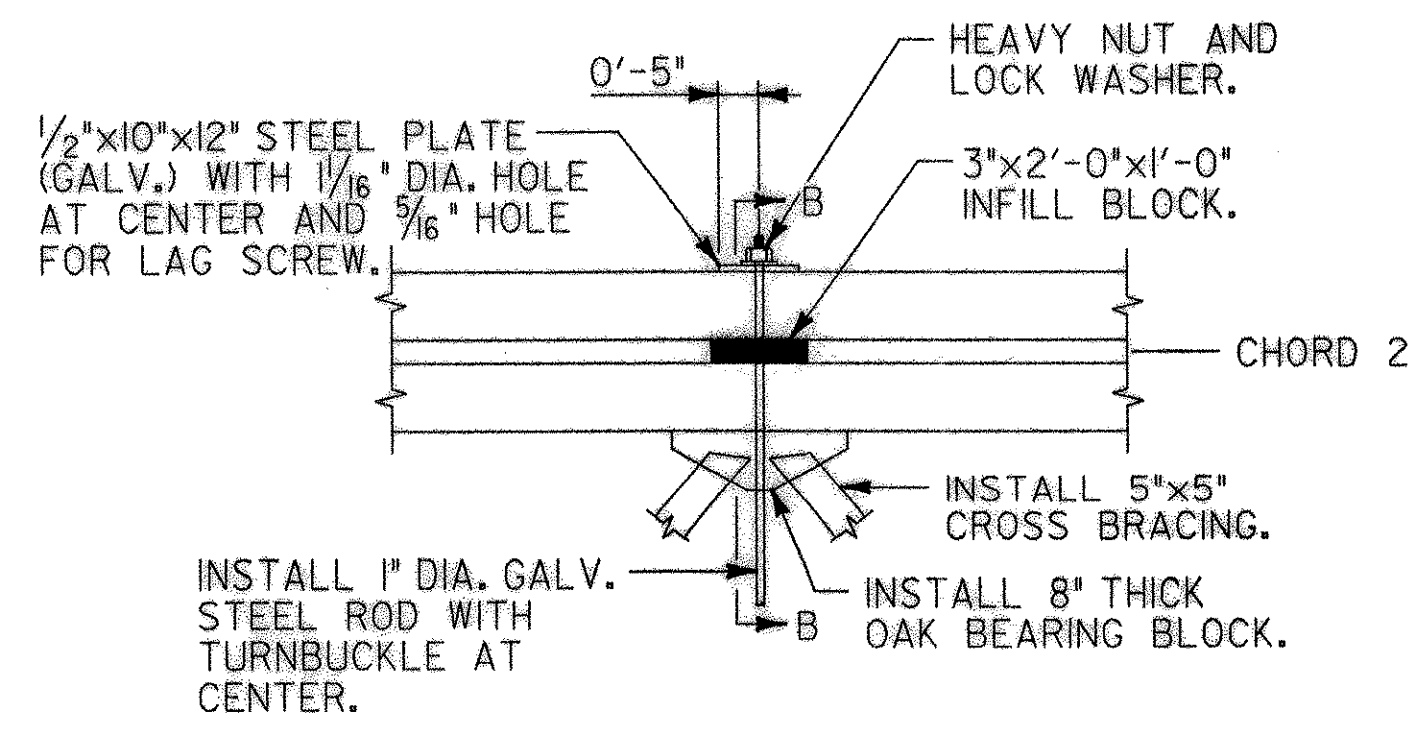
SCALE 3/4" = 1'-0"

LEGEND

- ① NODE LOCATION (C. OF VERTICAL INTERSECTIONS WITH CHORD 2)
- PE- ELECTRICAL

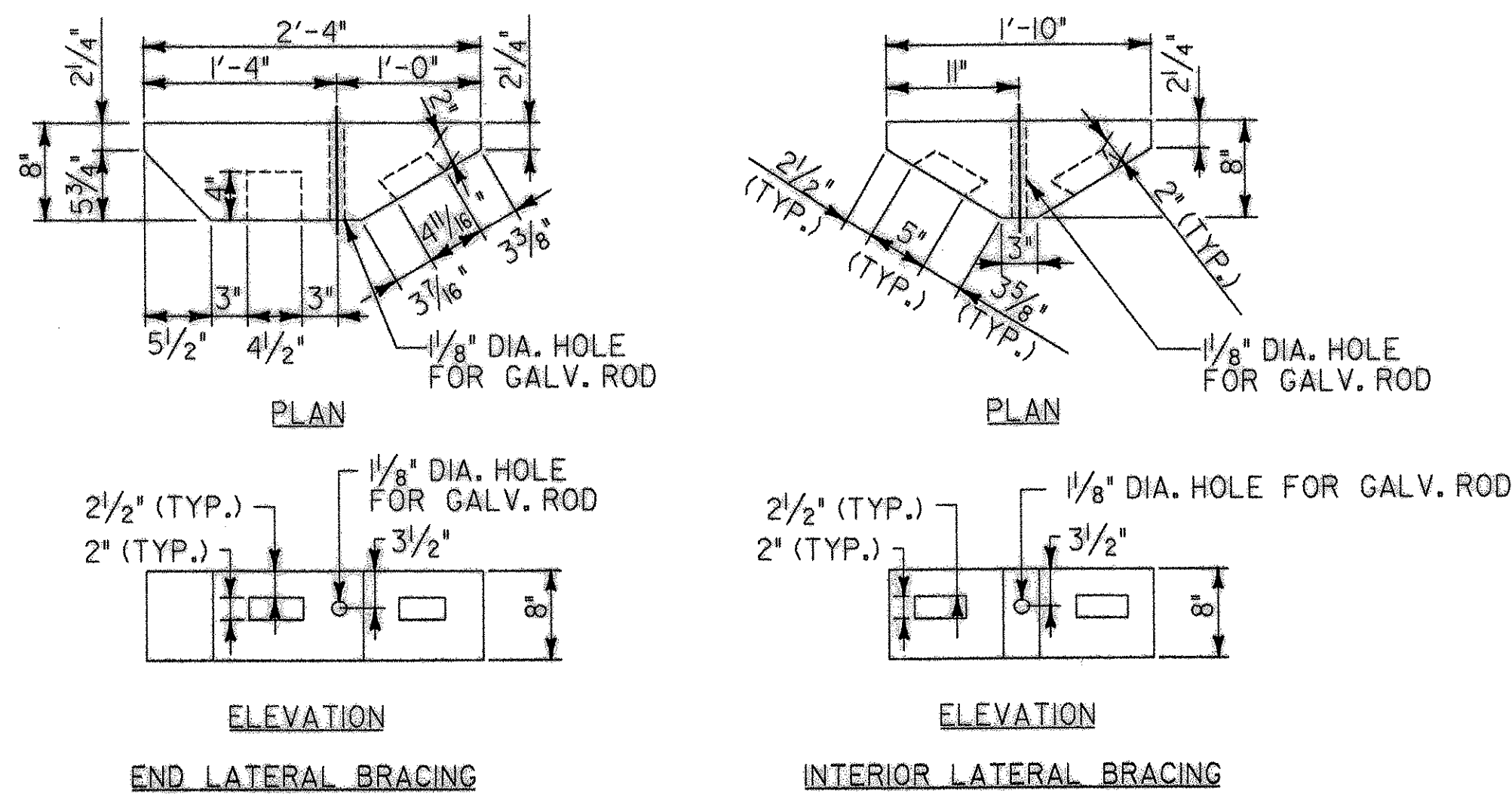
PLAN NOTES

1. ALL WORK SHOWN ON THIS DRAWING, WITH THE EXCEPTION OF LIGHTING, STEEL RODS, LAG SCREWS AND PLATES WILL BE PAID FOR UNDER ITEM 522.
2. THE TOP LATERAL BRACING TENONS SHALL BE 3" IN DEPTH AND CENTERED VERTICALLY ON THE CROSSBEAM.
3. THE TOP LATERAL BRACING JOINT NEAR THE TRUSS CHORDS ARE SIMILAR TO DETAIL "C". △



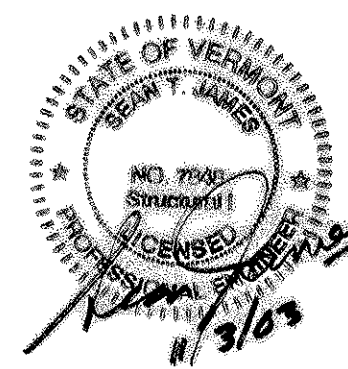
DETAIL "A"

SCALE 1/2" = 1'-0"



BEARING BLOCK DETAIL

SCALE: 1" = 1'-0"



HTA Consulting Engineers
 150 Dow Street - Manchester, NH 03101-2227
 Tel: 603-669-5555 Fax: 603-669-4688
 184 South Winooski Ave. - Burlington, VT 05401
 Tel: 802-860-1331 Fax: 802-860-6495
 Web Page: www.htatanner.com E-Mail: hta@htatanner.com

RECORD COPY REVISIONS		DR. BY	CHK. BY
		JBM	STJ
Town Of	BRIGHTON	Bridge No.	
Highway No.		Log Sta.	
		Surv. Sta.	
BRIGHTON PEDESTRIAN BRIDGE			
LATERAL BRACING & LIGHTING			
Designed By	S.T. JAMES	Drawn By	W. DRUDING
Checked By	R.H. DURFEE	Date	MAY 2002
		Bridge Design Supervisor	Date
PROJECT	BRIGHTON	PROJECT NO.	STP BIKE (14)S
I.G.C. Info.	Z9068LTR.dgn		
Bridge Sheet No.	II	Sheet	II of 14