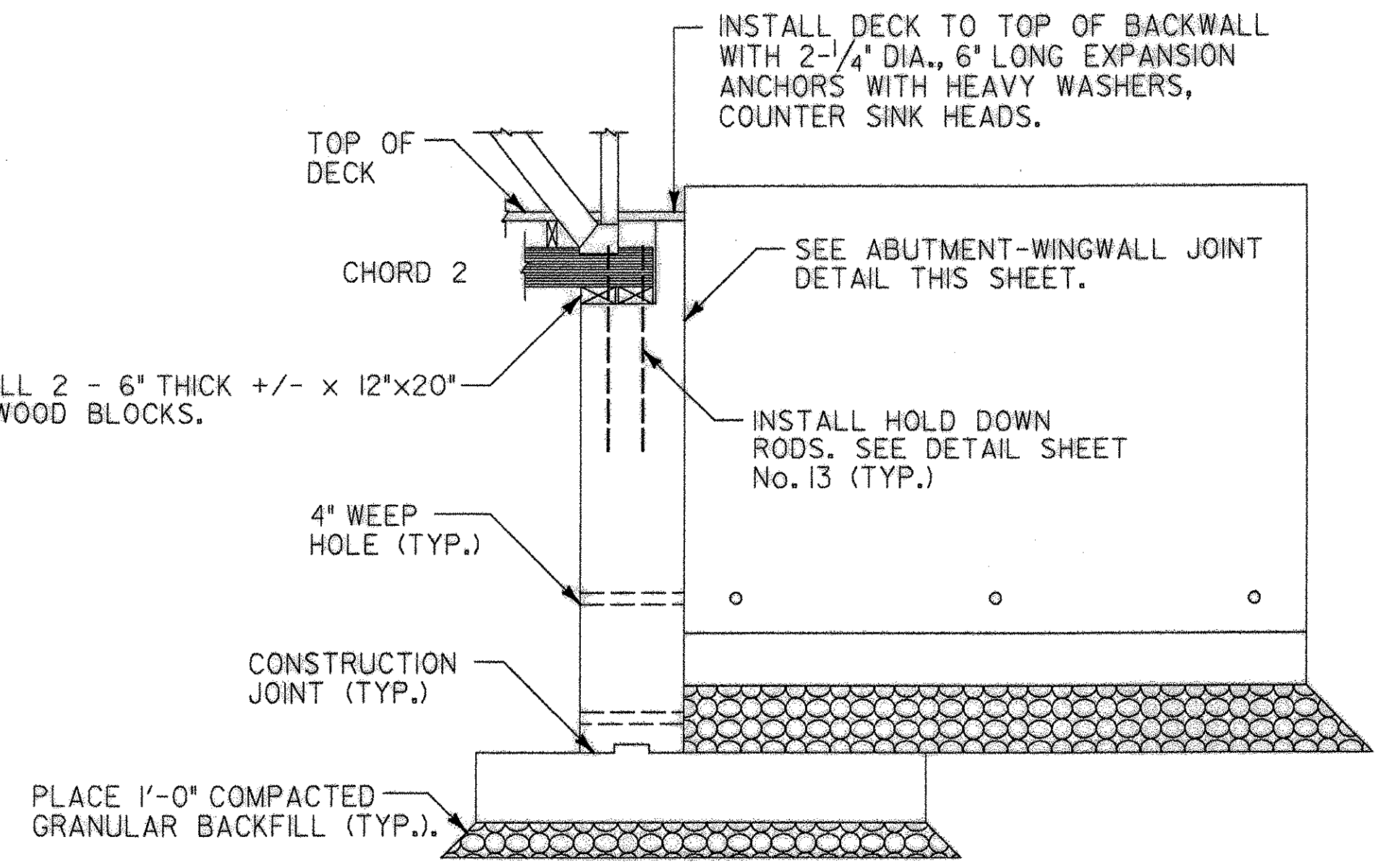
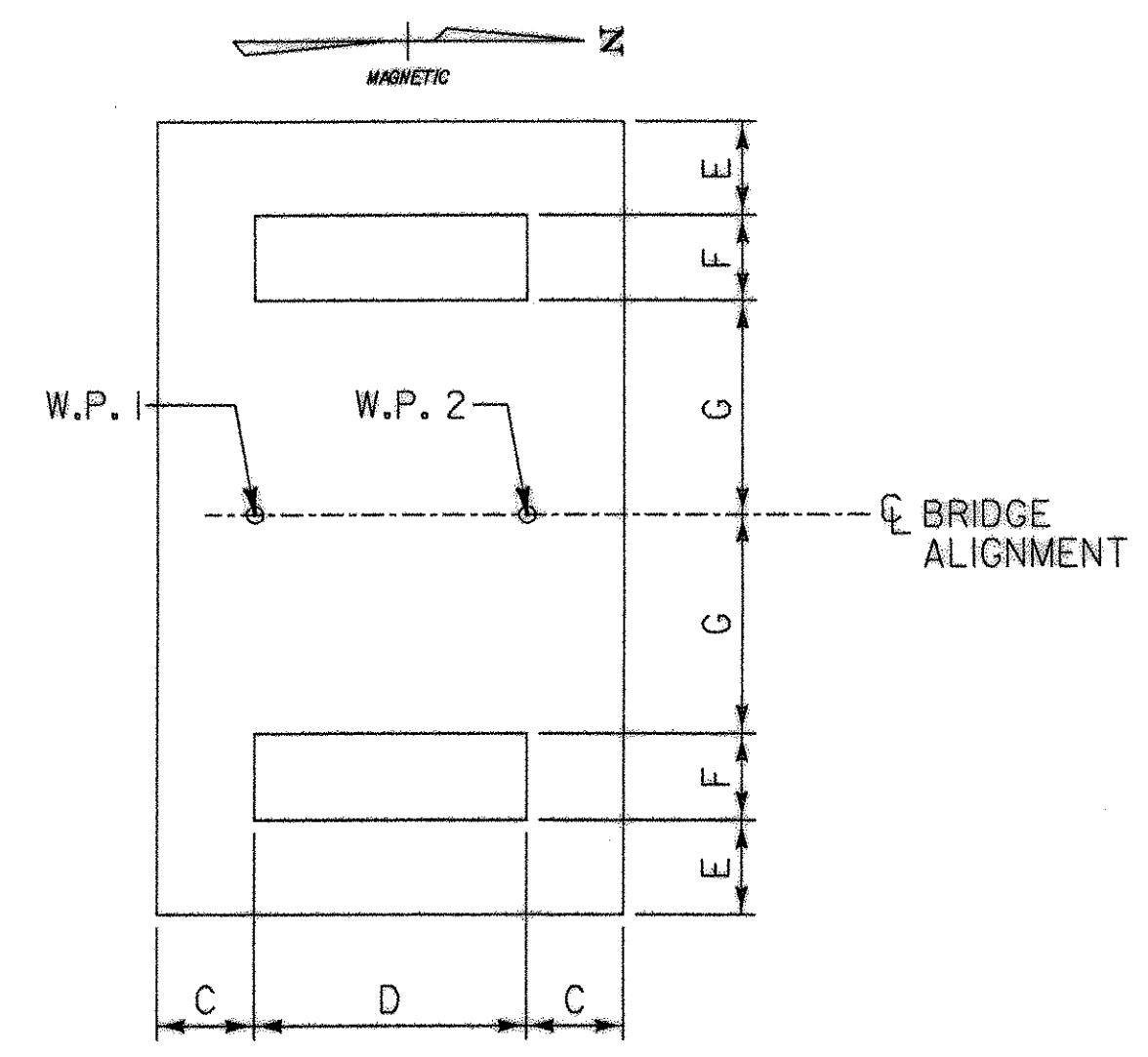


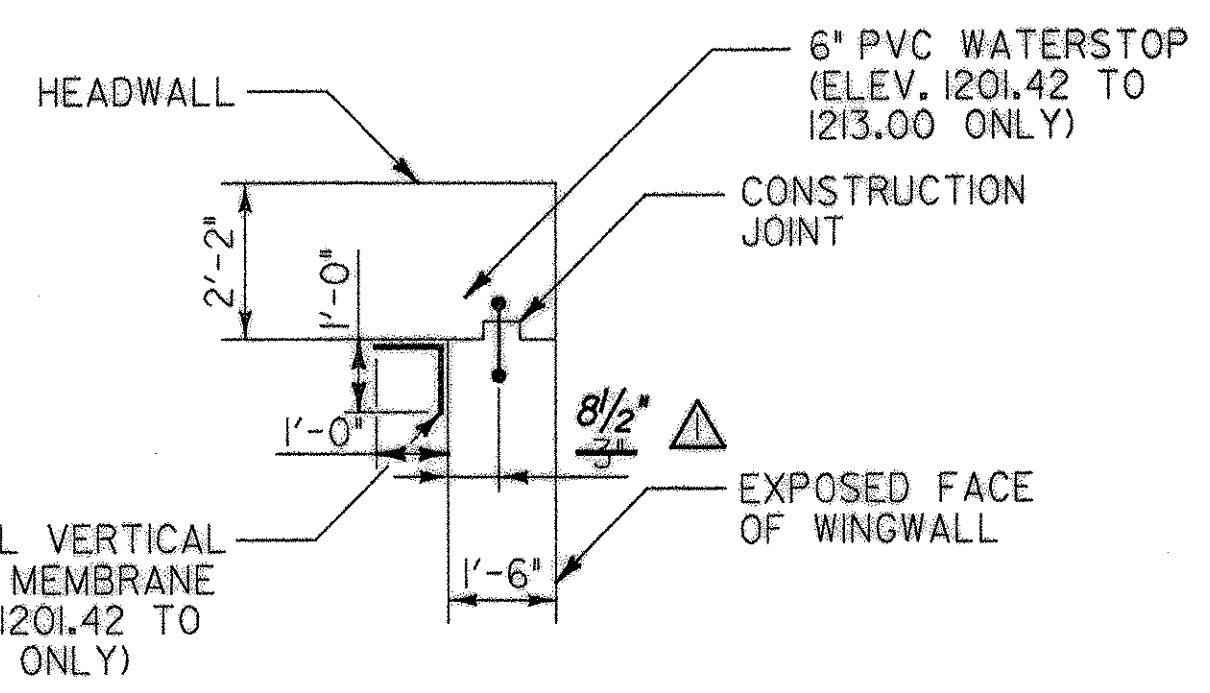
ABUTMENT No. 1 PLAN
SCALE 1/4" = 1'-0"



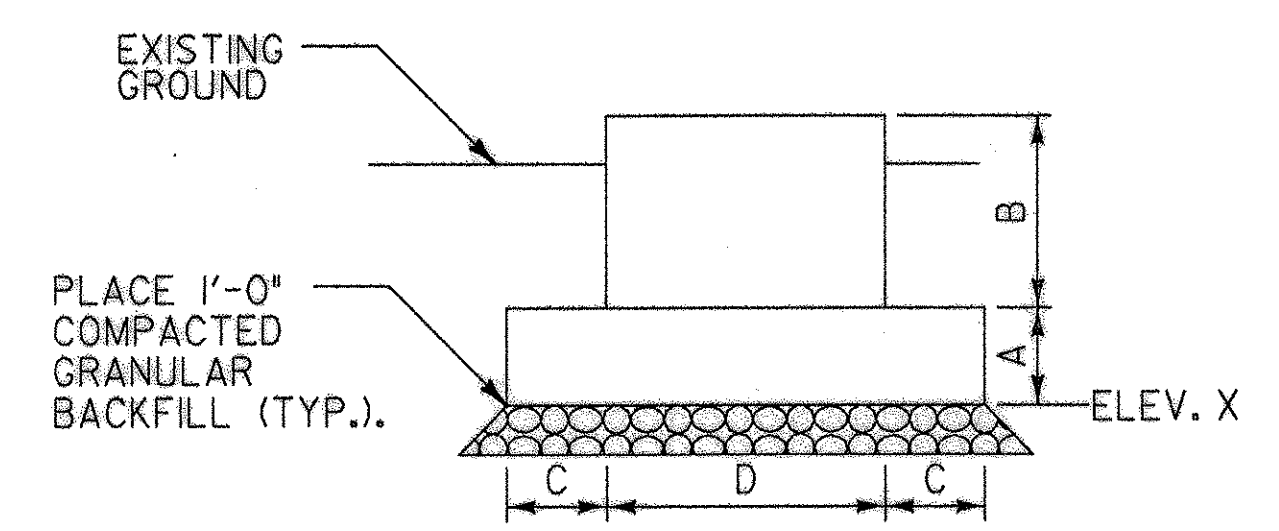
SECTION A-A
SCALE 1/4" = 1'-0"



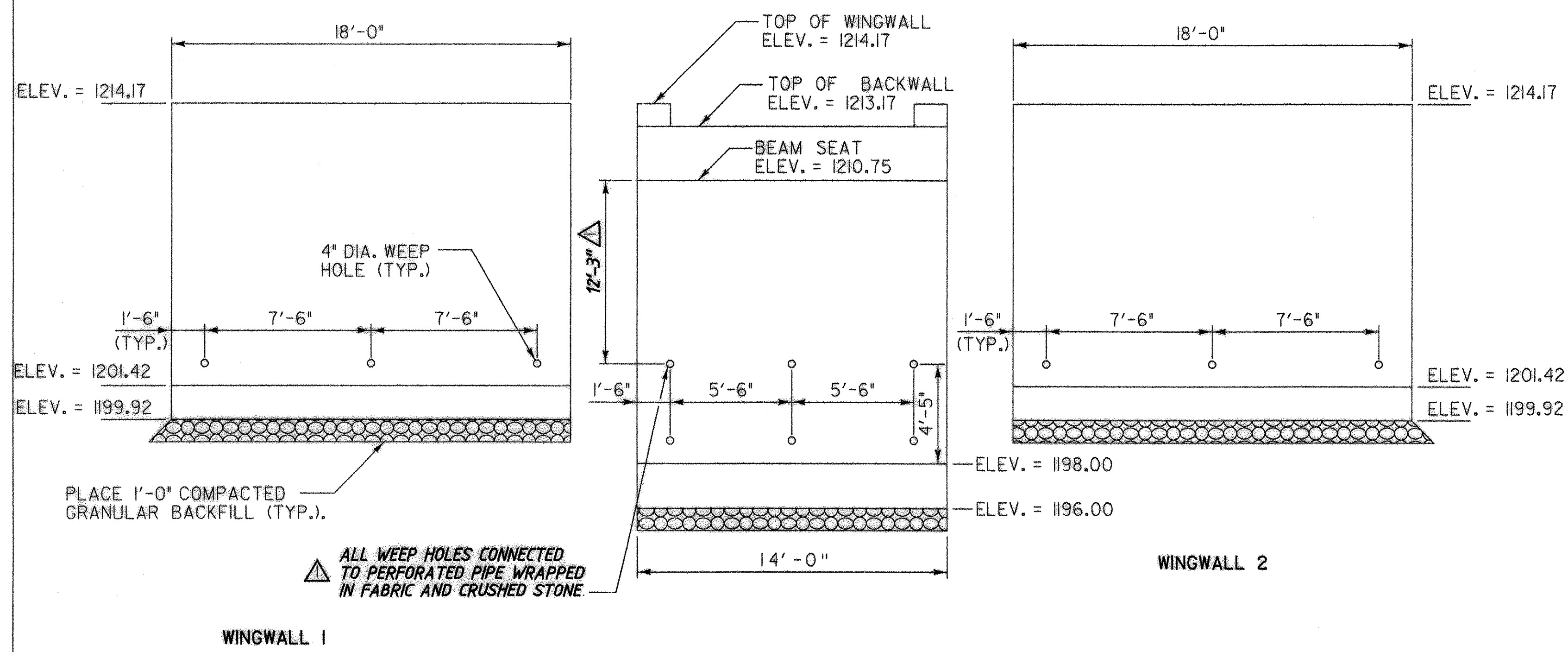
TYPICAL PIER FOOTING PLAN
SCALE 1/4" = 1'-0"



ABUTMENT-WINGWALL JOINT DETAIL
SCALE 3/8" = 1'-0"



TYPICAL PIER FOOTING ELEVATION
SCALE 1/4" = 1'-0"



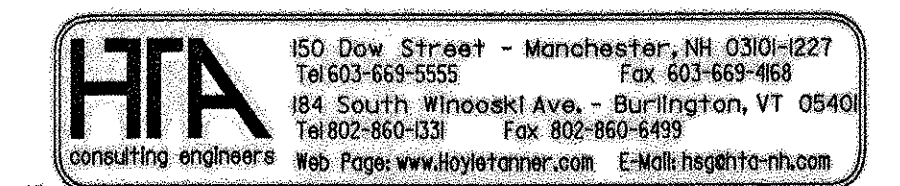
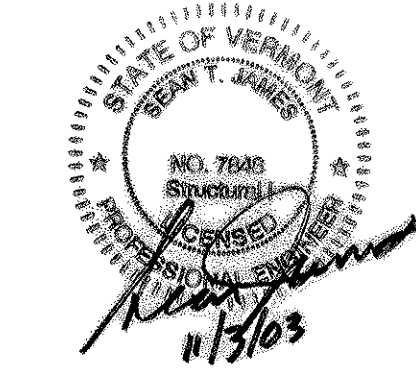
ABUTMENT No. 1 ELEVATION
SCALE 1/4" = 1'-0"

NOTE: PVC WATERSTOP AND SHEET MEMBRANE ARE SUBSIDIARY TO ITEM 501.25. REINFORCING STEEL SHALL BE CONTINUOUS THROUGH JOINT. TOP W501BARS MAY BE CUT IN THE FIELD TO FIT.

PIER FOUNDATION TABLE										
LOCATION	A	B	C	D	E	F	G	ELEV. X	WP #/STA.	WP #2 STA.
PIER 1	2'-0"	4'-0"	2'-1"	5'-10"	2'-0"	1'-10"	4'-8"	1182.00	1+15.75	1+21.58
PIER 2	2'-0"	4'-0"	2'-1"	5'-10"	2'-0"	1'-10"	4'-8"	1182.00	1+34.50	1+40.33
PIER 3	4'-6"	4'-0"	2'-1"	5'-10"	3'-10"	1'-10"	4'-4"	1179.50	1+53.25	1+59.08

PLAN NOTES:

- ABUTMENT NO. 1 SHALL HAVE AN APPROVED FORM LINER USED ON ALL OUTSIDE FACES OF THE ABUTMENT TO PROVIDE A STONE/ASHLAR FINISH. THE FORM LINER SHALL EXTEND TO A MINIMUM DEPTH OF ONE FOOT BELOW EXISTING GRADE. THE CONTRACTOR SHALL SUBMIT THE PROPOSED FORM LINER TO THE ENGINEER FOR APPROVAL.
- THE PIER FOOTINGS SHALL BE BACKFILLED PRIOR TO INSTALLATION OF THE TIMBER PIER MEMBERS.
- SEE SHEET 8 FOR STRINGER BEARING PAD DETAILS.
- A CULTURED STONE FACING, MANUFACTURED BY OWENS CORNING (PRODUCT NUMBER CSU-2025, GRAY COBLE FIELD) WAS ADDED TO THE ABUTMENT IN LIEU OF A FORM LINER.



RECORD COPY REVISIONS		DR BY	CHK BY
		JDG	STJ
Town Of	BRIGHTON	Bridge No.	
Highway No.		Log Sta.	
BRIGHTON PEDESTRIAN BRIDGE			
SUBSTRUCTURE DETAILS (1 OF 2)			
Designed By	S.T. JAMES	Drawn By	W.A. DRUDING
Checked By	R.H. DURFEE	Date	MAY 2002
PROJECT	BRIGHTON	PROJECT NO.	STP BIKE (14)S
I.G.C. Info.	Z9068CF.dgn	Bridge Sheet No.	5
		Sheet	5 of 14