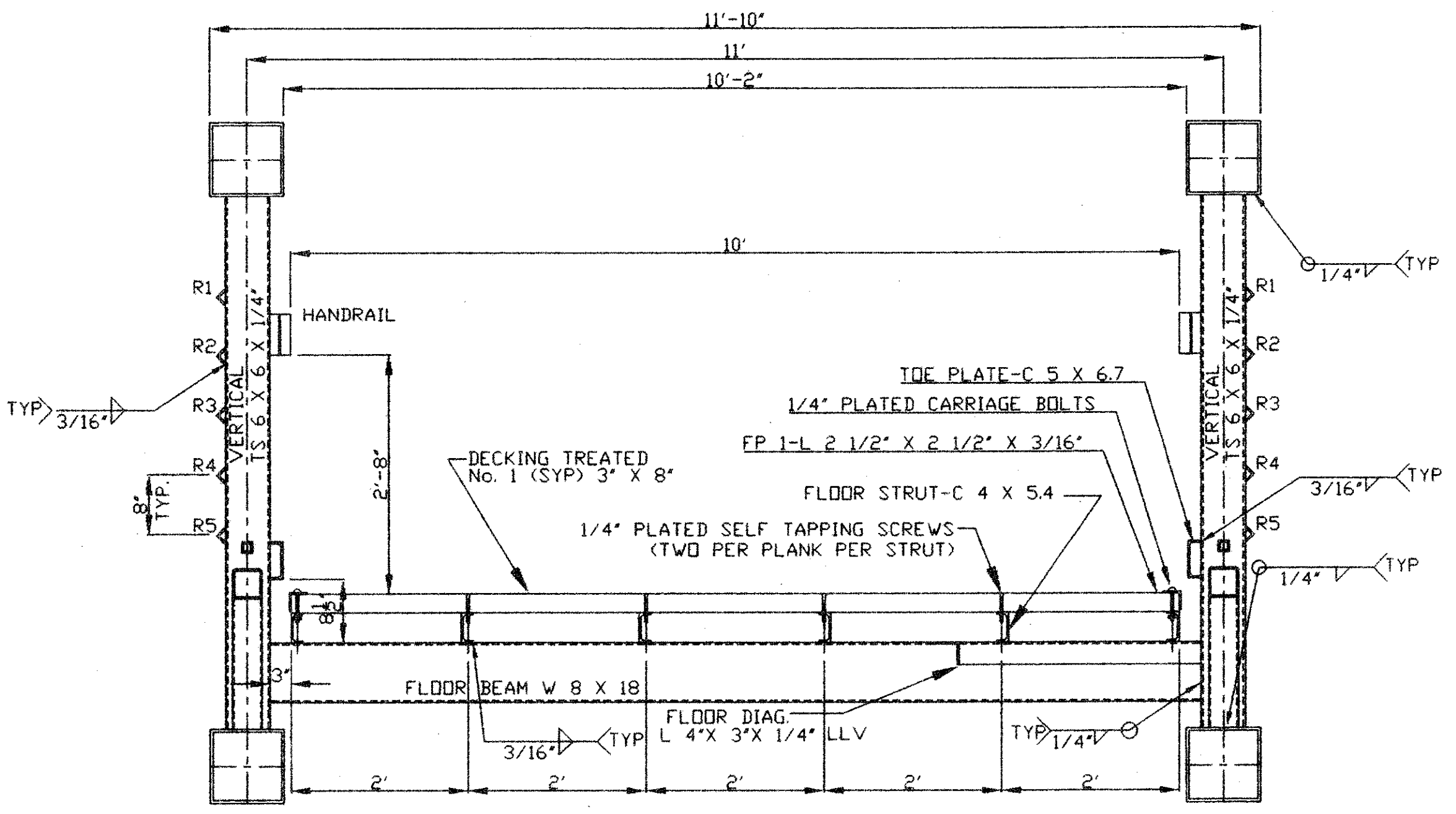


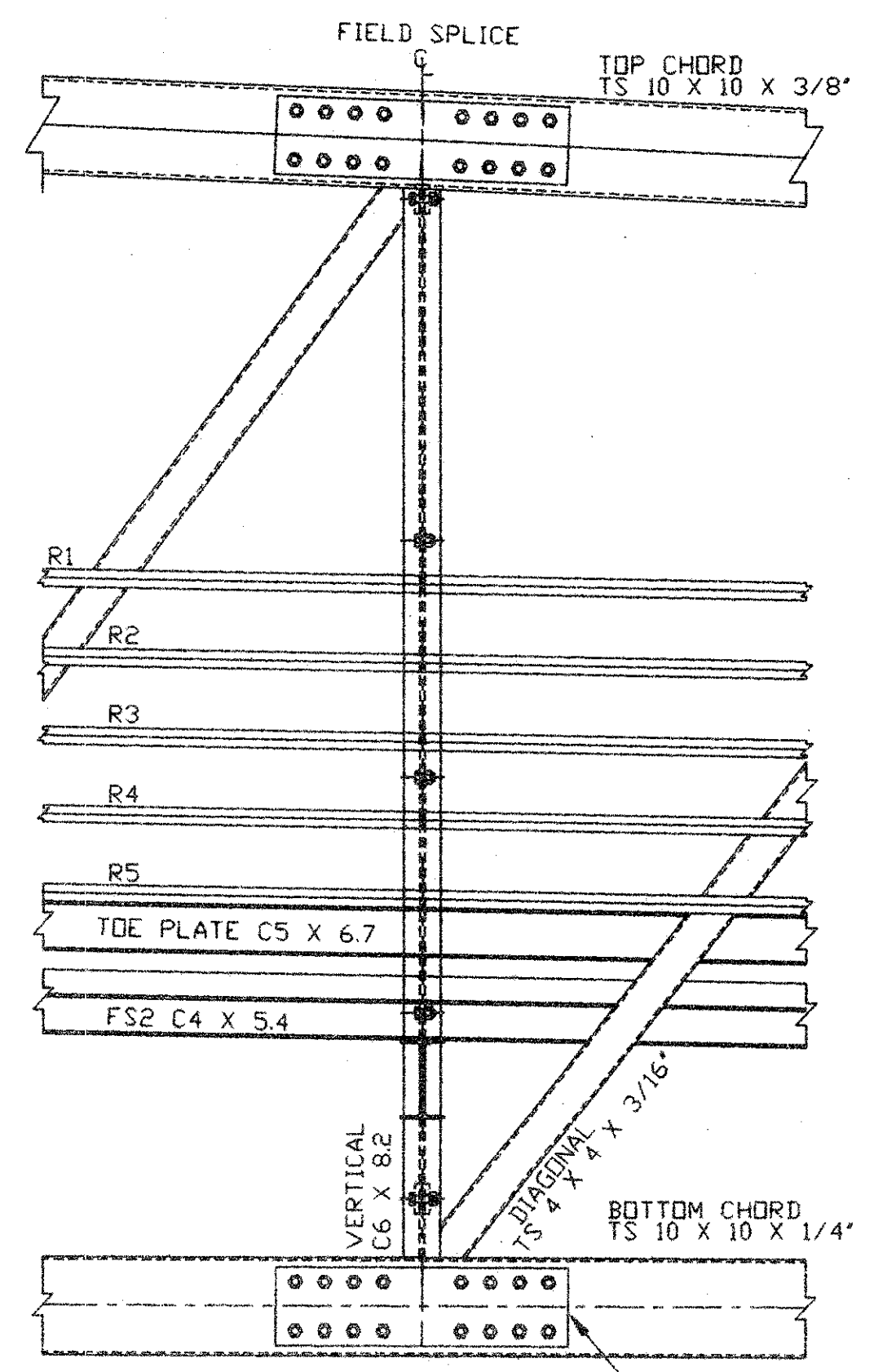
ELEVATION

3/4" = 1'



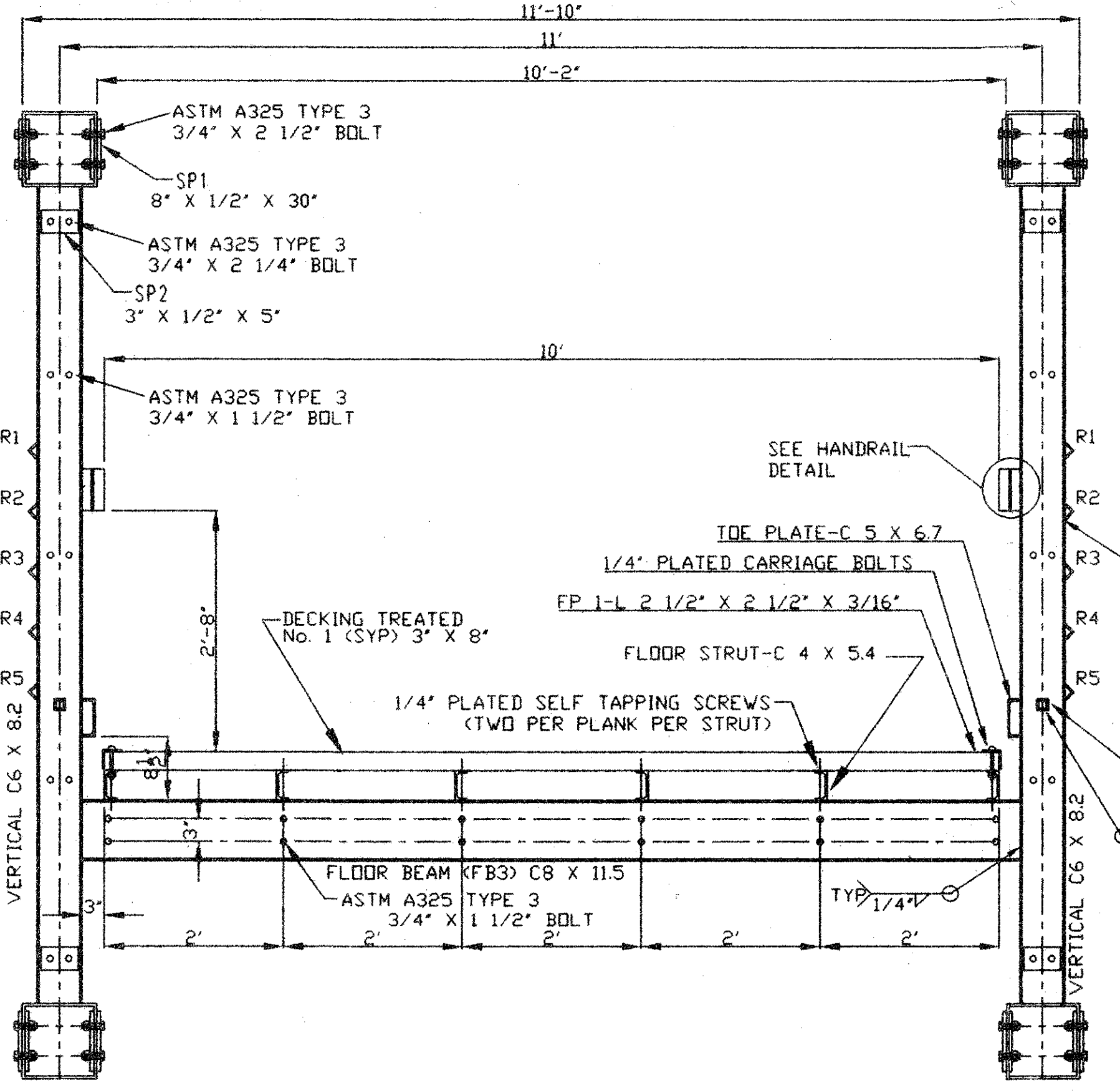
SECTION A-A

3/4" = 1'



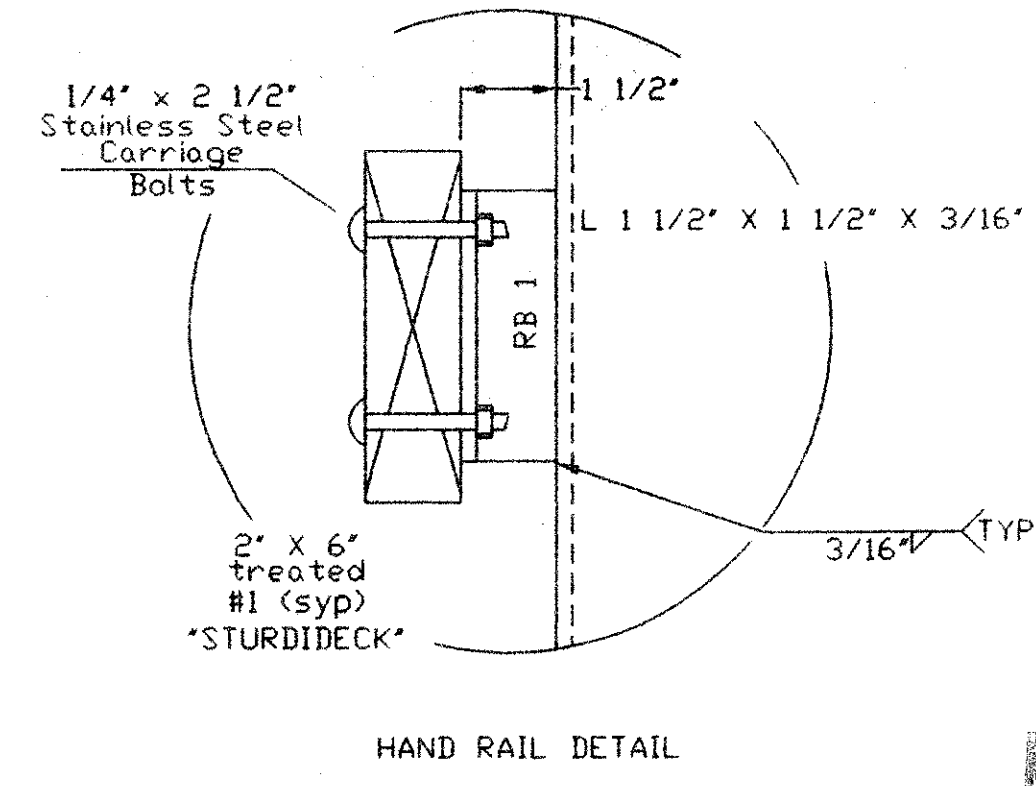
ELEVATION AT SPLICE

3/4" = 1'



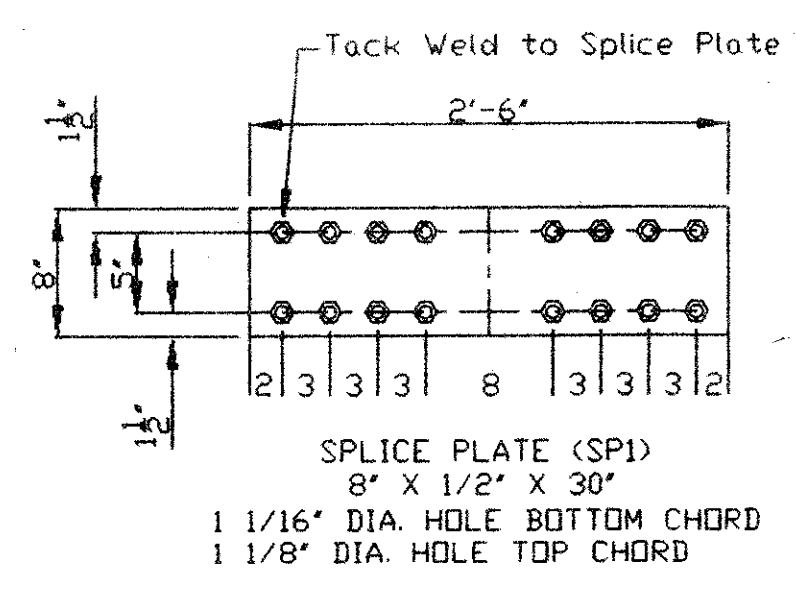
SECTION B-B AT SPLICE

3/4" = 1'



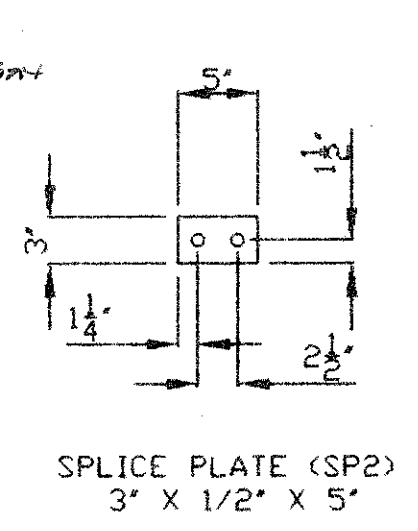
HAND RAIL DETAIL

APPROVAL ONLY



SPLICE PLATE (SP1)

Date Received 1/22/98  
 Approved  Revise & Resubmit  
 Approved as noted  Not Approved  
 Comments: SEE LETTER TO D. PETERSON  
 DATED 1/28/98  
 PINKHAM ENGINEERING ASSOCIATES INC.  
 Reviewed By: DRL Checked By: [Signature]  
 Date: 1/28/98 Signed: [Signature]



SPLICE PLATE (SP2)

**STEADFAST BRIDGES**  
 A DIVISION OF BILTOLAST PRODUCTS INC.  
 119 40th St. NE FORT PAYNE, AL 35967-8139  
 1-800-749-7515

ACTIVE MEMBER

**BILL OF MATERIALS**

JOB: 97825 FOR: MONTPELIER, VERMONT  
 Steel ASTM A588, (WX) A847, A606 (TS)

no. mark	DESCRIPTION	FEET	inches	weight per/foot	TOTAL	TOTAL LENGTH	
4 TC 1	TS 10"x 10" x 3/8"	6	1 1/2"	47.90	1174	25	
4 TC 2	TS 10"x 10" x 3/8"	58	11"	47.90	11288	236	
2 TC 3	TS 10"x 10" x 3/8"	58	4"	47.90	5588	117	
4 BC 1	TS 10"x 10" x 1/4"	57	11"	32.63	7559	232	
2 BC 2	TS 10"x 10" x 1/4"	58	3 7/8"	32.63	3806	117	
2 FB 1	TS 10"x 10" x 1/4"	10	2"	32.63	663	20	
20 FB 2	W 8 x 18	10	6"	18.00	3780	210	
2 EX 1	L 2 1/2" x 3/16"	9	11"	3.77	75	20	
4 FB 3	C 8" x 11.5	10	6"	11.50	483	42	
2 FD 1	L 4" x 3" x 1/4"	12	1"	5.80	140	24	
22 FD 2	L 4" x 3" x 1/4"	12	2"	5.80	1552	268	
4 FS 1	C 4 x 5.4	175	10"	5.40	3798	703	
2 FS 2	C 4 x 5.4	175	10"	5.40	1899	352	
2 FP 1	L 2 1/2" x 3/16"	175	10"	3.07	1080	352	
2 D2	TS 6" x 4" x 1/4"	7	11"	15.62	247	16	
4 D3	TS 4" x 4" x 1/4"	8	6 5/16"	12.21	415	34	
4 D4	TS 4" x 4" x 1/4"	9	0 1/4"	12.21	440	36	
4 D5	TS 4" x 4" x 1/4"	9	6"	12.21	464	38	
4 D6	TS 4" x 4" x 1/4"	9	11 7/16"	12.21	488	40	
4 D7	TS 4" x 4" x 1/4"	10	4 3/8"	12.21	501	41	
4 D8	TS 4" x 4" x 1/4"	10	8 13/16"	12.21	525	43	
4 D9	TS 4" x 4" x 1/4"	11	5 5/16"	12.21	537	44	
4 D10	TS 4" x 4" x 1/4"	11	4 7/16"	12.21	550	45	
4 D11	TS 4" x 4" x 1/4"	11	6 5/16"	12.21	562	46	
4 D12	TS 4" x 4" x 1/4"	11	8 1/8"	12.21	574	47	
4 D13	TS 4" x 4" x 1/4"	11	9 3/16"	12.21	574	47	
3/4"	4 V2	TS 6" x 6" x 1/4"	5	2 9/16"	19.02	397	21
11/16"	4 V3	TS 6" x 6" x 1/4"	5	11 7/8"	19.02	456	24
5/8"	4 V4	TS 6" x 6" x 1/4"	6	8 5/16"	19.02	509	27
1/2"	4 V5	TS 6" x 6" x 1/4"	7	3 7/8"	19.02	557	29
7/16"	4 V6	TS 6" x 6" x 1/4"	7	10 7/8"	19.02	602	32
3/8"	4 V7	TS 6" x 6" x 1/4"	8	4 1/4"	19.02	636	33
5/16"	4 V8	TS 6" x 6" x 1/4"	8	9 1/16"	19.02	666	35
3/16"	8 V9	C 6" x 8.2	9	1"	8.20	596	73
3/16"	4 V10	TS 6" x 6" x 1/4"	9	4 1/8"	19.02	711	37
1/8"	4 V11	TS 8" x 6" x 1/4"	9	6 5/16"	22.42	854	38
1/16"	4 V12	TS 6" x 6" x 1/4"	9	7 9/16"	19.02	733	39
0"	4 V13	TS 8" x 6" x 1/4"	9	8"	22.42	867	39
10 R1-R5	L 1 1/2" x 3/16"	175	10"	1.80	3165	1758	
2 PROT.	1 1/2" SQ TUBE	151	9"	2.25	683	0	
0 RB	RAIL BRACKETS	0	0"	0.00	0	0	
60 RB	L 1 1/2" x 3/16"	0	5"	1.80	45	0	
4 BP 1	PL 11" x 1/2"	1	2"	20.42	95	0	
4 BP 2	PL 11" x 1/2"	1	2"	20.42	95	0	
32 SP 1	PL 8" x 1/2" +A588	2	6"	20.42	1634	0	
16 SP 2	PL 3" x 1/2" +A588	0	5"	20.42	136	0	
141	PLATED CARRIAGE BOLTS 1/4"	0	3 1/2"	0.22	9	41	
2329	SELF TAPPING SCREWS	0	3 1/2"	0.21	143	679	
4 FRIC	ONLESS PADS 9" x	1	0"	0.00	0	4	
24 CONN.	BOLT ASTM 325 3/4"	0	1 1/2"	0.00	12	3	
16 CONN.	BOLT ASTM 325 3/4"	0	2 1/4"	0.00	10	3	
336 CONN.	BOLT ASTM 325 1"	0	2 1/2"	0.00	437	70	
2 TOE PL	C 5" x 6.7	176	1 5/8"	6.70	2360	352	
				TOTAL	65171		
291 NO. 1	TREATED (SYP) 3 x 8"	10	0"	6.04	17432	0	
2 RAILS	TREATED 2" x 6"	175	10"	2.75	967	352	
				TOTAL LIFTING WEIGHT	83570		

REV	DESCRIPTION	BY/DATE
B		
A		
REV	DESCRIPTION	BY/DATE

PLACARD ATTACHED ON RIGHT END POST AT EACH END OF BRIDGE

STEADFAST BRIDGES  
 PEDESTRIAN TRAFFIC LIGHT VEHICLE  
 MAXIMUM LOAD  
 5 TONS

BILTOLAST PRODUCTS INC  
 FORT PAYNE, ALABAMA  
 DATE OF MANUFACTURE: [ ]  
 SERIAL #: [ ]

JOB: 10' x 175' 'CAPSTONE'  
 FOR: STATE OF VERMONT  
 ADDRESS: WINDOSKI RIVER WEST BIKE TRAIL  
 WASHINGTON CO.  
 CITY OF MONTPELIER  
 ARCHITECT: P.E.A. INC.  
 CONTRACTOR: WINCO, INC.  
 DRAWN BY: 1/02/98 C.D.  
 CHECKED/BY: [ ]  
 JOB#: 97825 SHEET: 2 OF 2

THIS BRIDGE STRUCTURE SHALL NOT BE FIELD MODIFIED IN ANY WAY WITHOUT PRIOR APPROVAL FROM THE ENGINEERING DEPT. OF STEADFAST BRIDGES. THESE DRAWINGS AND DESIGNS ARE THE PROPERTY OF BILTOLAST PRODUCTS INC. AND ARE NOT TO BE COPIED WITHOUT THEIR WRITTEN CONSENT