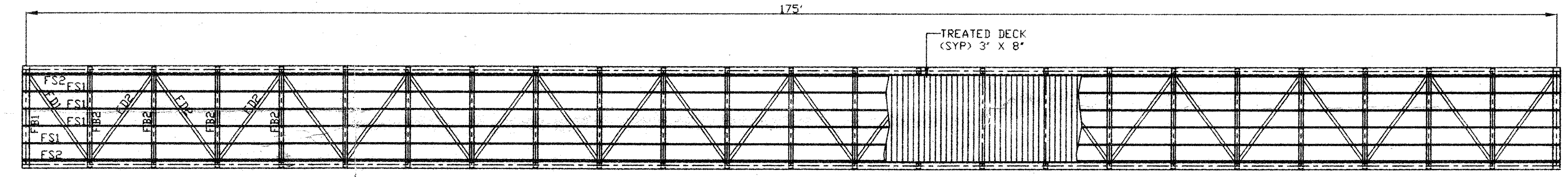
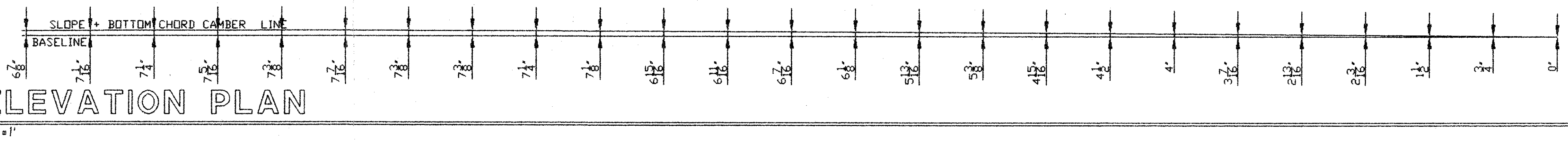
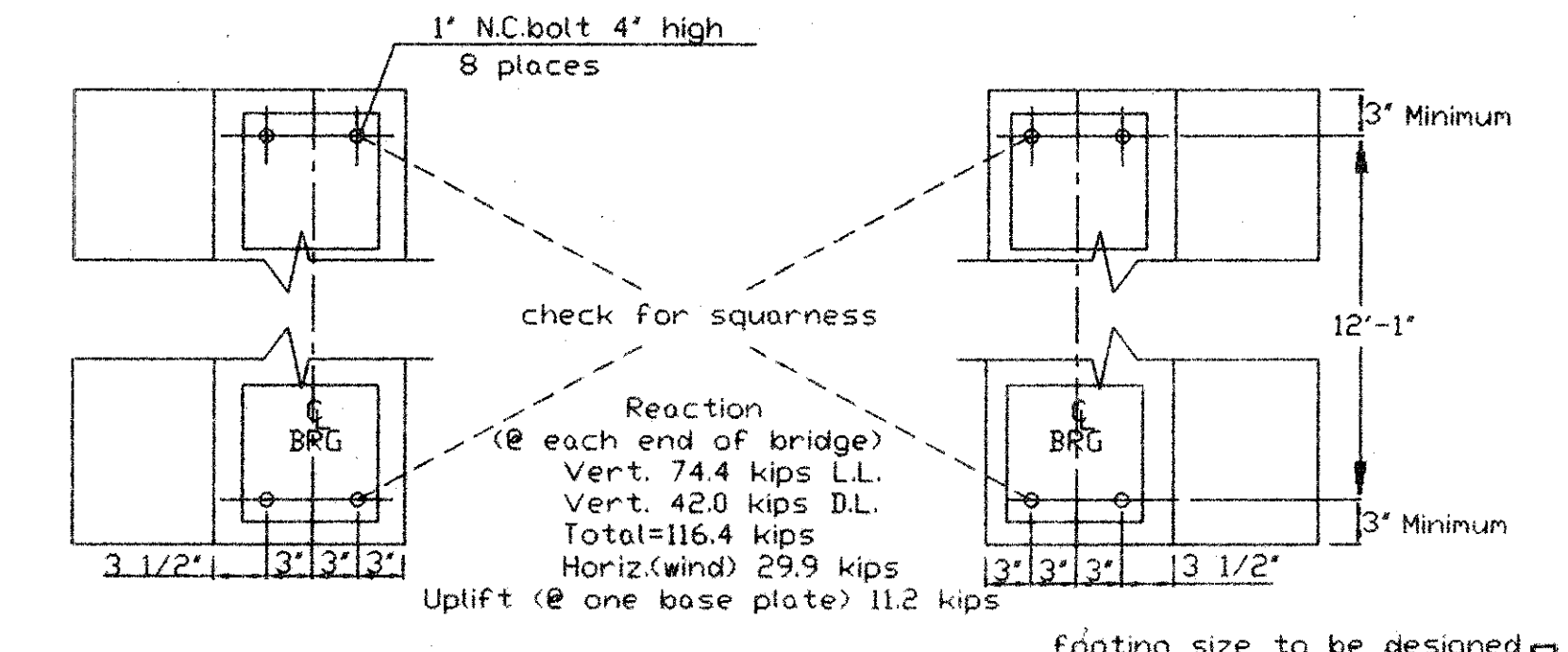
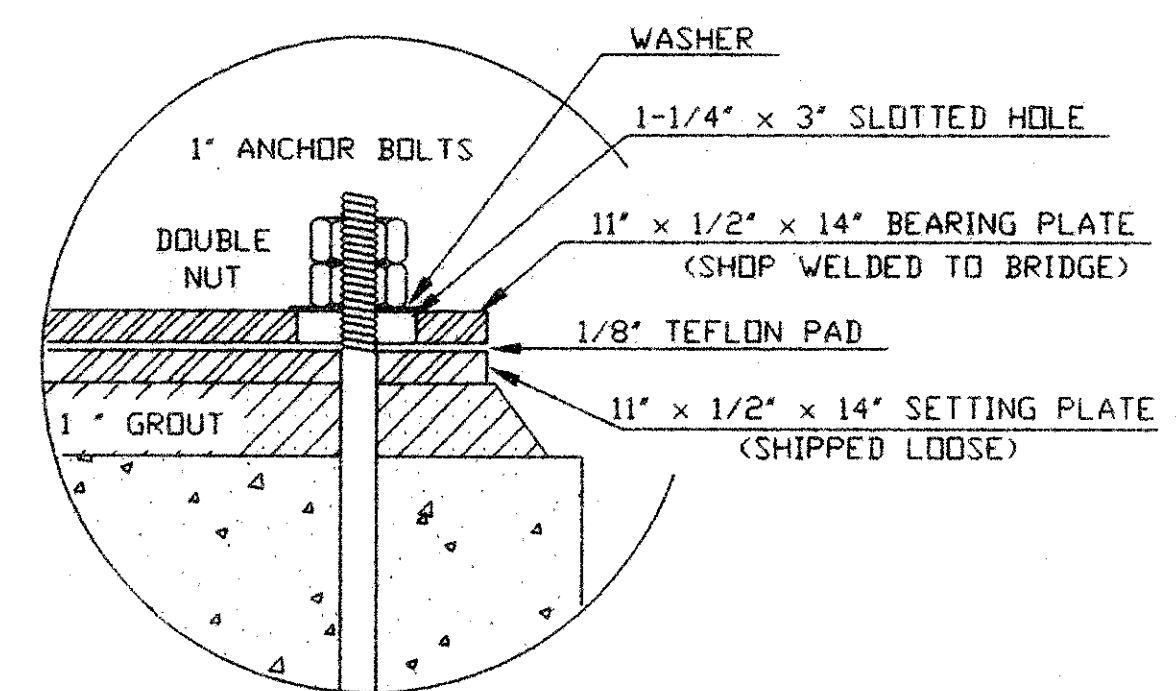


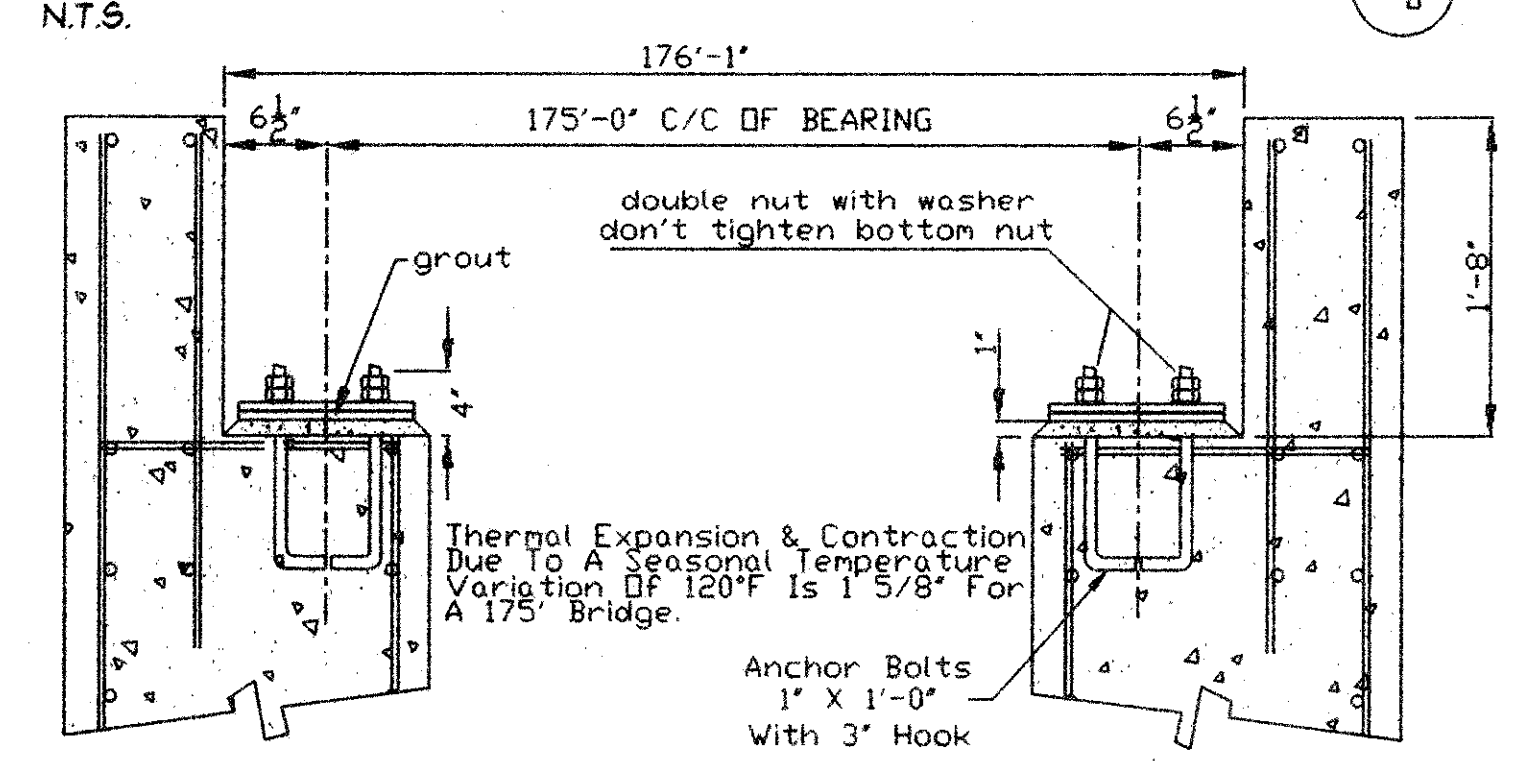
**ELEVATION PLAN**



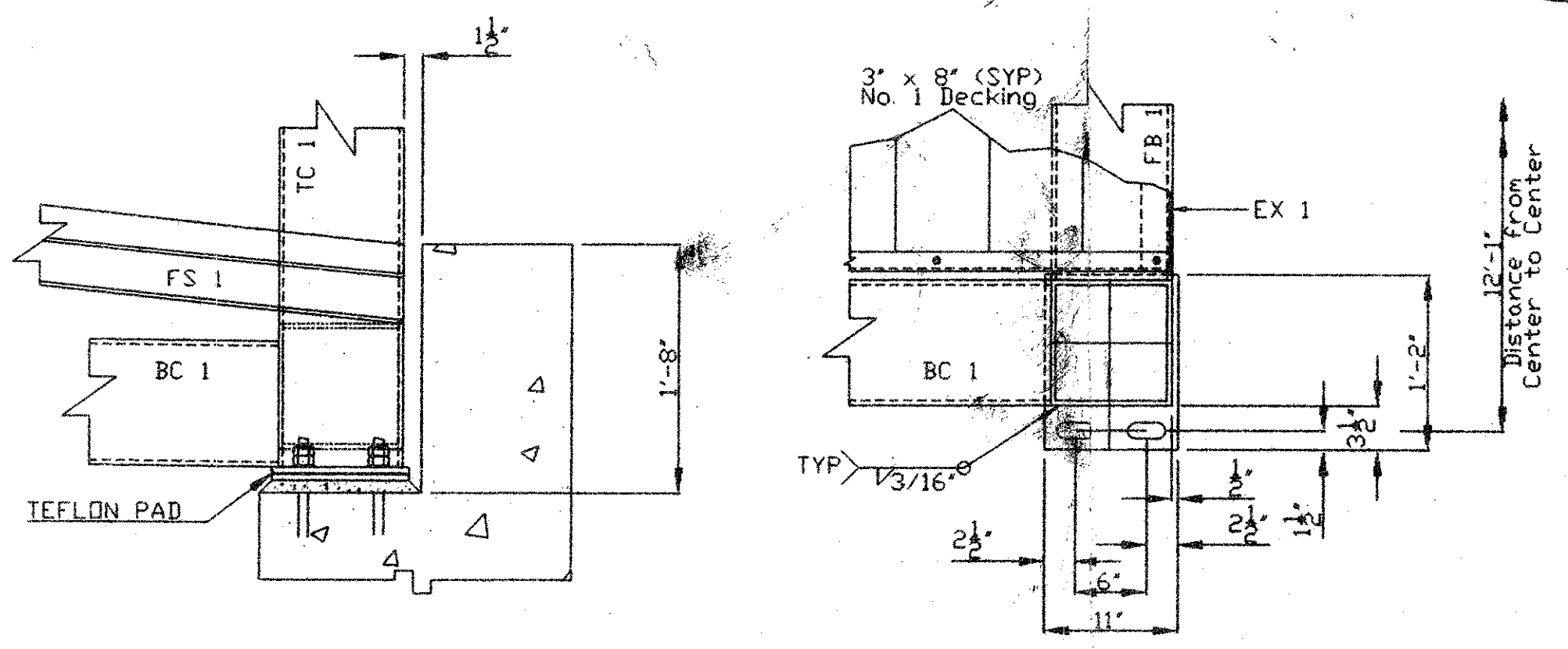
**FLOOR PLAN**



**ABUTMENT PLAN**



**ABUTMENT SECTION**



**BEARING ASSEMBLY**

**STEADFAST BRIDGES**  
 A DIVISION OF BILTOLAST PRODUCTS INC.  
 119 40th St. NE FORT PAYNE, AL 35967-8139  
 1-800-749-7515

AMERICAN INSTITUTE OF STEEL CONSTRUCTION  
 FOUNDED 1914  
**ACTIVE MEMBER**

**BILL OF MATERIALS**  
 JOB: 97825 FOR: MOUNTPELIER, VERMONT

Steel ASTM A588, (WX) A847, A606 (TS)

shop no. mark	DESCRIPTION	FEET	inches	weight per/foot	TOTAL LENGTH
---------------	-------------	------	--------	-----------------	--------------

- GENERAL NOTES**
- All design stresses are in accordance with the specification of THE AMERICAN INSTITUTE OF STEEL CONSTRUCTION.
  - Welding to conform with the AMERICAN WELDING SOCIETY D1.1 & D1.5 latest revision. Welding to be performed by experienced welders qualified in accordance with A.W.S. procedures. Welding electrodes to be ASTM E-80XX series.
  - All steel to be ASTM A-588, A-847 or ASTM A-606 'WEATHERING' steel with a minimum yield of 50,000 pounds per square inch.
  - Welds will be a minimum of 3/16" fillet unless shown otherwise.
  - Anchor bolts to be ASTM A-307 or threaded A-36 steel rods. Nuts on anchor bolts should be loosely 'hand tightened' so as to allow the bearing plates to slide on the setting plates or teflon pads, if called for. Place setting plate & teflon pads on shims, set bridge, and then grout under setting plates. (IF REQUIRED) Field connections bolts shall be ASTM A-325 or A-490 and shall be tight by the turn of the nut method to obtain proper torque.)
  - Exposed steel surfaces to be sandblasted to STEEL STRUCTURES PAINTING COUNCIL #6 'commercial sandblast finish'. After cleaning, care shall be taken to keep surfaces free of oil, grease, concrete and any foreign matter to allow the weathering steel to rust evenly.
  - All wood to be #1 southern yellow pine with a CCA preservative treatment to .4 pounds retention of preservative per cubic foot.
  - Hand rails and all other accessible surfaces to be ground smooth with no sharp edges or corners.
  - Location of anchor bolts and foundation details are for general arrangement purposes only. Actual foundation and substructure design, electrical grounding, and clearances (flood plain, roadway, and waterway) are the responsibility of others.

THIS BRIDGE IS DESIGNED BASED ON THE FOLLOWING CRITERIA.  
 (1) Dead load of 48 psf plus an evenly distributed live load of 85 psf.  
 (2) Dead load + concentrated load of 1,000 pounds/foot of width + impact.  
 (3) Wind load (approx. 120 mph.) calculated on the entire vertical surface as though fully enclosed.

**APPROVAL ONLY**  
 RECEIVED  
 JAN 13 1998  
 E.S. SCHAFFER

REV	DESCRIPTION	BY/DATE
B		
A		

PLACARD ATTACHED ON RIGHT END POST AT EACH END OF BRIDGE

JOB: 10' x 175' 'CAPSTONE'  
 FOR: STATE OF VERMONT  
 ADDRESS: WINDOSKI RIVER WEST BIKE TRAIL  
 WASHINGTON CO.  
 CITY OF MOUNTPELIER

ARCHITECT: P.E.A. INC.  
 CONTRACTOR: WINCO, INC.  
 DRAWN/BY: 12/31/97 C.D.  
 CHECKED/BY:  
 JOB#: 97825 SHEET: 1 OF 2

THIS BRIDGE STRUCTURE SHALL NOT BE FIELD MODIFIED IN ANY WAY WITHOUT PRIOR APPROVAL FROM THE ENGINEERING DEPT. OF STEADFAST BRIDGES.  
 THESE DRAWINGS AND DESIGNS ARE THE PROPERTY OF BILTOLAST PRODUCTS INC. AND ARE NOT TO BE COPIED WITHOUT THEIR WRITTEN CONSENT

134

Date Received: 1/22/98  
 Approved  
 Revise & Resubmit  
 Approved as noted  
 Not Approved

Comments: SEE LETTER TO D. P. PATTEN  
 DATED: 1/28/98

REVIEWED APPROVED BY THE ENGINEER AND THE CONTRACTOR AND IN RESPONSE TO THE COMMENTS AND INPUT OF THE ARCHITECT AND THE STATE OF VERMONT. THE CONTRACTOR ACCEPTS RESPONSIBILITY FOR CONFORMANCE WITH THE PLANS & SPECIFICATIONS AT THE INTENT OF THE CONTRACT.

PINKHAM ENGINEERING ASSOCIATES INC.  
 Reviewed By: DEH Checked By: [Signature]  
 Date: 1/24/98 Signed: [Signature]

ROBERT G. GRAHAM, III  
 REGISTERED PROFESSIONAL ENGINEER  
 STATE OF VERMONT  
 1/8/98