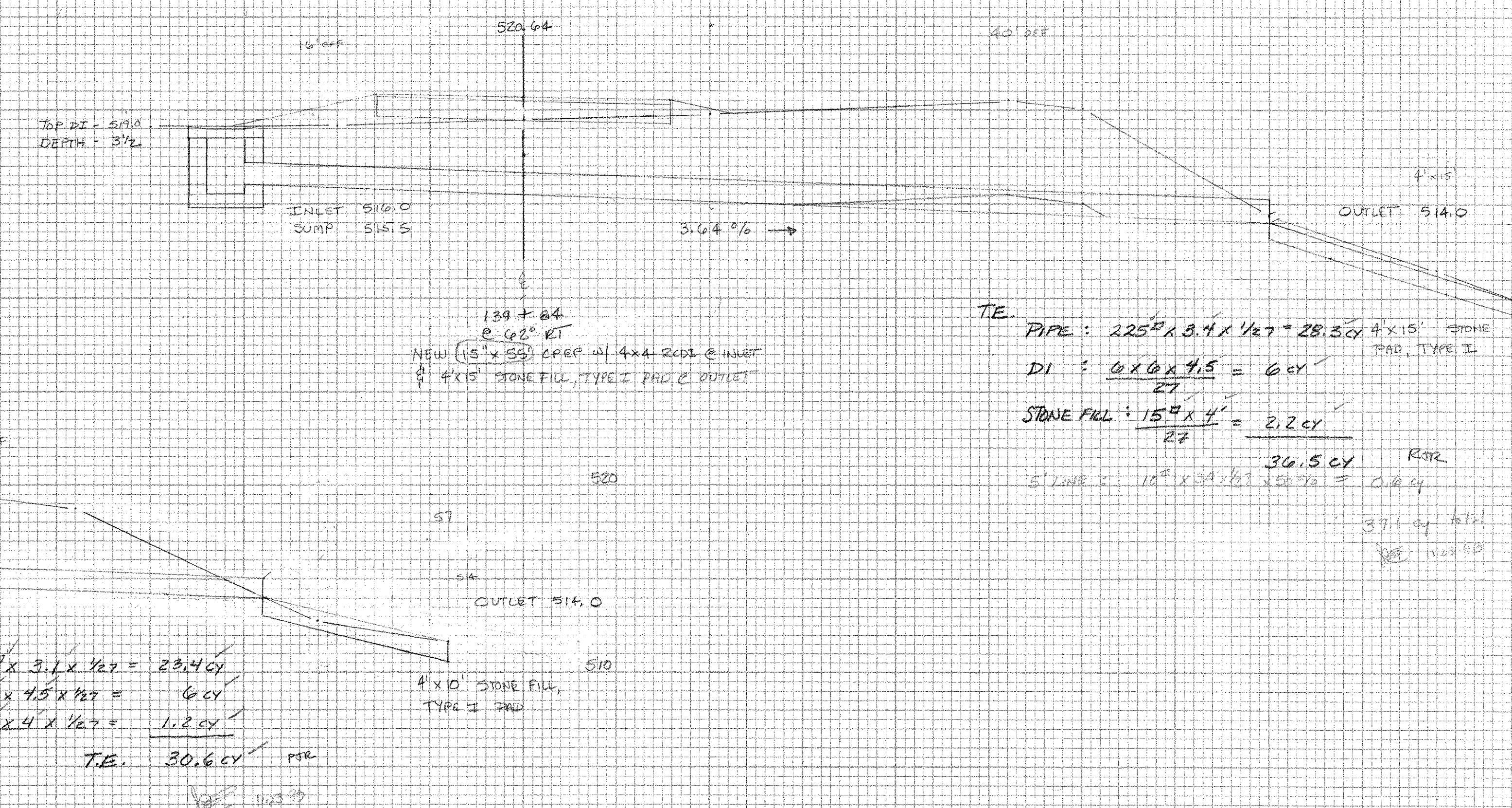
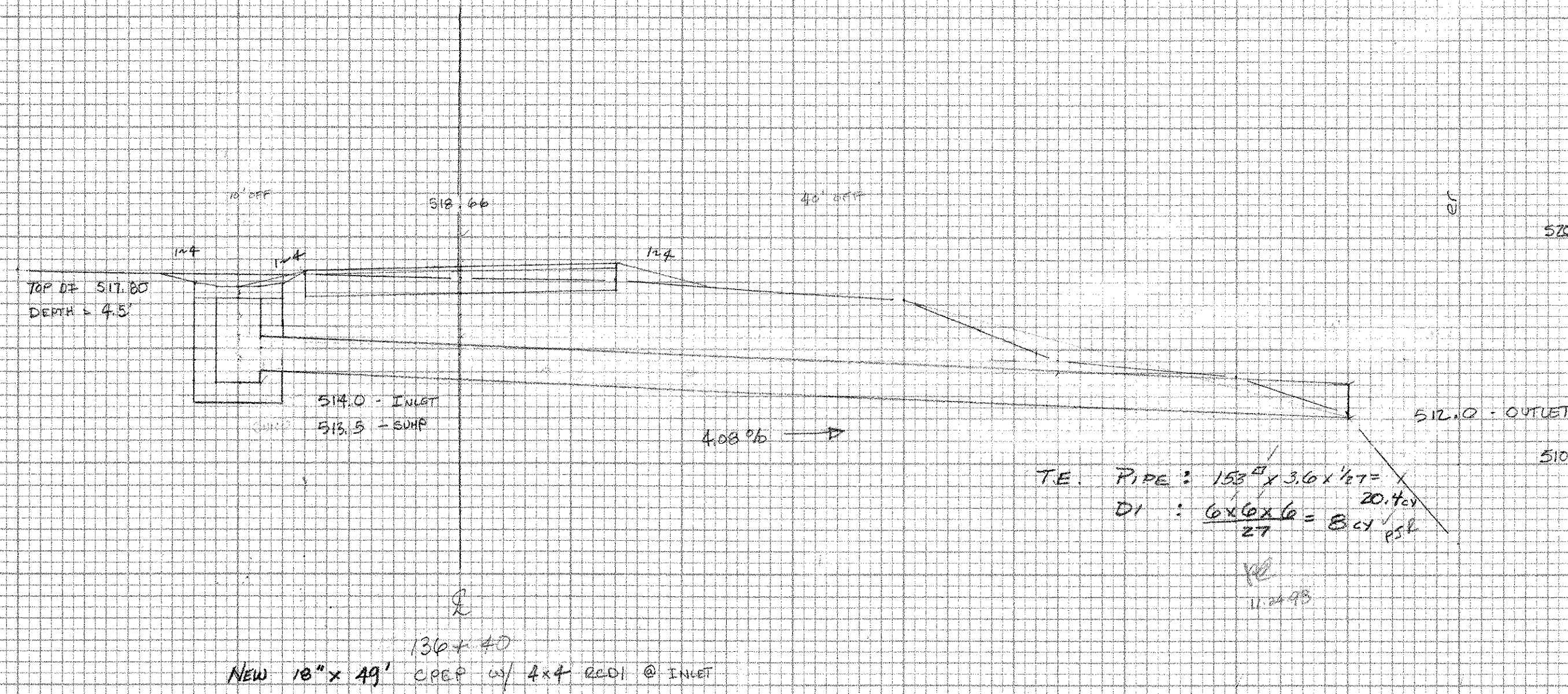


NO.	DATE	BY	REVISION
1	11/24/95	...	...

NO.	DATE	BY	REVISION
1	11/24/95	...	...



$TE. \text{ PIPE: } 225'' \times 3.4 \times \frac{1}{27} = 28.3 \text{ CY}$  STONE PAD, TYPE I  
 $DI: \frac{6 \times 6 \times 4.5}{27} = 6 \text{ CY}$   
 $\text{STONE PAD: } \frac{15'' \times 4'}{27} = 2.2 \text{ CY}$   
 $T.E. 36.5 \text{ CY}$