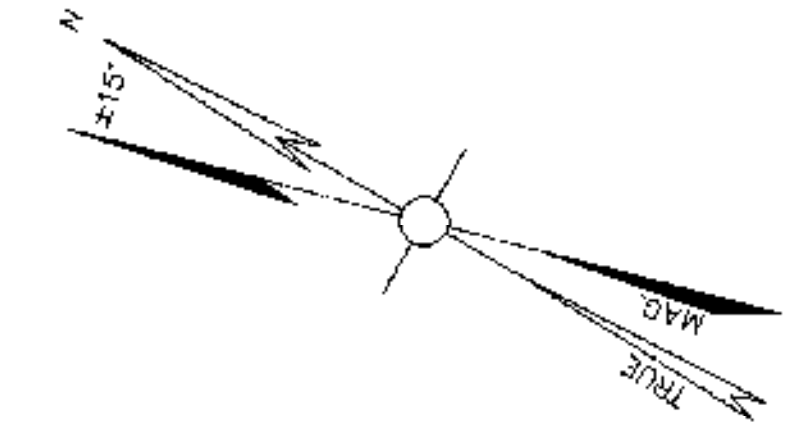
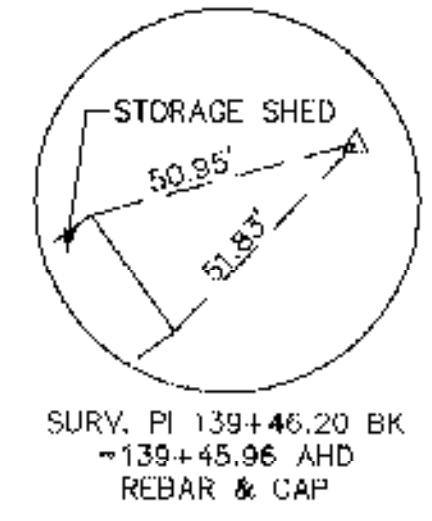


WINOOSKI RIVER



STORAGE SHED

96.34 M (316.08')

REMOVE ABANDONED TRACK SECTIONS TO 4" DEPTH, ADD 4" TOPSOIL, FERTILIZE, SEED & MULCH.

TREATED TIMBER CURB (MODIFIED A)  
ITEM 616.35 (MOD. A)  
2"x8" .40 CCA PT  
WOOD BORDER  
INSIDE EDGE OF TRACK, TYP.  
SEE SHEET 37 OF 132  
FOR DETAIL

RADIUS 107.59'  
INSIDE TRACK

REMOVE ABANDONED TRACK SECTIONS TO 4" DEPTH, ITEM 203.15  
ADD 4" TOPSOIL, FERTILIZE, SEED AND MULCH.

CONCRETE MONUMENT  
(TO BE SET)

VOID

CONCRETE MONUMENT  
(TO BE SET)

RADIUS 128.59'  
OUTSIDE TRACK

ITEM 616.35 (MOD. B)  
TREATED TIMBER CURB  
WALL TYP.  
SEE SHEET 37 OF 132  
FOR DETAIL

EXISTING LIGHT POLE TO BE RELOCATED  
ITEM 679.25

RETAIN EXISTING  
12" MAPLE

TENNIS COURTS

RELOCATED LIGHT POLE

CUT BACK EXISTING UNDERDRAIN AND GRADE TO DRAIN TO EXISTING RCDI  
ITEM 203.15

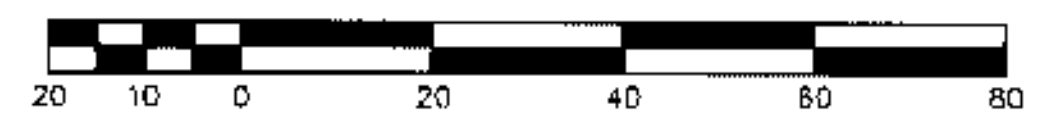
EXISTING FENCELINE TO REMAIN

TREATED TIMBER CURB (MODIFIED A)  
ITEM 616.35 (MOD. A)  
2"x8" .40 CCA PT  
WOOD BORDER  
INSIDE EDGE OF TRACK, TYP.  
SEE SHEET 37 OF 132  
FOR DETAIL

400 METER TRACK. SEE TYPICAL SHEET 39-42 OF 132 FOR DETAIL AND SPECIFICATIONS FOR MATERIAL

EXISTING EDGE OF TRACK

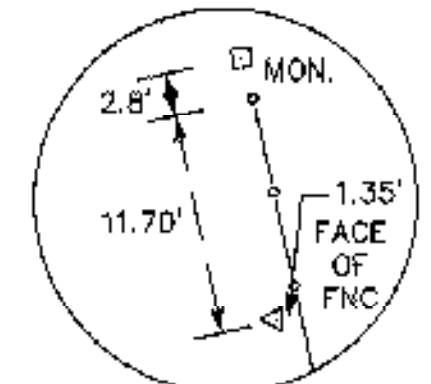
RELOCATED EDGE OF TRACK



N/F MONTPELIER HIGH SCHOOL

N/F STATE OF VERMONT

SURV. PI 143+20.75 BK = 143+20.55 AHD REBAR & CAP



SURV. PI 143+20.75 BK = 143+20.55 AHD REBAR & CAP

#	REVISIONS	DATE	#	REVISIONS	DATE

SURVEY: PEA  
CALCULATED: NPN  
PLOT: 6829TRK2  
DESIGN: NPN  
DRAFT: NPN  
CHECKED: L.D.Y.  
APPROVED: K.W.P.  
DATE: 4/5/97  
SCALE: 1"=20'

400 METER TRACK RELOCATION PLAN  
WINOOSKI RIVER WEST  
BIKE PATH  
MONTEPELIER, VERMONT

FAX: (802)-658-3629 **PEA** BUS: (802)-658-5588

PROJ. NO. 6829

PINKHAM ENGINEERING ASSOCIATES, INC.  
50 Joy Drive, P.O. Box 2225, South Burlington, VT 05407

SHEET 39 OF 132