

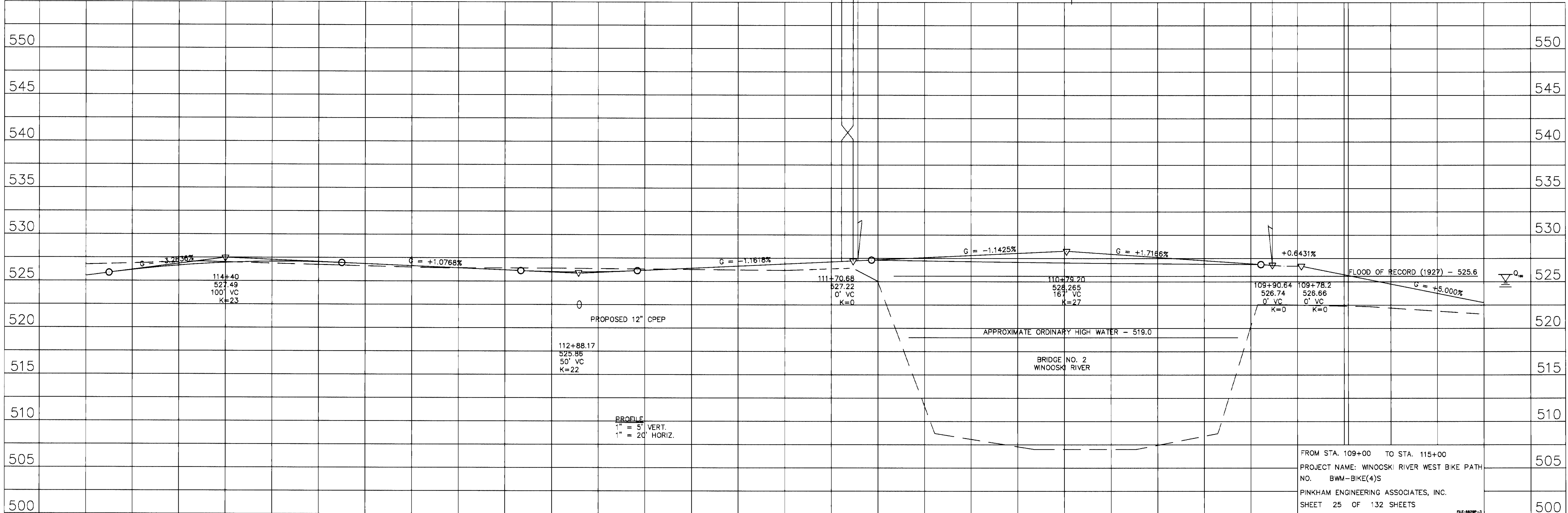
**BANKING DIAGRAM**  
 1" = 20' HORIZ.  
 1" = 0.050 FT/FT VERT.

115+00      114+00      113+00      112+00      111+00      110+00      109+00

STA 111+70.68 AH  
 = STA 111+75.60 BK  
 EQ. = +4.92

STA 111+68.64  
 END BRIDGE RESUME PATH

BEGIN BRIDGE  
 STA 109+90.64 ELEV. 526.73



115+00      114+00      113+00      112+00      111+00      110+00      109+00

FROM STA. 109+00 TO STA. 115+00  
 PROJECT NAME: WNOOSKI RIVER WEST BIKE PATH  
 NO. BWM-BIKE(4)S  
 PINKHAM ENGINEERING ASSOCIATES, INC.  
 SHEET 25 OF 132 SHEETS

FILE: 0829P-3