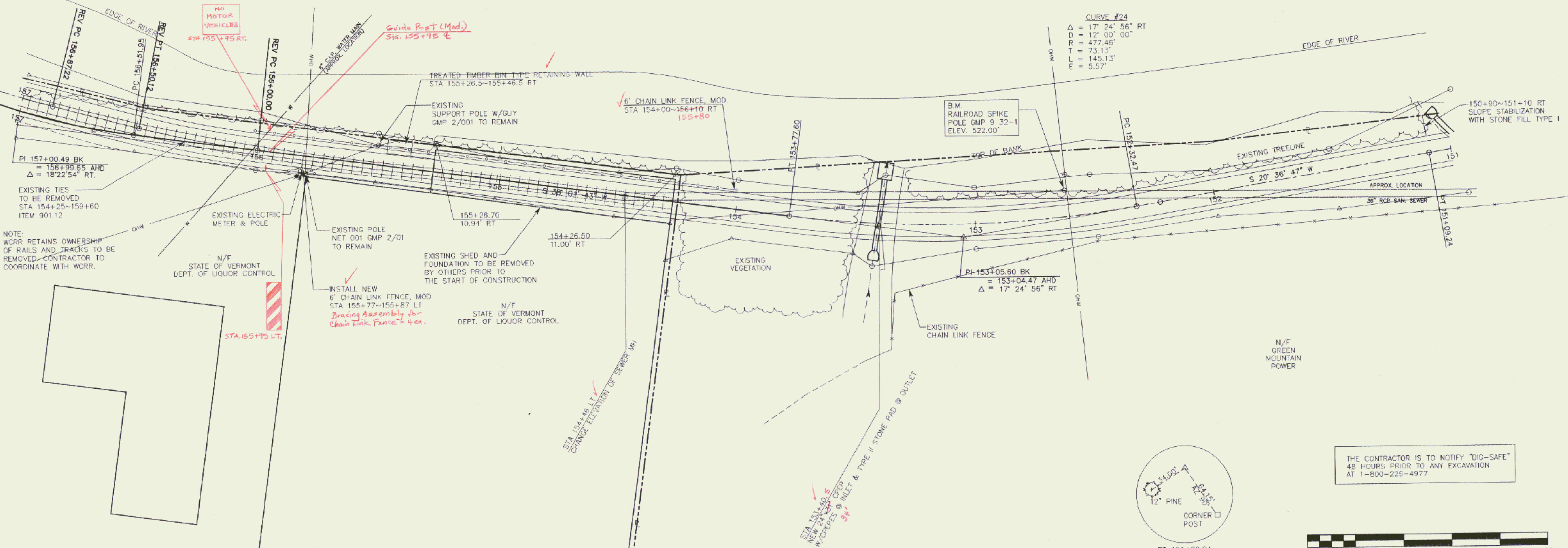


WINOOSKI RIVER

REV CURVE 25A
 $\Delta = 6^{\circ}00'06''$ RT
 $D = 11^{\circ}58'26''$
 $R = 478.51'$
 $T = 25.08'$
 $L = 50.12'$

CURVE #24
 $\Delta = 17^{\circ}24'56''$ RT
 $D = 12^{\circ}00'00''$
 $R = 477.46'$
 $T = 73.13'$
 $L = 145.13'$
 $E = 5.57'$



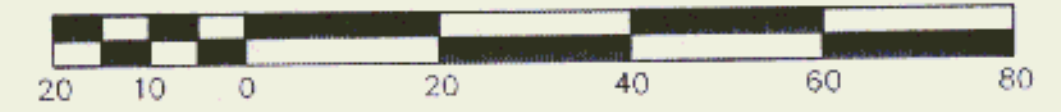
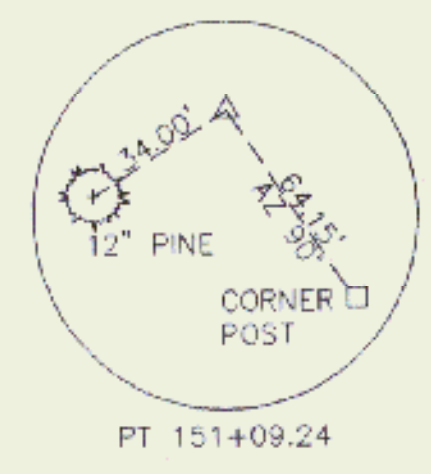
NOTE: WCRB RETAINS OWNERSHIP OF RAILS AND TRACKS TO BE REMOVED-CONTRACTOR TO COORDINATE WITH WCRB.

N/F STATE OF VERMONT DEPT. OF LIQUOR CONTROL

N/F STATE OF VERMONT DEPT. OF LIQUOR CONTROL

N/F GREEN MOUNTAIN POWER

THE CONTRACTOR IS TO NOTIFY "DIG-SAFE" 48 HOURS PRIOR TO ANY EXCAVATION AT 1-800-225-4977



#	REVISIONS	DATE	#	REVISIONS	DATE
1	Length of Binwall	2/6/98			
2	Revised Alignment	4/24/98			

SURVEY: PEA
 CALCULATED: LDY/NPN
 PLOT: 6829-R12
 DESIGN: DAW
 DRAFT: NPN/JMM
 CHECKED: LDY
 APPROVED: KWP
 DATE: 4/9/97
 SCALE: 1"=20'

PLAN VIEW - STA 151+00~STA 157+00

WINOOSKI RIVER WEST BIKE PATH

MONTPELIER, VERMONT

FAX: (802)-658-3629 P.E.A. TEL: (802)-658-5588

PINKHAM ENGINEERING ASSOCIATES, INC.
 50 Joy Drive, P.O. Box 2223, South Burlington, VT 05407

PROJ. NO. 6829
 SHEET 19 OF 132

