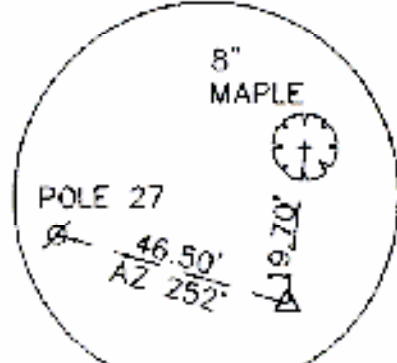
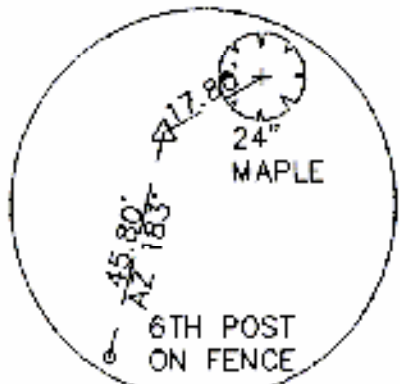


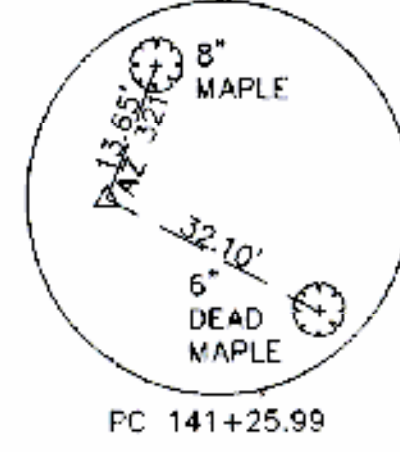
PI 145+33.07 BK
145+32.40 AHD
REBAR & CAP



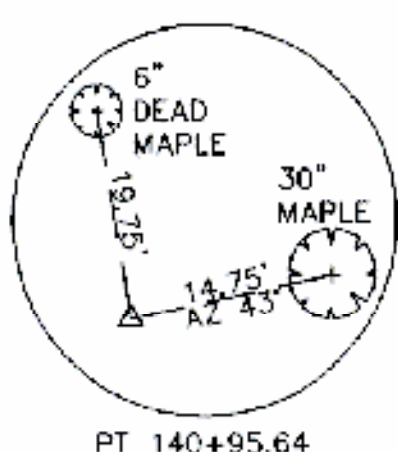
POLE 27
PC 144+59.18



PT 142+88.33



PC 141+25.99



PT 140+95.64

WINOOSKI RIVER

REV CURVE #20
Δ = 0° 09' 56" RT
D = 1' 39' 19"
R = 3481.81
T = 5.00
L = 10.00
E = 0.004'

REV CURVE #19
Δ = 7° 45' 35" RT
D = 38' 11' 50"
R = 180.00'
T = 10.17'
L = 20.31'
E = 0.34'

DENSE PLANTINGS AND STREAM BANK SEEDING
STA 140+30 RT - 140+85 RT
STA 141+00 RT - 142+00 RT
SEE SHEET 38A OF 132

REV CURVE #16
Δ = 21° 40' 29" RT
D = 19' 05' 55"
R = 300.00'
T = 57.43'
L = 113.49'
E = 5.45'

STA 145+02 RT.
PROVIDE RISER POLE WITH METER CHANNEL AND WEATHERPROOF CIRCUIT BREAKER DISCONNECT SWITCH.
INSTALL TWO No. 6 & ONE #10 GROUND IN 1 1/4" CONDUIT, EASTERLY CIRCUIT AND TWO No. 8 & ONE #10 GROUND IN 1 1/4" CONDUIT, WESTERLY CIRCUIT FOR STREET LIGHTING, ITEM 879, (MOD.).

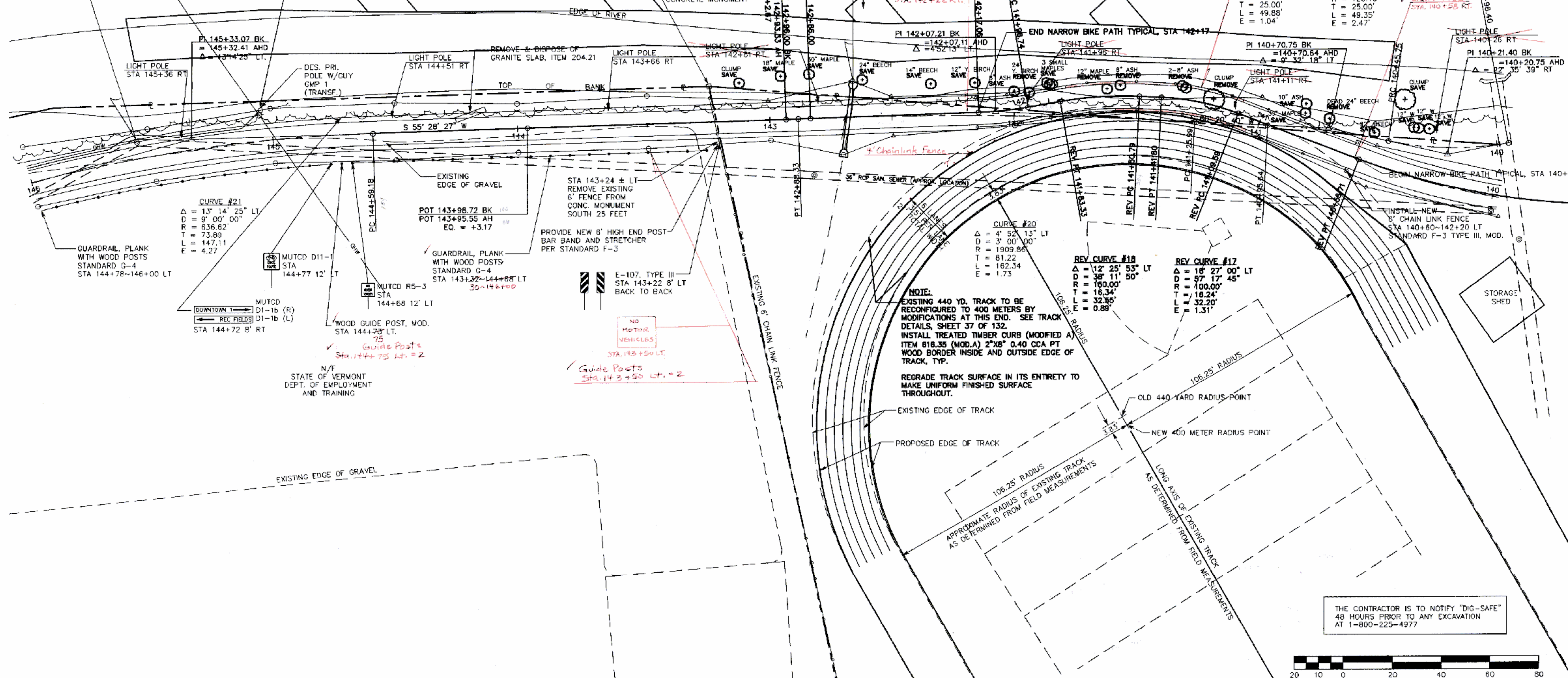
CONSTRUCT ROCK DEFLECTION OF TYPE IV STONE (SEE DETAIL SHEET 38A OF 132).

STA 140+50 RT TO 145+50 RT. INSTALL STONE FILL, TYPE IV, WITH ROCK DEFLECTIONS, ITEM 613.13.

CURVE #19
Δ = 9° 32' 18" LT
D = 19' 07' 15"
R = 299.65'
T = 25.00'
L = 49.85'
E = 1.04'

CURVE #18
Δ = 22° 35' 39" RT
D = 45' 47' 00"
R = 125.15'
T = 25.00'
L = 49.35'
E = 2.47'

LIGHT POLE STA. 140+58 RT.



THE CONTRACTOR IS TO NOTIFY "DIG-SAFE" 48 HOURS PRIOR TO ANY EXCAVATION AT 1-800-225-4977



#	REVISIONS	DATE	#	REVISIONS	DATE
1	REVISED ALIGNMENT	5/8/98			
2	ADDED TRACK DIMENSIONS	7/14/98			

SURVEY: PEA
CALCULATED: LDY
PLOT: 6829-R10
DESIGN: DAW/LDY
DRAFT: DAW/JM
CHECKED: DAW
APPROVED: KWP
DATE: 4/9/97
SCALE: 1"=20'

PLAN VIEW - STA 140+00~STA 146+00

WINOOSKI RIVER WEST
BIKE PATH
MONTPELIER, VERMONT

PROJ. NO. 6829

SHEET 17 OF 132

PEA
PINKHAM ENGINEERING ASSOCIATES, INC.
30 Joy Drive, P.O. Box 2225, South Burlington, VT 05407

TRAKREV2.DWG