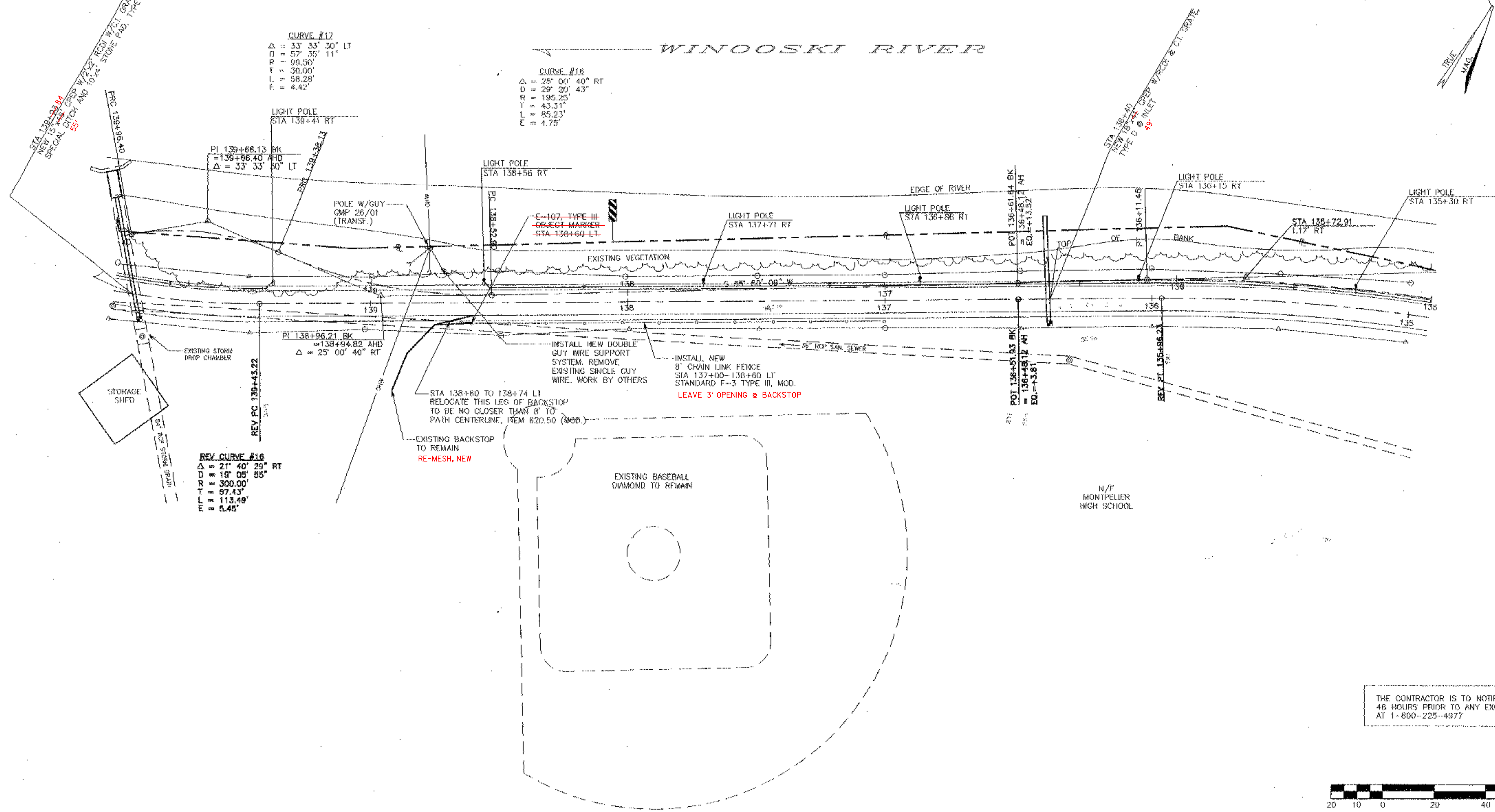


WINOOSKI RIVER

**CURVE #17**  
 $\Delta = 33^\circ 33' 30''$  LT  
 $D = 57' 35' 11''$   
 $R = 99.56'$   
 $T = 30.00'$   
 $L = 58.28'$   
 $E = 4.42'$

**CURVE #16**  
 $\Delta = 25^\circ 00' 40''$  RT  
 $D = 29' 20' 43''$   
 $R = 195.25'$   
 $T = 43.31'$   
 $L = 85.23'$   
 $E = 4.75'$



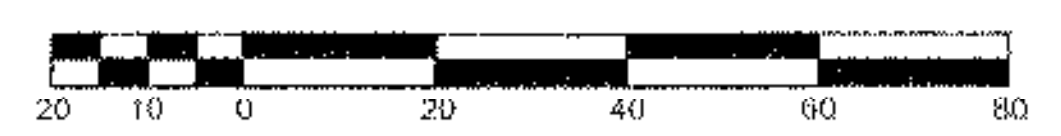
**REV. CURVE #16**  
 $\Delta = 21^\circ 40' 29''$  RT  
 $D = 19' 05' 55''$   
 $R = 300.00'$   
 $T = 97.43'$   
 $L = 113.49'$   
 $E = 5.45'$

INSTALL NEW DOUBLE GUY WIRE SUPPORT SYSTEM. REMOVE EXISTING SINGLE GUY WIRE. WORK BY OTHERS

INSTALL NEW 8" CHAIN LINK FENCE STA 137+00-138+60 LT. STANDARD F-3 TYPE III, MOD. LEAVE 3' OPENING @ BACKSTOP

STA 138+60 TO 138+74 LI. RELOCATE THIS LEG OF BACKSTOP TO BE NO CLOSER THAN 8' TO PATH CENTERLINE, ITEM 820.50 (New)

THE CONTRACTOR IS TO NOTIFY "DIG-SAFE" 48 HOURS PRIOR TO ANY EXCAVATION AT 1-800-225-4977



#	REVISIONS	DATE	#	REVISIONS	DATE
1	REVISED PATH ALIGNMENT	6/17/98			

SURVEY: PEA  
 CALCULATED: NPN/LDY  
 PLOT: BALLREV2  
 DESIGN: DAW  
 DRAFT: NPN/JMM  
 CHECKED: LDY  
 APPROVED: KWP  
 DATE: 4/9/97  
 SCALE: 1"=20'

PLAN VIEW - STA 135+00-STA 140+00  
**WINOOSKI RIVER WEST BIKE PATH**  
 MONTPELIER, VERMONT

PROJ. NO. 6829  
 SHEET 16 OF 132

FAX: (802)-658-3029  
**PEA**  
 PINKHAM ENGINEERING ASSOCIATES, INC.  
 60 Jay Drive, P.O. Box 2325, South Burlington, VT 05407  
 BUS: (802)-658-5108