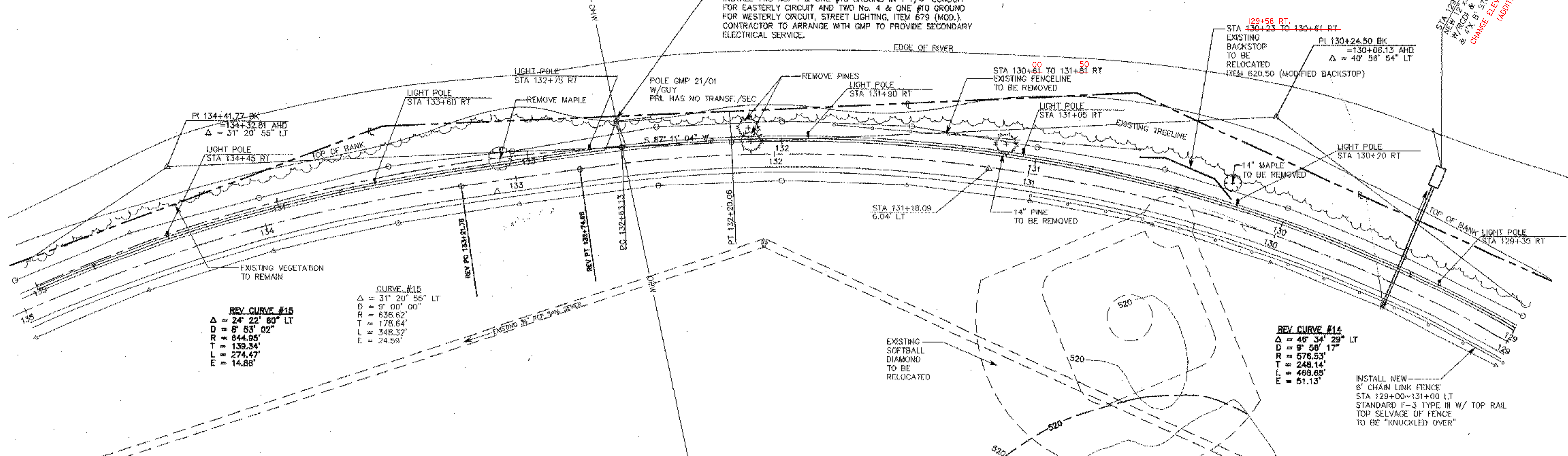
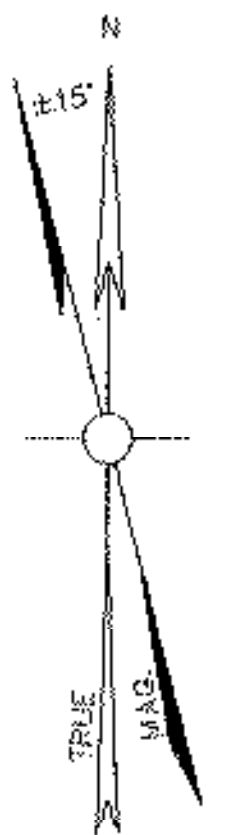


WINOOSKI RIVER

STA 132+64 RT
 PROVIDE RISER POLE WITH METER CHANNEL AND WATERPROOF CIRCUIT BREAKER DISCONNECT SWITCH. INSTALL TWO No. 4 & ONE #10 GROUND IN 1 1/4" CONDUIT FOR EASTERLY CIRCUIT AND TWO No. 4 & ONE #10 GROUND FOR WESTERLY CIRCUIT, STREET LIGHTING, ITEM 679 (MOD.). CONTRACTOR TO ARRANGE WITH GMP TO PROVIDE SECONDARY ELECTRICAL SERVICE.

STA 129+58 RT
 NEW 12" RIBBON CONCRETE
 W/ 2" X 8" C.I. CURB
 & 4" X 8" C.I. STONE
 TYPE I & II
 CHANGE ELEVATION OF DI
 (ADDITIONAL)

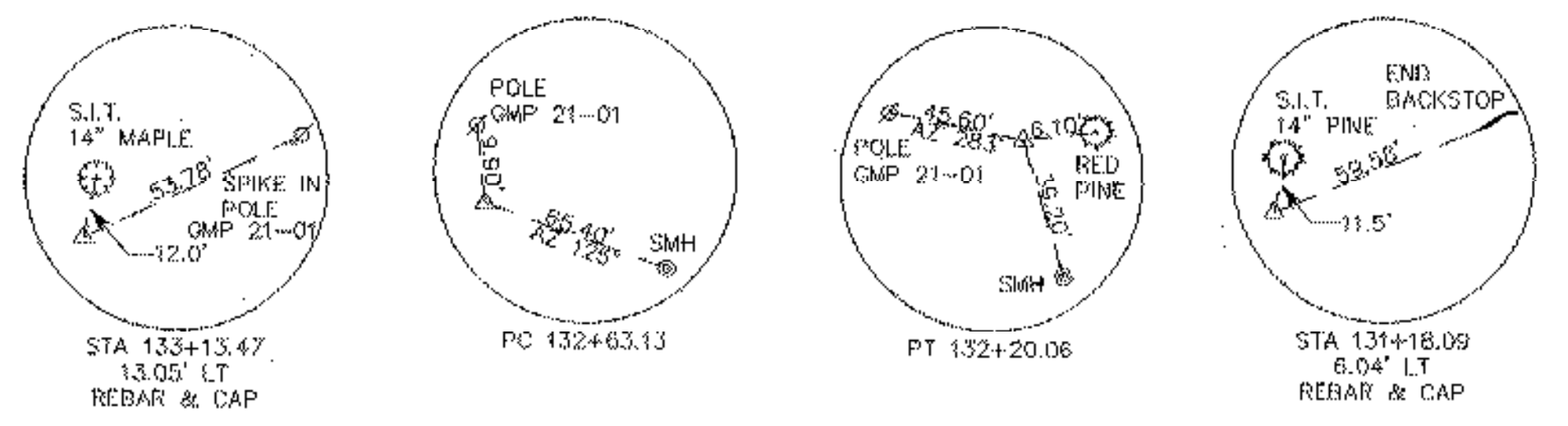


REV CURVE #15
 $\Delta = 24^\circ 22' 02''$ LT
 $D = 8' 53' 02''$
 $R = 644.95'$
 $T = 139.34'$
 $L = 274.47'$
 $E = 14.88'$

CURVE #18
 $\Delta = 31^\circ 20' 55''$ LT
 $D = 9' 00' 00''$
 $R = 636.62'$
 $T = 178.64'$
 $L = 348.32'$
 $E = 24.59'$

REV CURVE #14
 $\Delta = 48^\circ 34' 29''$ LT
 $D = 9' 56' 17''$
 $R = 576.53'$
 $T = 248.14'$
 $L = 488.65'$
 $E = 51.13'$

CURVE #14
 $\Delta = 40^\circ 56' 54''$ LT
 $D = 10' 00' 00''$
 $R = 572.96'$
 $T = 213.93'$
 $L = 409.48'$
 $E = 38.62'$



SEE MISCELLANEOUS
 DETAIL SHEET 37 OF 132
 FOR TYPICAL
 SECTION OF
 SKINNED AREA

PROPOSED SITE OF
 RELOCATED SOFTBALL
 DIAMOND

SOFT BALL FIELD SURVEY BASELINE
 INTERIOR BUILDING CORNER = STA 50+00

THE CONTRACTOR IS TO NOTIFY "DIG-SAFE"
 48 HOURS PRIOR TO ANY EXCAVATION
 AT 1-800-225-4977



#	REVISIONS	DATE	#	REVISIONS	DATE
1	REVISED PATH ALIGNMENT	6/17/98			

SURVEY: PEA
 CALCULATED: NPN/LDY
 PLOT: BALL/REVI
 DESIGN: DAW
 DRAFT: NPN/JMM
 CHECKED: LDY
 APPROVED: KWP
 DATE: 4/9/97
 SCALE: 1"=20'

PLAN VIEW - STA 129+00~STA 135+00

WINOOSKI RIVER WEST BIKE PATH MONTPELIER, VERMONT

FAX (802)-858-5629 **PEA** BUS (802)- 658-5588

PROJ. NO. 6829
 SHEET 15 OF 132

PINKHAM ENGINEERING ASSOCIATES, INC.
 50 Joy Drive, P.O. Box 2225, South Burlington, VT 05407