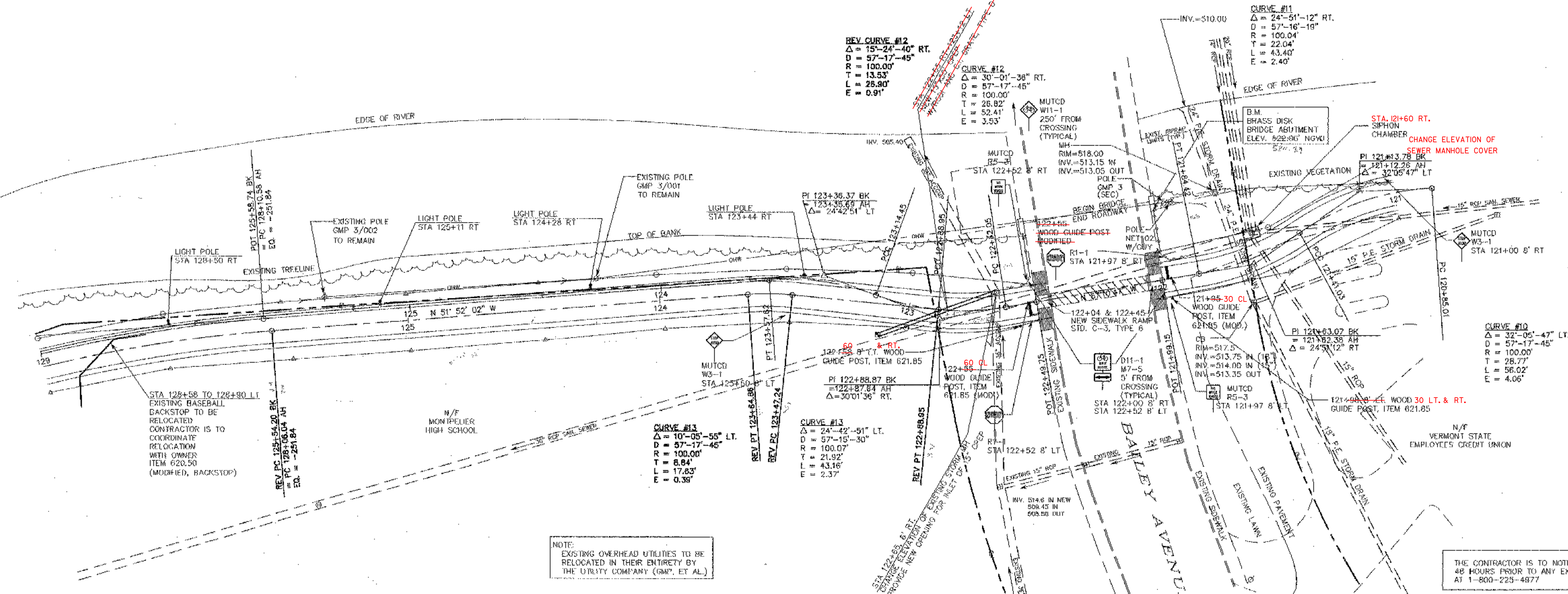


# WINOOSKI RIVER

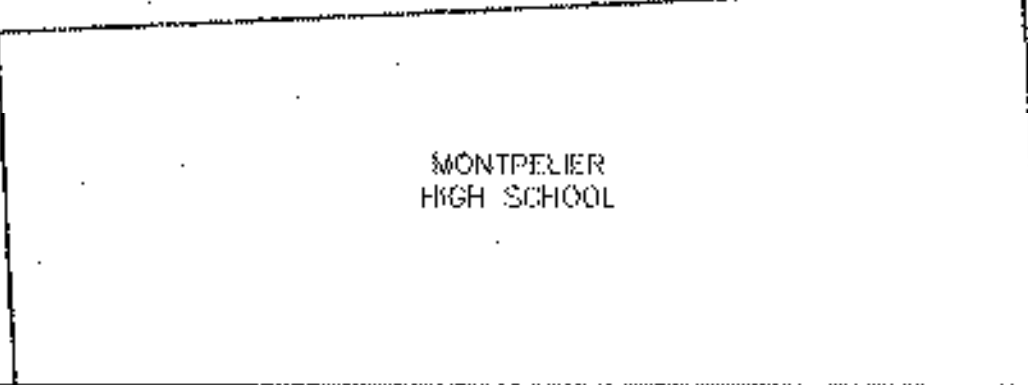
DURABLE 12" WHITE LINE  
FOR STOP BARS, ITEM 646.44  
STA 121+97 RT  
STA 122+52 LT



STA 128+58 TO 128+80 LT  
EXISTING BASEBALL  
BACKSTOP TO BE  
RELOCATED  
CONTRACTOR IS TO  
COORDINATE  
RELOCATION  
WITH OWNER  
ITEM 620.50  
(MODIFIED, BACKSTOP)

NOTE:  
EXISTING OVERHEAD UTILITIES TO BE  
RELOCATED IN THEIR ENTIRETY BY  
THE UTILITY COMPANY (GMP, ET AL.)

THE CONTRACTOR IS TO NOTIFY "DIG-SAFE"  
48 HOURS PRIOR TO ANY EXCAVATION  
AT 1-800-225-4977



#	REVISIONS	DATE	#	REVISIONS	DATE
1	REVISED PATH ALIGNMENT	6/17/98			

SURVEY: PEA  
CALCULATED: NPN/LDY  
PLOT: BALLREV3  
DESIGN: DAW  
DRAFT: NPN  
CHECKED: LDY  
APPROVED: KWP  
DATE: 4/9/97  
SCALE: 1"=20'

PLAN VIEW - STA 121+00~STA 129+00  
**WINOOSKI RIVER WEST  
BIKE PATH**  
MONTPELIER, VERMONT

PROJ. NO. 6829  
SHEET 14 OF 132

FAX: (802)-658-3629  
**PEA**  
PINKHAM ENGINEERING ASSOCIATES, INC.  
50 Joy Drive, P.O. Box 2225, South Burlington, VT 05407