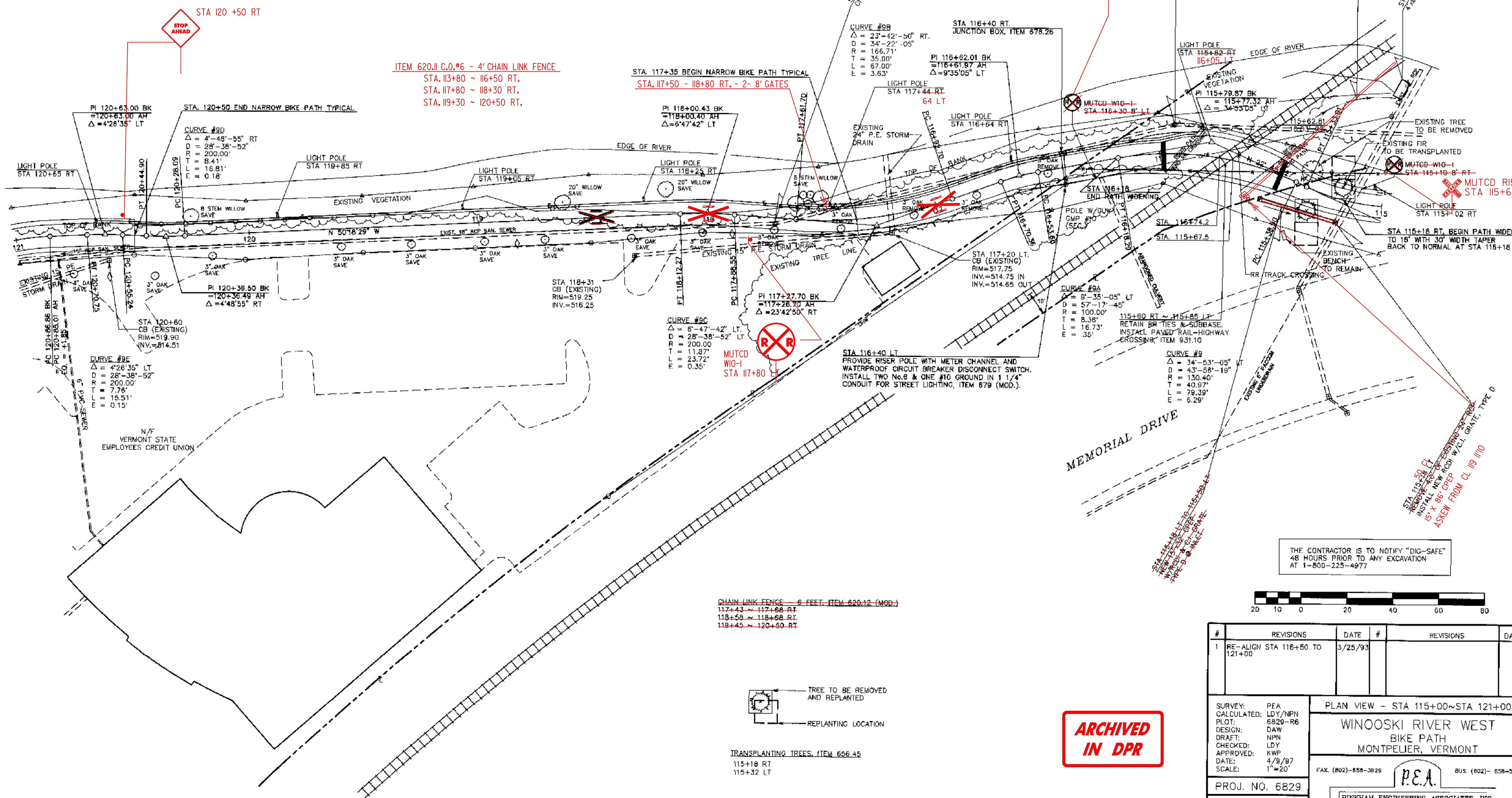


24" STOP BAR ITEM 646.26
115+46
115+99
RAILROAD CROSSING SYMBOL ITEM 646.32
118+49 117+0 & 118+0

WINOOSKI RIVER

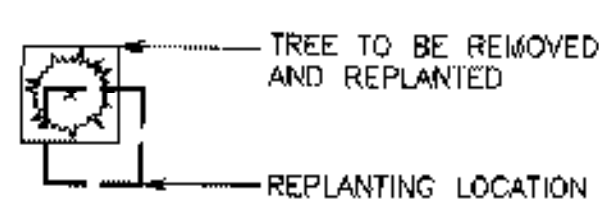
ITEM 620.11 C.O.*6 - 4' CHAIN LINK FENCE
STA. 113+80 ~ 116+50 RT.
STA. 117+80 ~ 118+30 RT.
STA. 119+30 ~ 120+50 RT.

STA. 117+35 BEGIN NARROW BIKE PATH TYPICAL
STA. 117+50 - 118+80 RT. - 2- 8' GATES



THE CONTRACTOR IS TO NOTIFY "DIG-SAFE"
48 HOURS PRIOR TO ANY EXCAVATION
AT 1-800-225-4977

CHAIN LINK FENCE - 6 FEET ITEM 620.12 (MOD.)
117+43 ~ 117+68 RT
118+58 ~ 118+68 RT
119+45 ~ 120+50 RT



TRANSPLANTING TREES, ITEM 656.45
115+18 RT
115+32 LT

**ARCHIVED
IN DPR**



#	REVISIONS	DATE	#	REVISIONS	DATE
1	RE-ALIGN STA 116+50 TO 121+00	3/25/93			

SURVEY: PEA
CALCULATED: LDY/NPN
PLOT: 6829-R6
DESIGN: DAW
DRAFT: NPN
CHECKED: LDY
APPROVED: KWP
DATE: 4/9/97
SCALE: 1"=20'

PLAN VIEW - STA 115+00~STA 121+00
WINOOSKI RIVER WEST
BIKE PATH
MONTEPELLIER, VERMONT

FAX: (802)-858-3529
P.E.A.
BUS: (802)- 858-5588
PINKHAM ENGINEERING ASSOCIATES, INC.
50 Joy Drive, P.O. Box 2225, South Burlington, VT 05407

PROJ. NO. 6829
SHEET 13 OF 132