

STATE OF VERMONT AGENCY OF TRANSPORTATION

PROPOSED IMPROVEMENT COUNTY OF WASHINGTON CITY OF MONTPELIER

WINOOSKI RIVER WEST BIKEWAY

BEGINNING AT A POINT AT THE WEST EDGE OF TAYLOR ST. AND EXTENDING NORTH WESTERLY
APPROXIMATELY 5027 FEET TO THE EXISTING BIKE PATH ALONG THE WINOOSKI RIVER

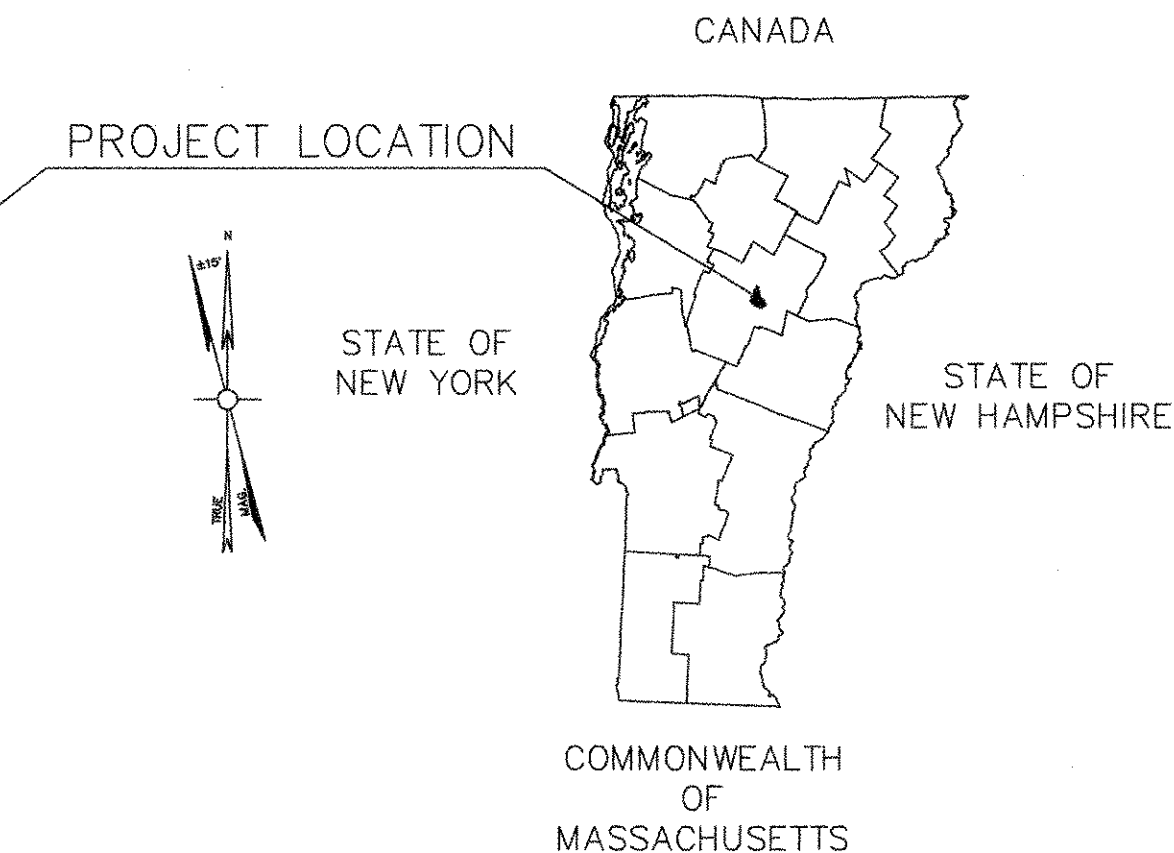
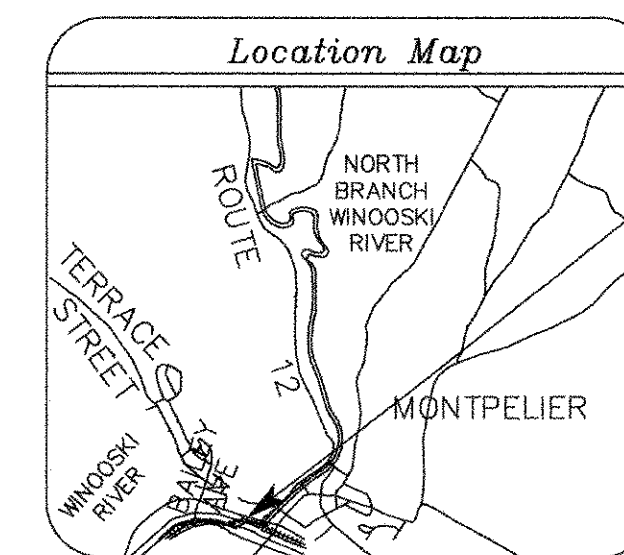
LENGTH OF PATHWAY 4779.16 FEET = 0.905 MILES.

LENGTH OF BRIDGES 178.00 FEET = 0.034 MILES.

LENGTH OF RAILROAD CROSSINGS 70.00 FEET = 0.013 MILES.

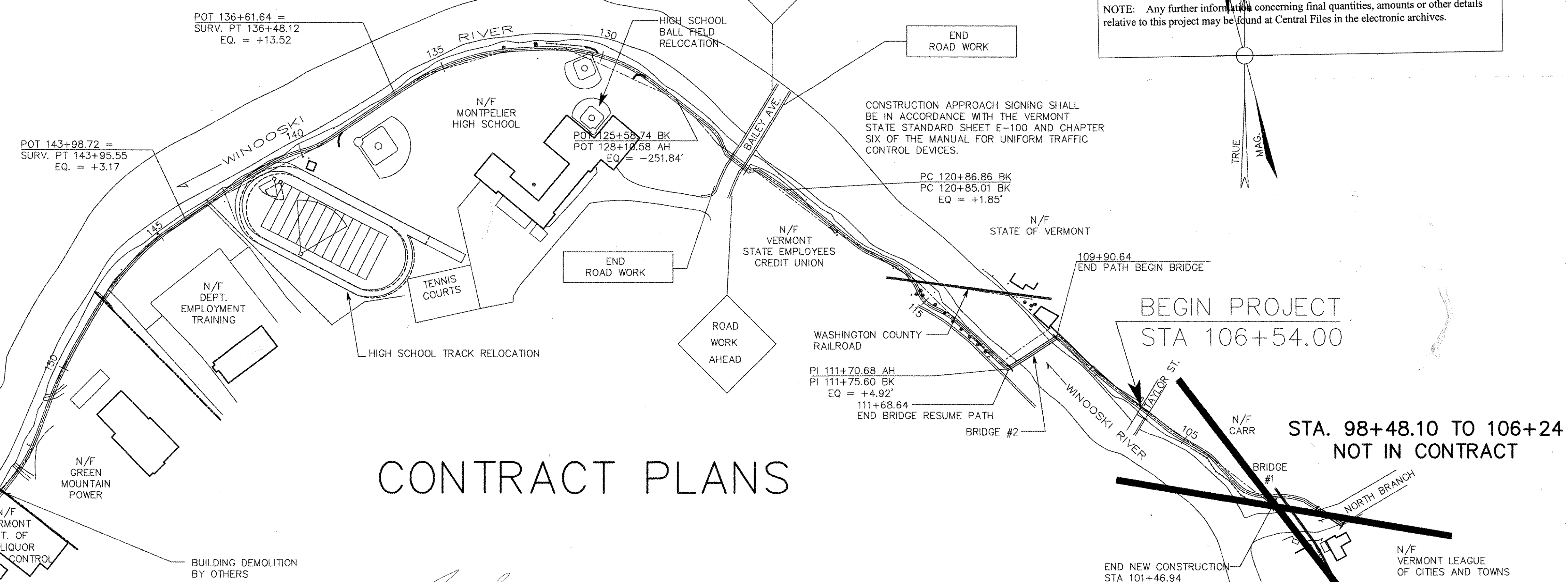
LENGTH OF PROJECT 5027.16 FEET = 0.952 MILES

WORK TO BE PERFORMED UNDER THIS PROJECT INCLUDES
GRADING, DRAINAGE, SUBBASE, PAVEMENT, BRIDGE STRUCTURES,
TRACK AND SOFTBALL FIELD RELOCATION, FENCING,
LIGHTING AND SIGNING FOR AN URBAN BIKE PATH.



RECORD PLANS	
CONTRACTOR:	UNITED CONSTRUCTION CORP.
RESIDENT ENGINEER:	VIC DWIRE
CONSTRUCTION BEGAN:	MARCH 16, 1998
CONSTRUCTION COMPLETE:	JANUARY 6, 1999
RECORD PLANS BY:	K. NORTH & N. GARBACIK
I HEREBY CERTIFY THAT ALL THE CONSTRUCTION REQUIRED BY THIS SET OF DRAWINGS HAS BEEN ACCOMPLISHED AS INDICATED HEREIN.	
BY:	<i>Vic Dwire</i> RESIDENT ENGINEER
DATE:	12-7-2004
NOTE: Any further information concerning final quantities, amounts or other details relative to this project may be found at Central Files in the electronic archives.	

- INDEX OF SHEETS**
1. TITLE
 - 2-4. SUMMARY OF QUANTITIES
 5. ITEM DETAIL AND DRAINAGE SHEETS
 - 6-8. EARTHWORK AND GRADE SHEETS
 9. BLANK
 - 10-20. PLAN VIEWS
 - 21-22. BLANK
 - 23-33. PROFILE SHEETS
 34. BLANK
 35. TRAFFIC SIGN SUMMARY SHEET
 36. ADDITIONAL PROJECT SIGNS
 37. MISC. DETAILS
 38. PATH TYPICALS AND BRIDGE DETAILS
 - 39-43. 400 METER TRACK RELOCATION AND SOFTBALL FIELD RELOCATION PLANS
 - 44-45. BLANK
 46. BRIDGE SUPERSTRUCTURE DETAILS
 - 47-48. BRIDGE PLAN VIEWS
 - 49-52. ABUTMENT DETAILS
 53. BRIDGE REINFORCING STEEL SCHEDULE
 - 54-74. BLANK
 - 75-92. CROSS SECTIONS
 - 93-94. BLANK
 95. B-5 SLOPE GRADING, EMBANKMENTS, MUCK 6-1-94
 96. C-3 SIDEWALK RAMPS 6-1-94
 97. D-2 CEMENT RUBBLE MASONRY RETAINING WALL 6-1-94
 98. D-4 CORRUGATED PIPE ELBOW METAL END SECTION FOR CORRUGATED GALVANIZED METAL PIPE, 6-1-94
 99. D-6 REINFORCED CONCRETE DROP INLET WITH GRATE (DITCHES) 6-1-94
 100. D-8 REINFORCED CONCRETE DROP INLET WITH GRATE (BOTTOM SECTION), 6-1-94
 101. BLANK
 102. D-15 PRECAST REINFORCED CONC. MH GRATES, TYPE D... 6-1-94
 103. D-16 PRECAST REINF. CONC. CURB, TYPE C... 6-1-94
 104. E-100 CONSTRUCTION APPROACH SIGNS, 01-06-97
 105. E-107 DELINEATION, BARRICADES AND DETOURS FOR CONSTRUCTION AREAS, 8-8-95
 106. E-121 STANDARD SIGN PLACEMENT - CONVENTIONAL ROAD, 8-8-95
 - 107-110. BLANK
 111. E-160 FLANGED CHANNEL STEEL SIGN POSTS, 8-18-95
 112. E-173 PULL BOXES AND JUNCTION BOXES, 8-9-95
 113. E-175 POWER DROP STANCHIONS, 11-17-93 R
 114. E-180A STREET LIGHTING DETAILS, 8-9-95
 115. E-180B STREET LIGHTING DETAILS, 8-9-95
 116. E-190 RAILROAD CROSSING SIGNS AND PAVEMENT MARKINGS, 8-18-95
 - 117-120. BLANK
 121. E-191 PAVEMENT MARKING DETAILS, 8-18-95
 122. F-3 CHAIN LINK FENCE - TYPE III, 6-1-94
 123. G-4 GUARD RAIL, PLANK WITH WOOD POST, WOOD GUIDE POSTS, WOOD MARKER POSTS, 6-1-94
 124. H2 TIMBER BIN WALL SHEETS 1, 2 & 3 OF 3, 11 JAN 90
 125. RR-1 RAIL HIGHWAY CROSSING STANDARDS, 6-1-94
 - 126-130. BLANK
 131. T-1 TEMPORARY EROSION CONTROL DETAILS, 6-1-94
 132. T-2 TEMPORARY EROSION CONTROL DETAILS, 6-1-94
 - 132A. F-2 CHAIN LINK FENCE TYPE I 6-1-94*
 - 132B. F-4 CHAIN LINK FENCE TYPE II 6-1-94*



CONTRACT PLANS

CONVENTIONAL SIGNS

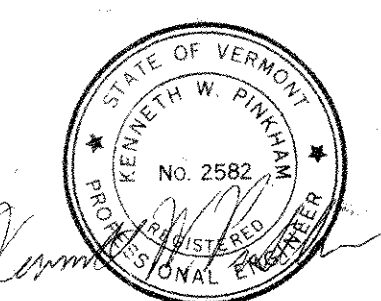
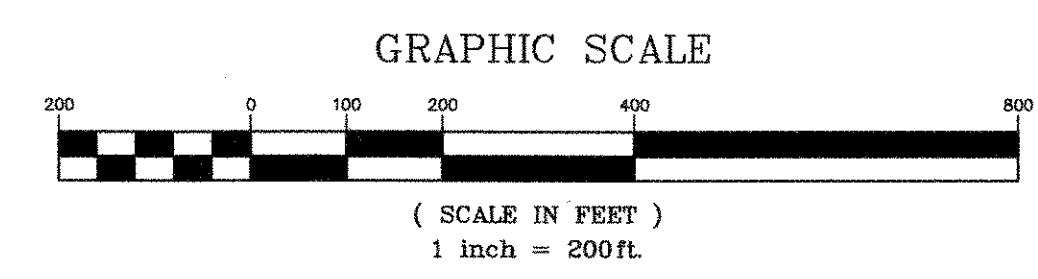
FENCE LINE	○—○—○
TREE LINE	~ ~ ~
TRAVELED WAY	==
GUARD RAIL	—•—•—
RAILROAD	—+—+—
SURVEY LINE	—+—+—
CULVERT	—+—+—
UTILITY POLE	⊙
PATH LIGHTING	⊙
ELECTRIC LINE	—E—
TREES	⊕ ⊕
PROPERTY LINE	—+—+—
TOP OF CUT	—▽—▽—
TOE OF SLOPE	—○—○—

END PROJECT
159+12.95

INDICATES OUT OF ORDER.

DATUM	
VERTICAL	NGVD 1929
HORIZONTAL	N/A

- APPROVED *Richard Dwyer* DATE 4/15/97 FOR WASHINGTON COUNTY RAILROAD CORPORATION
- APPROVED *John A. O'Keefe* DATE 7/2/97 FOR MONTPELIER PUBLIC SCHOOL SYSTEM BOARD OF SCHOOL COMMISSIONERS
- APPROVED *Walter J. ...* DATE 4/7/97 FOR GREEN MOUNTAIN POWER CORPORATION
- APPROVED *John ...* DATE 5/14/97 FOR STATE OF VERMONT DEPARTMENT OF BUILDINGS AND GENERAL SERVICES
- APPROVED *John ...* DATE 4/1/97 FOR VERMONT STATE EMPLOYEES CREDIT UNION



THESE PLANS ARE SUBJECT TO SUCH ENGINEERING CHANGES AS MAY BE REQUIRED BY THE FEDERAL HIGHWAY ADMINISTRATION OR THE CHIEF ENGINEER. CONSTRUCTION IS TO BE CARRIED ON IN ACCORDANCE WITH THESE PLANS AND THE STANDARD SPECIFICATIONS FOR CONSTRUCTION DATED 1990, AS APPROVED BY THE FEDERAL HIGHWAY ADMINISTRATION ON MARCH 15, 1990 FOR USE ON THIS PROJECT, INCLUDING ALL SUBSEQUENT REVISIONS AND SUCH REVISED SPECIFICATIONS AND SPECIAL PROVISIONS AS ARE INCORPORATED IN THESE PLANS.

BUS. (802) 658-5588 **P E A** FAX (802) 658-3629
PINKHAM ENGINEERING ASSOCIATES, INC.
 The Maltex Building
 431 Pine St., Burlington, VT 05401

REVISED 10/30/96 - ADDED SIGNATURE BLOCK

SUBMITTED BY ORDER OF THE STATE TRANSPORTATION BOARD

APPROVED *Richard A. ...* DATE 12-3-94
 Richard A. ... CHIEF ENGINEER

DEPARTMENT OF TRANSPORTATION
 FEDERAL HIGHWAY ADMINISTRATION

APPROVED _____ DATE _____
 DIVISION ADMINISTRATOR

PROJECT WINOOSKI RIVER WEST
 BIKEWAY, BWM-BIKE (4)S
 SHEET 1 OF 132 SHEETS