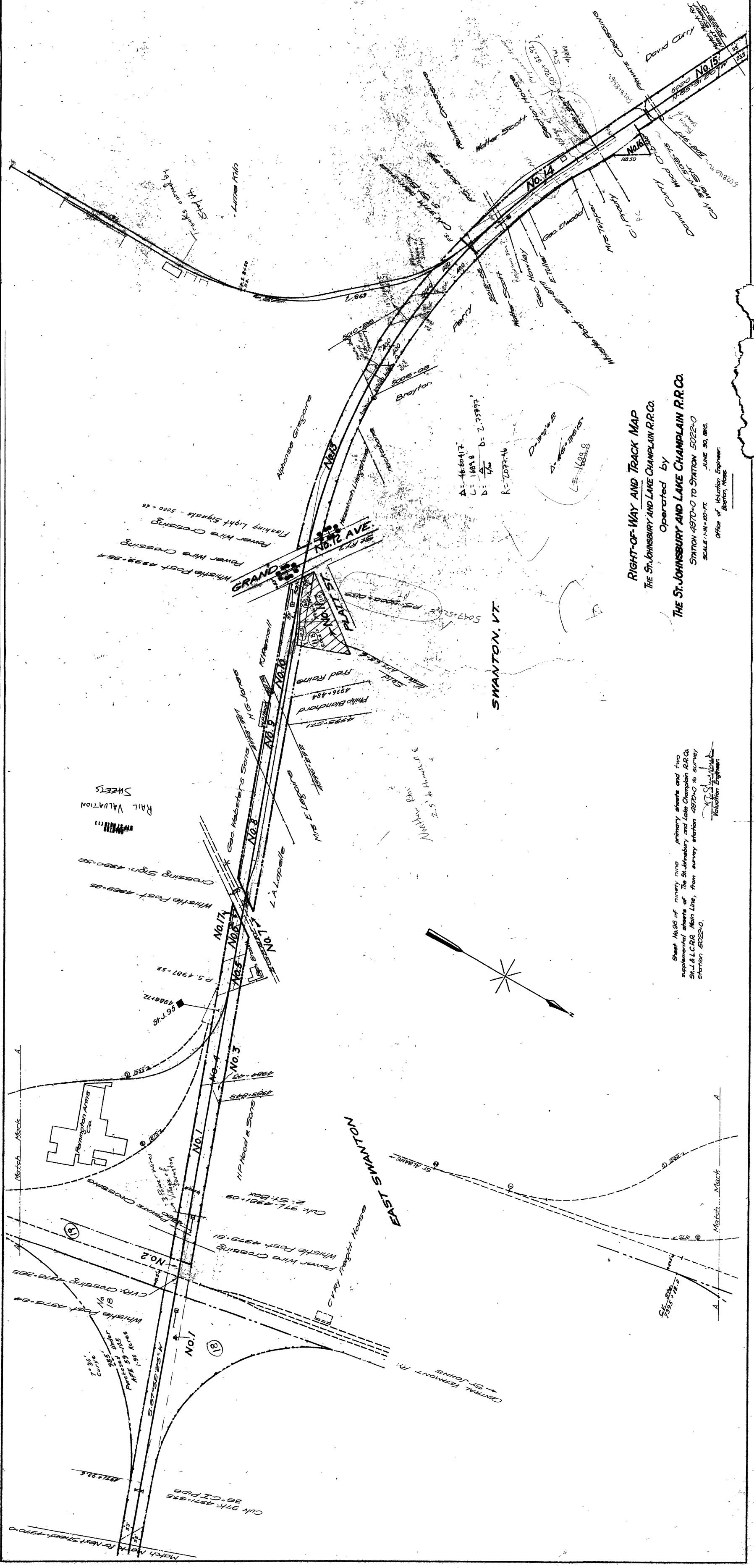


Station	Distance	Notes
0+00	0.00	Start of Right-of-Way
0+10	0.10	Point of Beginning
0+20	0.20	Point of Curvature
0+30	0.30	Point of Tangency
0+40	0.40	Point of Beginning
0+50	0.50	Point of Curvature
0+60	0.60	Point of Tangency
0+70	0.70	Point of Beginning
0+80	0.80	Point of Curvature
0+90	0.90	Point of Tangency
1+00	1.00	Point of Beginning
1+10	1.10	Point of Curvature
1+20	1.20	Point of Tangency
1+30	1.30	Point of Beginning
1+40	1.40	Point of Curvature
1+50	1.50	Point of Tangency
1+60	1.60	Point of Beginning
1+70	1.70	Point of Curvature
1+80	1.80	Point of Tangency
1+90	1.90	Point of Beginning
2+00	2.00	Point of Curvature
2+10	2.10	Point of Tangency
2+20	2.20	Point of Beginning
2+30	2.30	Point of Curvature
2+40	2.40	Point of Tangency
2+50	2.50	Point of Beginning
2+60	2.60	Point of Curvature
2+70	2.70	Point of Tangency
2+80	2.80	Point of Beginning
2+90	2.90	Point of Curvature
3+00	3.00	Point of Tangency
3+10	3.10	Point of Beginning
3+20	3.20	Point of Curvature
3+30	3.30	Point of Tangency
3+40	3.40	Point of Beginning
3+50	3.50	Point of Curvature
3+60	3.60	Point of Tangency
3+70	3.70	Point of Beginning
3+80	3.80	Point of Curvature
3+90	3.90	Point of Tangency
4+00	4.00	Point of Beginning
4+10	4.10	Point of Curvature
4+20	4.20	Point of Tangency
4+30	4.30	Point of Beginning
4+40	4.40	Point of Curvature
4+50	4.50	Point of Tangency
4+60	4.60	Point of Beginning
4+70	4.70	Point of Curvature
4+80	4.80	Point of Tangency
4+90	4.90	Point of Beginning
5+00	5.00	Point of Curvature
5+10	5.10	Point of Tangency
5+20	5.20	Point of Beginning
5+30	5.30	Point of Curvature
5+40	5.40	Point of Tangency
5+50	5.50	Point of Beginning
5+60	5.60	Point of Curvature
5+70	5.70	Point of Tangency
5+80	5.80	Point of Beginning
5+90	5.90	Point of Curvature
6+00	6.00	Point of Tangency
6+10	6.10	Point of Beginning
6+20	6.20	Point of Curvature
6+30	6.30	Point of Tangency
6+40	6.40	Point of Beginning
6+50	6.50	Point of Curvature
6+60	6.60	Point of Tangency
6+70	6.70	Point of Beginning
6+80	6.80	Point of Curvature
6+90	6.90	Point of Tangency
7+00	7.00	Point of Beginning
7+10	7.10	Point of Curvature
7+20	7.20	Point of Tangency
7+30	7.30	Point of Beginning
7+40	7.40	Point of Curvature
7+50	7.50	Point of Tangency
7+60	7.60	Point of Beginning
7+70	7.70	Point of Curvature
7+80	7.80	Point of Tangency
7+90	7.90	Point of Beginning
8+00	8.00	Point of Curvature
8+10	8.10	Point of Tangency
8+20	8.20	Point of Beginning
8+30	8.30	Point of Curvature
8+40	8.40	Point of Tangency
8+50	8.50	Point of Beginning
8+60	8.60	Point of Curvature
8+70	8.70	Point of Tangency
8+80	8.80	Point of Beginning
8+90	8.90	Point of Curvature
9+00	9.00	Point of Tangency
9+10	9.10	Point of Beginning
9+20	9.20	Point of Curvature
9+30	9.30	Point of Tangency
9+40	9.40	Point of Beginning
9+50	9.50	Point of Curvature
9+60	9.60	Point of Tangency
9+70	9.70	Point of Beginning
9+80	9.80	Point of Curvature
9+90	9.90	Point of Tangency
10+00	10.00	Point of Beginning



RIGHT-OF-WAY AND TRACK MAP
 The STAMFORD AND LAKE CHARLETTON R.R. CO.
 Operated by
 The ST. JOHNSBURY AND LAKE CHARLETTON R.R. CO.
 STAMFORD 4970+0 TO STAMFORD 5025+0
 SCALE 1"=100' HORIZ. 1"=10' VERT.
 DATE 10/15/1910
 DRAWN BY [Name]

Notes:
 1. All right-of-way lines shown on this map are the property of the St. Johnsbury and Lake Champlain R.R. Co.
 2. The location of the center line of the track is shown by a solid line.
 3. The location of the right-of-way lines is shown by dashed lines.
 4. The location of the main line is shown by a solid line with cross-ticks.
 5. The location of the branch line is shown by a solid line with cross-ticks and a dashed line.
 6. The location of the crossing is shown by a solid line with cross-ticks and a dashed line.
 7. The location of the utility lines is shown by a solid line with cross-ticks and a dashed line.
 8. The location of the Champlain River is shown by a solid line with cross-ticks and a dashed line.
 9. The location of the Swanton Ave. crossing is shown by a solid line with cross-ticks and a dashed line.
 10. The location of the Main Ave. crossing is shown by a solid line with cross-ticks and a dashed line.
 11. The location of the Grand Ave. crossing is shown by a solid line with cross-ticks and a dashed line.
 12. The location of the Champlain River crossing is shown by a solid line with cross-ticks and a dashed line.
 13. The location of the Swanton Ave. crossing is shown by a solid line with cross-ticks and a dashed line.
 14. The location of the Main Ave. crossing is shown by a solid line with cross-ticks and a dashed line.
 15. The location of the Grand Ave. crossing is shown by a solid line with cross-ticks and a dashed line.
 16. The location of the Champlain River crossing is shown by a solid line with cross-ticks and a dashed line.
 17. The location of the Swanton Ave. crossing is shown by a solid line with cross-ticks and a dashed line.
 18. The location of the Main Ave. crossing is shown by a solid line with cross-ticks and a dashed line.
 19. The location of the Grand Ave. crossing is shown by a solid line with cross-ticks and a dashed line.
 20. The location of the Champlain River crossing is shown by a solid line with cross-ticks and a dashed line.