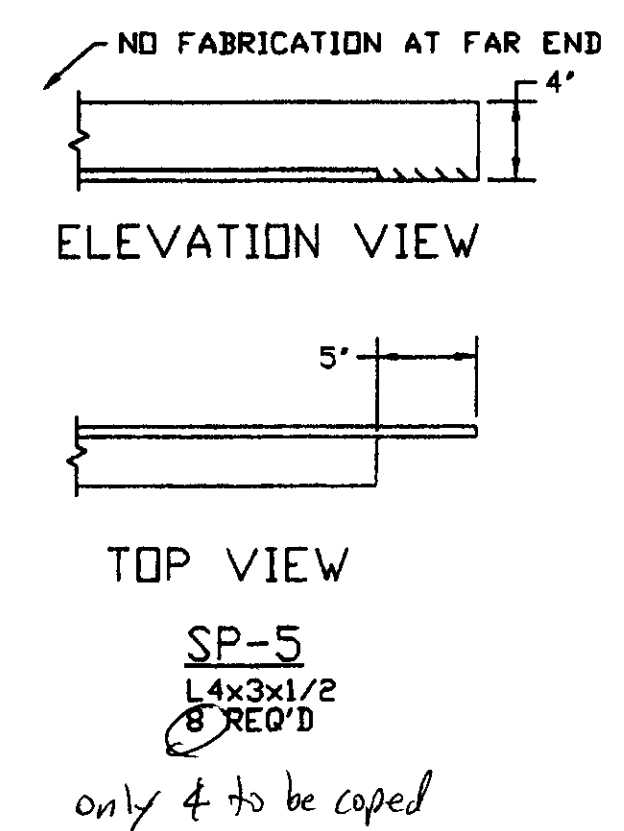
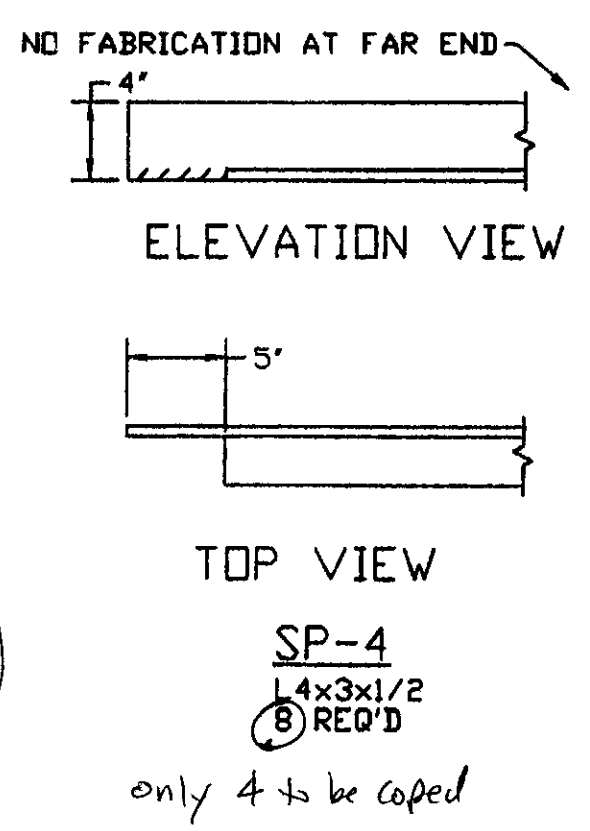
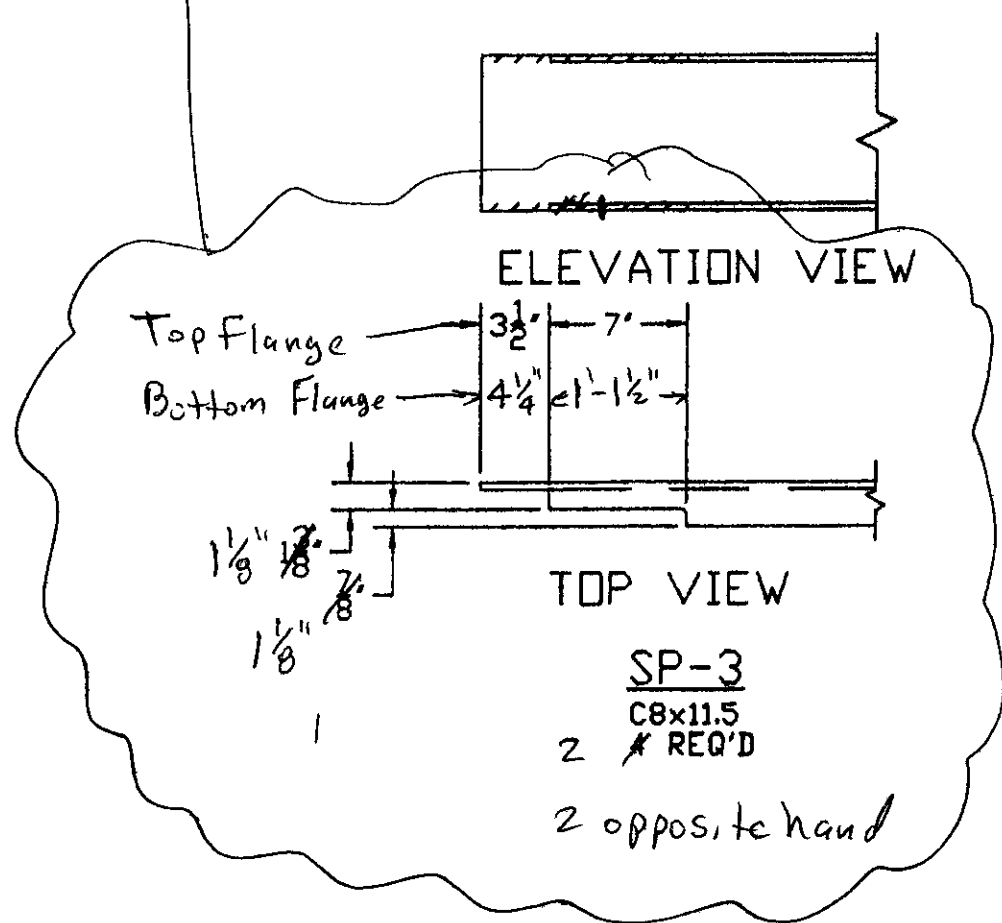


Contractor to field verify all dimensions prior to fabrication



Contractor, please verify that no angle substitutions changed these plate sizes

Swanton STP ST MHTB(1)

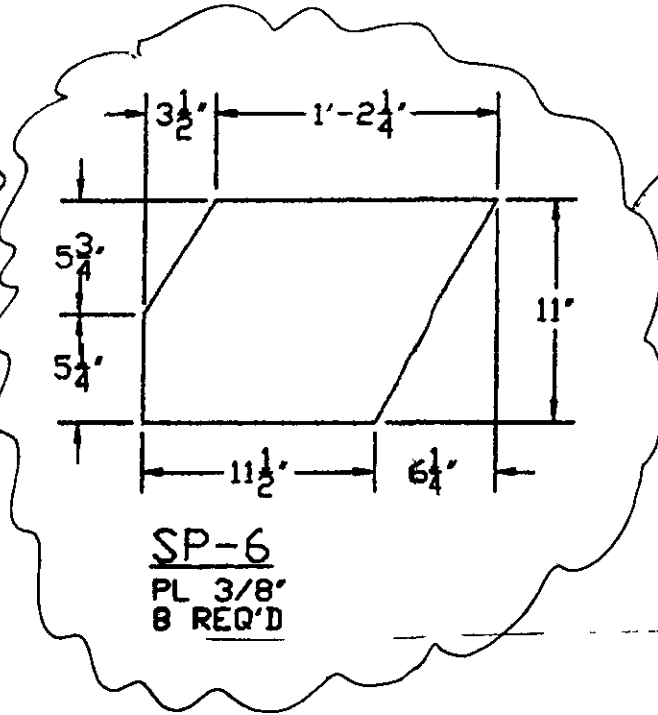
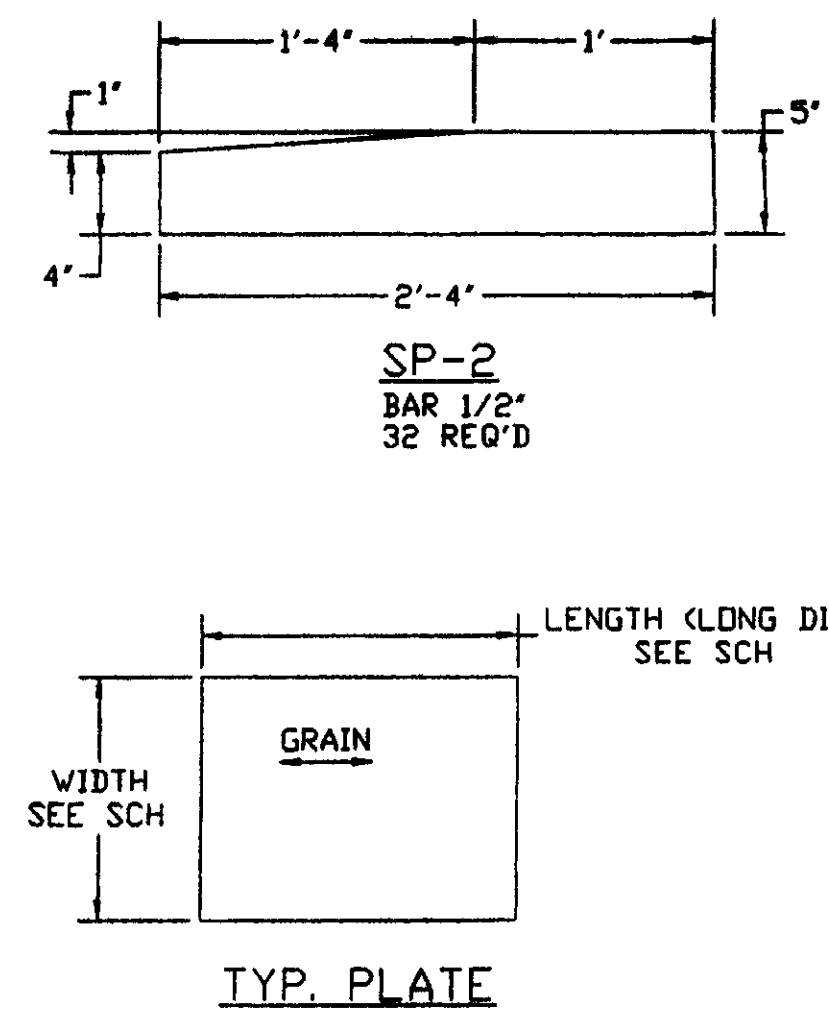
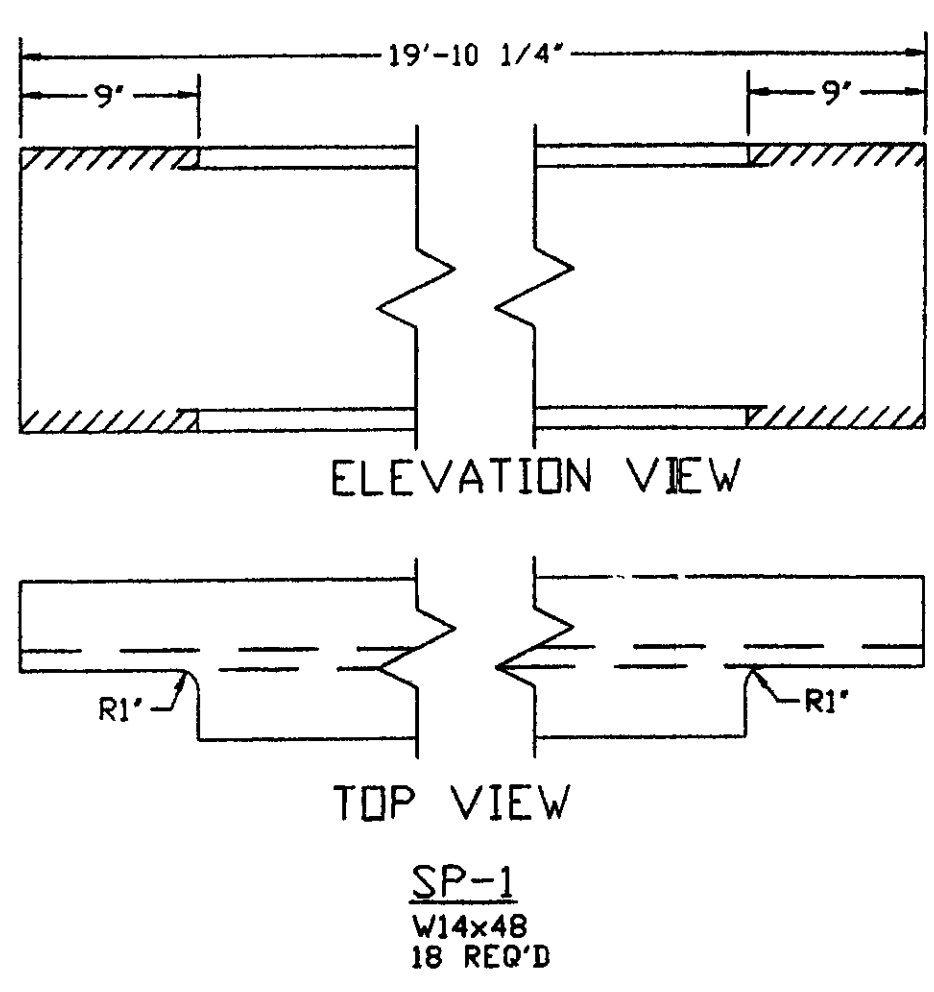
Item	thickness in	width in	length ft	length in	Wt / FT lb	Sheet	Total/Sht ea	Total ea	Wt Ea lb	Total Wt lb	Grade	Location	Ship & Reference	Mark
PL	0.375	14.25	24	5.5		29	2	2	444.7	889.5	50	top ch Cover PL	4 ea. 12'-2.75"	1
L4	0.5	3	30	0	10.2	30	8	8	306	2448.0	50 CVN	bot Chord	16 ea. SP-4	3
L4	0.5	3	30	0	10.2	30	8	8	306	2448.0	50 CVN	bot Chord	16 ea. SP-5	3
PL	0.375	9	1	2 1/2		30	24	24	16 26953	390.5	50	bot Ch Tie PL	24 ea. As shown	6
bar	0.5	5	2	4		30	16	16	19 84954	317.6	50	vert Ch splice PL	32 ea. SP-2	7
PL	0.375	8.5	2	3.5		31	32	32	15.4	491.7	50	bot Ch Tie PL	32 ea. As shown	8
PL	0.375	8.5	2	3.5		32	16	16	14 00987	224.2	50	bot Ch Tie PL	16 ea. As shown	9
PL	0.375	7.75	2	9		33	8	8	17 61536	140.9	50	web splice PL	8 ea. As shown	12
						34	4	4			50	web splice PL	incl Below	
						35	8	12	17 30632	207.7	50	web splice PL	12 ea. As shown	13
						36	8	8			50	web splice PL	incl Below	
						37	8	16	17 9244	286.8	50	web splice PL	16 ea. As shown	14
PL	0.375	6.375	2	2.5		36	16	16			50	web splice PL	incl Below	
						37	16	32	17 96427	574.9	50	web splice PL	32 ea. As shown	16
PL	0.375	6	1	10		40	8	8	14 03646	168.4	50	lateral br Ctr Conn	12 ea. As shown	21
						40	12	12	8 5026	148.0	50	lateral br Ctr Conn	8 ea. As shown	22
PL	0.375	16.625	2	10		44	20	20	60 10688	961.7	50	Gusset G1	16 ea. As shown	25
						44	8	8			50	Gusset G2	incl in above	
						44	4	4			50	Gusset G3-1	20 ea. As shown	26
						44	4	4			50	Gusset G3-2	incl in above	
W14			19	10.25	48	43	18	18	953	17154.0	50	floor beam drawing	18 ea. SP-1	27
CS			30	0	11.5	29	4	4	345.0	1380	50	top chord	4 ea. SP-3	28
PL	0.375	11	1	5.75				8	20.8	166.1	50	bot Ch Tie PL	8 ea. SP-6	29

Notes

- All material listed as Grade 50 is AASHTO M270, grade 50. All material listed as Grade 50 CVN is to have the Charpy V-Notch test performed for each heat number representing all pieces listed. CVN is to be zone 2. All Grade 50 CVN material is AASHTO M270, grade 50. All material listed as A36 is to be ASTM A36.
- Sheet numbers correspond to the VAOT contract drawings.

RECEIVED
 CK'D BY: OK'D BY: *[Signature]*
 MAY 22 2008
 RESUBMIT: APPROVED: *[Signature]*
 BY: RLS DATE: 5/30/08

▲ Note: All details on this drawing were supplied by CCS Constructors. Casco Bay Steel Structures assumes no responsibility for errors in detailing. Casco Bay Steel Structures will fabricate to details shown.



Contractor to field verify dimensions prior to fabrication

OUT FOR APPROVAL	5/13/08														
OUT FOR APPROVAL															
ISSUED TO SHOP															
FIELD & OFFICE															
Added Note	5/20/08														
REV.	REMARKS	DATE	DWN	CHK	APP.	Q.A.	NO.	DIA.	LGT.	TYPE	WASHER				
PROJECT NO. STP-ST-MHTB-1		STATE PROJECT NO.													
MATERIAL: ASTM A572-50		ELECTRODES:				HOLES:				SHOP BOLTS:					
SURFACE PREP. & PAINT:															
FIELD APPLIED															
DESCRIPTION: Truss Rebuild Parts												DRAWN BY		DATE	
JOB: RAIL TRAIL OVER MISSISSAQUI RIVER												CCS			
Truss Rebuild												CHKD BY			
Swanton, VT												CCS			
PROJECT # STP-ST-MHTB (1)												APPROV BY			
												Q.A.			
CUSTOMER: C.C.S. - VT A.O.T															
CASCO BAY STEEL STRUCTURES, INC.												JOB NO.		DRG. NO.	
75 SPRING HILL ROAD SACO, MAINE 04072												S.O.#079		/	
PHONE (207) 282-7360 FAX (207) 282-1179												REV.		▲	