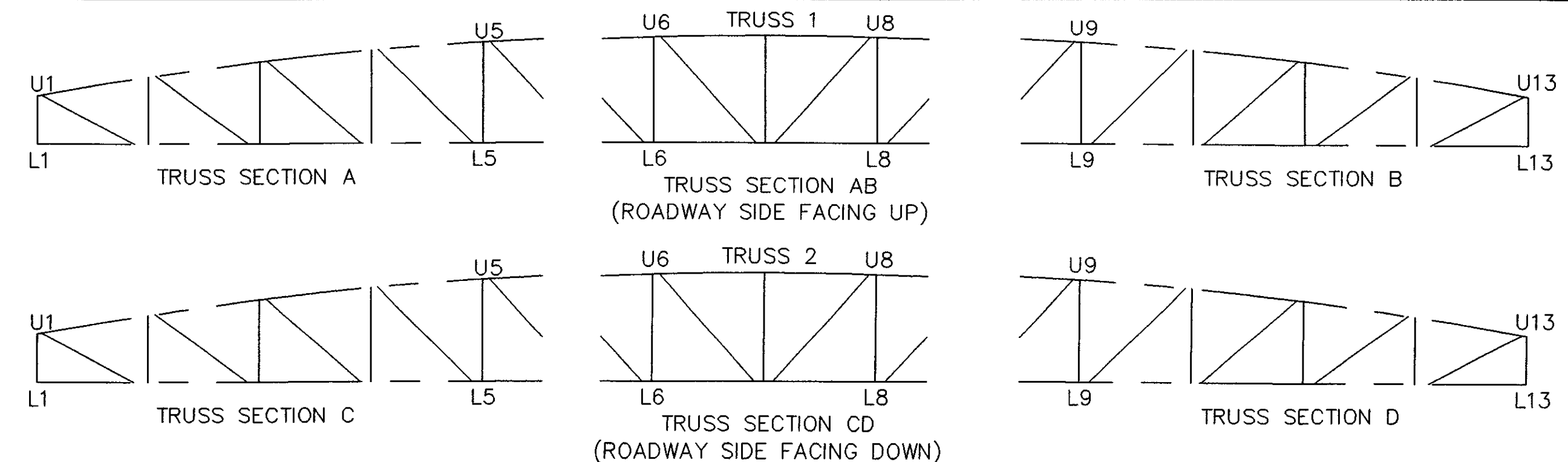
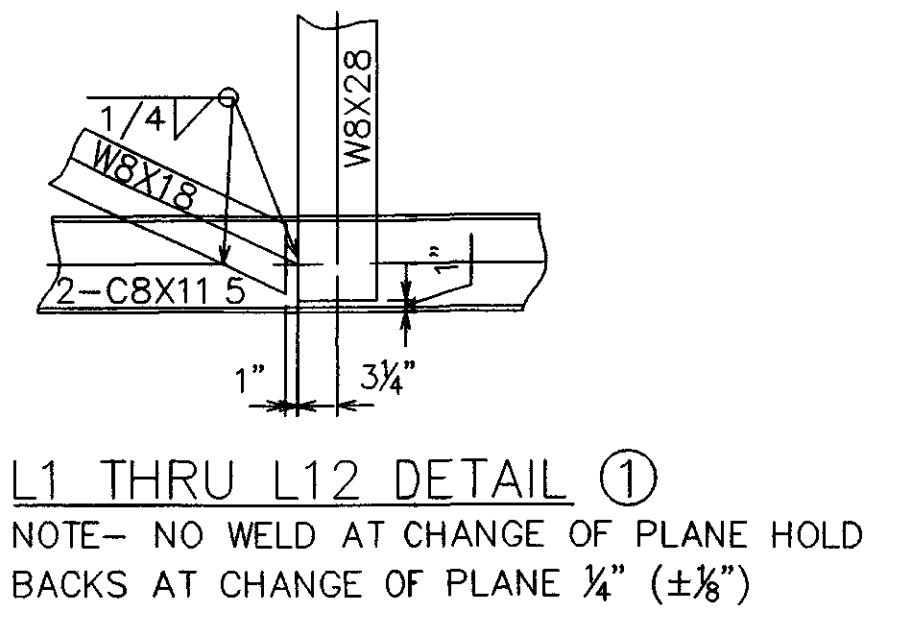
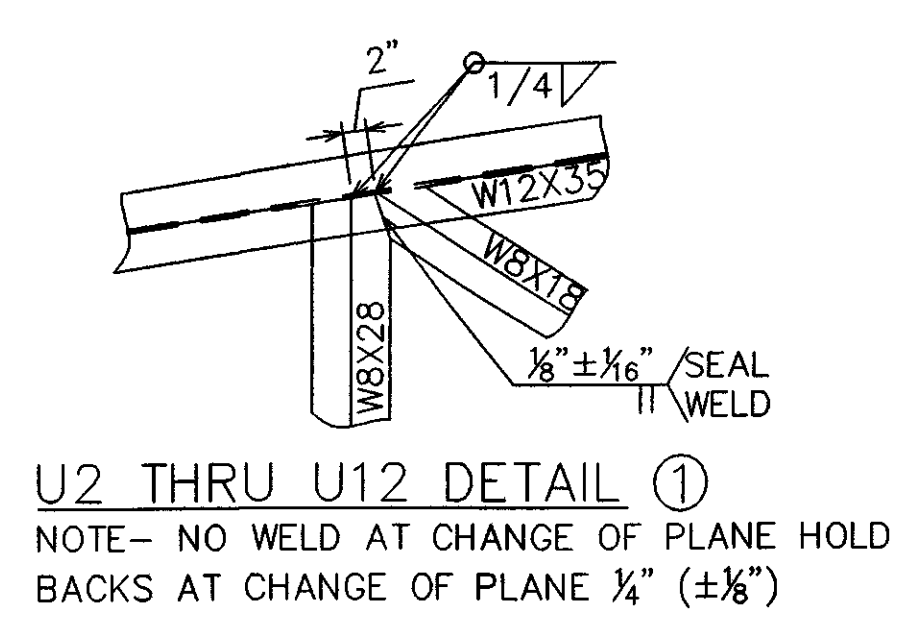
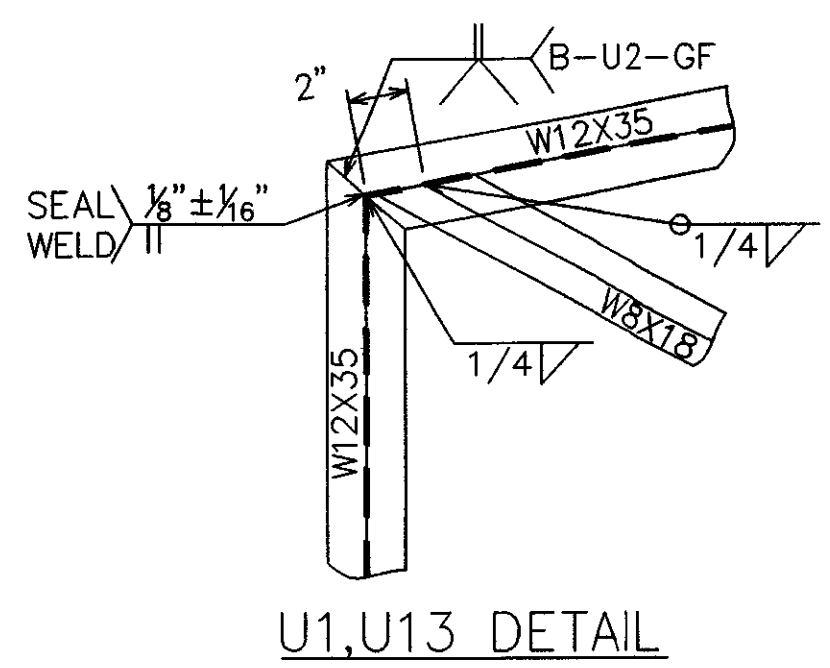
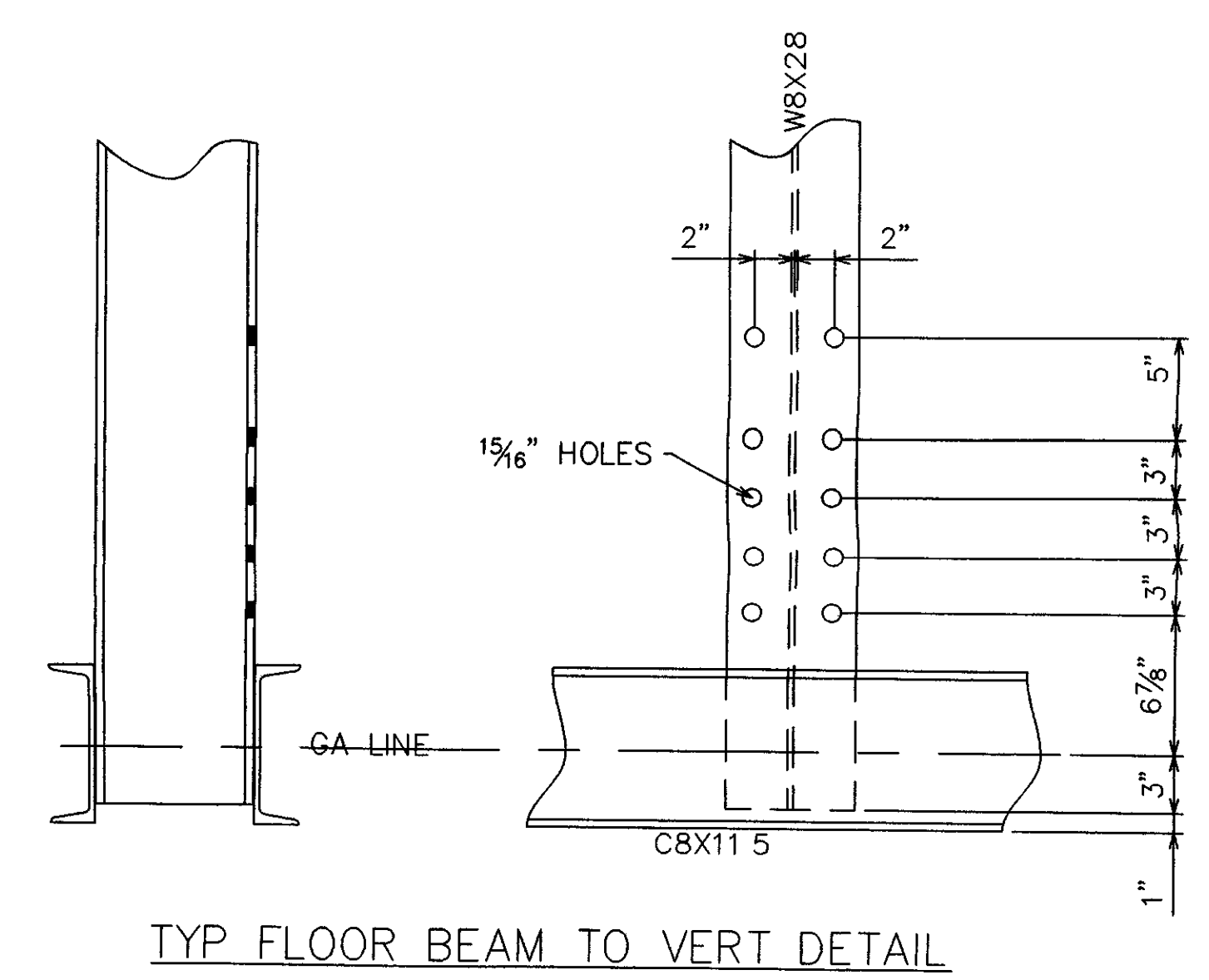
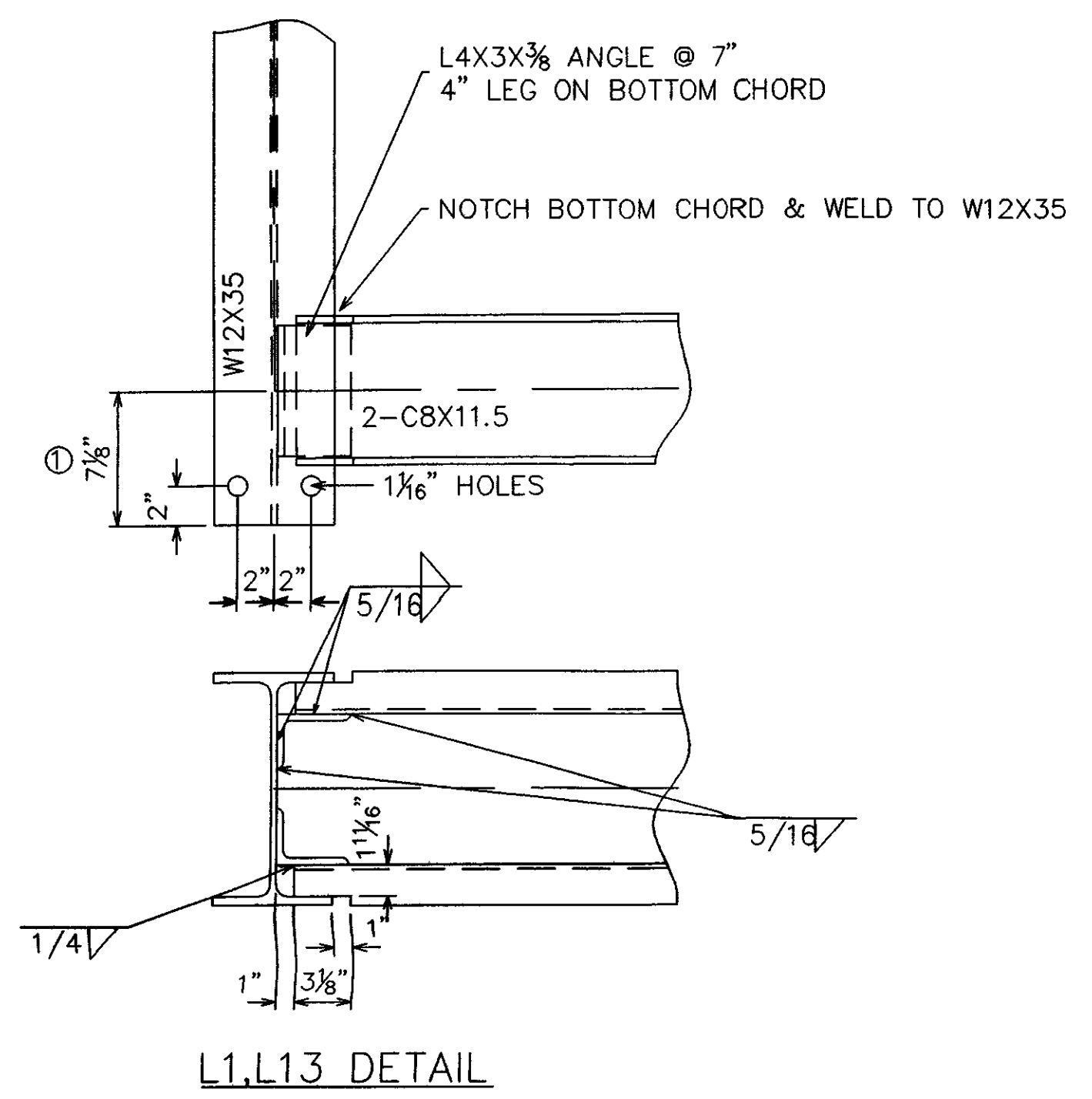


MATERIAL SCHEDULE

PC QTY	DESCRIPTION	MATERIAL	FINISH	WEIGHT
1	ASSY TRUSS SECTION A	A572	Galvanized	4737#
1	ASSY TRUSS SECTION AB	A572	Galvanized	3528#
1	ASSY TRUSS SECTION B	A572	Galvanized	4737#
1	ASSY TRUSS SECTION C	A572	Galvanized	4737#
1	ASSY TRUSS SECTION CD	A572	Galvanized	3528#
1	ASSY TRUSS SECTION D	A572	Galvanized	4737#
4	PCS T1 W12x35 @ 45'-3 1/2"	A572	Galvanized	1585#
2	PCS T2 W12x35 @ 33'-8 11/16"	A572	Galvanized	1180#
4	PCS D1 W8x18 @ 10'-11 3/16"	A572 CVN	Galvanized	197#
4	PCS D2 W8x18 @ 11'-7 13/16"	A572 CVN	Galvanized	210#
4	PCS D3 W8x18 @ 12'-5 9/16"	A572 CVN	Galvanized	224#
4	PCS D4 W8x18 @ 13'-1 13/16"	A572 CVN	Galvanized	237#
4	PCS D5 W8x18 @ 4'-10 3/16"	A572 CVN	Galvanized	87#
4	PCS D6 W8x18 @ 8'-9 15/16"	A572 CVN	Galvanized	159#
4	PCS D7 W8x18 @ 13'-10 11/16"	A572 CVN	Galvanized	250#
4	PCS V1 W8x28 @ 5'-4 9/16"	A572	Galvanized	151#
4	PCS V2 W8x28 @ 6'-5 9/16"	A572	Galvanized	181#
4	PCS V3 W8x28 @ 7'-10 1/16"	A572	Galvanized	219#
4	PCS V4 W8x28 @ 8'-10 3/4"	A572	Galvanized	249#
4	PCS V5 W8x28 @ 9'-7 11/16"	A572	Galvanized	270#
4	PCS V6 W8x28 @ 10'-1 "	A572	Galvanized	282#
2	PCS V7 W8x28 @ 10'-2 13/16"	A572	Galvanized	287#
4	PCS B1 C8x11.5 @ 44'-8"	A572 CVN	Galvanized	513#
2	PCS B2 C8x11.5 @ 33'-8 1/2"	A572 CVN	Galvanized	388#
70	PCS STIFFENERS PL 1/2" x 6" x 8 1/8"	A572	Galvanized	7#
8	PCS BOTTOM CHORD SHOE ANGLE L4x3x3/8 @ 7"	A572	Galvanized	5#
2	ASSY FLOOR BEAM 1 W14x30 @ 13'-6 5/8"	A572 CVN	Galvanized	407#
11	ASSY FLOOR BEAM 2 W14x30 @ 13'-11"	A572 CVN	Galvanized	418#
26	PCS FLOOR BEAM END PLATE PL 1/2" x 7" x 18"	A572 CVN	Galvanized	18#
48	PCS ANCHOR PLATE H PL 3/4" x 6" x 7 3/4"	A572	Galvanized	10#
8	ASSY TOP CHORD SPLICE PLATE PL 3/8" x 6 1/2" x 23 1/2"	A572	Galvanized	16#
8	ASSY TOP CHORD SPLICE PLATE PL 3/8" x 9" x 16"	A572	Galvanized	15#
16	ASSY TOP CHORD SPLICE PLATE PL 3/8" x 2 1/2" x 23 1/2"	A572	Galvanized	6#
8	ASSY DIAGONAL SPLICE PL 3/8" x 5 1/4" x 13 1/2"	A572 CVN	Galvanized	8#
8	ASSY DIAGONAL SPLICE PL 3/8" x 6" x 11"	A572 CVN	Galvanized	7#
16	ASSY BOTTOM CHORD SPLICE PL 3/8" x 6" x 32"	A572 CVN	Galvanized	20#
12	ASSY U BOLT WITH 1/4" PLATE	A572	Galvanized	
24	ASSY LATERAL ROD 6" THD BOTH ENDS W/2N,2W 1" Dia Round Rod @ 15'-9"	A572	Galvanized	42#
8	ASSY TRUSS BEARING ANGLE L6x4x1/2 @ 8"	A572	Galvanized	11#
2	ASSY FIXED SOLE PLATE PL 1" x 14" x 24"	A572	Galvanized	95#
2	ASSY FIXED CONSLIDE PAD 1"x10"x14"			
2	ASSY FIXED MASONRY PLATE PL 1" x 14" x 24"	A572	Galvanized	95#
2	ASSY EXPANSION SOLE PLATE PL 3/4" x 14" x 24"	A572	Galvanized	72#
2	ASSY EXPANSION SLIDING PLATE 3/8"x12"x15" WITH 20GA SS			
2	ASSY EXPANSION CONSLIDE PAD 1"x10"x14"			
2	ASSY EXPANSION MASONRY PLATE PL 3/4" x 14" x 24"	A572	Galvanized	72#
8	ASSY ANCHOR BOLT PLATE WASHER PL 1/4" x 4" x 6"	A572	Galvanized	2#
273	ASSY 7/8" DIA X 2 1/4" TYPE 1 B N W	A325	Galvanized	
26	ASSY 7/8" DIA X 2 1/2" TYPE 1 B N W	A325	Galvanized	
74	ASSY 5/8" DIA X 1 3/4" TYPE 1 B N W	A325	Galvanized	
311	ASSY 5/8" DIA X 2 1/4" TYPE 1 B N W	A325	Galvanized	
138	ASSY 5/8" DIA X 2 1/2" TYPE 1 B N W	A325	Galvanized	



TRUSS MATCH MARKINGS  
 NOTE- MATCH MARK LETTERS STAMPED ON BOTTOM CHORD CHANNELS & MEMBERS AT CONNECTIONS WITH 1/2" LETTER STAMPS



RECEIVED  
 OK'D BY: HKB OK'D BY: \_\_\_\_\_  
 AUG 18 2008  
 RESUBMIT: \_\_\_\_\_ APPROVED: \_\_\_\_\_  
 BY: A.G.S. DATE: 8/25/08

NO.	DATE	REVISIONS	BY
1	7-9-08	CONNECTION DETAILS & BEARINGS	CRM
2	8-12-08	REVISED PER REDLINE	CRM

123'-2" C/C BEARINGS  
 TOWN OF SWANTON  
 12'-0" CLEAR WALKWAY

FRANKLIN COUNTY, VT

DESIGN SCOTT	DRAWN CRM	DATE 4-21-08	DRAWING NO 80691	SHEET
CHECK/DATE	FABRICATOR US BRIDGE CORP	JOB NO: 41217	2 OF 4	

NOTE DRAWINGS RELATIVE DO NOT SCALE

*Handwritten signature and date: 8/12/08*