

DESIGN SPECIFICATIONS
 AASHTO STANDARD SPECIFICATIONS FOR HIGHWAY BRIDGES, 17th EDITION (2002), DIVISION I, WITH ALL INTERIM SPECIFICATIONS IN EFFECT

LIVE LOAD
 AASHTO H10
 85 PSF PEDESTRIAN REDUCED AS ALLOWED BY AASHTO GUIDE SPECIFICATIONS FOR DESIGN OF PEDESTRIAN BRIDGES

MATERIAL
 ALL SUPERSTRUCTURE STEEL SHALL BE AASHTO M270 (ASTM A709), GRADE 50 ALL STEEL GALVANIZED AFTER FABRICATION

ALL FASTENERS UNLESS NOTED OTHERWISE HIGH STRENGTH BOLTS, ASTM A325 TYPE 1 (GALV) WITH ASTM A563 GRADE C NUT AND ONE ASTM F436 WASHER PER BOLT. FASTENERS SHALL BE FURNISHED WITH ROTATIONAL CAPACITY TEST

CONSTRUCTION/FABRICATION
 AASHTO STANDARD SPECIFICATIONS FOR HIGHWAY BRIDGES, 17th EDITION (2002), DIVISION II, WITH ALL INTERIM SPECIFICATIONS IN EFFECT

WELDING
 ALL WELDING SHALL BE IN ACCORDANCE WITH AASHTO/AWS D1.5 BRIDGE WELDING CODE AND THE AASHTO FRACTURE CONTROL, WHERE APPLICABLE

NON-DESTRUCTIVE TESTING OF WELDS SHALL BE PERFORMED AS FOLLOWS

FILLET WELDS - VISUAL - 100%
 - MT. - ONE FT IN 10' EVERY WELD

FIELD TOUCHUP
 THREADS OF LATERAL BRACING RODS SHALL BE FIELD COATED WITH ZINC RICH PAINT AFTER FINAL ADJUSTMENTS OF RODS. PAINT SHALL BE APPLIED WITH BRUSH

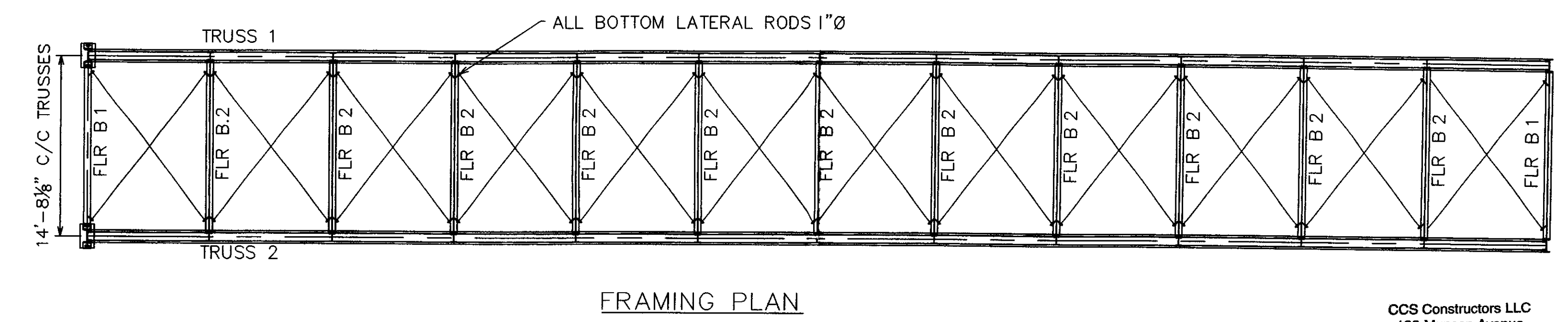
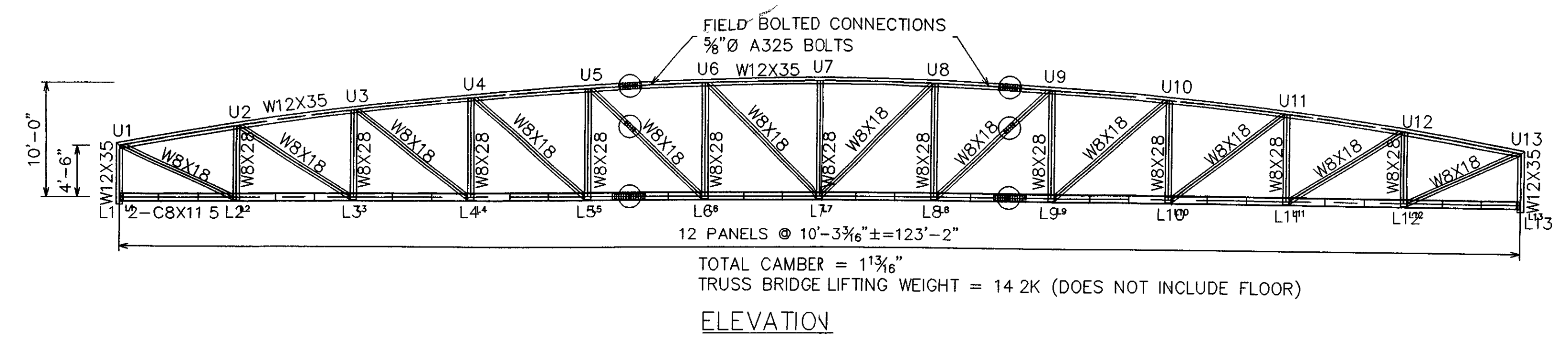
TRUSS SHOE REACTION

DEAD LOAD	26.50K
VEHICLE LIVE LOAD (H 10)	19.00K
IMPACT	3.80K
PEDESTRIAN LIVE LOAD (65 PSF)	24.02K

BOLT CHART	7/8" A325 TYPE 1 GALVANIZED				
	BOLT LENGTH				
LOCATION	2 1/4"	2 1/2"	2 3/4"	3"	3 1/4"
FLOORBEAM TO TRUSS	260				
TRUSS BEARING ANGLE TO TRUSS		16			
TOTAL REQ'D	260	16			
TOTAL ORDERED	273	26			

BOLT CHART	5/8" A325 TYPE 1 GALVANIZED		
	BOLT LENGTH		
LOCATION	1 3/4"	2 1/4"	2 1/2"
TOP CHORD SPLICE FLANGE			128
TOP CHORD SPLICE WEB		72	
DIAGONAL SPLICE FLANGE	64		
DIAGONAL SPLICE WEB		32	
BOTTOM SPLICE FLANGE		192	
TOTAL REQ'D	64	296	128
TOTAL ORDERED	74	311	138

RECEIVED
 CK'D BY: HKB OK'D BY: _____
 AUG 18 2008
 RESUBMIT: _____ APPROVED: ✓
 BY: RGS DATE: 9/25/08



CCS Constructors LLC
 138 Munson Avenue
 Morrisville, VT 05661
 Ph 802-888-7701 f 802-888-4746

NO.	DATE	REVISIONS	BY
1	7-9-08	CONNECTION DETAILS & BEARINGS	CRM
2	8-12-08	REVISED PER REDLINE	CRM

123'-2" C/C BEARINGS
 TOWN OF SWANTON
 FRANKLIN COUNTY, VT

DESIGN: SCOTT	DRAWN: CRM	DATE: 4-21-08	DRAWING NO: 80691	SHEET
CHECK/DATE:	FABRICATOR: US BRIDGE CORP	JOB NO: 41217	1 OF 4	

NOTE: DRAWINGS RELATIVE DO NOT SCALE