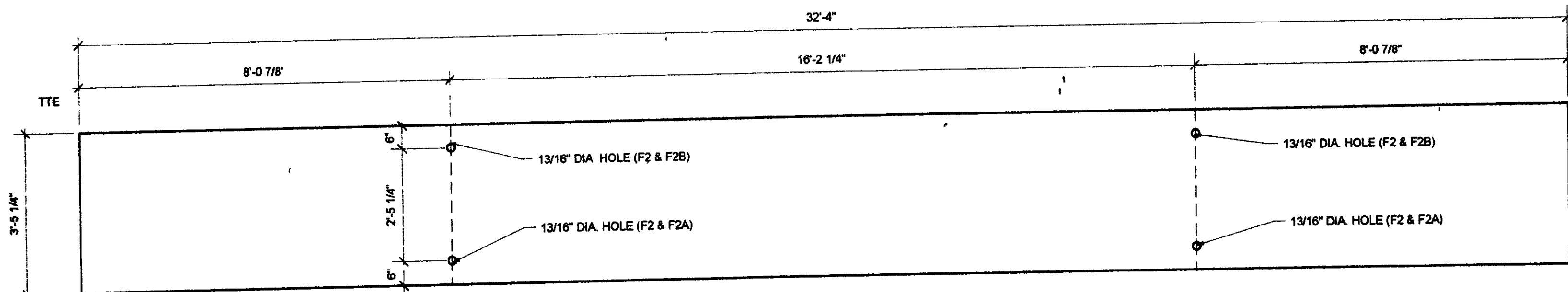
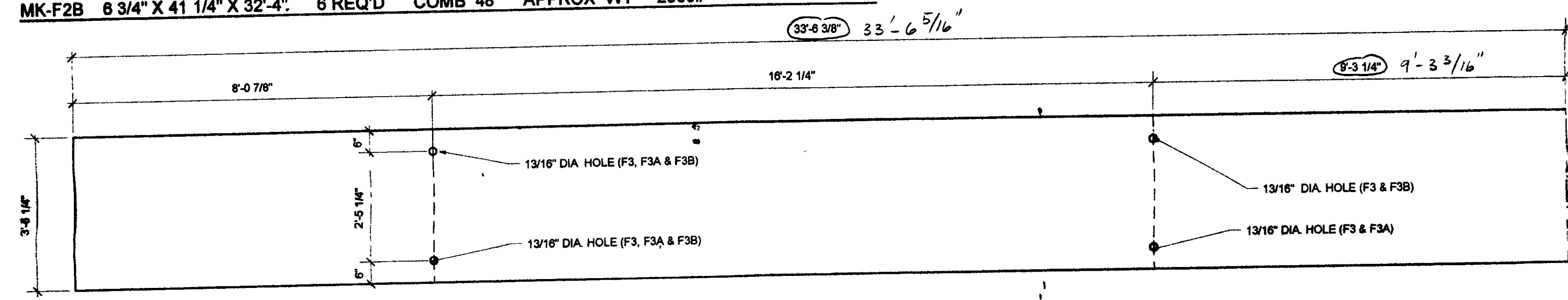


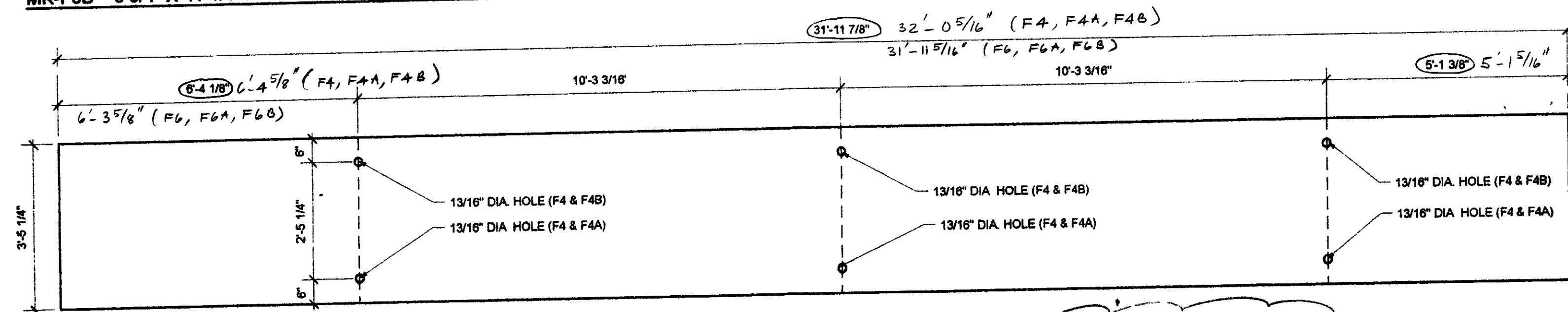
MK-F1 6 3/4" X 41 1/4" X 33'-6 3/4" 4 REQ'D COMB 48 APPROX. WT = 2870#
 MK-F1A 6 3/4" X 41 1/4" X 33'-6 3/4" 2 REQ'D COMB 48 APPROX. WT = 2870#
 MK-F1B 6 3/4" X 41 1/4" X 33'-6 3/4" 2 REQ'D COMB 48 APPROX. WT = 2870#



MK-F2 6 3/4" X 41 1/4" X 32'-4" 12 REQ'D COMB 48 APPROX. WT = 2800#
 MK-F2A 6 3/4" X 41 1/4" X 32'-4" 6 REQ'D COMB 48 APPROX. WT = 2800#
 MK-F2B 6 3/4" X 41 1/4" X 32'-4" 6 REQ'D COMB 48 APPROX. WT = 2800#

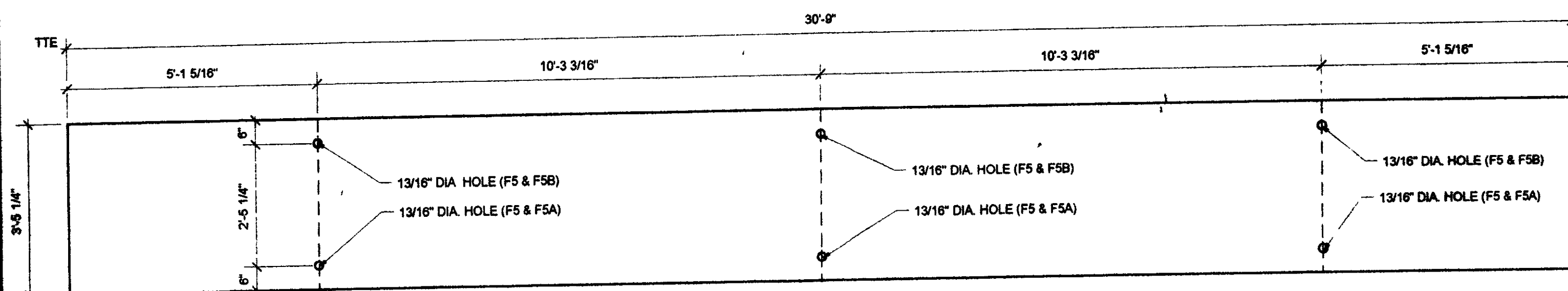


MK-F3 6 3/4" X 41 1/4" X 33'-6 3/8" 4 REQ'D COMB 48 APPROX. WT = 2880#
 MK-F3A 6 3/4" X 41 1/4" X 33'-6 3/8" 2 REQ'D COMB 48 APPROX. WT = 2880#
 MK-F3B 6 3/4" X 41 1/4" X 33'-6 3/8" 2 REQ'D COMB 48 APPROX. WT = 2880#

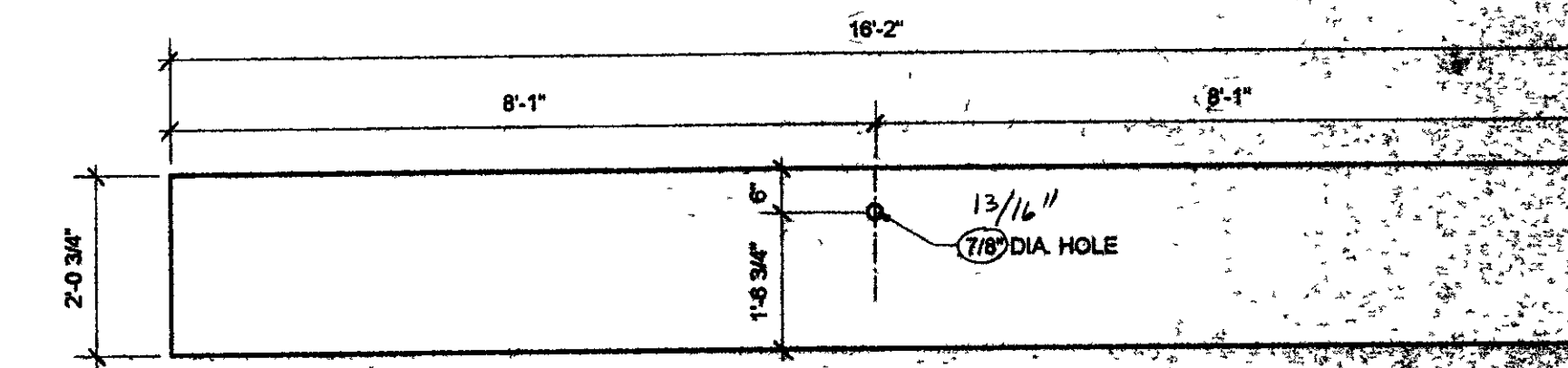


MK-F4 6 3/4" X 41 1/4" X 31'-11 7/8" 2 @REQ'D COMB 48 APPROX. WT = 2750#
 MK-F4A 6 3/4" X 41 1/4" X 31'-11 7/8" 1 @REQ'D COMB 48 APPROX. WT = 2750#
 MK-F4B 6 3/4" X 41 1/4" X 31'-11 7/8" 1 @REQ'D COMB 48 APPROX. WT = 2750#

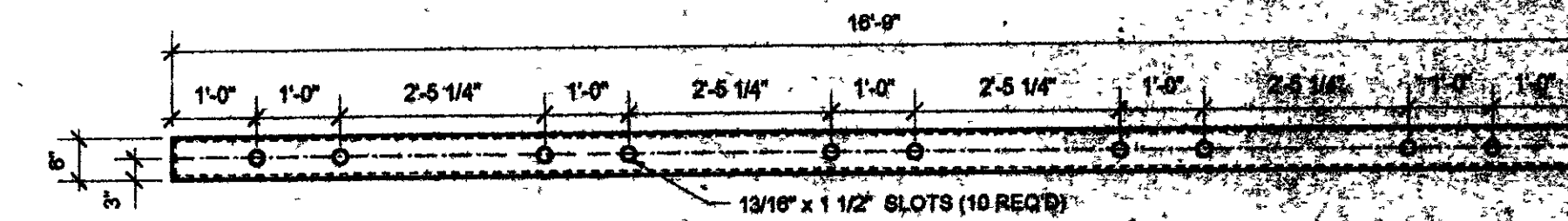
ADD F6, F6A & F6B



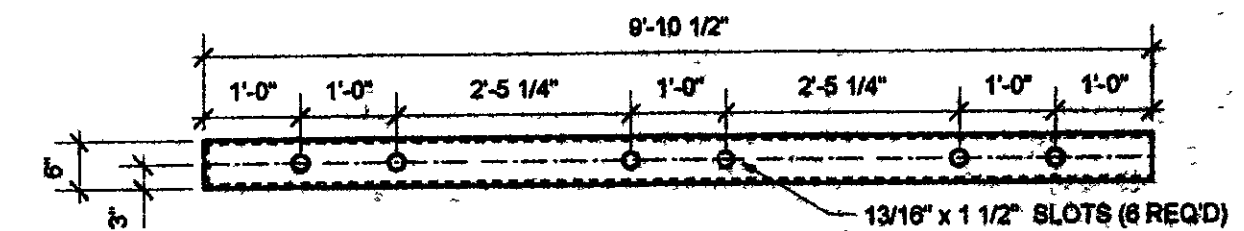
MK-F5 6 3/4" X 41 1/4" X 30'-9" 4 REQ'D COMB 48 APPROX. WT = 2640#
 MK-F5A 6 3/4" X 41 1/4" X 30'-9" 2 REQ'D COMB 48 APPROX. WT = 2640#
 MK-F5B 6 3/4" X 41 1/4" X 30'-9" 2 REQ'D COMB 48 APPROX. WT = 2640#



MK-F3C 6 3/4" X 24 3/4" X 16'-2" 4 REQ'D COMB 48 APPROX. WT = 850#



MK-ST2 MC 6 X 16.3 16'-9" LG. 2 REQ'D



MK-ST1 MC 6 X 16.3 9'-10 1/2" LG. 30 REQ'D

CONTRACTOR
 PLEASE MAKE SURE DECK SURFACES
 ADJACENT TO THE EXPANSION JOINT
 ARE AT THE SAME ELEVATION.

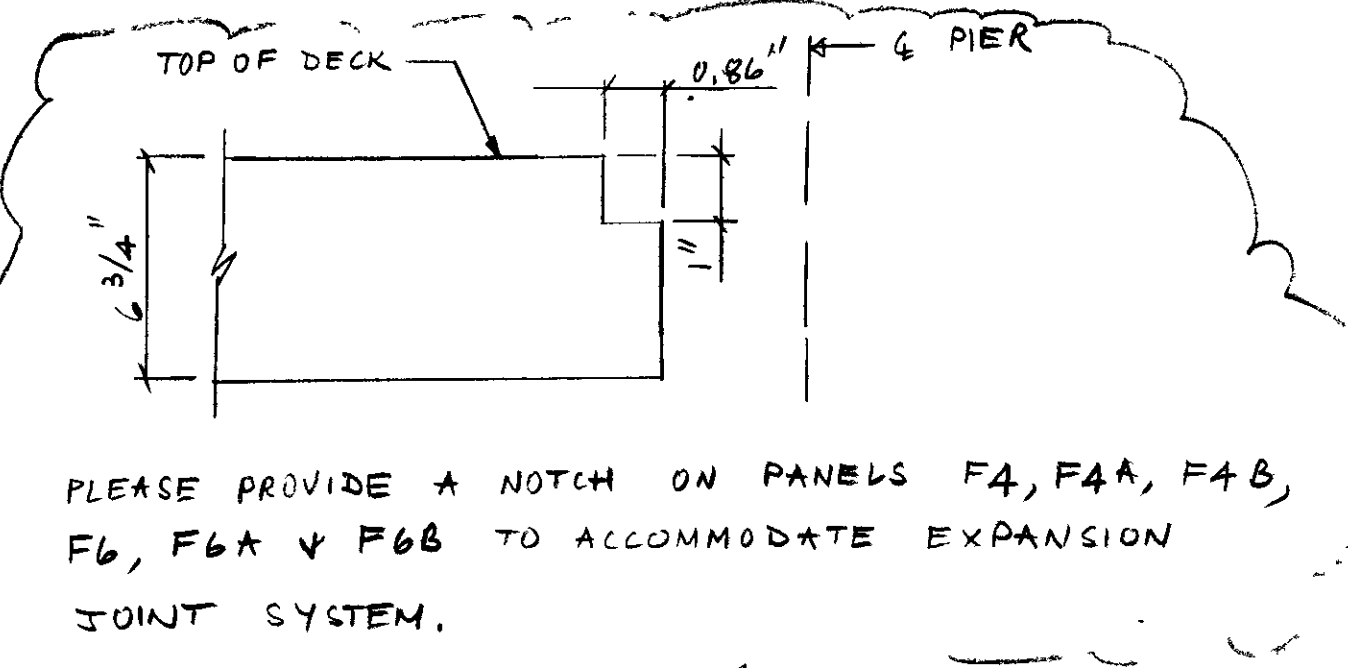
RECEIVED
 JUL 3 12 008
 BY RGS DATE 7/06/08

LAMINATED CONCEPTS INC. LIST OF LAMINATED TIMBER MATERIALS

10	08	460	LT	width	depth	length	ft	in	grade	species	remarks	bl tot
8	F1 A & B	6.75	41.25	33	6.75	COMB 48	SYP	FAB REQ'D				6230.04
24	F2 A & B	6.75	41.25	32	4	COMB 48	SYP	FAB REQ'D				18005.62
8	F3 A & B	6.75	41.25	32	6.375	COMB 48	SYP	FAB REQ'D				6038.61
8	F4 A & B	6.75	41.25	31	11.875	COMB 48	SYP	FAB REQ'D				5898.07
8	F5 A & B	6.75	41.25	30	9	COMB 48	SYP	FAB REQ'D				5707.87
4	F3C	6.75	24.75	16	2	COMB 48	SYP	FAB REQ'D				900.28
18	SL1	7.25	14	13	9	COMB 48	SYP	FAB REQ'D				2093.44
11	SL2	7.25	6.75	13	9	COMB 48	SYP	FAB REQ'D				616.82
11	SL3	7.25	6.75	13	9	COMB 48	SYP	FAB REQ'D				616.82
2	SL4	7.5	6.75	15	8.25	COMB 48	SYP	FAB REQ'D				132.36
2	SL5	7.5	6.75	15	8.25	COMB 48	SYP	FAB REQ'D				132.36
2	C1	8	17.625	13	9	COMB 48	SYP	FAB REQ'D				323.13

LAMINATED CONCEPTS INC. LIST OF HARDWARE MATERIALS

10	08	460	LT	description	qty	dia.	lg.	wt	in	ft	type
				bolts	372	3/4"	11"	F			Hot Head Bolt
				Deck to steel beams	372	3/4"	12"	F			Hot Head Bolt
				Sleeper slot rods	23	1/2"	18"	F	F	F	Through Bolt
				Deck to stiffeners	288	3/4"	9"	F	F	F	Through Bolt
				Deck to Abutment angles	24	3/4"	6"	F			Hot Head Bolt
				Deck to Cap angles	24	3/4"	6"	F			Hot Head Bolt
				Cap angles to cap	24	3/4"	11"	F	F	F	Hot Head Bolt
					70	1/2"					Flat Washers
					1050	3/4"					Flat Washers
					35	1/2"					Hot Nut
					300	3/4"					Hot Nut



PLEASE PROVIDE A NOTCH ON PANELS F4, F4A, F4B, F6, F6A & F6B TO ACCOMMODATE EXPANSION JOINT SYSTEM.

NOTE: wt = weather type at both ends, wn = weather type at one end, n = none, species type (F = Fir, S = Spruce, P = Pine, D = Douglas Fir)
 description qty dia. lg. wt in ft type
 steel Deck Cap Steel 744 3/8" 18" 2000 Deck Cap
 Deck Spacer Plate 744 5/8" 6.25" 9" Deck Cap
 Abutment angles 24 1/2" 6" 24" 1/2" Deck Cap
 Stiffener STT MC 6 x 16.3 30 6" 16.3" 30" Deck Cap
 Stiffener STT MC 6 x 16.3 2 2" 16.3" 2" Deck Cap
 Deck to Cap Angles 5 x 5 48 1/2" 18" 48" Deck Cap



DRAWN	DATE	NO	DATE	BY	REVISIONS
MSS	6/4/08				
CHKD	DATE	1	7/22/08	MS	revise panels
APPD	DATE				
SCALE					

PROJECT NAME	STEPHENSON BRIDGE
TOWN	TOWN OF SWANSON
COUNTY	COUNTY OF FRANKLIN
DATE	7/22/08
SCALE	AS SHOWN