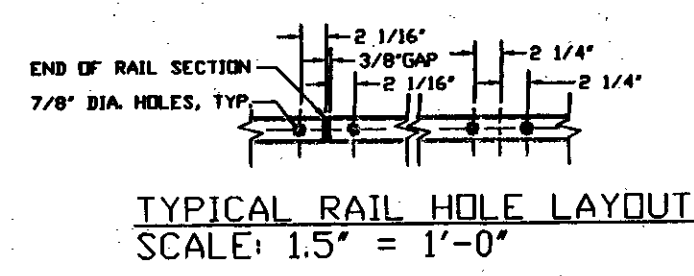
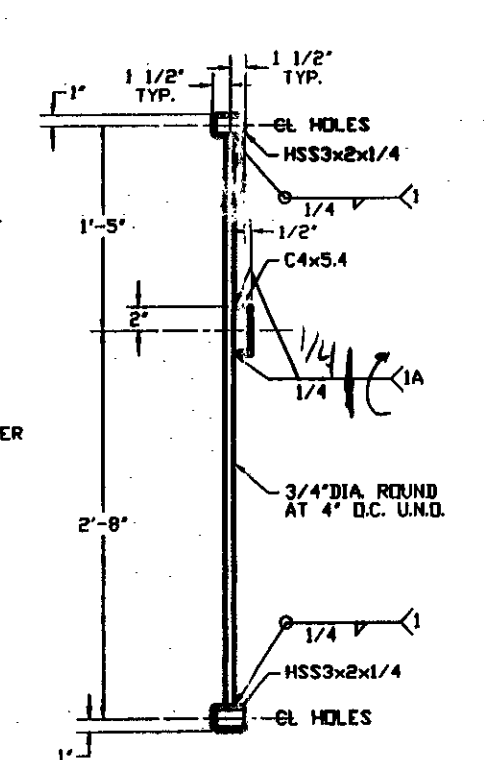


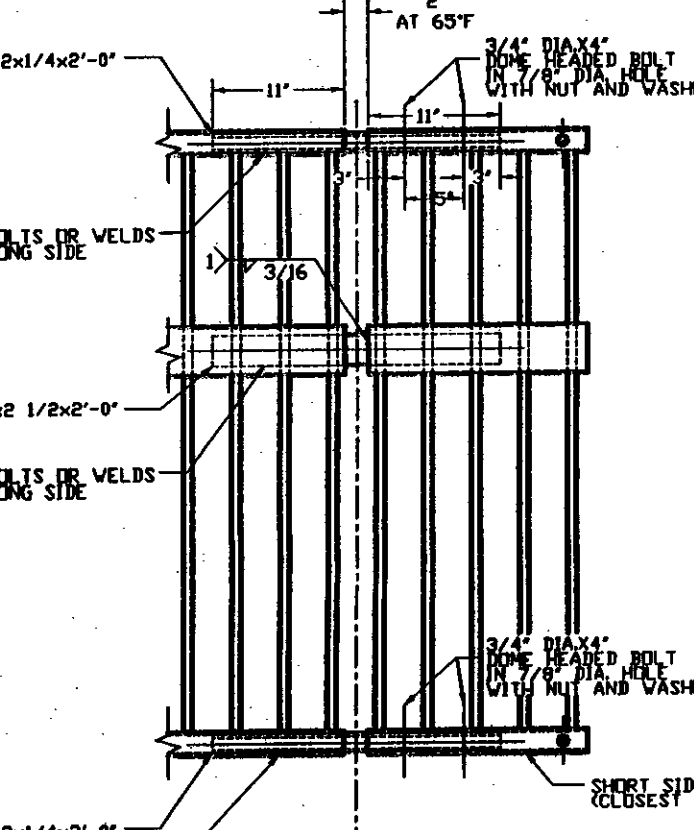
PLAN SCALE: 1/8" = 1'-0"



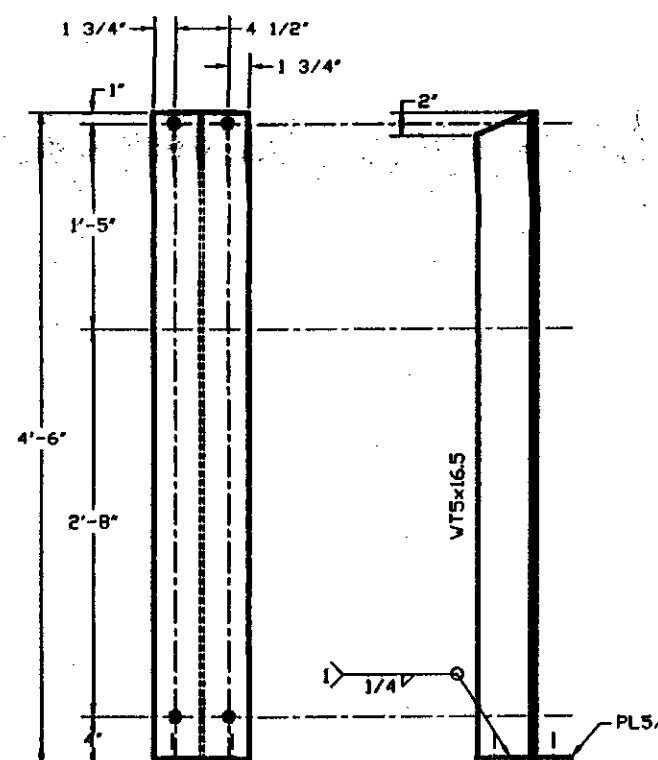
TYPICAL RAIL HOLE LAYOUT SCALE: 1.5" = 1'-0"



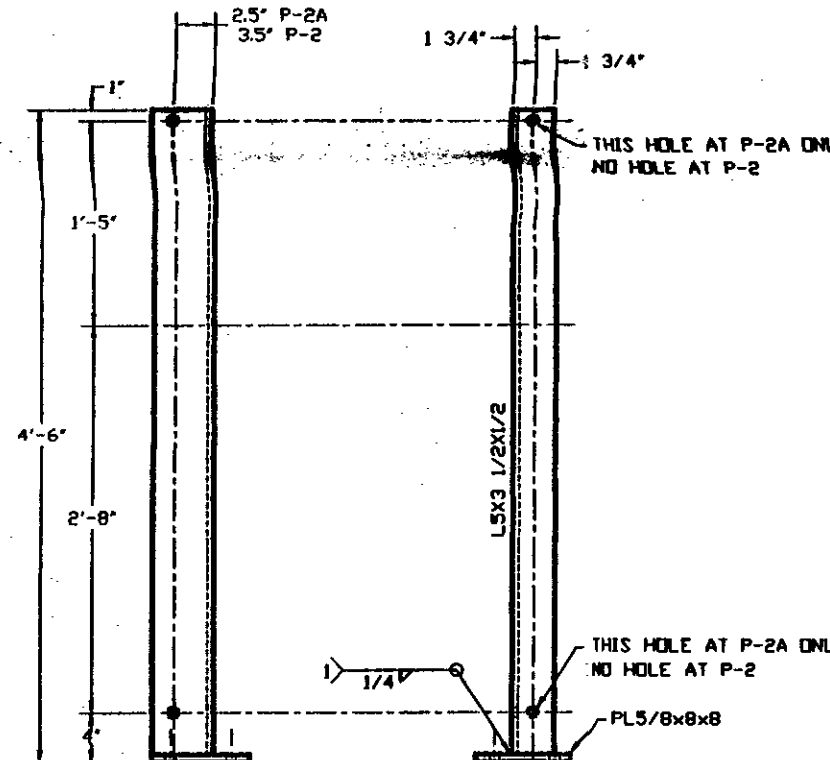
TYPICAL RAIL SECTION SCALE: 1.5" = 1'-0"



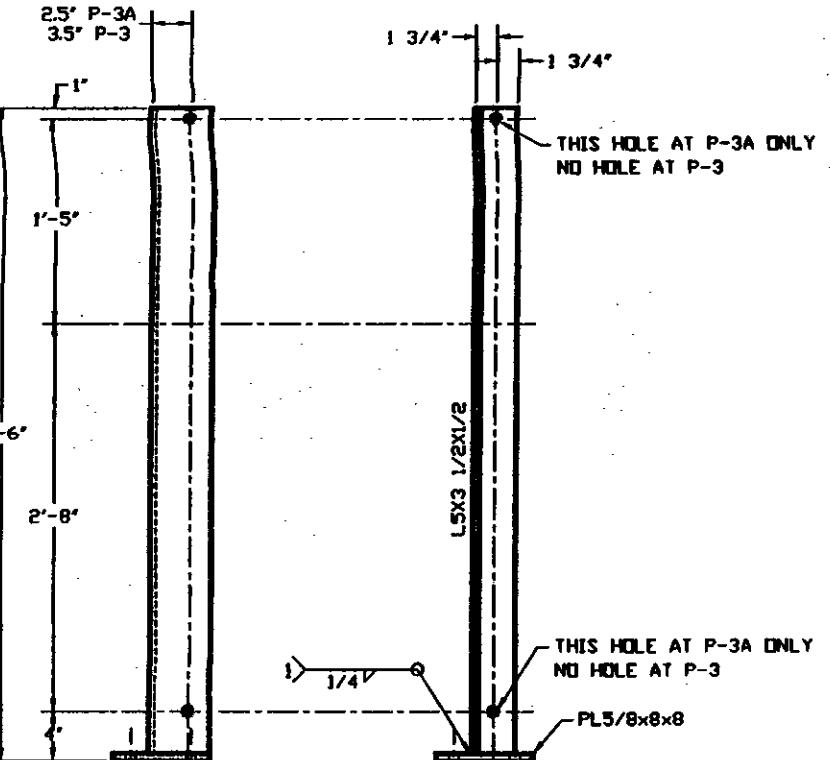
EXPANSION JOINT DETAIL SCALE: 1.5" = 1'-0"



TYPICAL WT POST, P-1 90 EACH REQUIRED SCALE: 0.75" = 1'-0"



L POST, P-2 & P-2A 8 EACH REQUIRED SCALE: 1.5" = 1'-0"



L POST, P-3 & P-3A 8 EACH REQUIRED SCALE: 1.5" = 1'-0"

- NOTES:
- 1) ALL PLATE, VTS, AND ANGLES ASHTO #270, GRADE 36, ALL HSS ASHTO #500, GRADE B
 - 2) PAINT SYSTEM BY SHEVIN WILLIAMS: PRIME COAT - ZINC CLAD III HS ZR EPOXY, INTERMEDIATE COAT - MACROPOXY 646 FAST CURE EPOXY, TOP COAT - SHEVIN WILLIAMS ACROLOY 2188 ACrylic POLYURETHANE. PRIME COAT TO BE 3 TO 5 MILS, INTERMEDIATE COAT TO BE 4 TO 10 MILS, AND TOP COAT TO BE 3 TO 6 MILS. DRY FILM THICKNESS. TOP COAT COLOR TO BE SILVER, AS AVAILABLE FOR THIS SYSTEM. COLOR ORDER #5449-002330.
 - 3) ALL BOLTS TO BE ASTM A307, GRADE A OR ASHTO N-164. ALL BOLTS 3/4" DIA IN 13/16" DIA HOLES UNLESS NOTED OTHERWISE. ALL BOLTS, NUTS, AND WASHERS TO BE GALVANIZED ACCORDING TO ASTM A153/ASHTO #232.
 - 4) GRIND ALL EDGES OF HSS RAILS TO A 1/8 INCH RADIUS. ALL OTHER EDGES AND CORNERS TO BE TO A 1/16 INCH RADIUS PRIOR TO PAINTING.

ACROLOY

Item	Location	Quantity
HSS Joints		34
3/4"x8" long WT posts		408
3/4"x8" long wood posts		4
3/4"x10" long wood posts		4
6/8"x9" long WT post base plates		360
3/4"x8" long L post base plates		64

All items listed above are galvanized dome-headed through bolts, supplied with nuts and washers ASTM A307 or A325 unless noted otherwise.

Pedestrian Bridge Railing for Swanton STP ST MHTB(1)						
Item	Location	wt./ft. lb./ft.	thickness in.	width in.	length ft.	wt. Ea. lb.
P-1						
WT5x16.5	post	16.5		4	5.375	73.39
PL	base PL	11.34	0.625	8	0	7.56
Total part wt. ea.: 80.95						
P-2, P-2A						
L3x3 1/2	post	13.6	0.5	4	5.375	60.49
PL	base PL	11.34	0.625	8	0	7.56
Total part wt. ea.: 68.05						
P-3, P-3A						
L3x3 1/2	post	13.6	0.5	4	5.375	60.49
PL	base PL	11.34	0.625	8	0	7.56
Total part wt. ea.: 68.05						

RECEIVED
OCT 03 2008
RESUBMIT APPROVED
BY DATE

Pedestrian Bridge Railing for Swanton STP ST MHTB(1)						
Item	Location	wt./ft. lb./ft.	thickness in.	width in.	length ft.	wt. Ea. lb.
L-12, R-17, R-12, L-17						
HSS3x2	top rail	7.11	0.25	20	3.375	144.20
HSS3x2	bot. rail	7.11	0.25	20	3.375	144.20
C4x5.4	rub rail	5.4	0.25	20	3.375	109.52
round 3/4"	spindle	0.48		3	11	5.27
Total part wt. ea.: 512.24						
L-13, R-16, R-13, L-16						
HSS3x2	top rail	7.11	0.25	20	6	145.76
HSS3x2	bot. rail	7.11	0.25	20	6	145.76
C4x5.4	rub rail	5.4	0.25	20	6	110.70
round 3/4"	spindle	0.48		3	11	5.27
Total part wt. ea.: 516.54						
L-14, R-15, R-14, L-15						
HSS3x2	top rail	7.11	0.25	20	6	145.76
HSS3x2	bot. rail	7.11	0.25	20	6	145.76
C4x5.4	rub rail	5.4	0.25	20	6	110.70
round 3/4"	spindle	0.48		3	11	5.27
Total part wt. ea.: 516.41						
L-27, R-27						
HSS3x2	top rail	7.11	0.25	7	10.0625	85.73
HSS3x2	bot. rail	7.11	0.25	6	2.8125	115.43
HSS3x2	end rail	7.11	0.25	2	3	16.00
HSS3x2	spindle	0.48		3	11	5.27
C4x5.4	rub rail	5.4	0.25	12	9.4375	69.05
round 3/4"	spindle	0.48		3	11	5.27
round 3/4"	spindle	0.48		3	10.3125	1.85
round 3/4"	spindle	0.48		3	9.375	1.81
round 3/4"	spindle	0.48		3	9.4375	1.77
round 3/4"	spindle	0.48		3	7.4375	1.73
round 3/4"	spindle	0.48		3	8.5	1.69
round 3/4"	spindle	0.48		3	5.5625	1.66
round 3/4"	spindle	0.48		3	4.625	1.62
round 3/4"	spindle	0.48		3	3.625	1.58
round 3/4"	spindle	0.48		3	2.6875	1.54
round 3/4"	spindle	0.48		3	1.75	1.51
round 3/4"	spindle	0.48		3	0.8125	1.47
round 3/4"	spindle	0.48		2	11.8125	1.43
round 3/4"	spindle	0.48		2	10.875	1.39
round 3/4"	spindle	0.48		2	9.9375	1.35
round 3/4"	spindle	0.48		2	9	1.32
round 3/4"	spindle	0.48		2	8	1.28
round 3/4"	spindle	0.48		2	7.0625	1.24
round 3/4"	spindle	0.48		2	6.125	1.20
round 3/4"	spindle	0.48		2	5.1875	1.16
round 3/4"	spindle	0.48		2	4.1875	1.12
round 3/4"	spindle	0.48		2	3.25	1.09
round 3/4"	spindle	0.48		2	2.3125	1.05
round 3/4"	spindle	0.48		2	1.375	1.01
round 3/4"	spindle	0.48		2	0.375	0.97
PL	rub rail end cap	0.66	0.25	2.3125	0	0.22
L3x3	post mount	9.4	0.5	0	6.1875	4.85
L3x3	post mount	9.4	0.5	0	4.5	4.31
Total part wt. ea.: 408.76						

UNLESS OTHERWISE SPECIFIED	DATE	NAME	LWI Metalworks MORRISVILLE, VT 05661 802-888-2394
DIMENSIONS ARE IN INCHES	DRAWN	SPT	
TOLERANCES: FRACTIONAL ± ANGULAR: MACH ± BEND ± TWO PLACE DECIMAL ± THREE PLACE DECIMAL ±	CHECKED	ADW	
INTERPRET GEOMETRIC TOLERANCING PER:	ENG APPR.		
MATERIAL M270-36, A500-B	MFG APPR.		TITLE: SWANTON STP ST MHTB(1)
FINISH SW PRIMER	Q.A.		SIZE DWG. NO. B R-1
	COMMENTS:		REV 10/1/08
	CCS Constructors LLC 138 Munson Avenue Morrisville, VT 05661 Ph: 802-888-7701 F: 802-888-4748		SCALE: A.N. WEIGHT: SCH. SHEET 1 OF 2