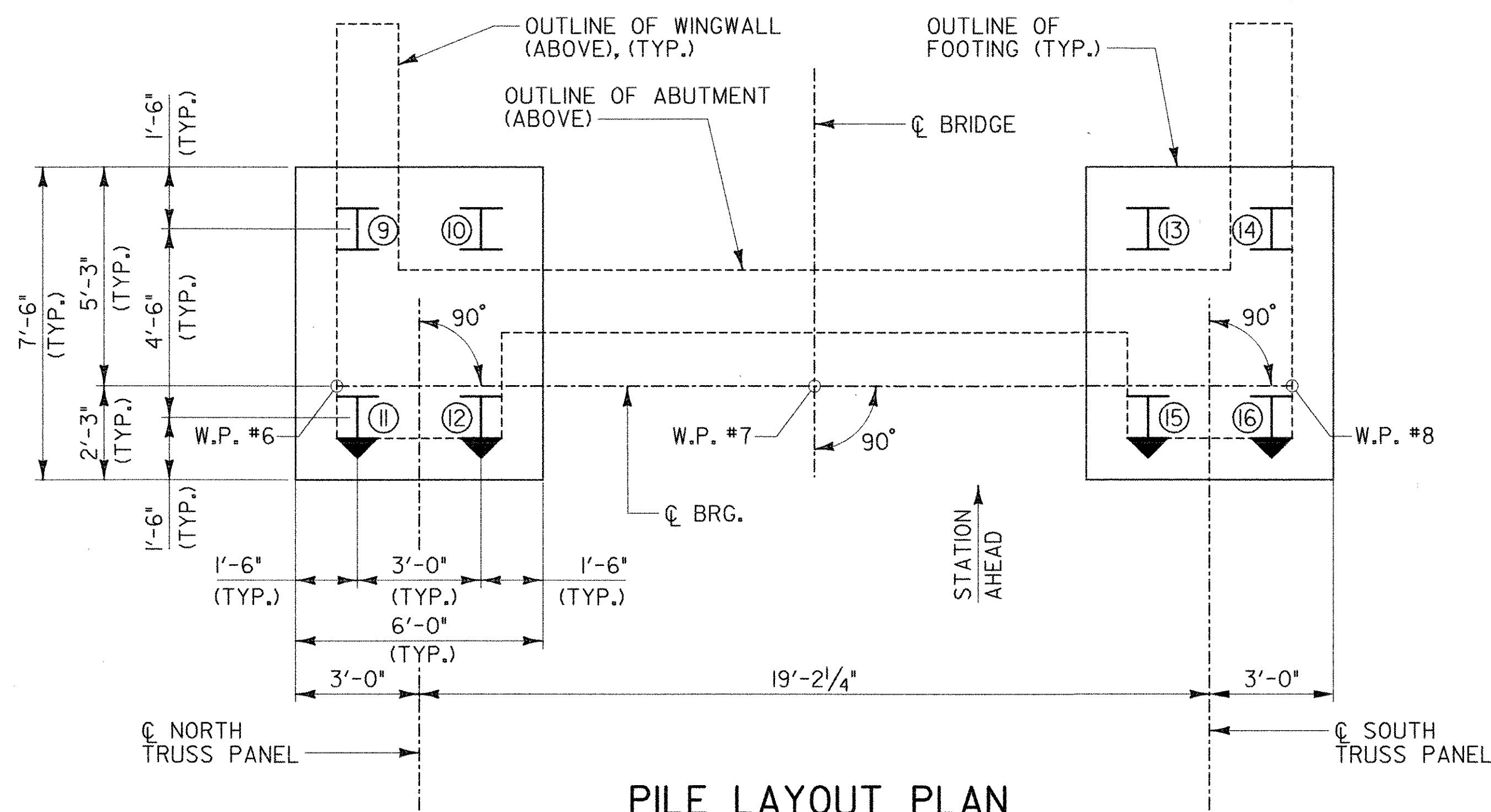





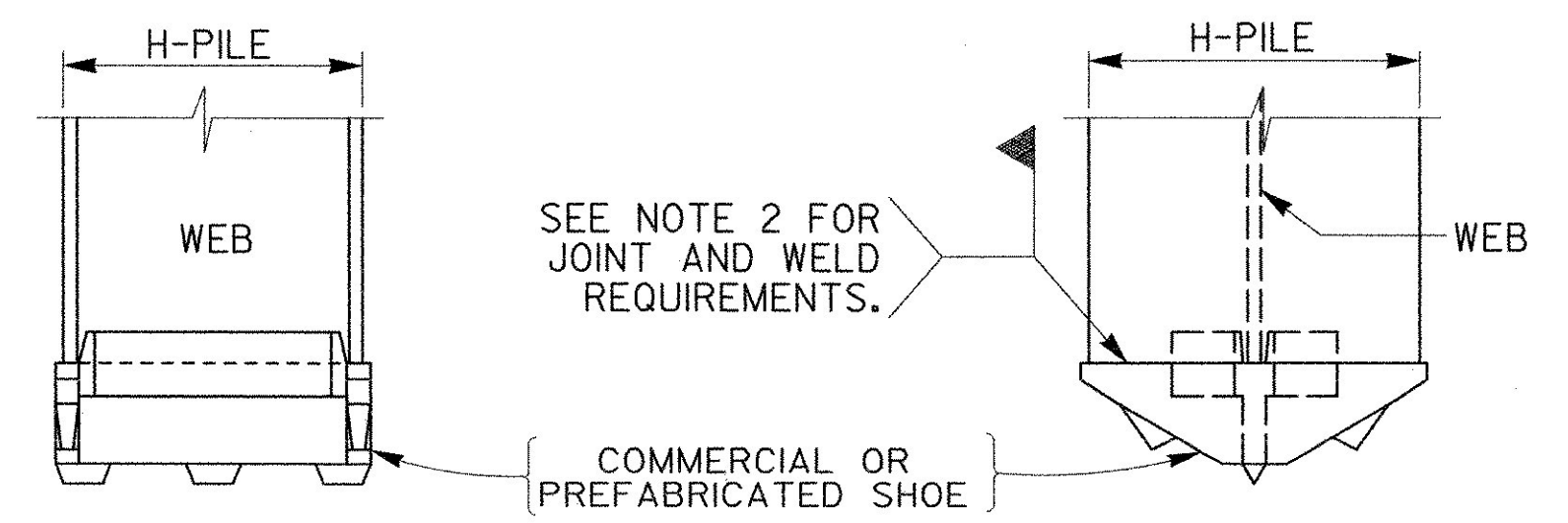
PILE LAYOUT PLAN
ABUTMENT 1
 SCALE 3/8" = 1'-0"



PILE LAYOUT PLAN
ABUTMENT 2
 SCALE 3/8" = 1'-0"

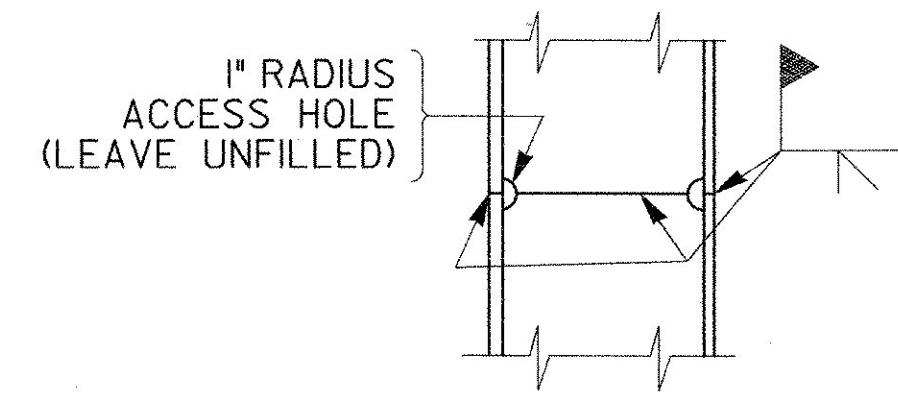
PILE LEGEND

-  HP 10 x 42 VERTICAL PILE
-  HP 10 x 42 BATTERED PILE (1 ON 6 BATTER)
-  PILE NUMBER



- NOTES:
1. COMMERCIAL OR PREFABRICATED SHOES SHALL BE APPROVED BY THE ENGINEER.
 2. THE SHOE WELD JOINT DESIGN SHALL BE DONE IN ACCORDANCE WITH THE MANUFACTURER'S RECOMMENDATION, AND SECTION 506 OF THE STANDARD SPECIFICATIONS.

STEEL PILE SHOES
 NOT TO SCALE



SPLICE FOR STEEL PILE
 NOT TO SCALE

- NOTES:
1. ALL PILES SHALL BE HP 10 x 42 CONFORMING TO THE REQUIREMENTS SECTION 505.
 2. ALL PILES SHALL BE DRIVEN TO REFUSAL OR BEDROCK. PILE REFUSAL CRITERIA = 15 BLOWS PER INCH, SUBJECT TO DYNAMIC MONITORING RESULTS.
 3. MAXIMUM DESIGN PILE LOAD = 30 KIPS (GROUP I). ULTIMATE PILE CAPACITY = 135 KIPS (INCLUDES 2.25 F.S.).
 4. ESTIMATED PILE LENGTH:
 ABUTMENT NO. 1 = 40 FEET PER PILE
 ABUTMENT NO. 2 = 40 FEET PER PILE
 5. PRIOR TO DRIVING PILES, THE CONTRACTOR SHALL SUBMIT PILE DRIVING EQUIPMENT, METHOD AND SEQUENCE FOR APPROVAL.
 6. FOR WORKING POINT COORDINATES, SEE SHEET 21.
 7. A DYNAMIC PILE LOADING TEST WILL BE PERFORMED ON PILES 1 & 9.

STATE OF VERMONT
AGENCY OF TRANSPORTATION

Town Of	SWANTON	Bridge No.	18
Highway No.		Log Sta.	
		Surv. Sta.	
RAIL TRAIL OVER MISSISQUOI RIVER			
PILE LAYOUT PLAN AND DETAILS			
Designed By	R. SACCHI	Drawn By	R. ROSS/A. ZAWILINSKI
Checked By	H. BUI	Date	1/23/08
		Bridge Design Supervisor	R. SACCHI
		Date	1/23/08
PROJECT	SWANTON	PROJECT NO.	STP ST MHTB(I)
I.G.C. Info.	ZD024FL.dgn		2/13/2008
Bridge Sheet No.	BR3	Sheet	47 of 63