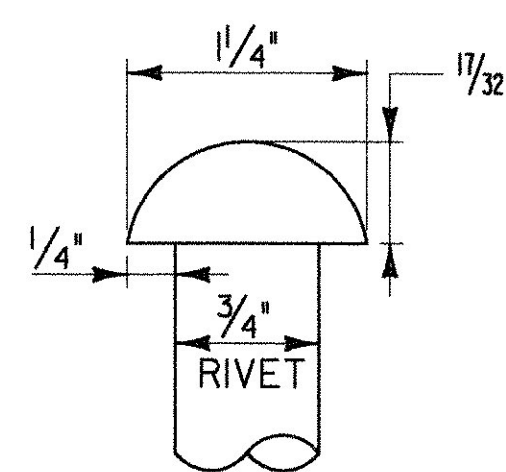
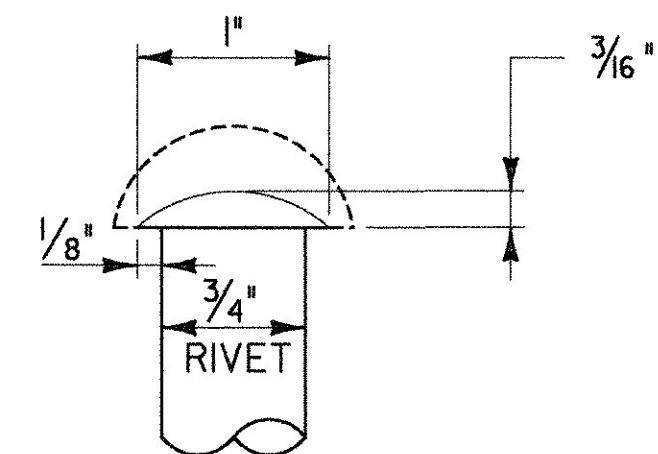


ORNAMENTAL RAILING

SCALE 3/4" = 1'-0"

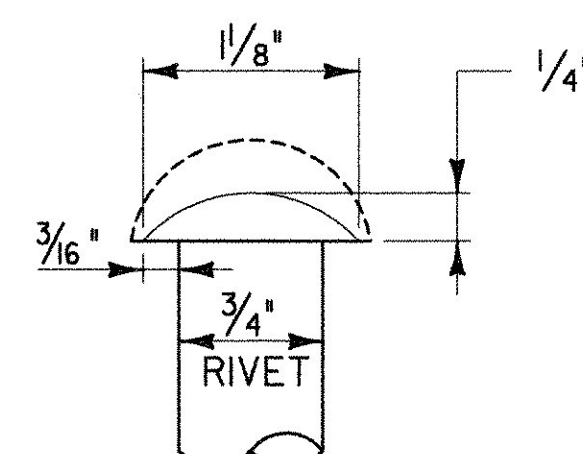


NEW CONDITION



MINIMUM ACCEPTABLE CONDITION FOR ANY RIVET

PROVIDED THERE IS NO ADDITIONAL DAMAGE AS DESCRIBED IN NOTE 1 OR NOTE 2



MINIMUM ACCEPTABLE CONDITION 20% OF CONNECTION RIVETS

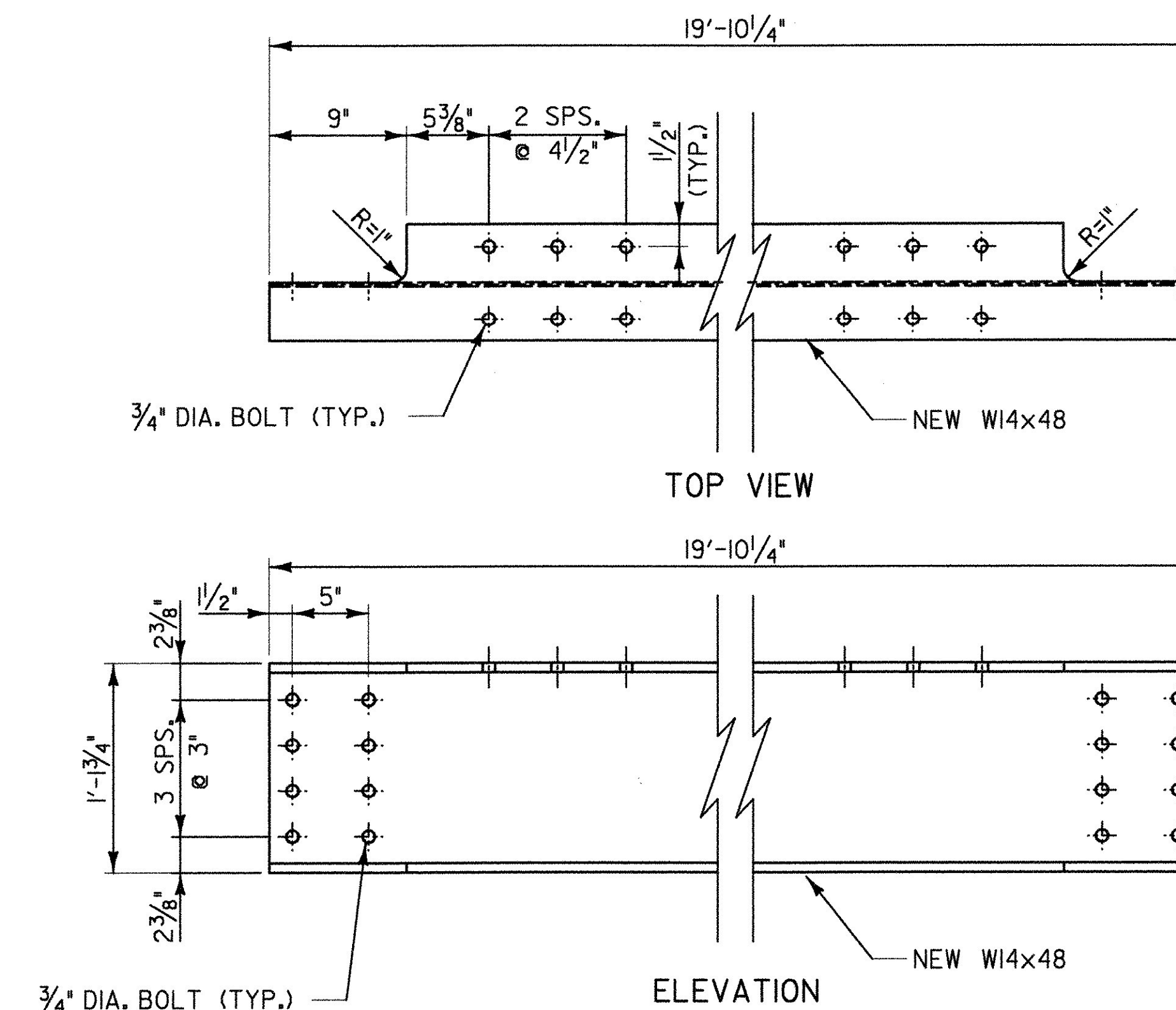
PROVIDED THERE IS NO PRYING ACTION TO SEPARATE CONNECTED PARTS EITHER FROM APPLIED STRESS OR CREVICE CORROSION. IF THIS PERCENTAGE IS EXCEEDED, THE RIVETS OVER THE PRESCRIBED PERCENTAGE SHALL BE REPLACED WITH HIGH STRENGTH BOLTS.

NOTES:

- ADDITIONAL LOSS IN THE FORM OF PITTS OR GOUGES IN THIS AREA THAT REDUCES THE SECTION BELOW THE LIMITS SHOWN SHALL BE CAUSE FOR REMOVAL OF THE RIVETS.
- IF CREVICE CORROSION IS PRESENT AT ANY LOCATION THE RIVETS ADJACENT TO THAT AREA SHALL BE REMOVED AND REPLACED WITH H.S. BOLTS AFTER CLEANING BETWEEN THE PARTS.
- WHEN SELECTING RIVETS FOR REPLACEMENT TO MEET THE CONDITIONS DESCRIBED ABOVE, THE WORST RIVETS IN ANY GROUP OR CONNECTIONS SHALL BE SELECTED FOR REPLACEMENT.
- PAYMENT FOR RIVET REPLACEMENT WILL BE MADE UNDER CONTRACT ITEM 900.620 SPECIAL PROVISION (THROUGH TRUSS RIVET REPLACEMENT).

EXISTING RIVET REPLACEMENT CRITERIA

NOT TO SCALE



FLOOR BEAM (W14x48)

SCALE 1 1/2" = 1'-0"

NOTES:

- THE DIMENSIONS SHOWN ARE FOR REFERENCE ONLY AND ARE BASED ON LIMITED FIELD MEASUREMENTS. THE CONTRACTOR SHALL FIELD VERIFY THE LENGTHS OF FLOOR BEAMS PRIOR TO FABRICATION.
- THE CONTRACTOR SHALL BE RESPONSIBLE FOR PROPER FIT AND ASSEMBLY OF ALL WORK.
- ALL FLOOR BEAMS ARE TO BE REPLACED.
- FOR STRUCTURAL STEEL AND HARDWARE REQUIREMENTS, SEE SHEET 20.
- RAILING SHALL BE REVIEWED IN THE FIELD. ANY PIECES DEEMED SALVAGABLE BY THE ENGINEER SHALL BE INCORPORATED INTO THE RE-ASSEMBLED TRUSSES. THE COST OF SALVAGING THE RAILING SHALL BE PAID FOR UNDER ITEM 900.645 SPECIAL PROVISION (INCORPORATING SALVAGED BRIDGE COMPONENTS.)

STATE OF VERMONT AGENCY OF TRANSPORTATION

Town Of	SWANTON	Bridge No.	18
Highway No.		Log Sta.
		Surv. Sta.
RAIL TRAIL OVER MISSISQUOI RIVER			
MISCELLANEOUS STEEL REPAIR DETAILS			
Designed By	R. SACCHI	Drawn By	R. ROSS
Checked By	H. BUI	Date	1/23/08
		Bridge Design Supervisor	R. SACCHI
		Date	1/23/08
PROJECT	SWANTON	PROJECT NO.	STP ST MHTB(I)
LG.C. Info.	ZD024MD2.dgn		1/30/2008
Bridge Sheet No.	BR3	Sheet	43 of 63