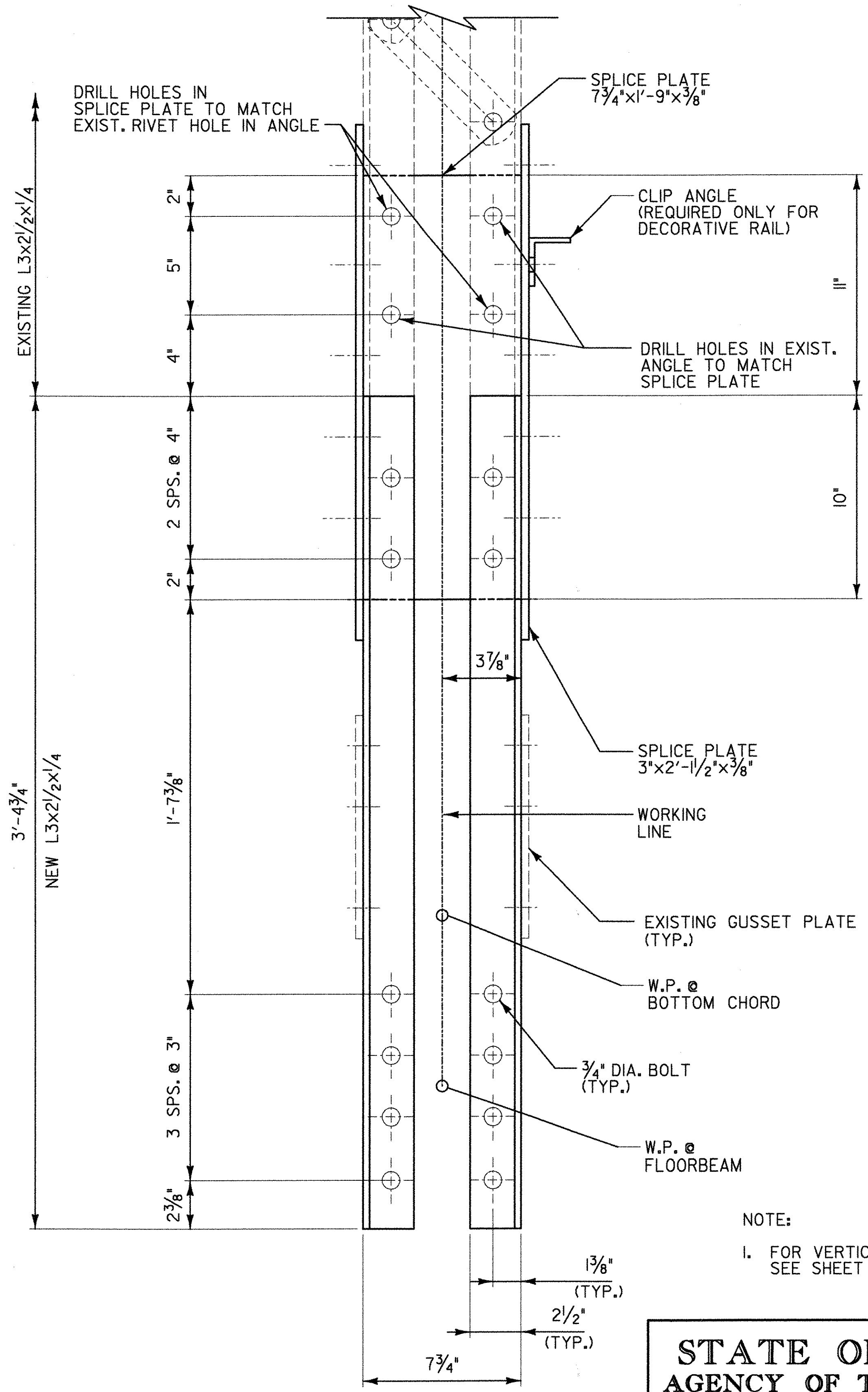
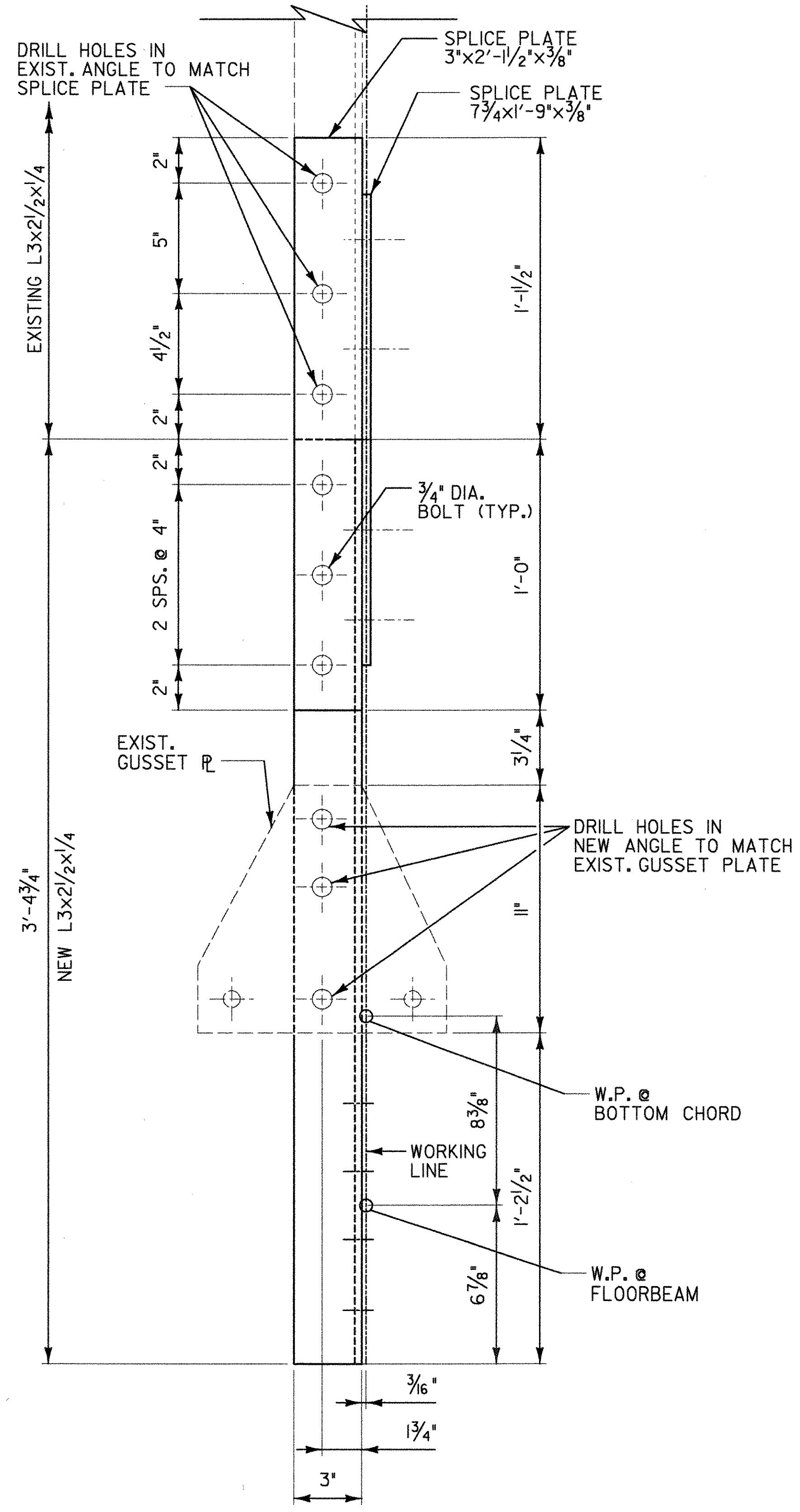
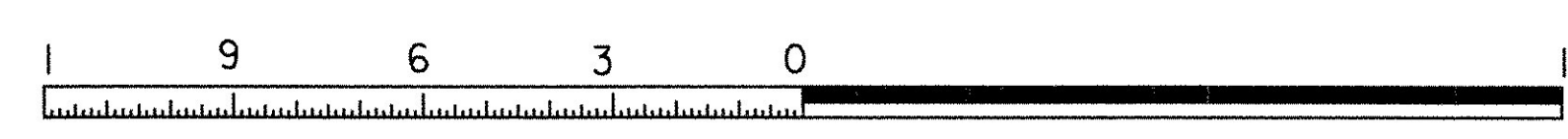


EXISTING CONDITION

VERTICAL MEMBER REPAIR DETAILS

SBI-1, SBI-24, SB2-1, SB2-24
 NBI-1, NBI-24, NB2-1, NB2-24

SCALE 3" = 1'-0"



NOTE:
 1. FOR VERTICAL MEMBER REPAIR NOTES, SEE SHEET 33.

STATE OF VERMONT AGENCY OF TRANSPORTATION	
Town Of SWANTON	Bridge No. 18
Highway No.	Log Sta. _____
	Surv. Sta. _____
RAIL TRAIL OVER MISSISQUOI RIVER	
VERTICAL MEMBER REPAIR DETAILS 3	
Designed By R. SACCHI	Drawn By R. ROSS
Checked By H. BUI	Bridge Design Supervisor
Date 1/23/08	Date 1/23/08
PROJECT SWANTON	PROJECT NO. STP ST MHTB(I)
I.G.C. Info. ZD024VR3.dgn	1/30/2008
Bridge Sheet No. BR3	Sheet 35 of 63