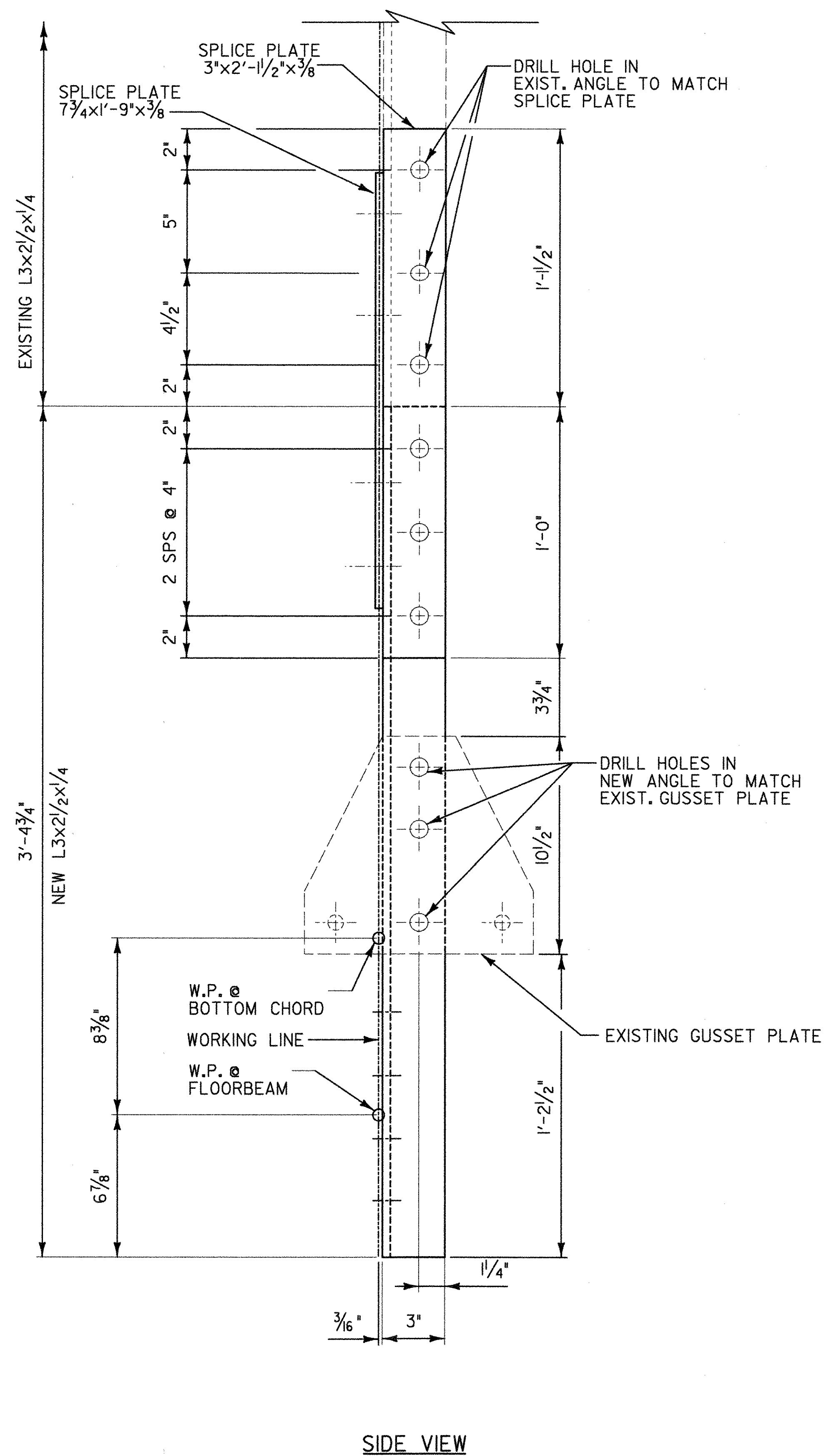
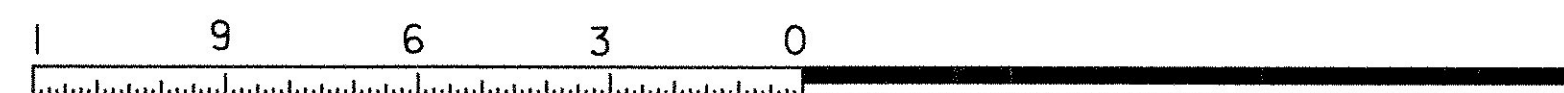
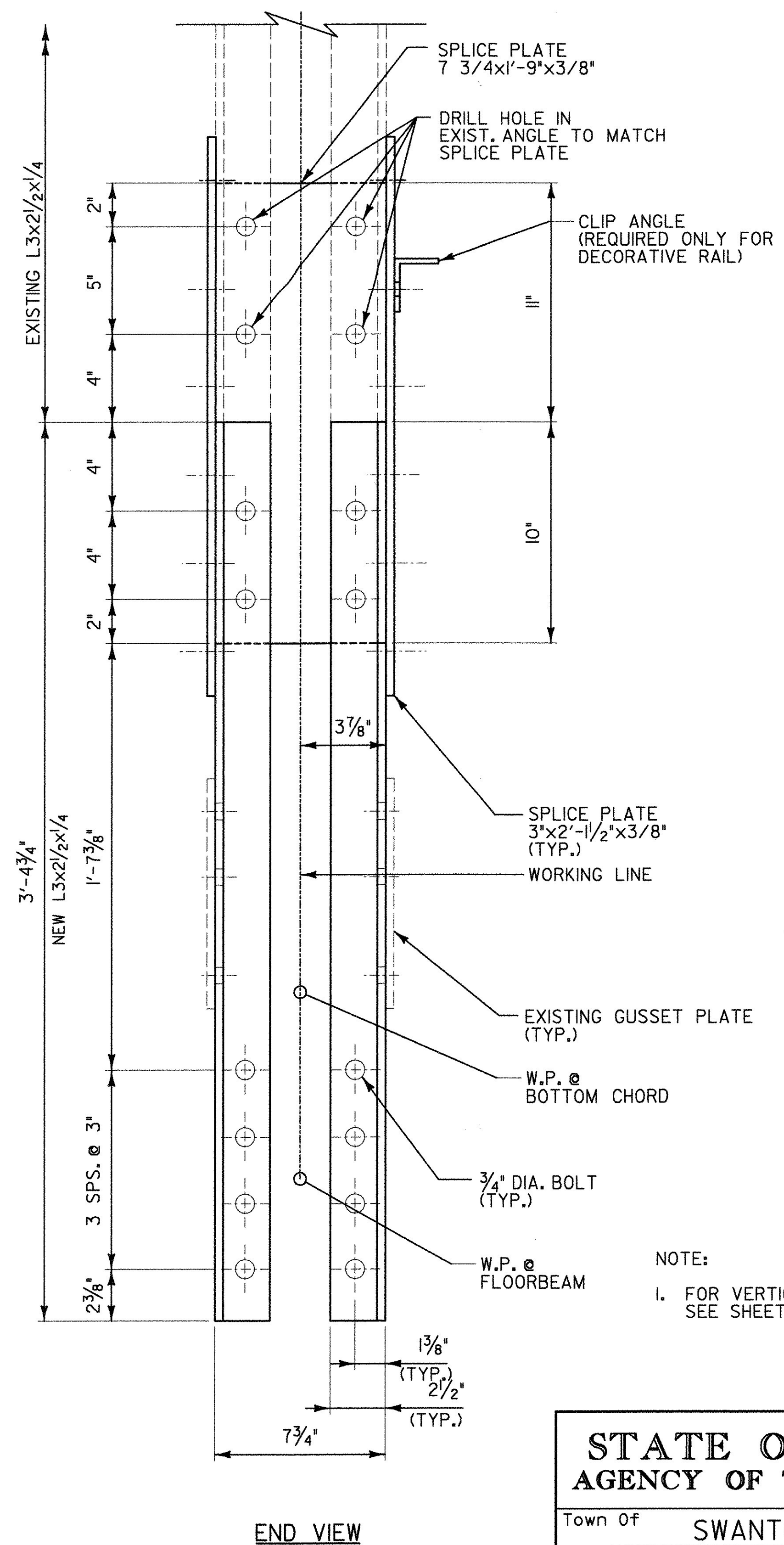


**VERTICAL MEMBER REPAIR DETAILS**  
 SBI-IIA, SB2-IIA  
 NBI-IIA, NB2-IIA

SCALE 3" = 1'-0"



**REPAIR DETAIL**



NOTE:  
 1. FOR VERTICAL MEMBER REPAIR NOTES, SEE SHEET 33.

**STATE OF VERMONT**  
**AGENCY OF TRANSPORTATION**

Town Of	SWANTON	Bridge No.	18
Highway No.		Log Sta.	-----
		Surv. Sta.	-----
RAIL TRAIL OVER MISSISQUOI RIVER			
<b>VERTICAL MEMBER REPAIR DETAILS 2</b>			
Designed By	R. SACCHI	Drawn By	R. ROSS
Checked By	H. BUI	Date	1/23/08
		Bridge Design Supervisor	R. SACCHI
		Date	1/23/08
PROJECT	SWANTON	PROJECT NO.	STP ST MHTB(I)
I.G.C. Info.	ZD024VR2.dgn		1/30/2008
Bridge Sheet No.	BR3	Sheet	34 of 63