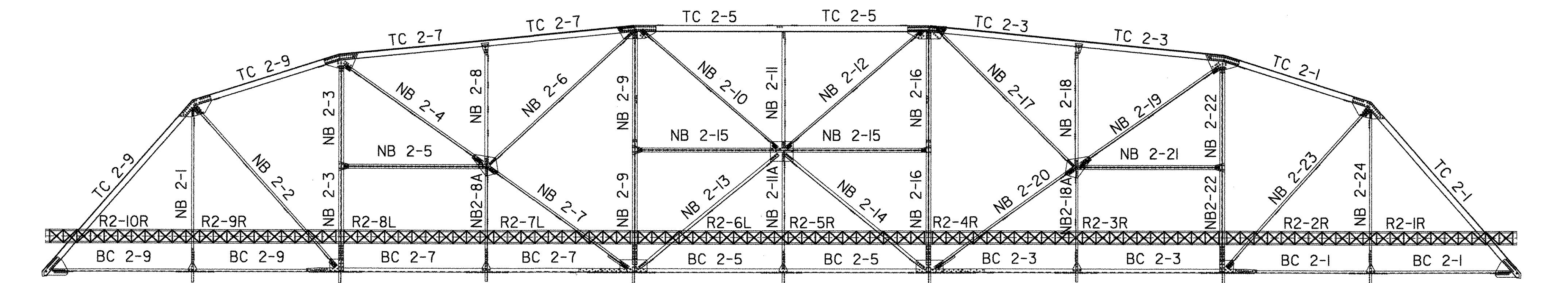


SPAN 3 - SOUTH TRUSS
(LOOKING FROM BRIDGE DECK)

ABUTMENT 2

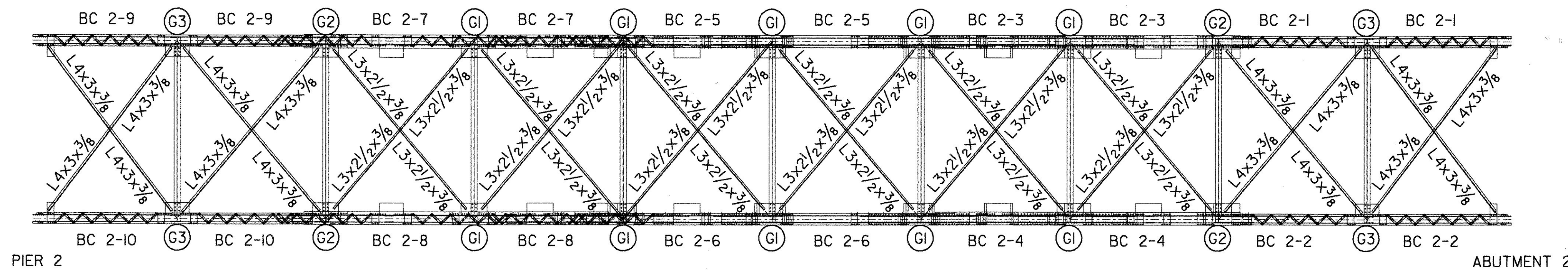
PIER 2



SPAN 3 - NORTH TRUSS
(LOOKING FROM BRIDGE DECK)

PIER 2

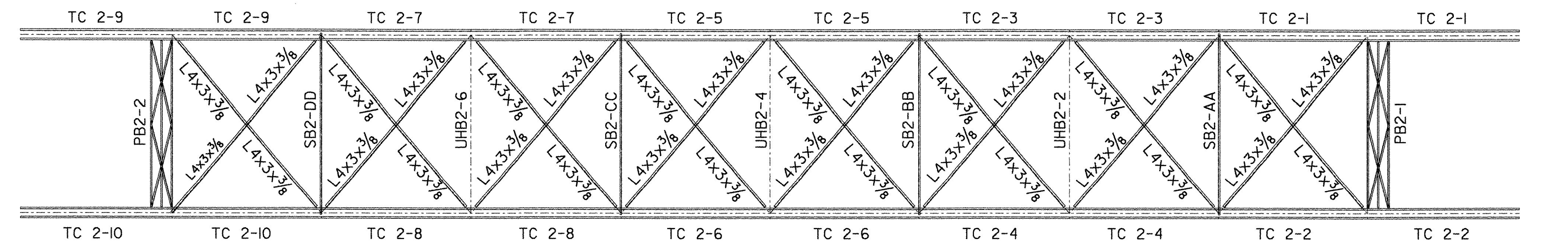
ABUTMENT 2



SPAN 3 - FLOOR PLAN

PIER 2

ABUTMENT 2



SPAN 3 - UPPER BRACING PLAN

PIER 2

ABUTMENT 2

NOTES:

1. MEMBER DESIGNATIONS WERE COMPILED FROM AVAILABLE FIELD INFORMATION.
2. THE CONTRACTOR'S ATTENTION IS DIRECTED TO THE FACT THAT THERE MAYBE MEMBER IDENTIFICATION TAGS THAT ARE MISSING FROM THE MEMBERS, AND MEMBERS THAT ARE MISLABELED WITH AN INCORRECT DESIGNATION OR A CONFLICTING DESIGNATION. IT SHALL BE UP TO THE CONTRACTOR TO RESOLVE THESE CONFLICTS.
3. (G3) = GUSSET PLATE NUMBER (SEE SHEET 44)

**STATE OF VERMONT
AGENCY OF TRANSPORTATION**

Town Of	SWANTON	Bridge No.	18
Highway No.		Log Sta.	
		Surv. Sta.	
RAIL TRAIL OVER MISSISQUOI RIVER			
EXISTING THROUGH TRUSS MEMBER DESIGNATIONS 2			
Designed By	R. SACCHI	Drawn By	R. ROSS
Checked By	H. BUI	Bridge Design Supervisor	R. SACCHI
Date	1/23/08	Date	1/23/08
PROJECT	SWANTON	PROJECT NO.	STP ST MHTB(I)
I.G.C. Info.	ZD024TMD2.dgn		1/30/2008
Bridge Sheet No.	BR3	Sheet	28 of 63