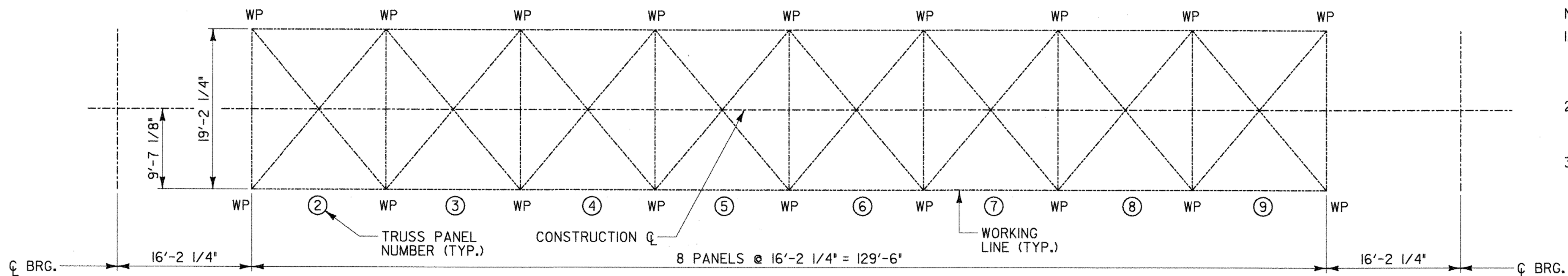


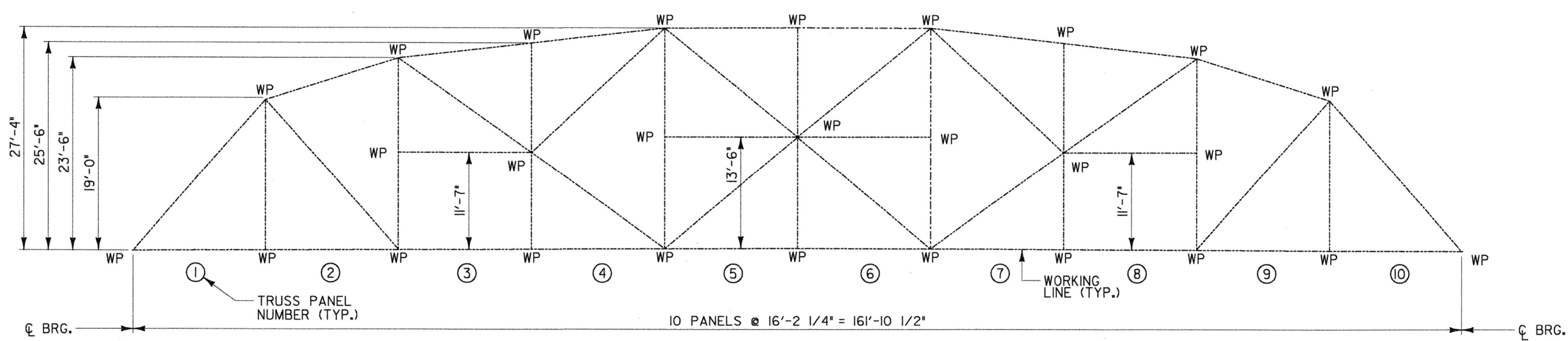
COORDINATE TABLE		
W.P. #	NORTHING	EASTING
1	881520.87	1477568.97
2	881510.30	1477564.21
3	881499.73	1477559.45
4	881443.38	1477712.98
5	881391.80	1477827.66
6	881314.31	1477971.66
7	881324.88	1477976.42
8	881335.45	1477981.17

WORKING POINT LAYOUT

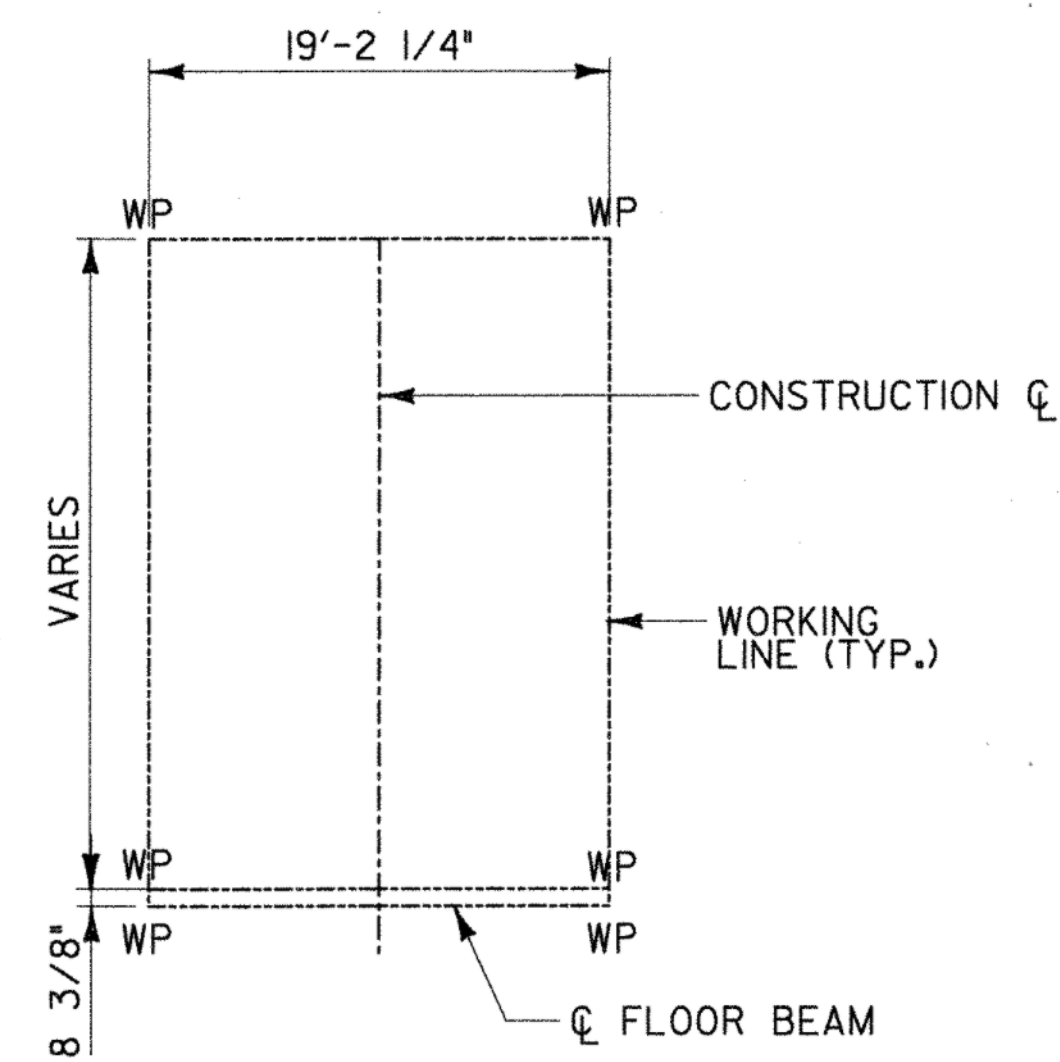


TOP PLAN

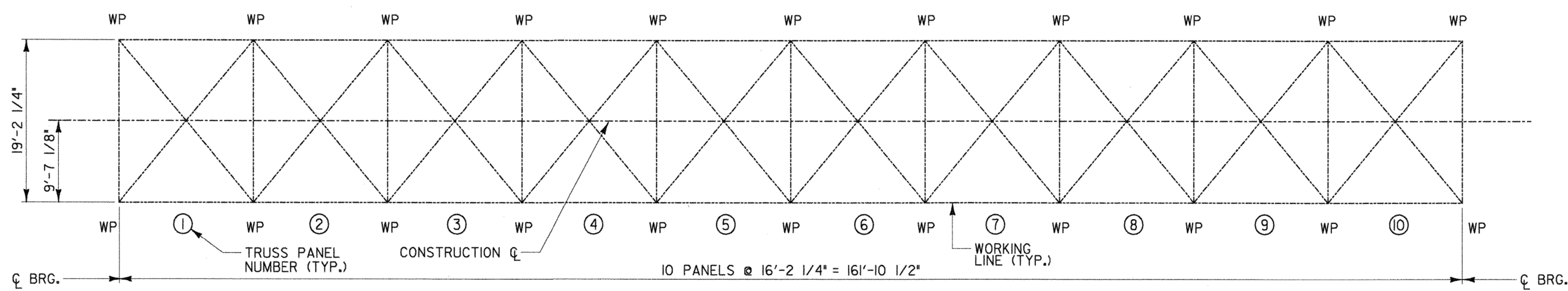
- NOTES:
1. THE DIMENSIONS SHOWN ON THIS DRAWING ARE FOR REFERENCE ONLY AND WERE USED TO CALCULATE THE OVERALL GEOMETRY AND LAYOUT OF THE TRUSSES. THESE DIMENSIONS ARE NOT GUARANTEED.
 2. THE CONTRACTOR SHALL TAKE ALL FIELD MEASUREMENTS NECESSARY TO VERIFY DIMENSIONS AND ASSURE THE PROPER FIT OF THE FINISHED WORK.
 3. LOCATION OF \bar{C} BEARING AND ANCHOR BOLTS FOR THE REHABILITATED PENNSYLVANIA THROUGH TRUSSES ARE SUBJECT TO FINAL ASSEMBLY OF THE TRUSSES AND THE ACTUAL ASSEMBLED LENGTH.



SIDE ELEVATION



END ELEVATION



BOTTOM PLAN

**STATE OF VERMONT
AGENCY OF TRANSPORTATION**

Town Of	SWANTON	Bridge No.	18
Highway No.		Log Sta.	
		Surv. Sta.	
RAIL TRAIL OVER MISSISQUOI RIVER			
EXISTING THROUGH TRUSS LAYOUT			
Designed By		Drawn By	
Checked By	Date	Bridge Design Supervisor	
H. BUI	1/23/08	R. SACCHI	Date 1/23/08
PROJECT	SWANTON	PROJECT NO.	STP ST MHTB(I)
I.G.C. Info.	ZD024TL1.dgn		1/30/2008
Bridge Sheet No.	BR3	Sheet	21 of 63