

GEODETIC CONTROL POINTS

PG 2593 DESIGNATION F (NOT SHOWN)

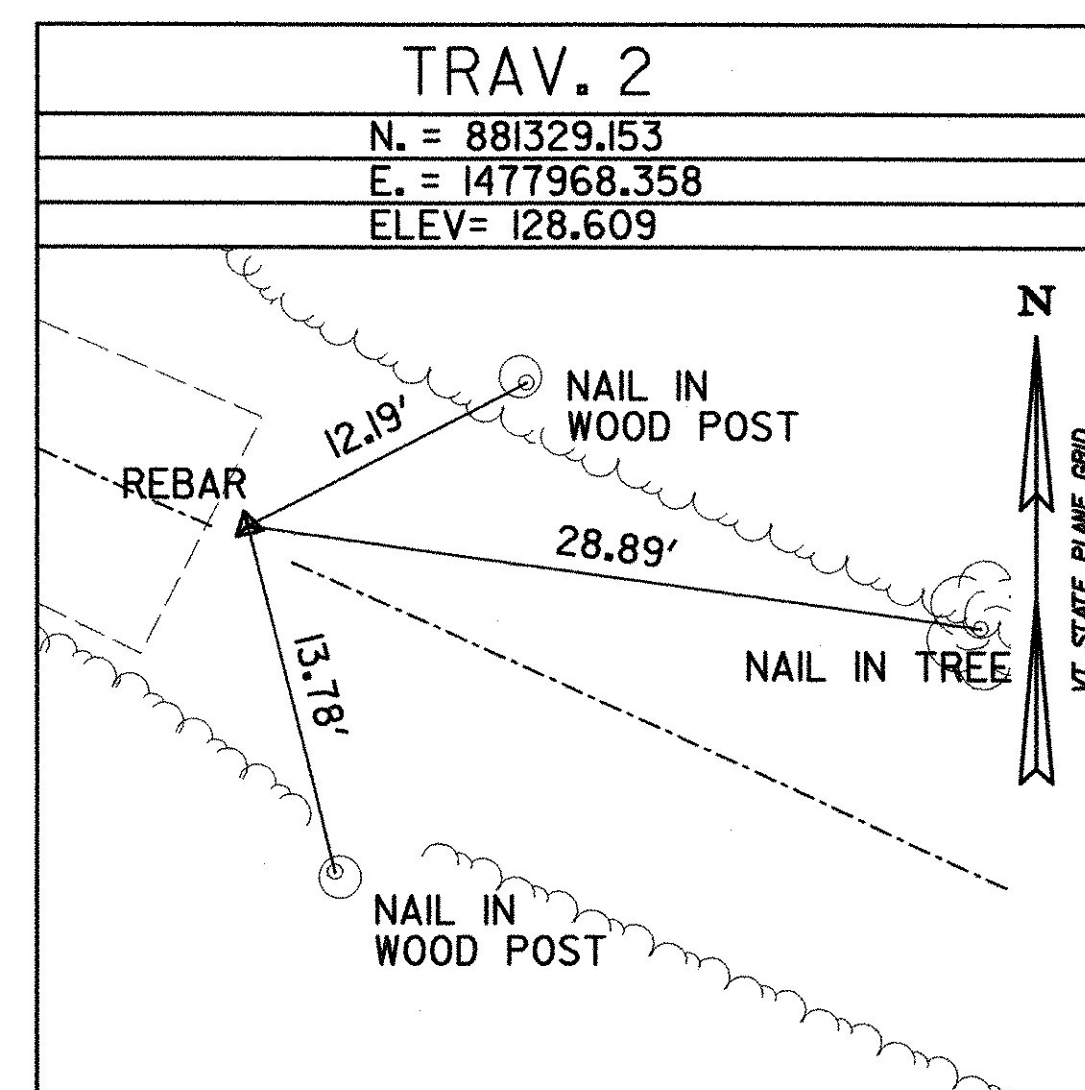
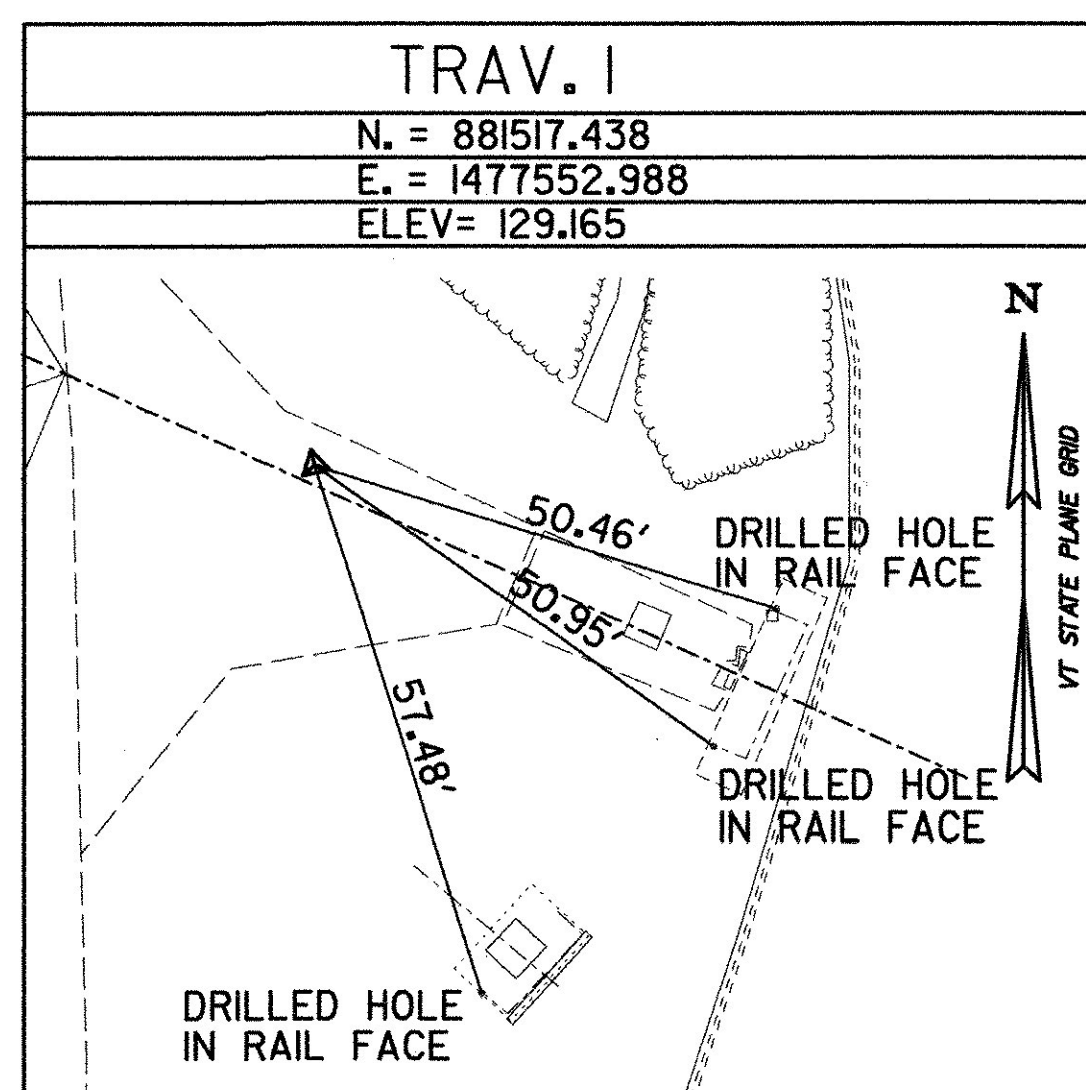
N = 888641.184  
E = 1486201.342  
Z = 223.0

GENERAL LOCATION IS ABOUT 5.0 MILES SOUTH OF THE U.S. AND CANADIAN BORDER, 1.8 MILES EAST OF SWANTON AT THE FRANKLIN COUNTY AIRPORT AND NEAR THE END OF RUNWAY 1.

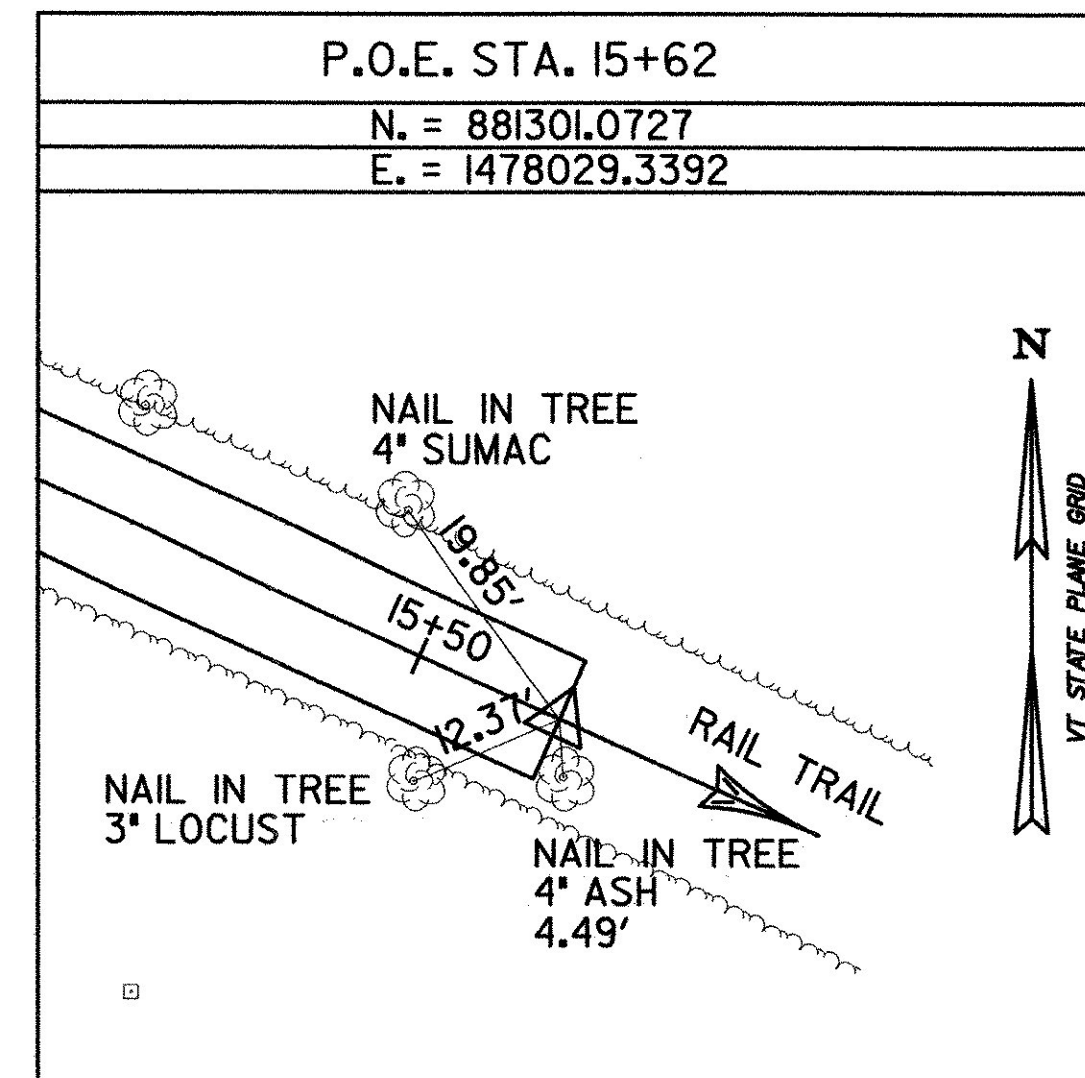
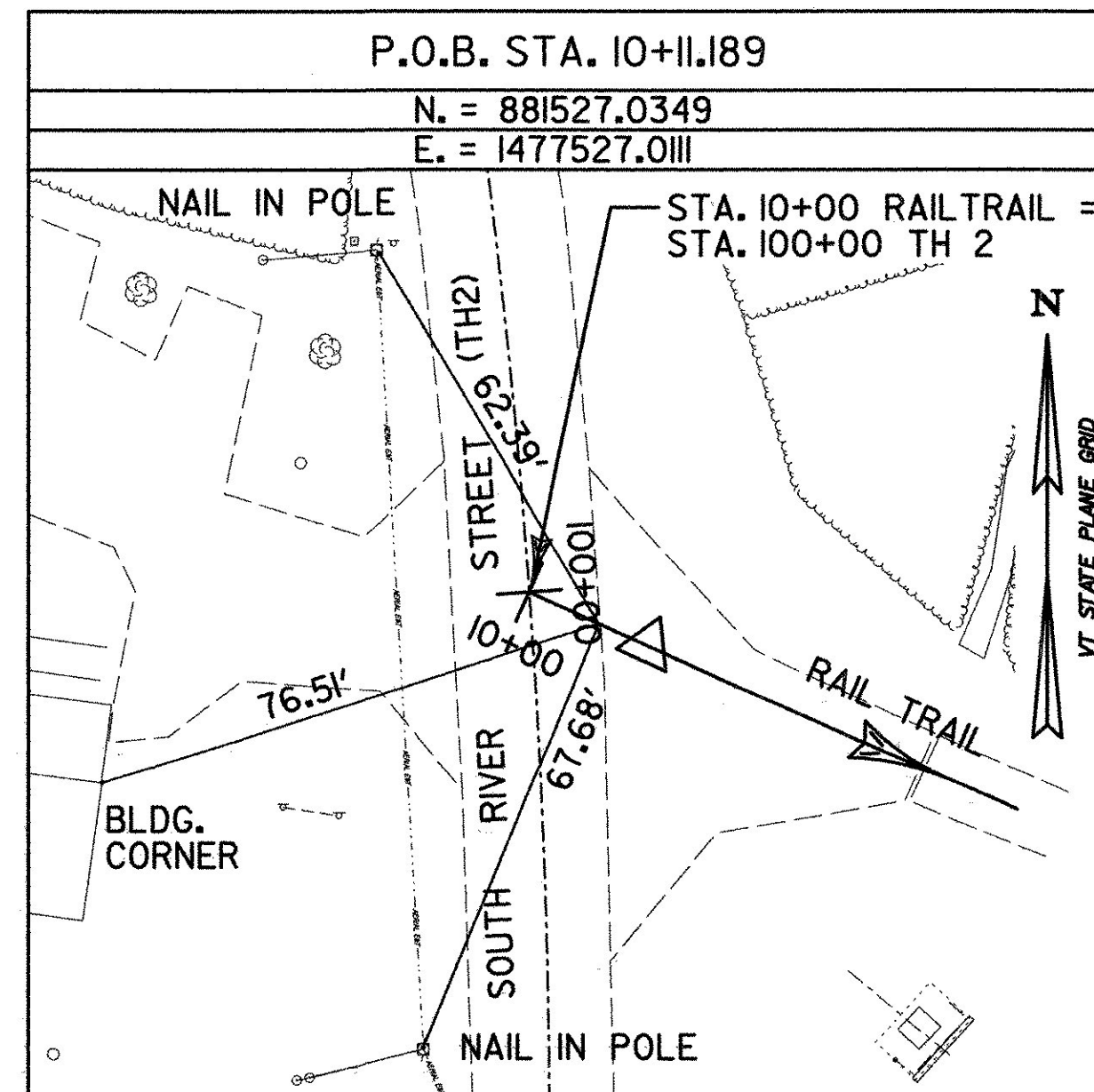
TO REACH THE STATION FROM THE POST OFFICE IN SWANTON, GO EAST ON STATE HIGHWAY 78 FOR 1.85 MILES TO A PAVED ROAD LEFT, TURN LEFT ON AIRPORT ACCESS ROAD NORTH FOR 0.6 MILES TO AIRPORT TERMINAL BUILDING AND A GATE AHEAD. CONTINUE AHEAD, PASSING THROUGH GATE AND GO NORTH FOR 0.05 MILES TO A GRAVELED ROAD BETWEEN 4 SMALL HANGARS. TURN LEFT AND GO WEST FOR 200 FT TO THE TARMAC AND RAMP AHEAD. CONTINUE AHEAD ONTO TARMAC AND RAMP FOR 0.1 MILES TO THE RUNWAY. TURN LEFT AND GO SOUTH ON THE RUNWAY FOR 0.2 MILES TO THE END OF THE RUNWAY AND THE STATION ON THE LEFT.

THE STATION IS A STANDARD VTDH DISK STAMPED F11984, SET INTO CONCRETE IN A CAST ALUMINUM PIPE WHICH IS 15 CM IN DIAMETER AND FLUSH WITH THE GROUND 1.0 FT EAST OF A FIBERGLASS WITNESS POST.

TRAVERSE TIES



ALIGNMENT TIES



DATUM	
VERTICAL	NGVD 1929
HORIZONTAL	NAD 83

**URS**  
URS CORPORATION  
28 CORPORATE DRIVE, SUITE 200  
CLIFTON PARK, NY 12065  
PH# (518) 688-0015

SHEET NAME: TIES	
PROJECT NAME: SWANTON	
PROJECT NUMBER: STP ST MHTB(1)	
FILE NAME: zd0241tel.dgn	PLOT DATE: 2/13/2008
PROJECT LEADER: M. K. CHEVALIER	DRAWN BY: R. ROSS
DESIGNED BY: B. ERNST	CHECKED BY: M. K. CHEVALIER
	SHEET 4 OF 63

P:\Structural\Sheet\Final\Plans\zd0241tel.dgn