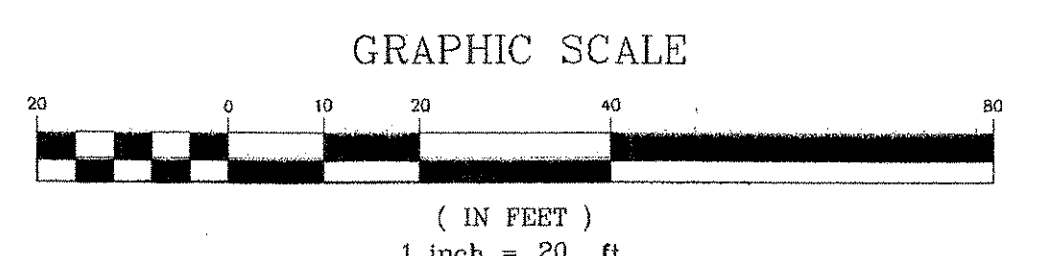
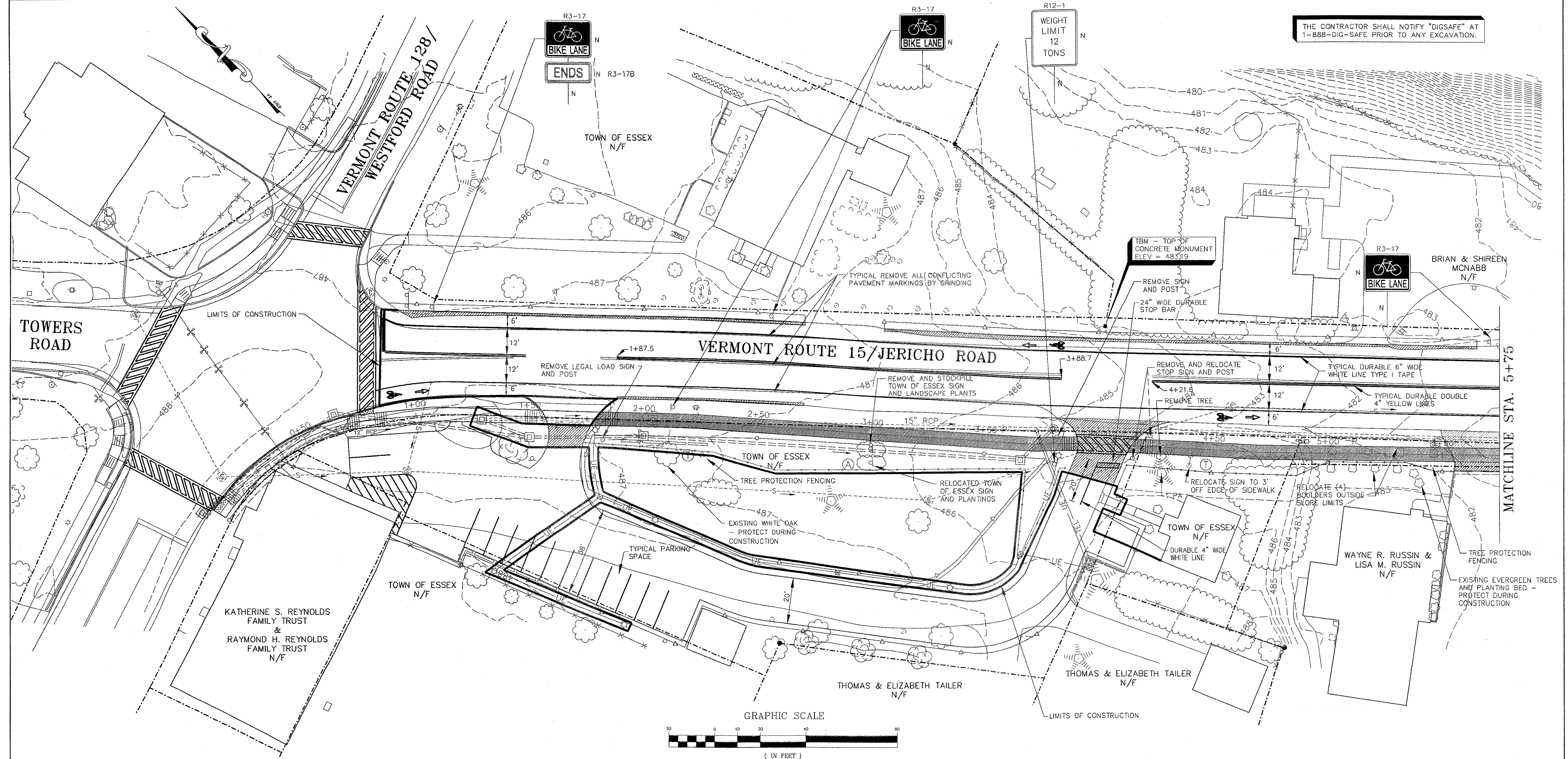


THE CONTRACTOR SHALL NOTIFY "DIGSAFE" AT 1-888-DIG-SAFE PRIOR TO ANY EXCAVATION.

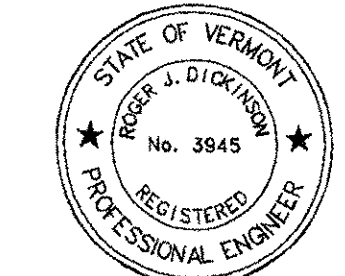
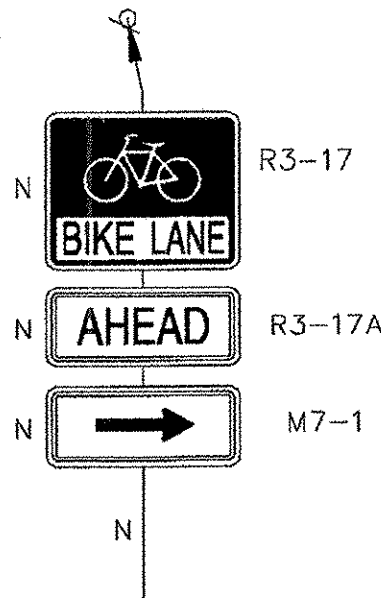


**LEGEND**

- CONCRETE MONUMENT FOUND
- IRON PIN FOUND
- ⊕ EXISTING LIGHT POLE
- ⊕ EXISTING HYDRANT
- ⊕ EXISTING TELEPHONE MANHOLE
- ⊕ EXISTING SEWER MH W/SEWER PIPE
- ⊕ EXISTING MAILBOX
- ⊕ EXISTING CB W/STORMWATER PIPE
- ⊕ EXISTING SIGNS
- ⊕ EXISTING WOOD RAIL FENCE
- ⊕ EXISTING UTILITY POLE & GUY WIRE
- ⊕ EXISTING TREES
- ⊕ EXISTING TREE LINE
- ⊕ EXISTING CONTOUR
- ⊕ EXISTING WHITE LINE
- ⊕ EXISTING ROAD CENTERLINE
- ⊕ EXISTING FACE OF BUILDING
- ⊕ PROPOSED MAILBOX
- ⊕ PROPOSED DRAINAGE MANHOLE
- ⊕ PROPOSED CB W/STORMWATER PIPE
- ⊕ PROPOSED TREES
- ⊕ PROPOSED TREE LINE
- ⊕ PROPOSED WHITE LINE
- ⊕ PROPOSED ROAD CENTERLINE
- ⊕ PROPOSED PAVEMENT AND BASE
- ⊕ PROPOSED SIDEWALK
- ⊕ PROPERTY LINE
- ⊕ SLOPE LIMIT (FILL)
- ⊕ SLOPE LIMIT (CUT)
- ⊕ FINISH GRADE ELEVATION
- ⊕ NEW SIGN OR POST
- ⊕ SALVAGED SIGN OR POST
- ⊕ BIKE LANE SYMBOL PAVEMENT MARKINGS - DURABLE WHITE TYPE I TAPE
- ⊕ PROPOSED SILT FENCE

Key	Existing Plants	Quantity	Remarks
A	Town of Essex on Town Green: 3 Daylily clumps, 3 Sedum 'Autumn Joy', 2 Creeping Phlox, 2 Geranium Sanguinum, 1 Shasta Daisy, 4 Violets	15 plants	Stockpile sign and plants with bark mulch and water regularly until ready for final planting
B	All About Hair Sign at entrance to Russin Property: 7 Bearded Iris clumps, 1 Daylily, 1 Creeping Phlox, 2 Euonymus Alatus 'Compactus'	12 plants	Stockpile sign and plants with bark mulch and water regularly until ready for final planting
C	Existing 6" Diameter White Spruce	1 plant	White Spruce tree to be dug and stockpiled with bark mulch and watered until ready for final planting
D	4 Large clumps of Hybrid Daylilies (approximately 30 plants), 2 Siberian Iris	32 plants	Stockpile sign and plants with bark mulch and water regularly until ready for final planting
E	Existing clump of Hybrid Daylilies (approximately 15 plants), 1 Weeping Spruce (Picea abies forma pendula) specimen tree	16 plants	Stockpile sign and plants with bark mulch and water regularly until ready for final planting
F	Existing plantings by fence: 3 Potentilla fruticosa, 2 Spiraea bumalda 'Anthony Waterer'	5 plants	Stockpile sign and plants with bark mulch and water regularly until ready for final planting
G	Existing plantings by fence: 2 Potentilla fruticosa, 2 Spiraea bumalda 'Anthony Waterer'	4 plants	Stockpile sign and plants with bark mulch and water regularly until ready for final planting
T	Branches which face construction area to be protected by tying towards trunk of tree		Follow General Specifications for tree protection

Key	Botanical Name	Common Name	Quantity	Size	Remarks
<b>TREES</b>					
EP	Fraxinus Pennsylvanica 'Marshall's Seedless'	Marshall's Seedless Ash	4	2 1/2" - 3" CAL.	B & B, Specimens only
GT	Gleditsia Triacanthos 'Halka'	Halka Honeylocust	4	2 1/2" - 3" CAL.	B & B, Specimens only
PA	Picea Abies	Norway Spruce	1	6" - 8" HEIGHT	B & B, Specimens only
QR	Quercus Rubra	Northern Red Oak	3	2 1/2" - 3" CAL.	B & B, Specimens only
RP	Robinia Pseudacacia	Black Locust	2	2 1/2" - 3" CAL.	B & B, Specimens only



DATUM  
VERTICAL NAVD 1988  
HORIZONTAL NAD 1983

12-19-05	REVISED FOR BIDDERS	BH/DH
10-20-05	REVISED FOR CONTRACT PLANS	BH/DH
REVISIONS		
THESE PLANS WITH LATEST REVISIONS SHOULD ONLY BE USED FOR THE PURPOSE SHOWN BELOW:		
<b>STP WALK (9) TOWN OF ESSEX ROUTE 15 IN ESSEX CENTER, VT</b>		# OF SHEETS
		proj. no. 02-132
		survey & D/OTHERS
		design DLH/LAL
		drawn DB
		checked LAL/DLH
		date 03/01/04
		scale 1" = 20'
		sh. no. 20
		02132-101

**LAMOREUX & DICKINSON**  
Consulting Engineers, Inc.  
14 Morse Drive  
Essex Junction, VT 05452  
Tel: 802-878-4450